







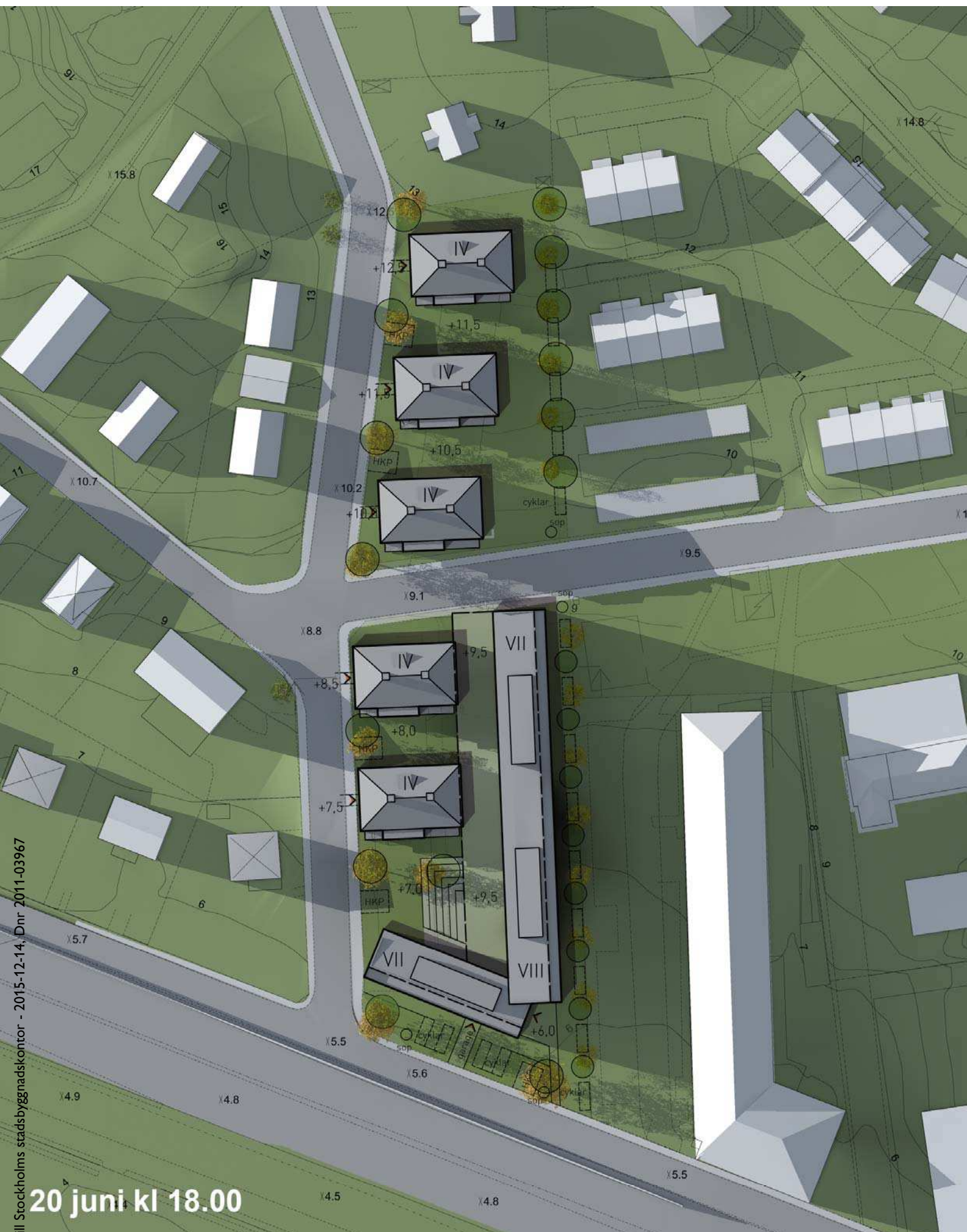
Inkom till Stockholms stadsbyggnadskontor - 2015-12-14, Dnr 2011-03967

20 juni kl 12.00









20 juni kl 18.00





Inkom till Stockholms stadsbyggnadskontor - 2015-12-14, Dnr 2011-03967

0 mars kl 9.00



Architectural site plan of a residential development in Stockholm. The plan shows several building footprints, some labeled with Roman numerals (IV, VII, VIII). It includes a road network, green spaces, and various annotations like 'HKP', 'cyklar', and 'sop'. Elevation points are marked throughout the site. A large, light blue building footprint is prominent on the right side. The plan is overlaid with a grid of numbers and letters.

20 mars kl 12.00

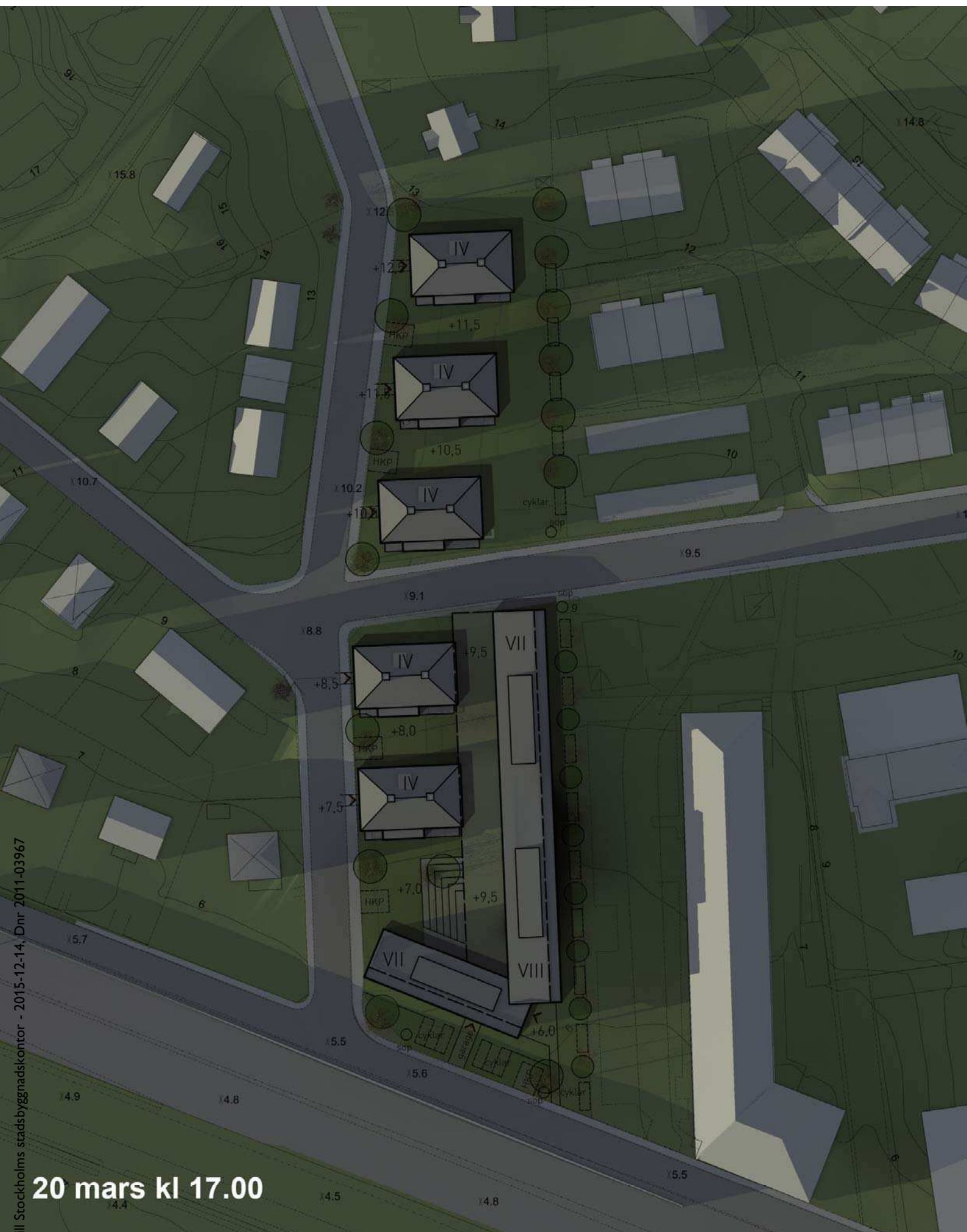
Inkom till Stockholms stadsbyggnadskontor - 2015-12-14, Dnr 2011-03967





20 mars kl 15.00





20 mars kl 17.00