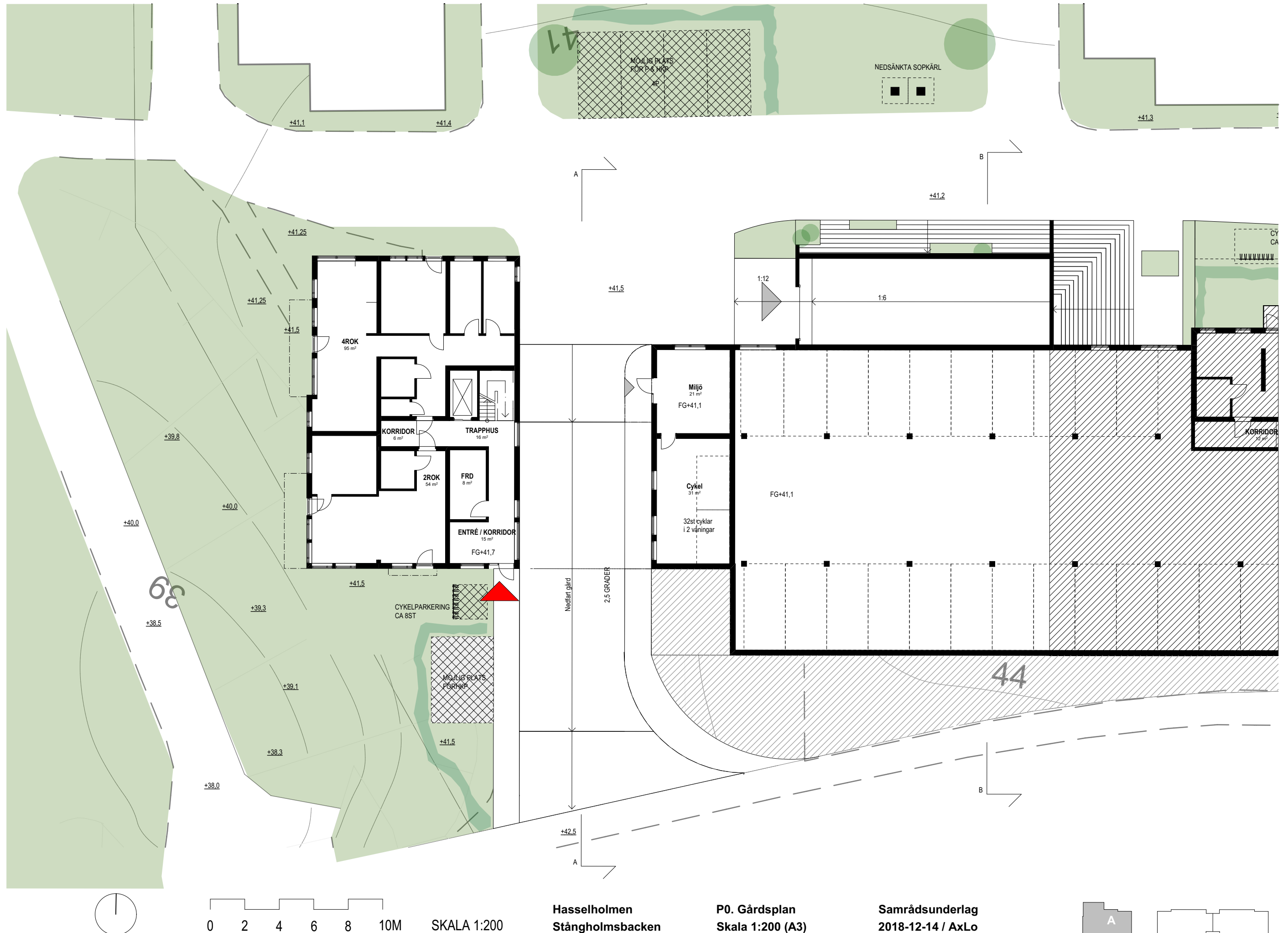


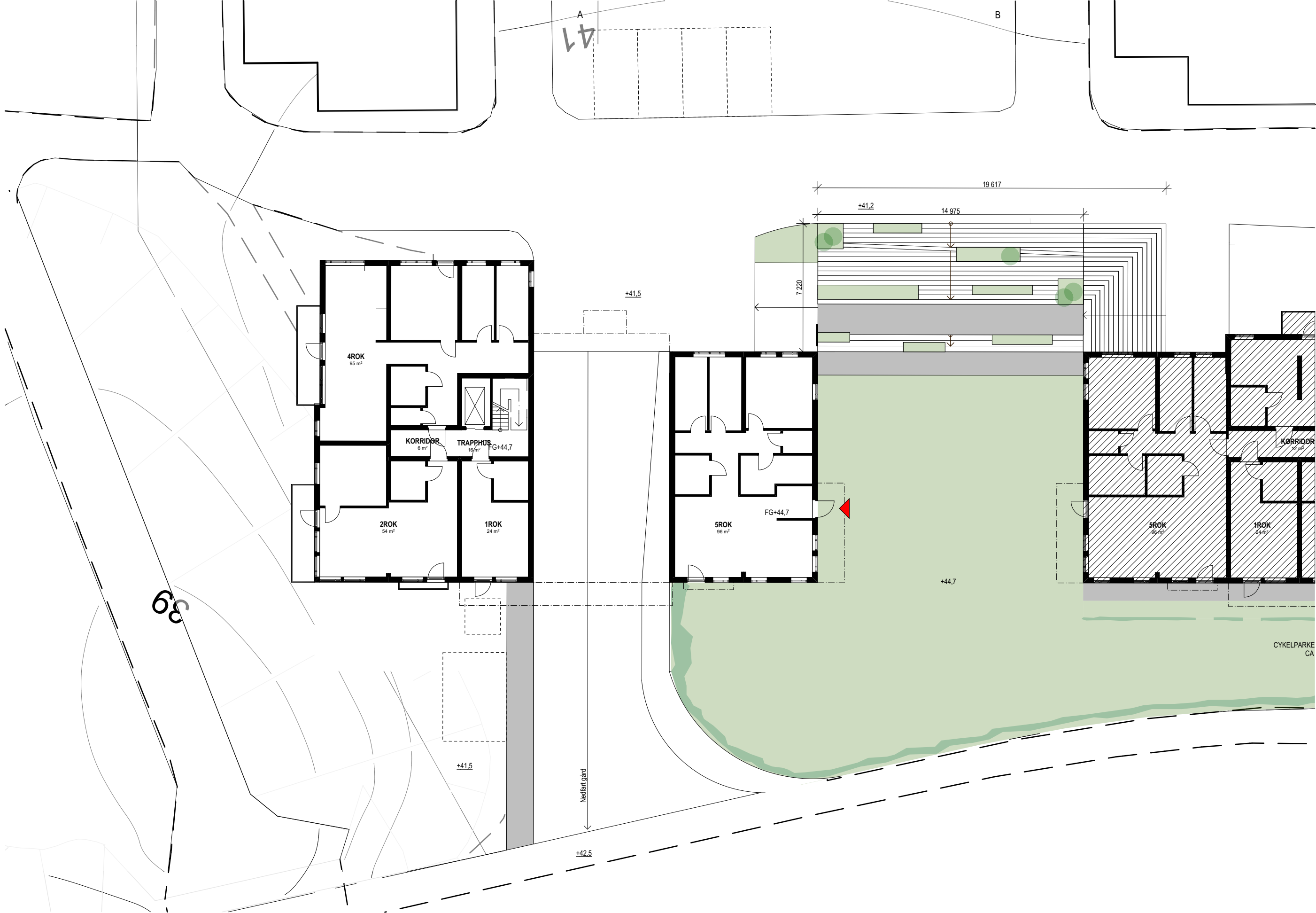
SKALA 1:500

Hasselholmen
Stångholmsbacken

Situationsplan
Skala 1:500 (A3)

Samrådsunderlag
2018-12-14 / AxLo

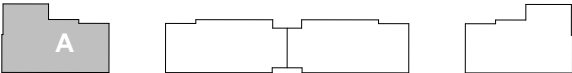


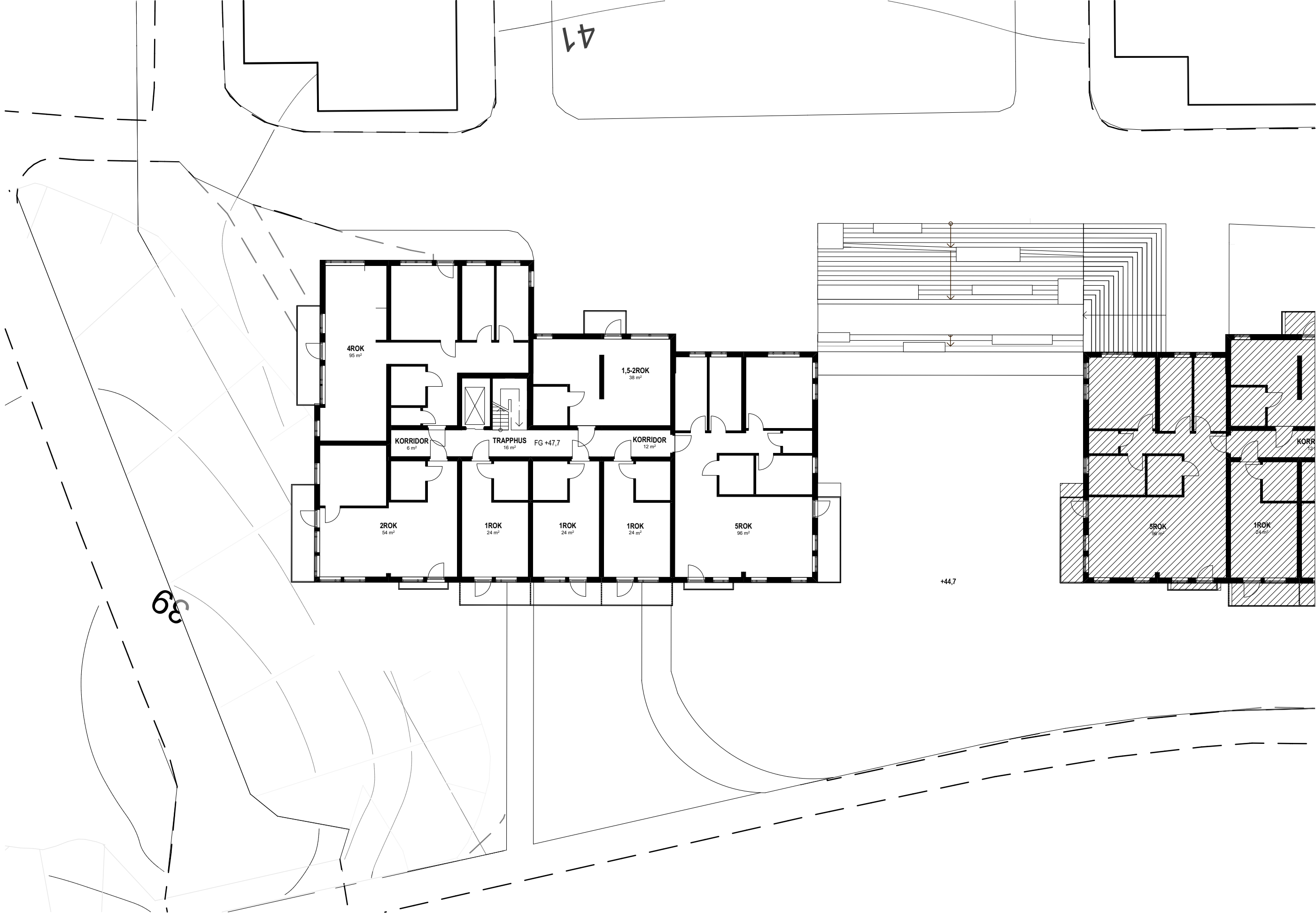


Hasselholmen
Stångholmsbacken

P1. Plan 1
Skala 1:200 (A3)

Samrådsunderlag
2018-12-14 / AxLo

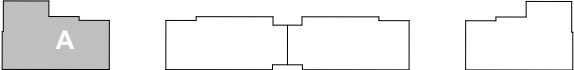


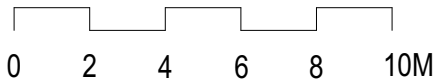
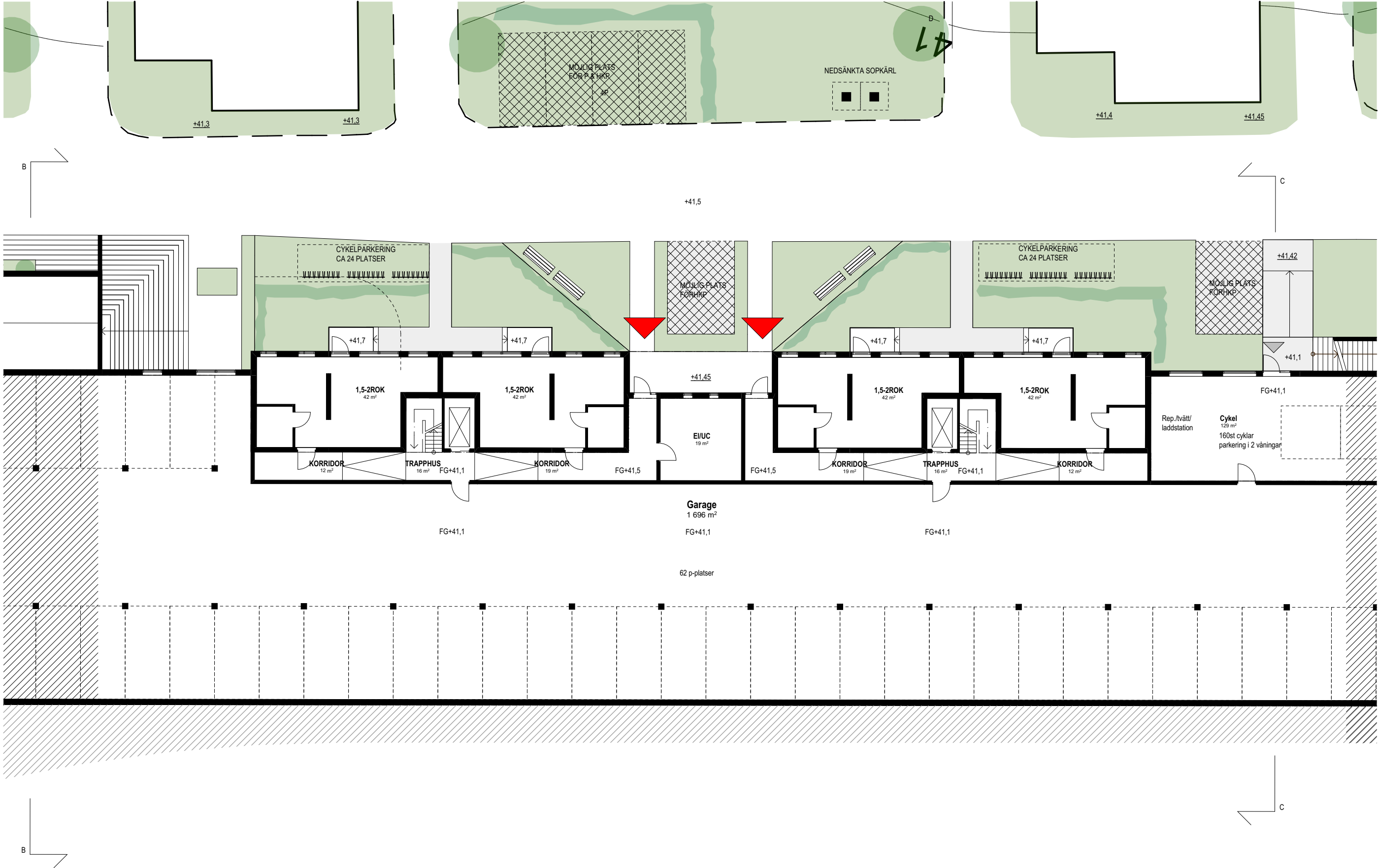


Hasselholmen
Stångholmsbacken

P2. Typplan
Skala 1:200 (A3)

Samrådsunderlag
2018-12-14 / AxLo



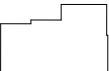
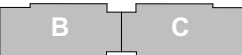


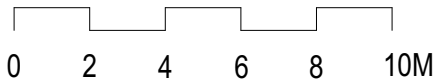
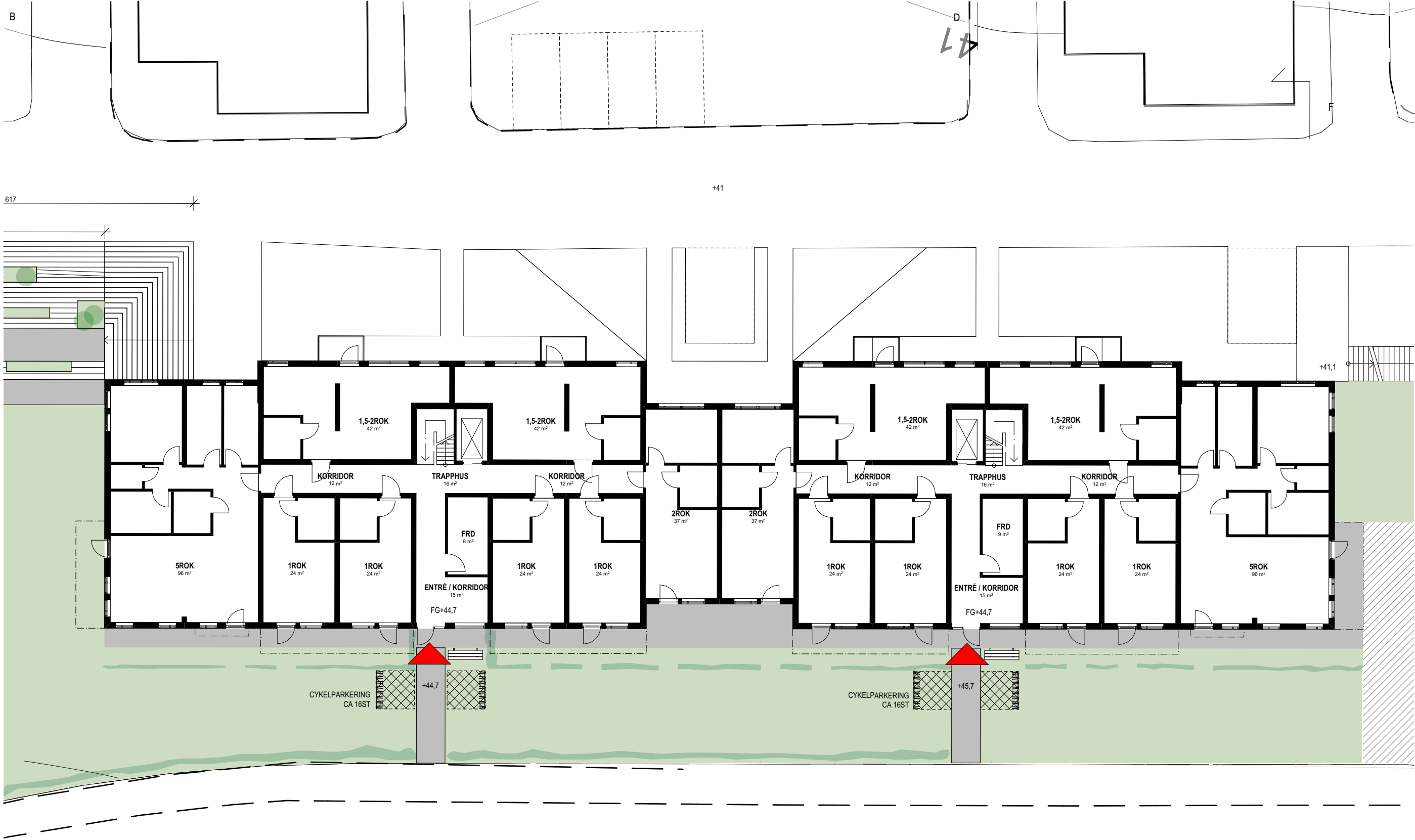
SKALA 1:200

Hasselholmen
Stångholmsbacken

P0. Gårdsplan
Skala 1:200 (A3)

Samrådsunderlag
2018-12-14 / AxLo



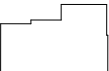
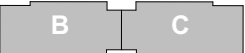


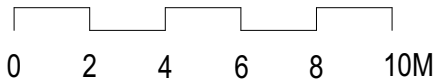
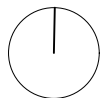
SKALA 1:200

Hasselholmen
Stångholmsbacken

P1. Entréplan
Skala 1:200 (A3)

Samrådsunderlag
2018-12-14 / AxLo



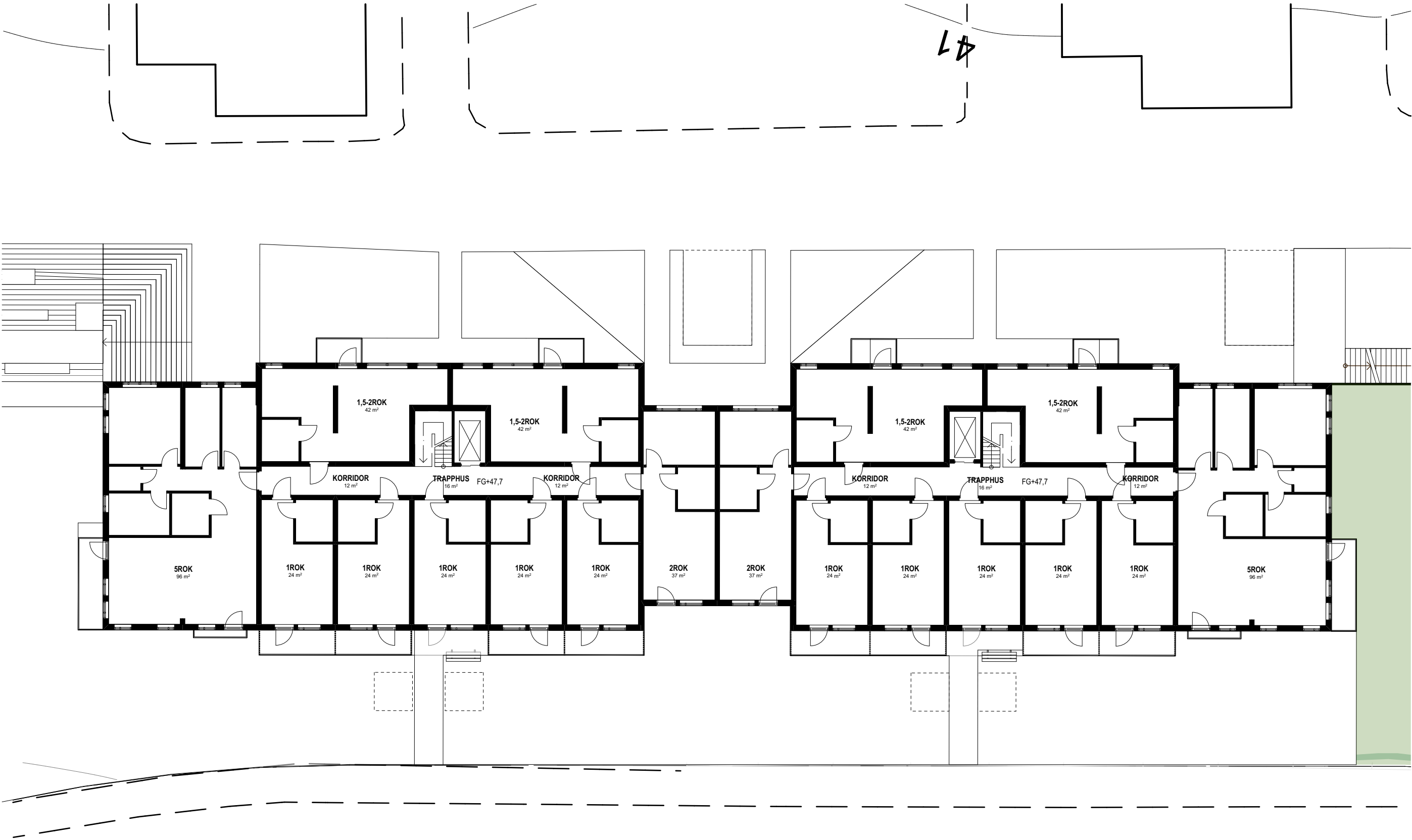
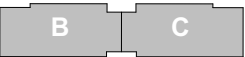


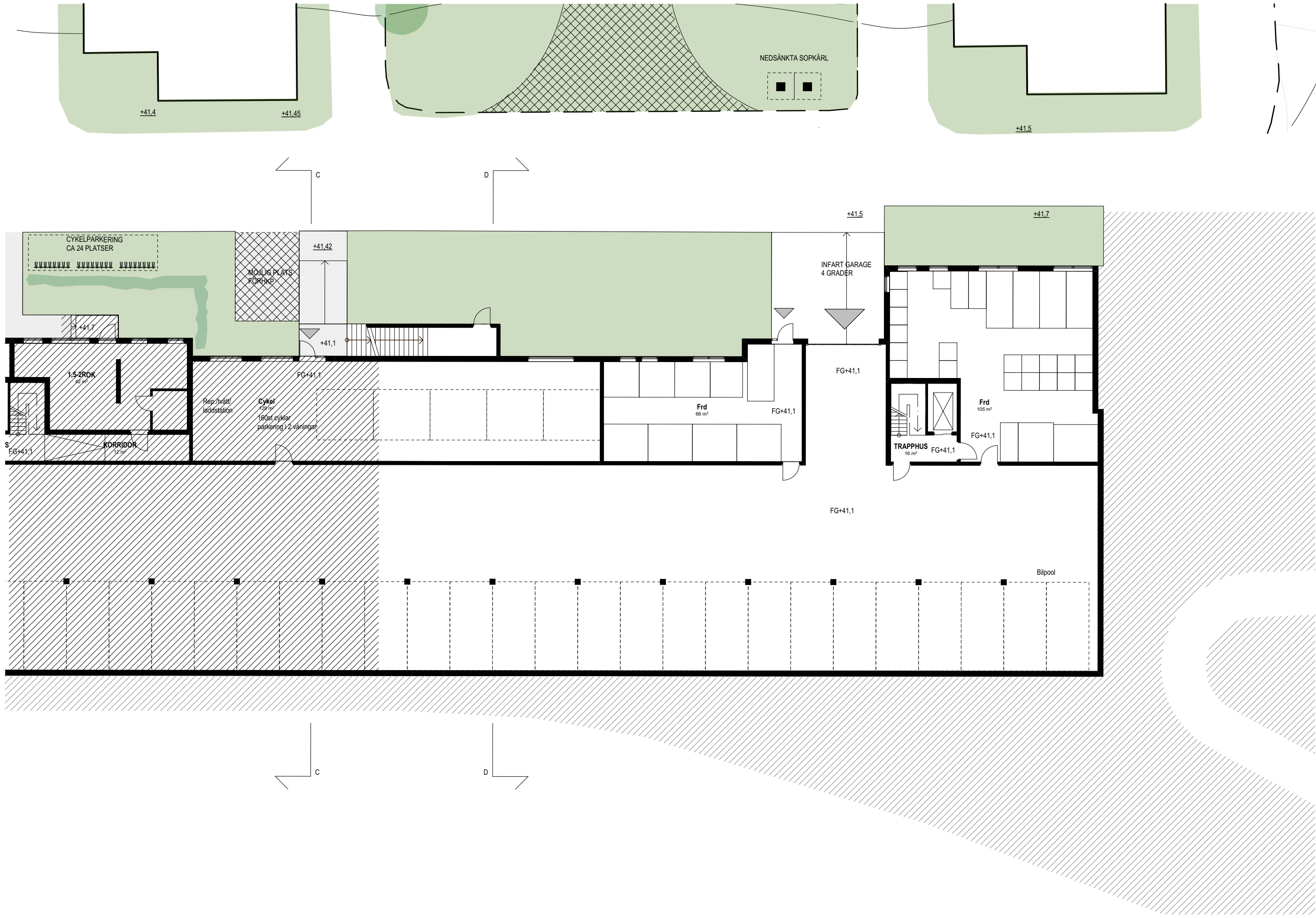
SKALA 1:200

Hasselholmen
Stångholmsbacken

P2-4. Typplan
Skala 1:200 (A3)

Samrådsunderlag
2018-12-14 / AxLo

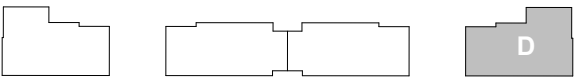


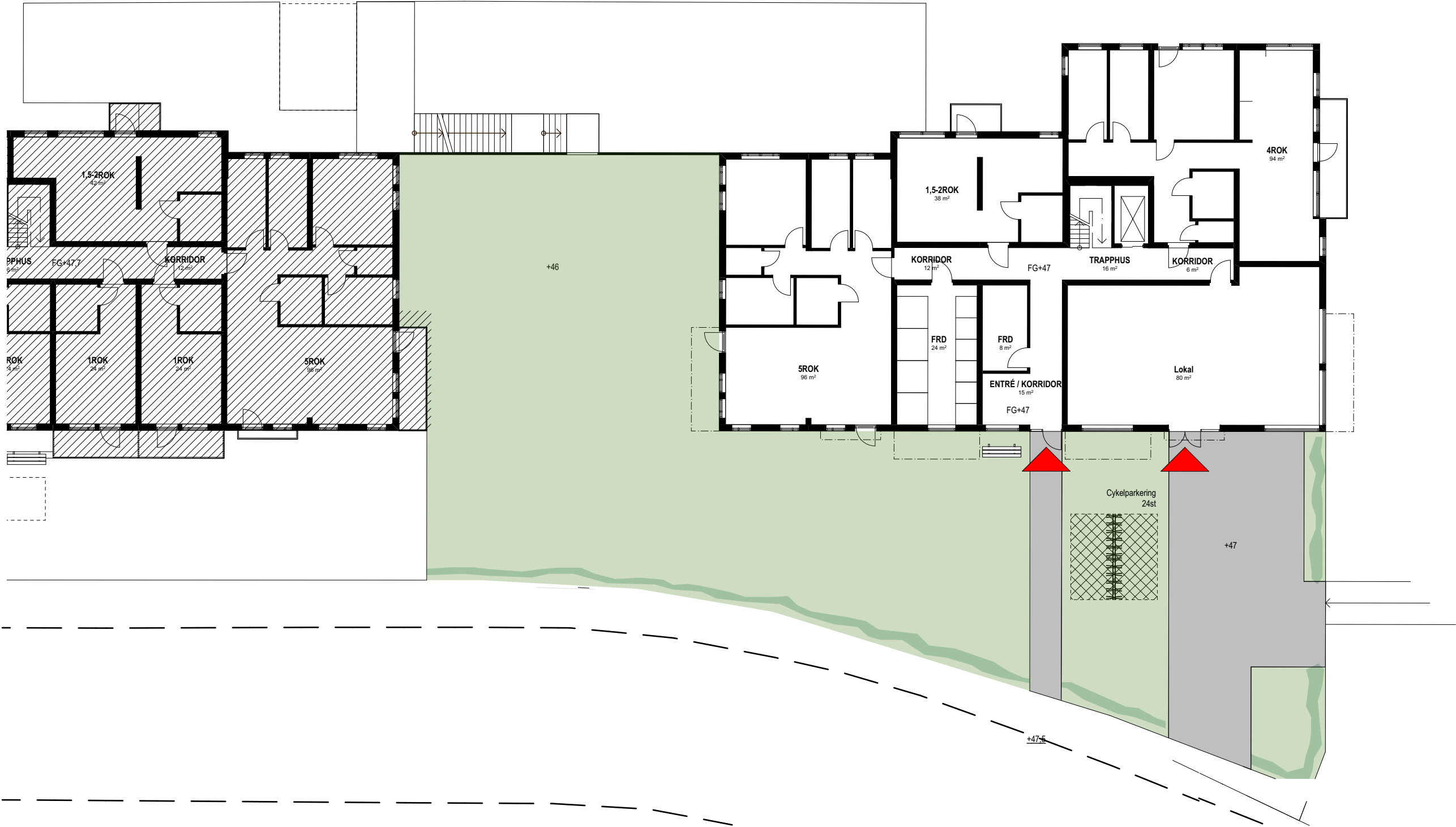


Hasselholmen
Stångholmsbacken

P0. Gårdsplan
Skala 1:200 (A3)

Samrådsunderlag
2018-12-14 / AxLo

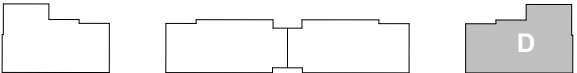


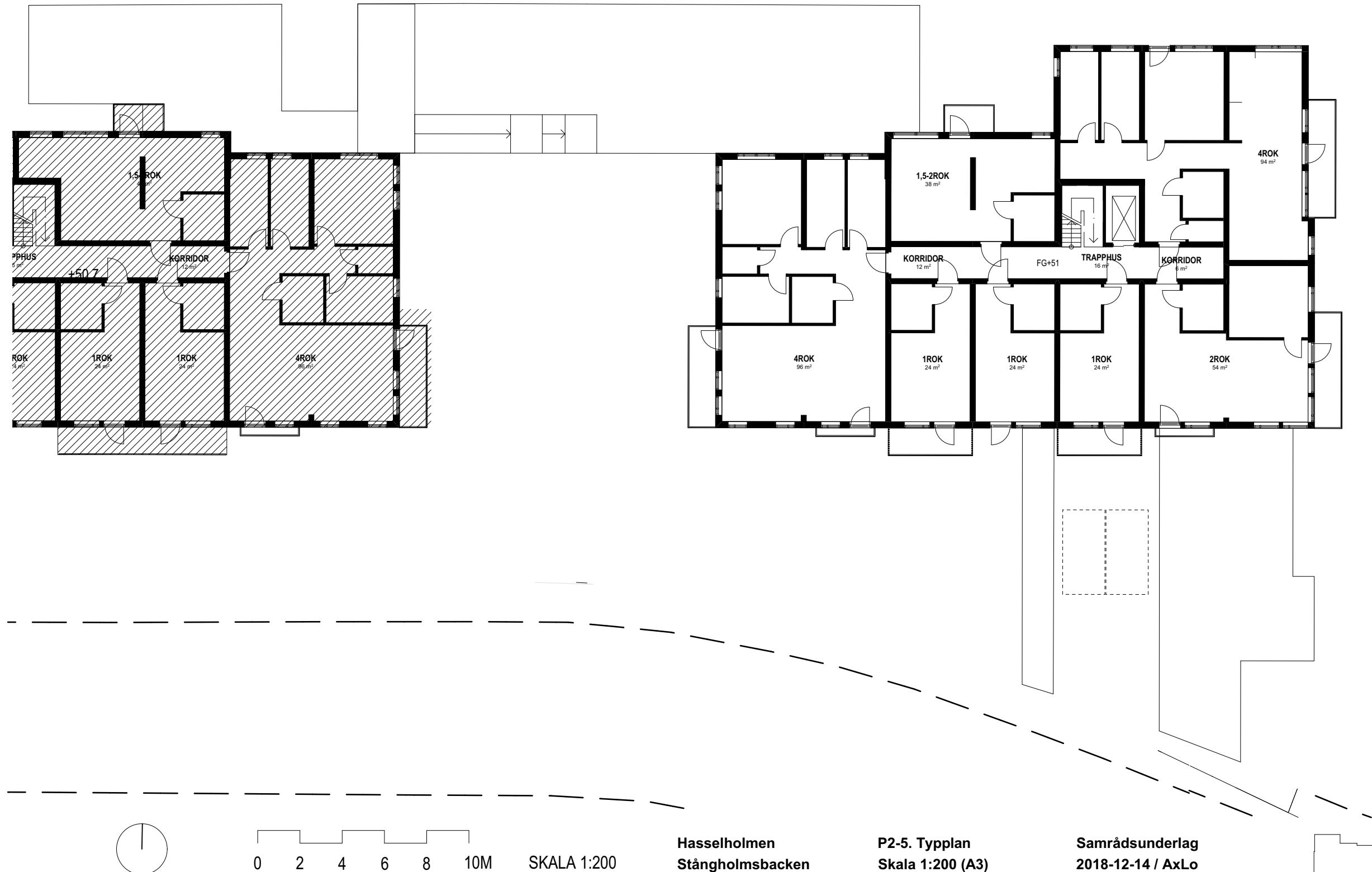


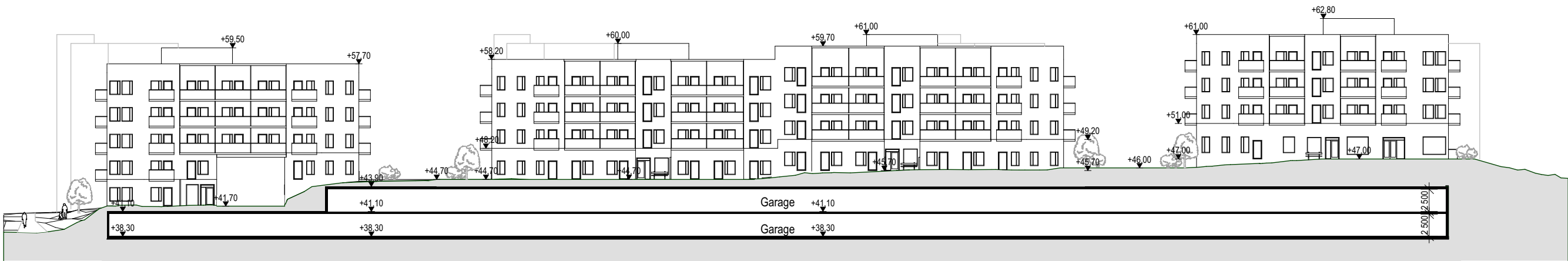
Hasselholmen
Stångholmsbacken

P2. Plan Entré
Skala 1:200 (A3)

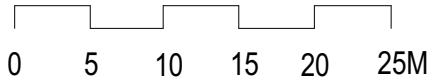
Samrådsunderlag
2018-12-14 / AxLo







Elevation / Sektion mot söder, från förgård

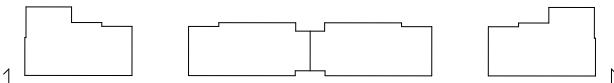


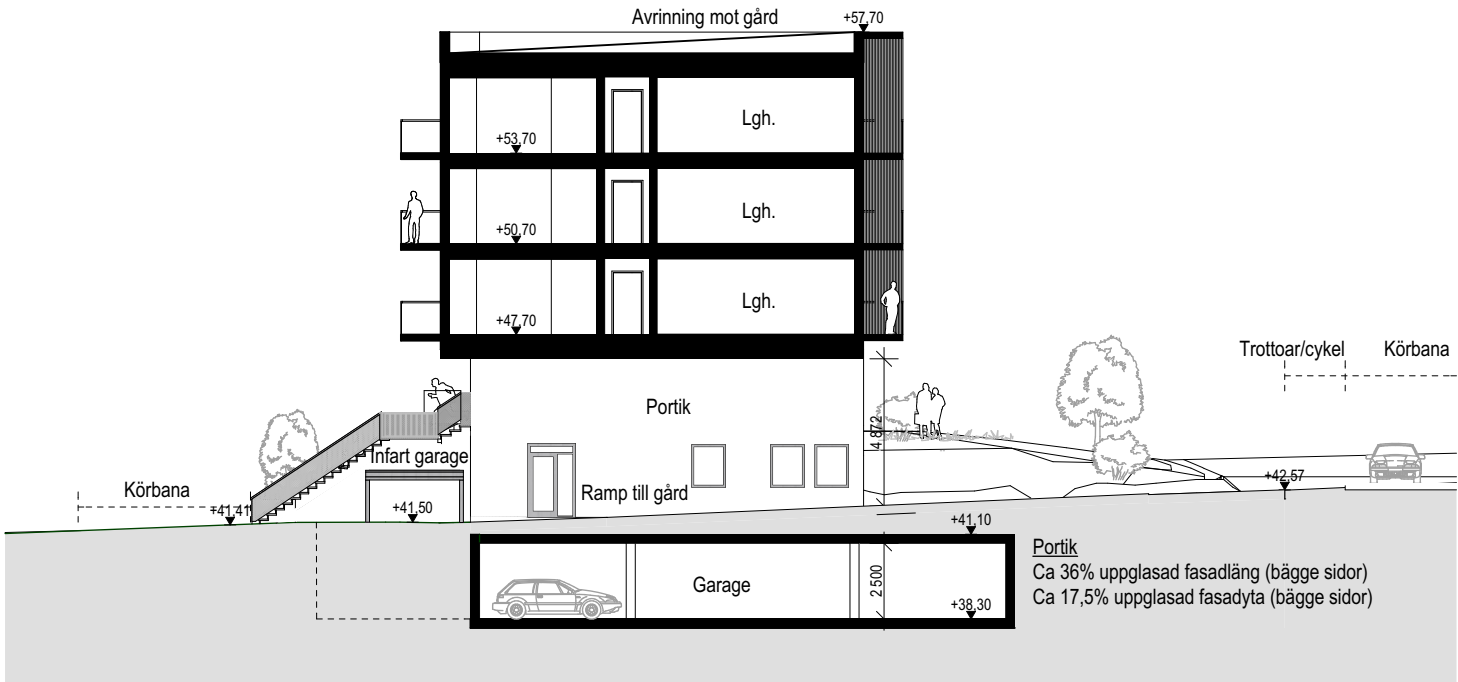
SKALA 1:500

Hasselholmen
Stångholmsbacken

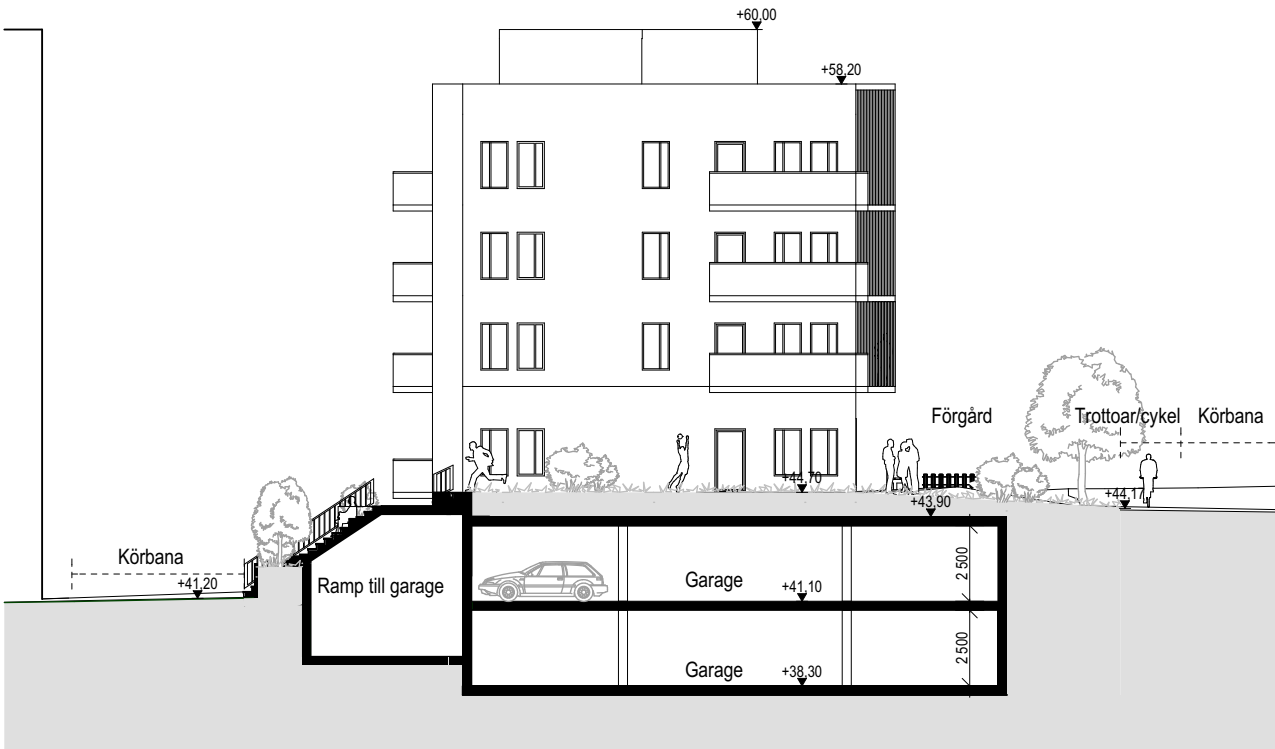
Elevation / Sektion
Skala 1:500 (A3)

Samrådsunderlag
2018-12-14 / AxLo

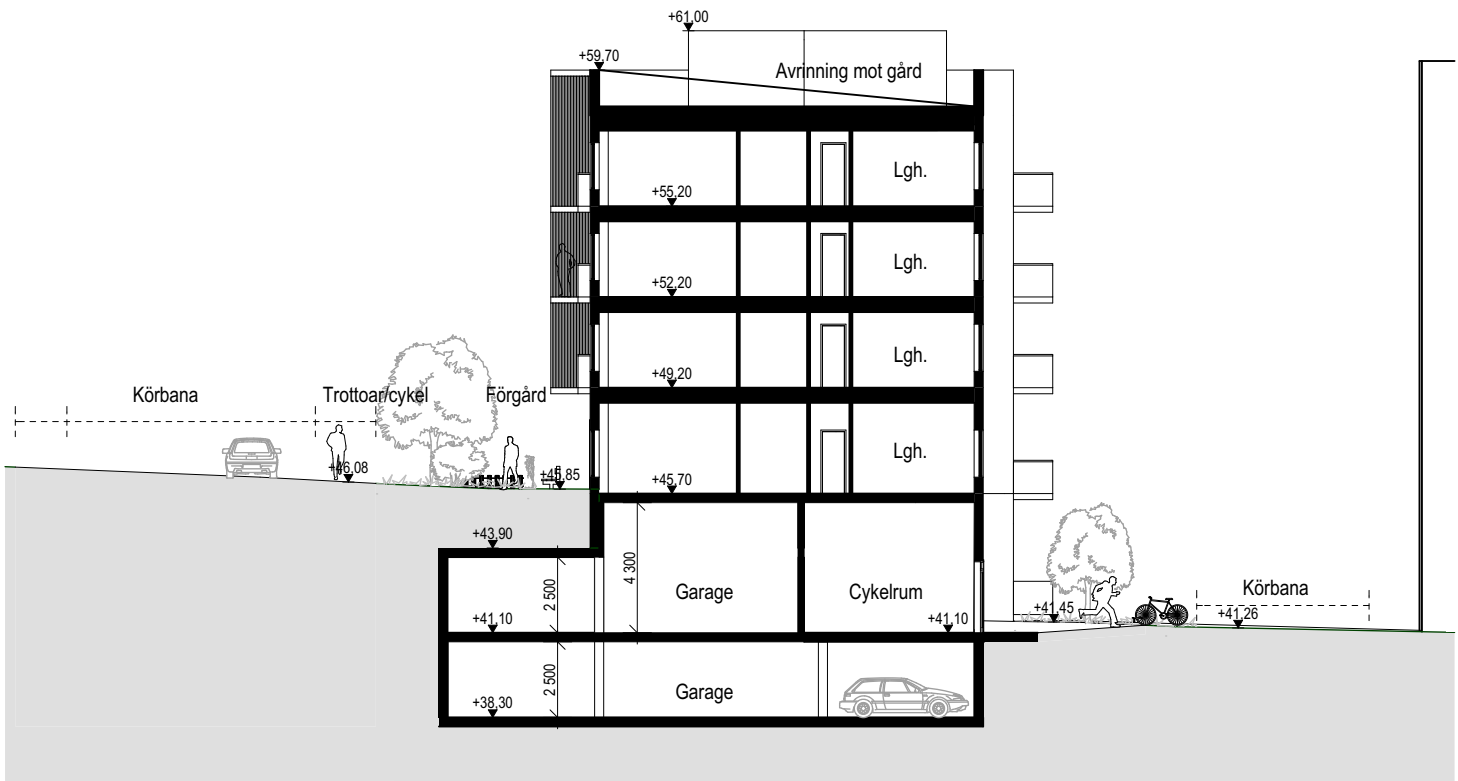




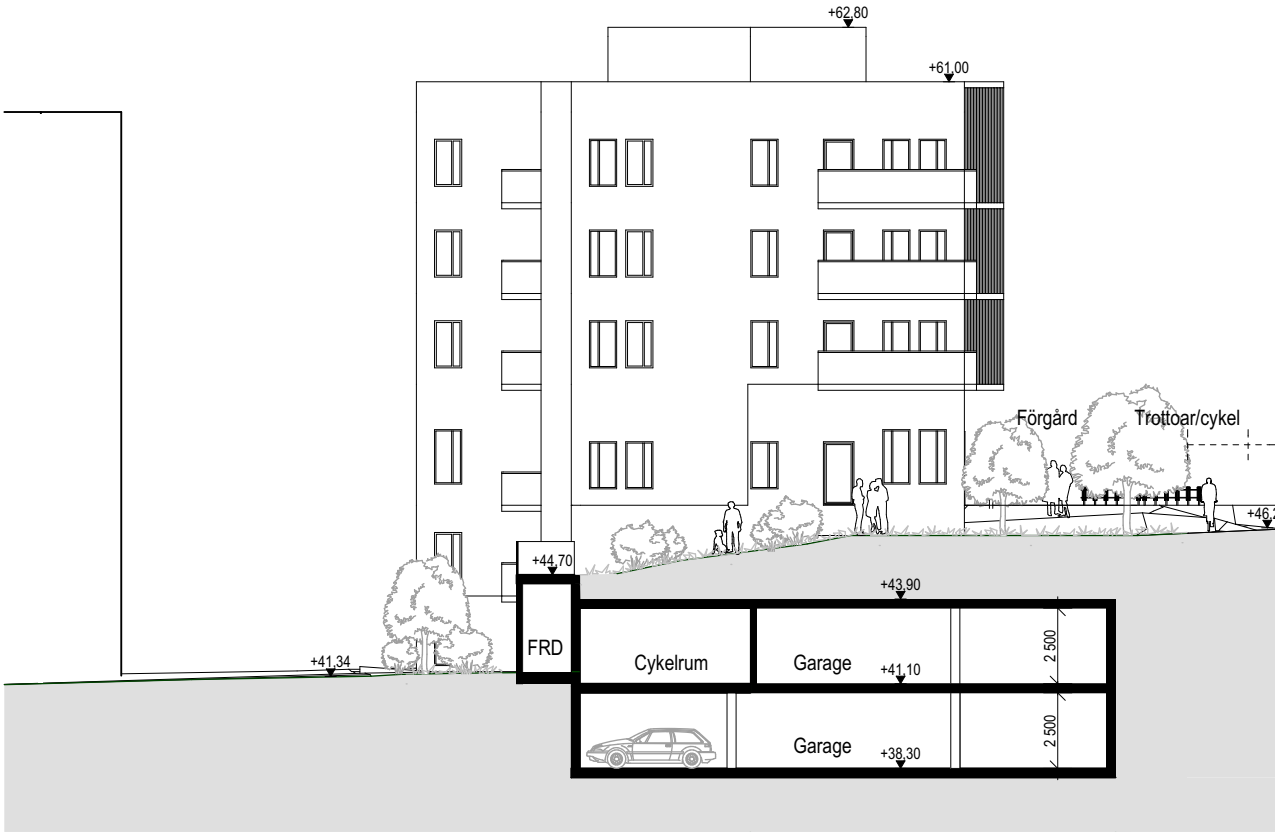
Sektion A-A



Sektion B-B



Sektion C-C



Sektion D-D

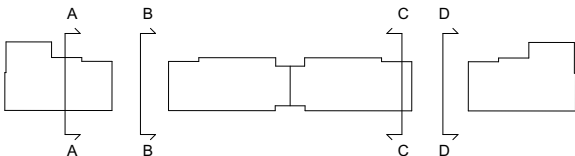


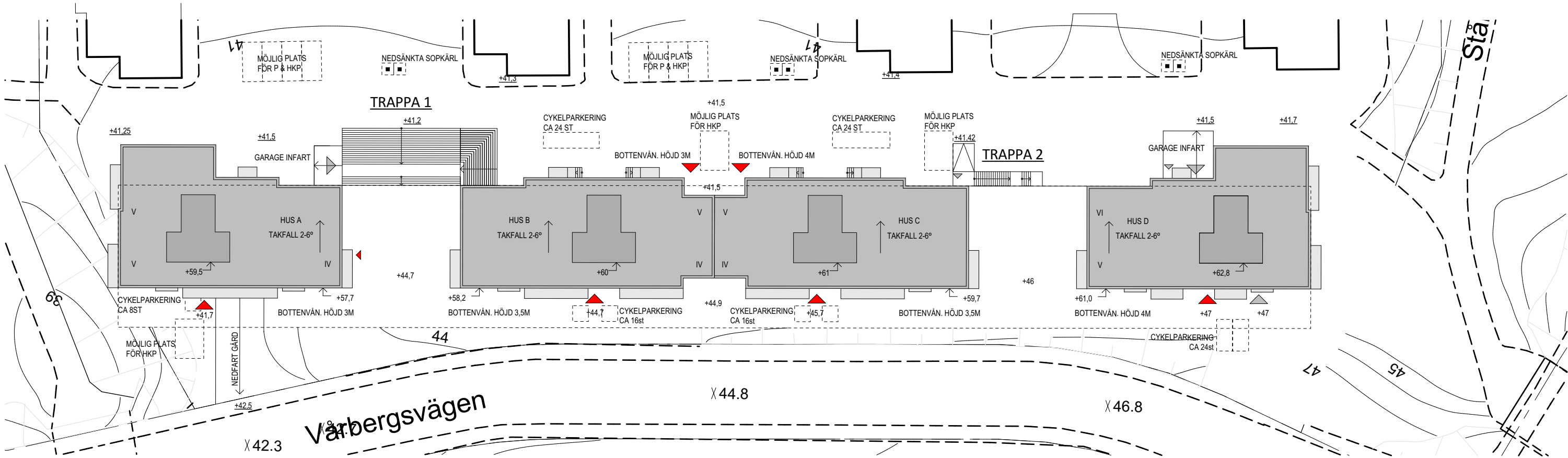
SKALA 1:250

Hasselholmen
Stångholmsbacken

Sektioner
Skala 1:250 (A3)

Samrådsunderlag
2018-12-14 / AxLo





HUS A (exl. garage)

BTA (CA)	1 915m ²
BYA (CA)	440m ²

HUS B (exl. garage)

BTA (CA)	1 885m ²
BYA (CA)	435m ²

HUS C (exl. garage)

BTA (CA)	1 885m ²
BYA (CA)	435m ²

HUS D (exl. garage & gårdsplan)

BTA (CA)	2 250m ²
BYA (CA)	440m ²
LOA (CA)	80m ²

DELADE YTOR (exl. Hus A-D)

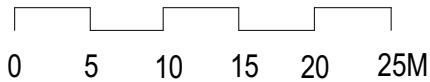
P0, Gårdsplan (Garage, Miljö, Cykel, FRD)	
BTA (CA)	2 125m ²
P-1, Garage (inkl. ramp under trappa1)	
BTA (CA)	2 880m ²
Gårdstrappa 1	
BYA (CA)	140m ²
Gårdstrappa 2	
BYA (CA)	15m ²

TOTALT

BTA (CA)	13 000m ²
BYA (CA)	1 905m ²
LOA (CA)	80m ²

LÄGENHETSFÖRDELNING

		st.
1 ROK	24m ²	57 st.
1,5 ROK	38m ²	8 st.
1,5 ROK	42m ²	20 st.
2 ROK	37m ²	8 st.
2 ROK	54m ²	8 st.
4 ROK	95m ²	10 st.
5 ROK	96m ²	16 st.
TOTALT		127 st.



SKALA 1:500

Hasselholmen
Stångholmsbacken

Sammanställning
Skala 1:500 (A3)

Samrådsunderlag
2018-12-14 / AxLo