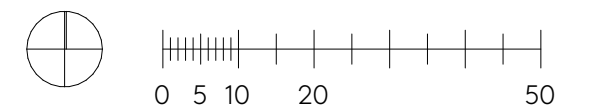




Tomt E
 _Situationsplan _bebyggelse
 1:1000
 2025-01-14

Ikano
 Vinstavägen/Nälstastråket

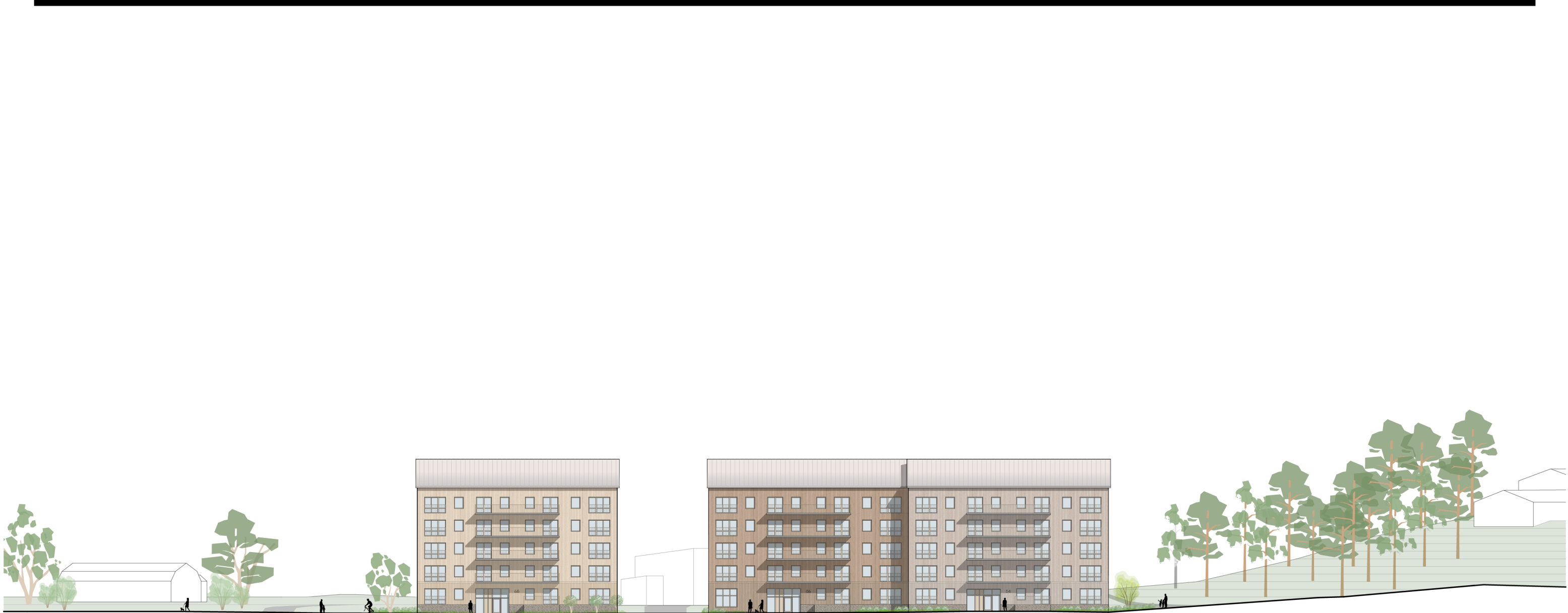
ÅWL Arkitekter



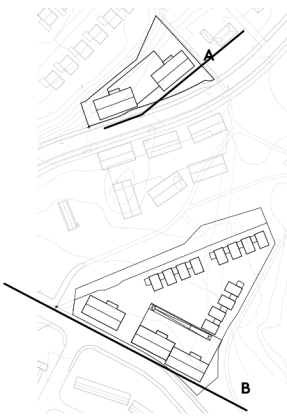
Tomt E
_Situationsplan_gård
1:1000
2025-01-14

Ikano
Vinstavägen/Nälstastråket

ÅWL Arkitekter



Fasad B
Tomt E - Skattegårdsvägen

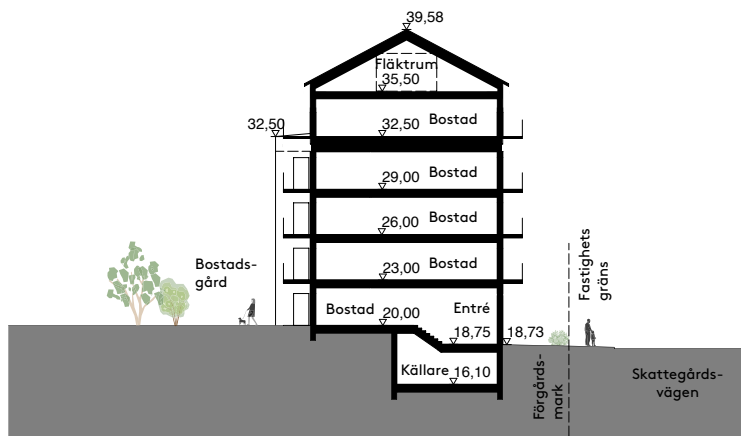


Inkom till Stockholms stadsbyggnadskontor - 2025-05-05, Dnr 2020-09138

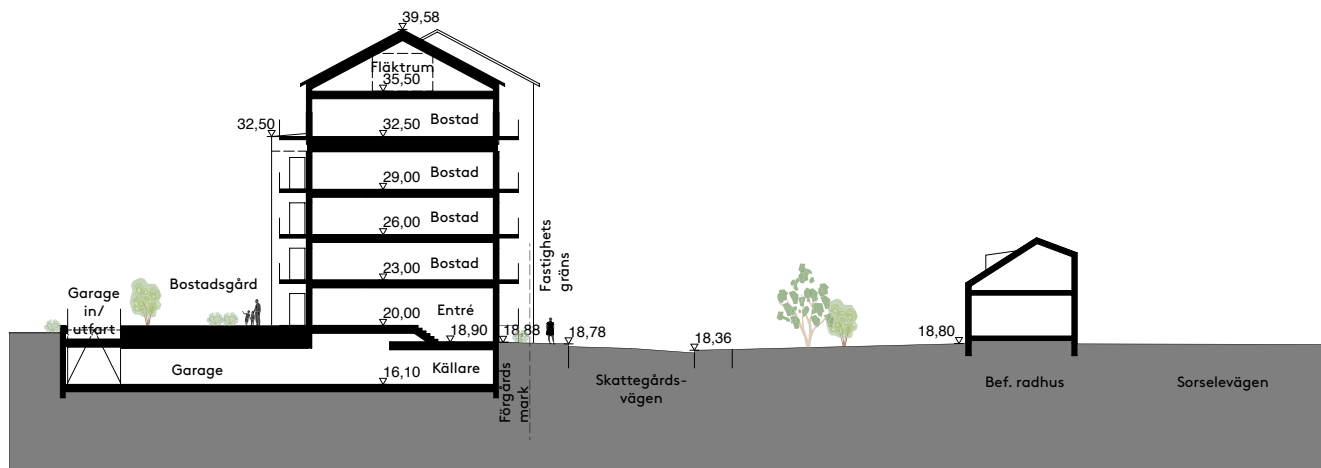
Tomt E
1:500
2025-02-04

Ikano
Vinstavägen/Nälstastråket

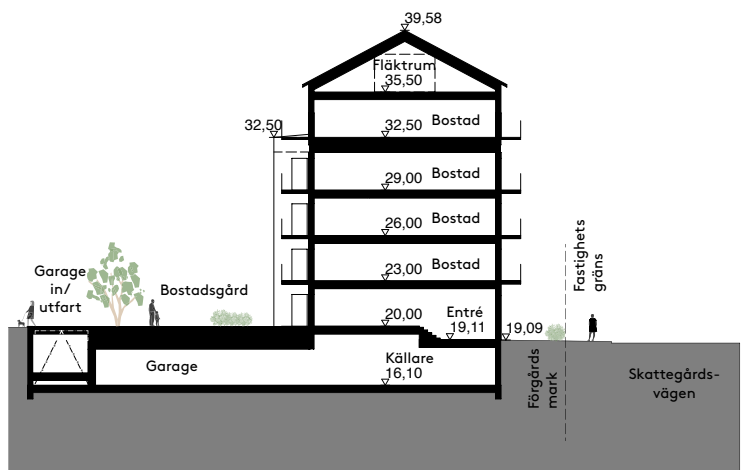
ÅWL Arkitekter



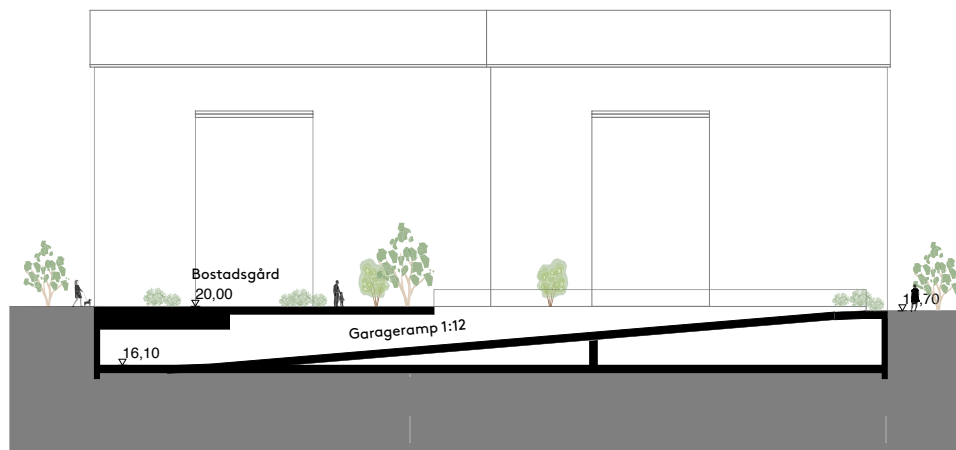
Sektion AA



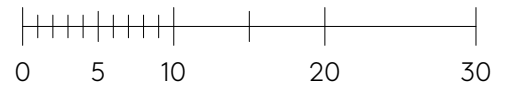
Sektion BB

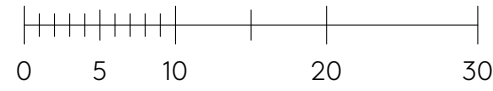
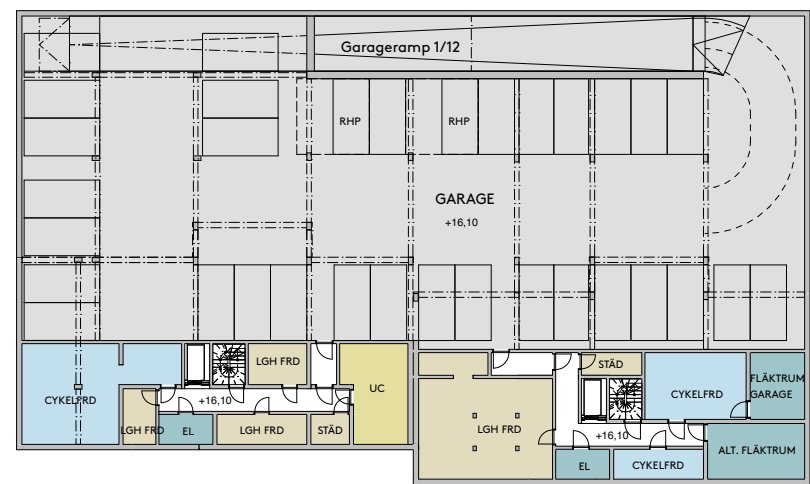
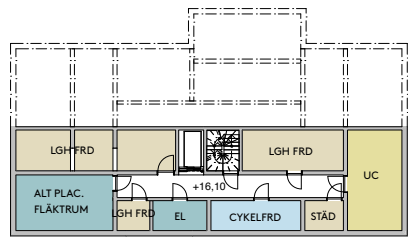
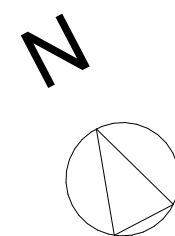


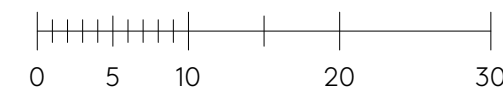
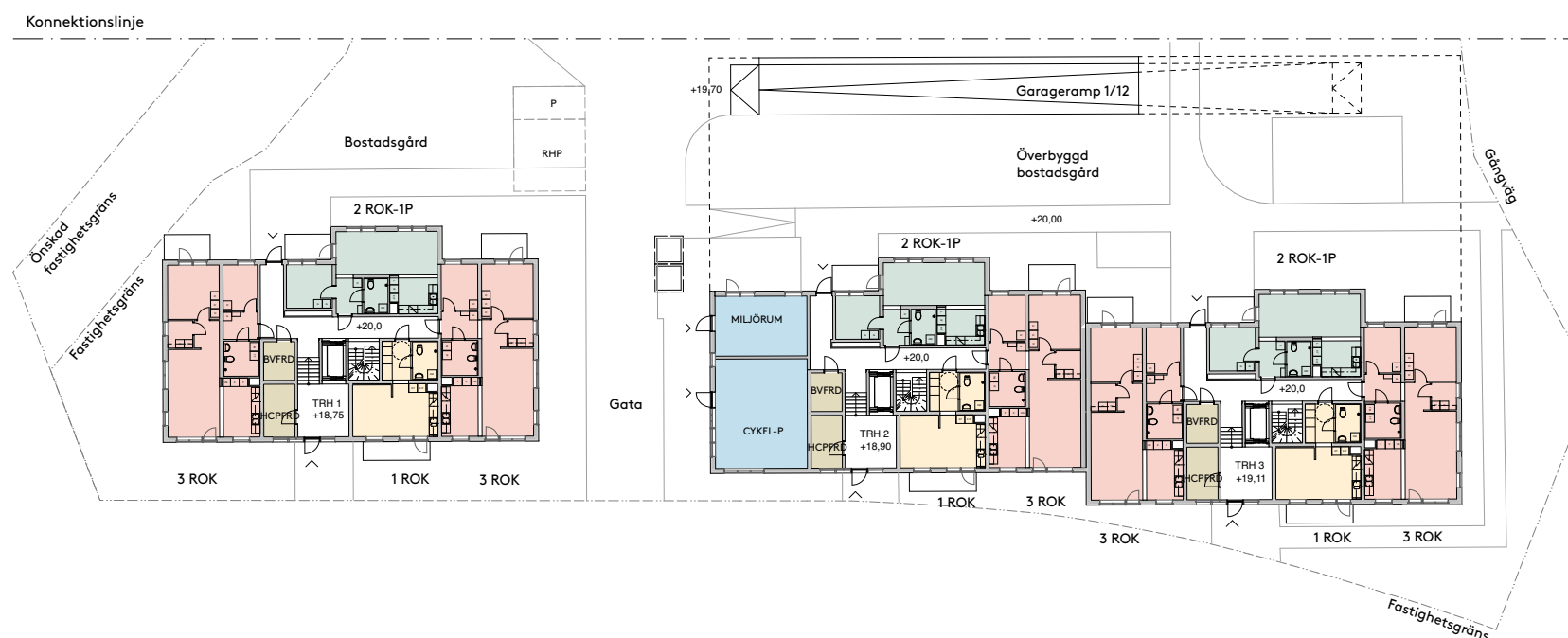
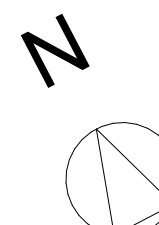
Sektion CC

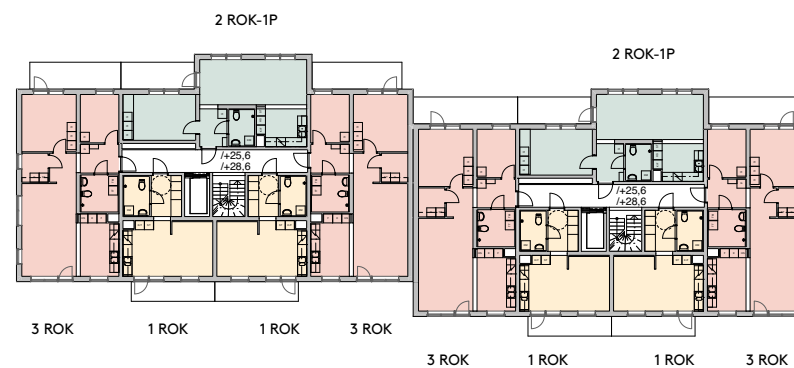
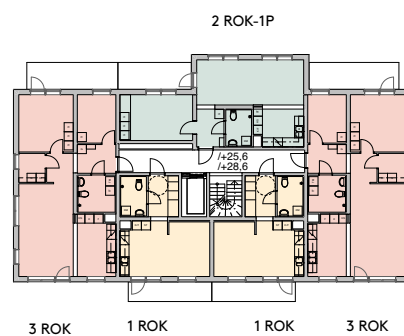
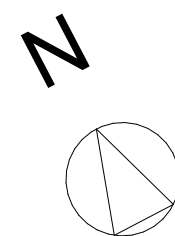


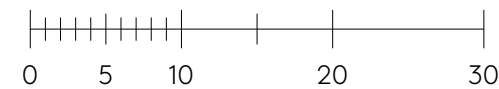
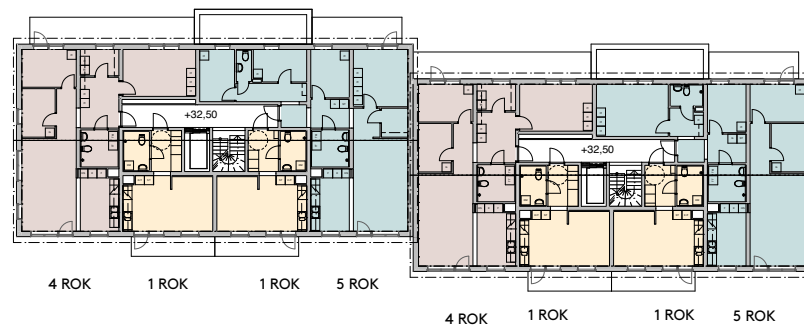
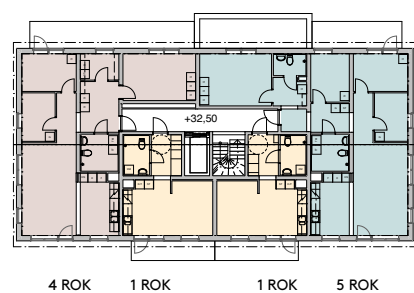
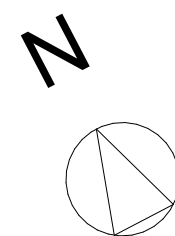
Sektion DD







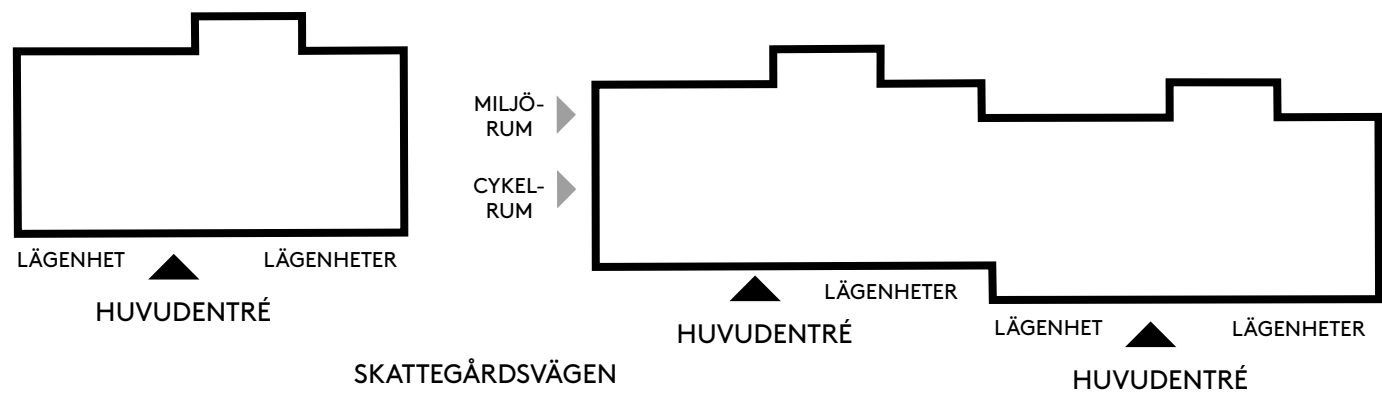


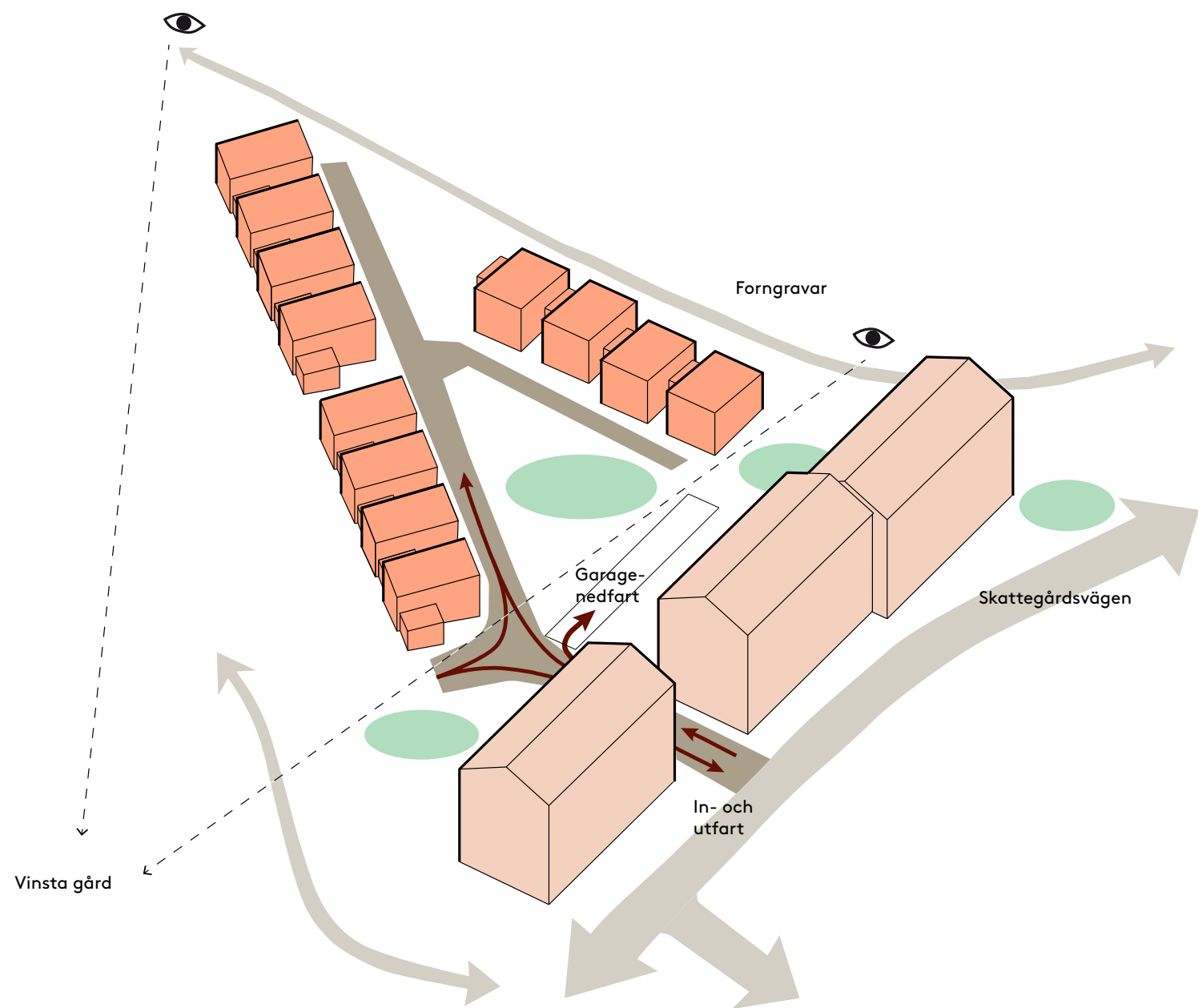


Tomt E, Plan 14, Övre plan
1:500
2025-01-14

Ikano
Vinstavägen/Nälstastråket

ÅWL Arkitekter







Tomt E

Flerbostadshus

BTA	7 000 m2
Ljus BTA	5 225 m2
Mörk BTA	1 775 m2
BOA	3 870 m2
Antal lägenheter	68 st
Antal bil-p	30 st i garage varav 2 st RHP 1 st bilpoolplats 2 st besöksparkering i garage 1 st besöksparkering på gård
Antal cykel-p	154 st varav 64 st inomhus i gatunivå 72 st inomhus från garage 18 st utomhus på förgårdsmark

Antal bil-p/lägenhet 0,46

Antal cykel-p/lägenhet 2,26

Lägenhetsfördelning - Flerbostadshus	
Typ	Antal lgh
1 ROK	27
2 ROK-1P	12
3 ROK	23
4 ROK	3
5 ROK	3
	68

Tomt E - Radhus

BTA	1 705 m2
Ljus BTA	1 705 m2
Mörk BTA	0 m2
BOA	1 450 m2
Antal radhus	12 st
Antal bil-p	15 st varav 12 st på tomter 2 st RHP 1 st besöksparkering
Antal bil-p/lägenhet	1,25

Lägenhetsfördelning - Radhus

6 ROK 12 st

Antal komplementsbyggnader 12 st à 7 m2

BTA komplementsbyggnader 84 m2

Nockhöjd radhus 8,0m över marknivå mot gata

Nockhöjd komplementsbyggnader 3,5m över marknivå

Tomt E - Totalt

BTA	8 705 m2
Ljus BTA	6 930 m2
Mörk BTA	1 775 m2
BOA	5 320 m2
Antal lägenheter och radhus	80 st



