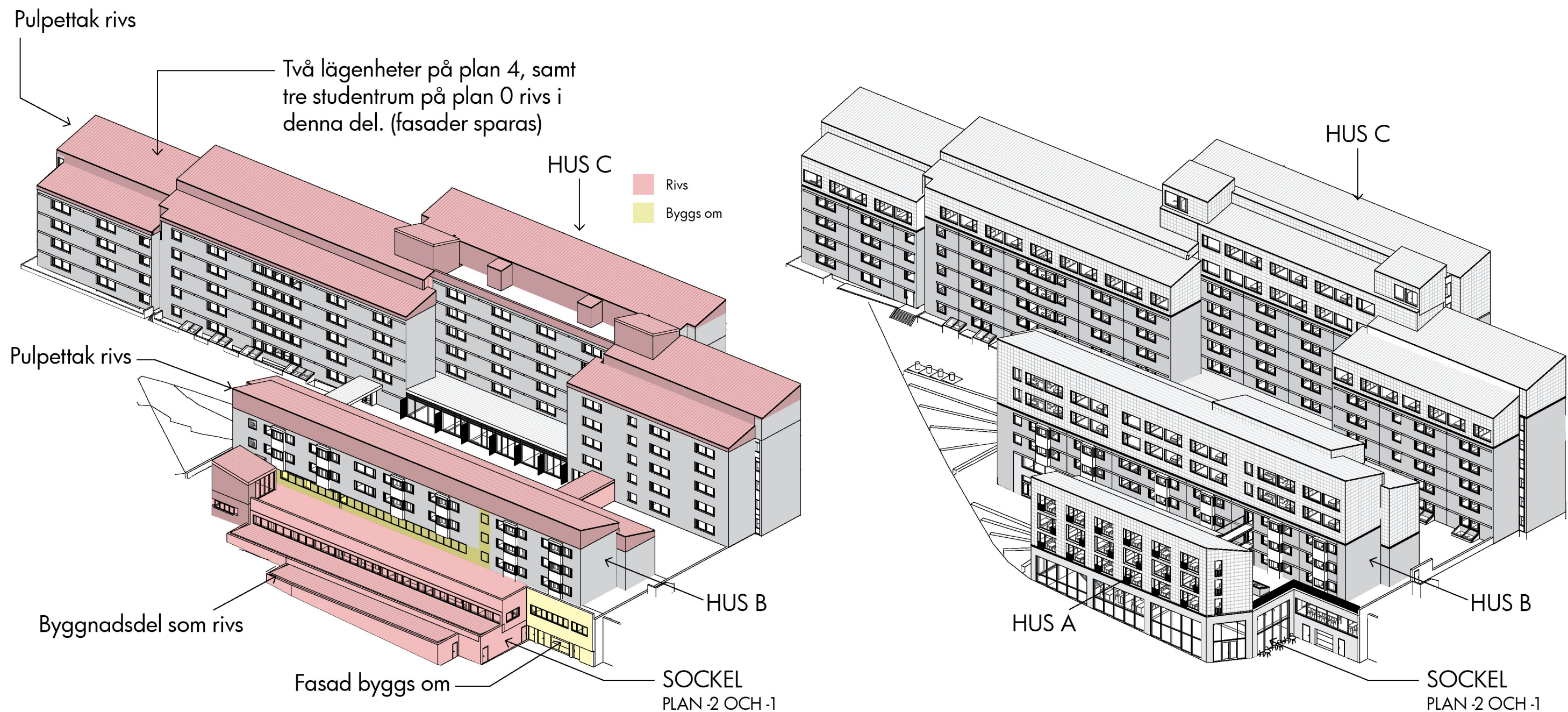


OM- OCH TILLBYGGNAD  
**SSSB FORUM**  
ROSLAGSBANAN 18

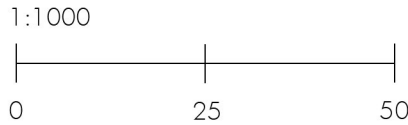
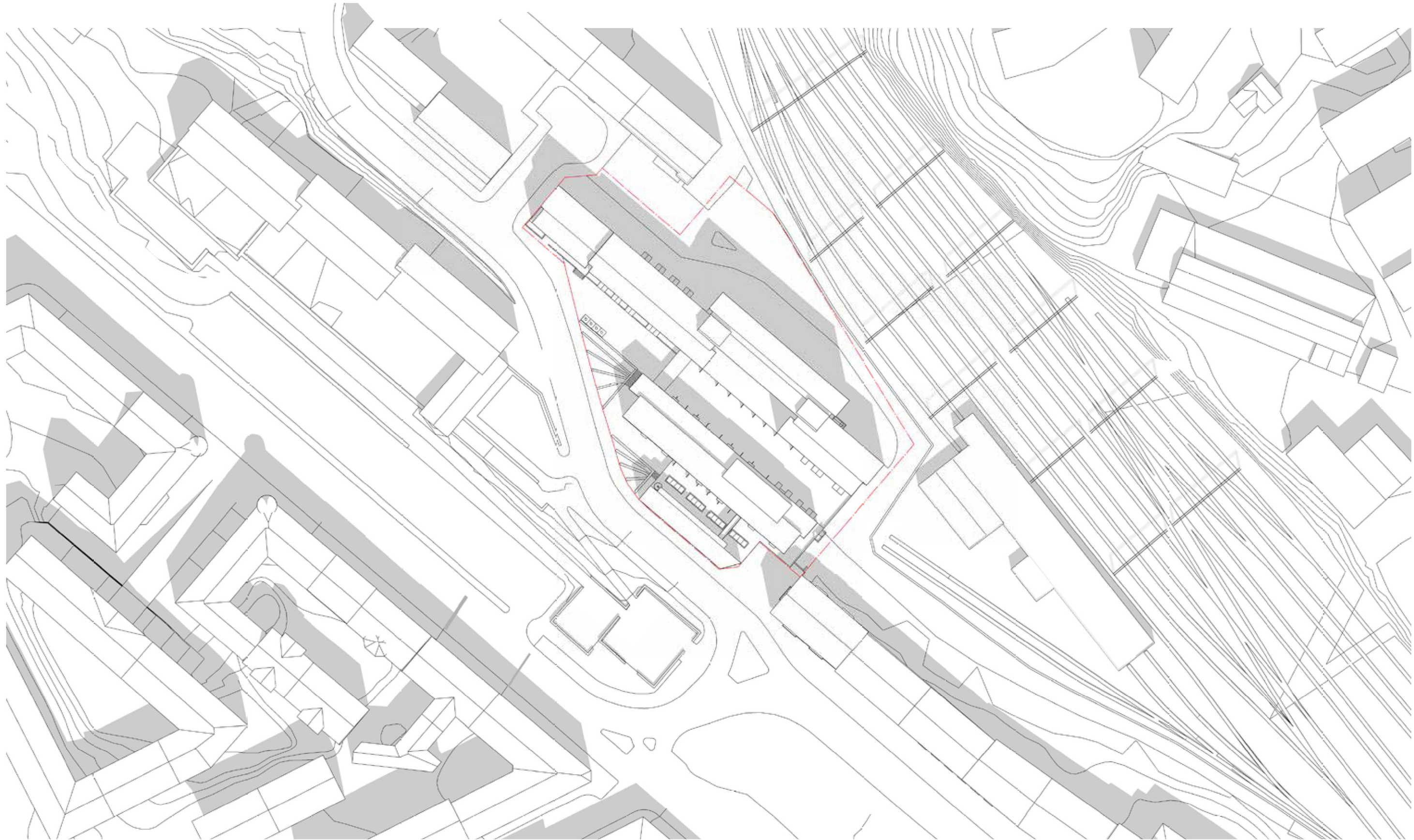
GRANSKNING  
2021-06-22

ÖVERSIKT



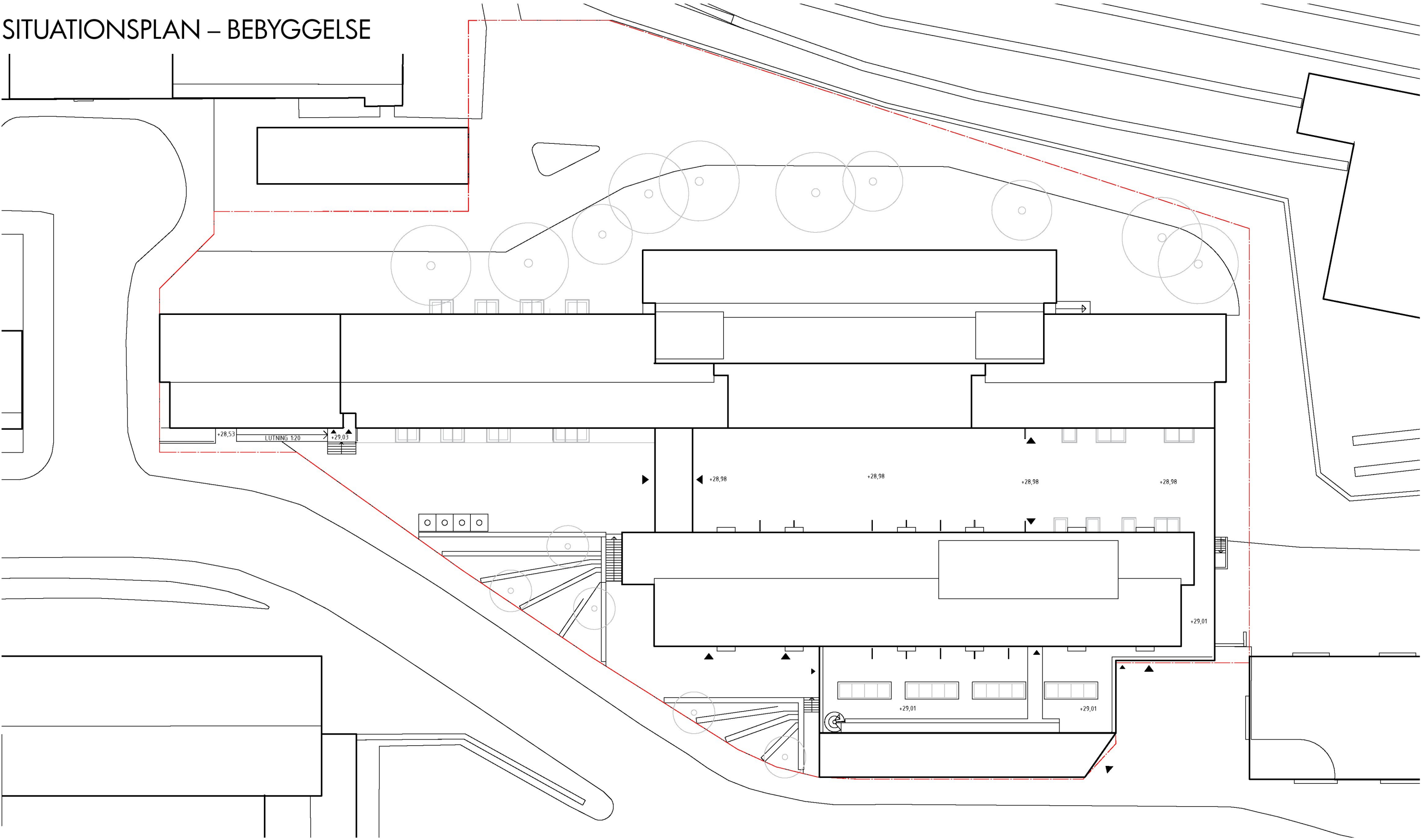


SITUATIONSPLAN – FÖRENKLAD

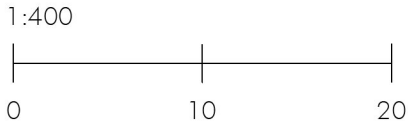




SITUATIONSPLAN – BEBYGGELSE

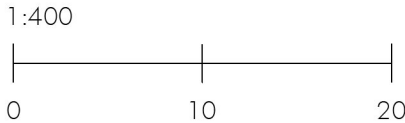
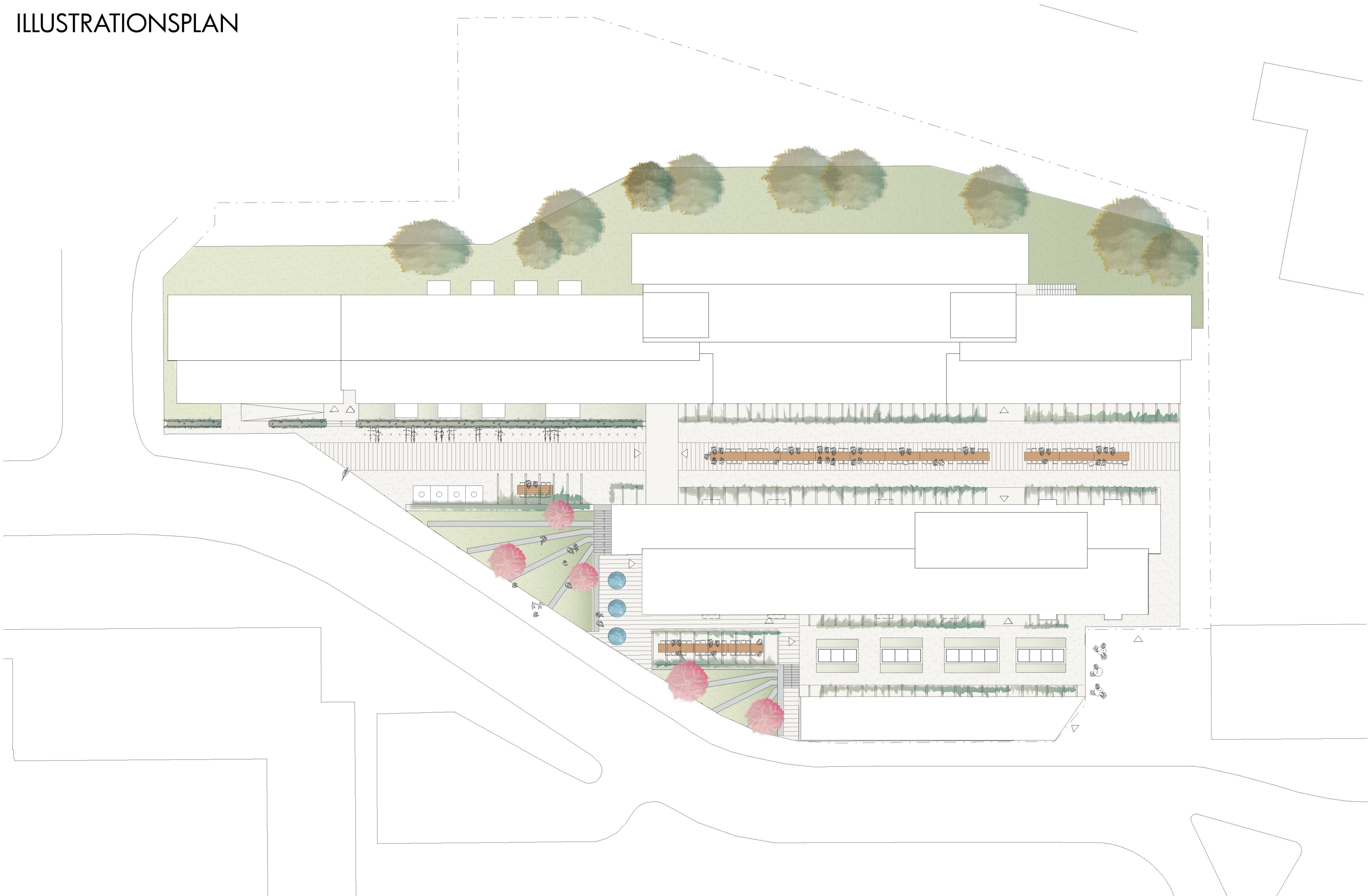


Situationsplan – Bebyggelse



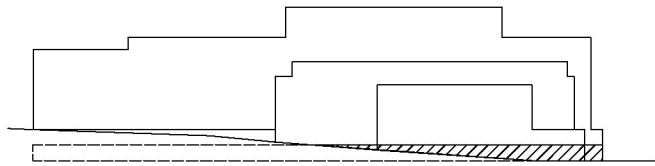


ILLUSTRATIONSPLAN

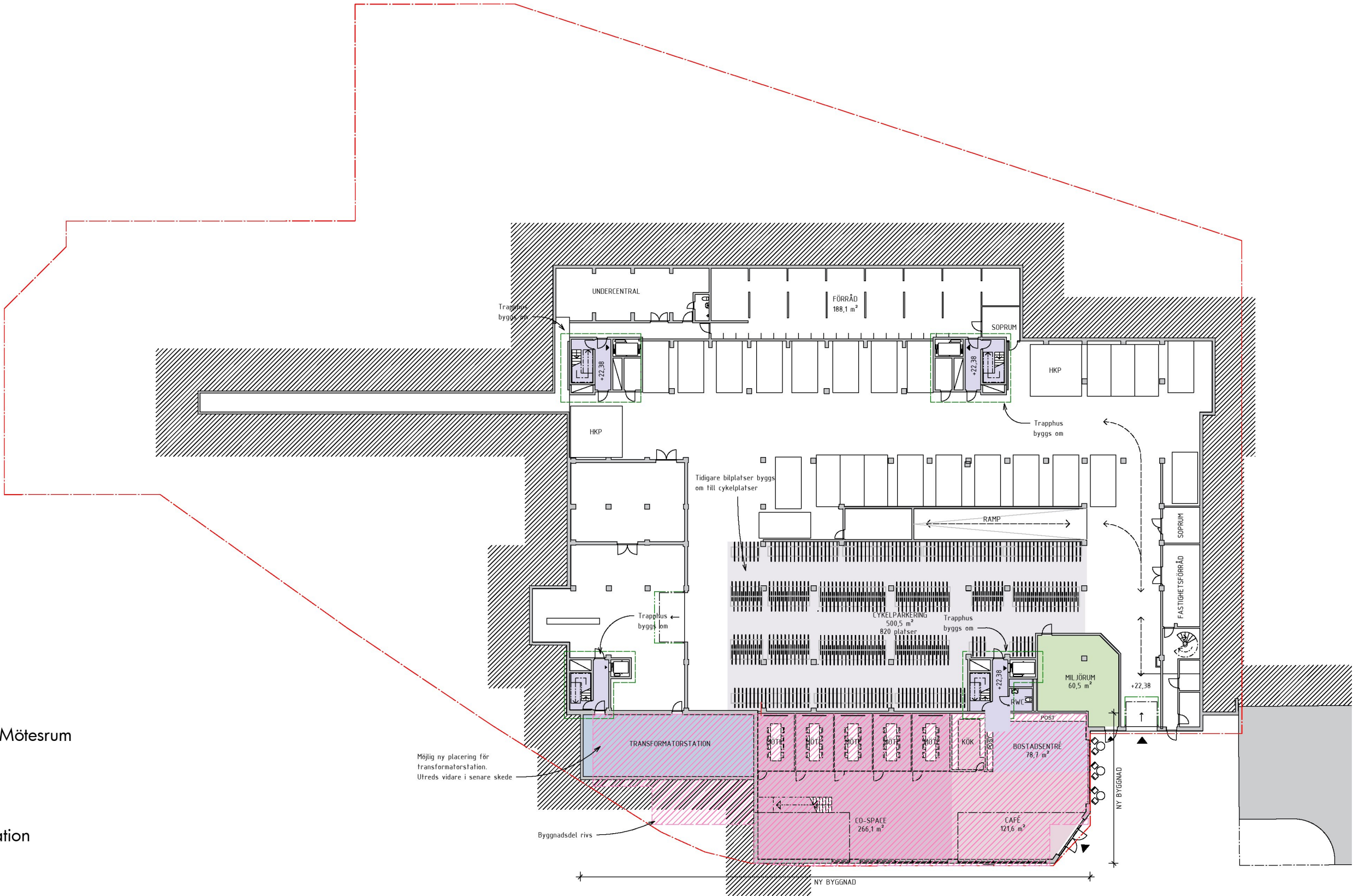
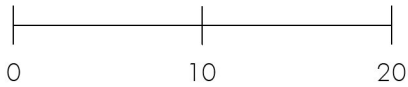


PLAN -2

- Studentcafé
- Co-working space/Mötesrum
- Bostadsentré
- Nytt miljörum
- Ny transformatorstation
- Cykelförråd
- Byggnadsdel rivs

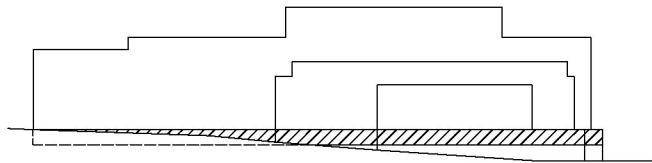


1:400





Inkom till Stockholms stadsbyggnadskontor - 2021-09-07, Dnr 2017-18577



A horizontal number line with three vertical tick marks. Below the first tick mark is the number 0, below the second is 10, and below the third is 20. The line extends slightly beyond the first and last tick marks.



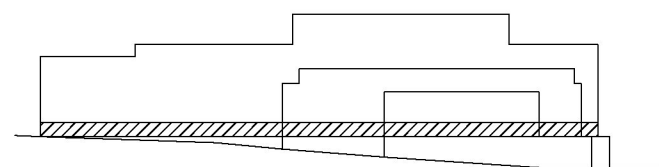
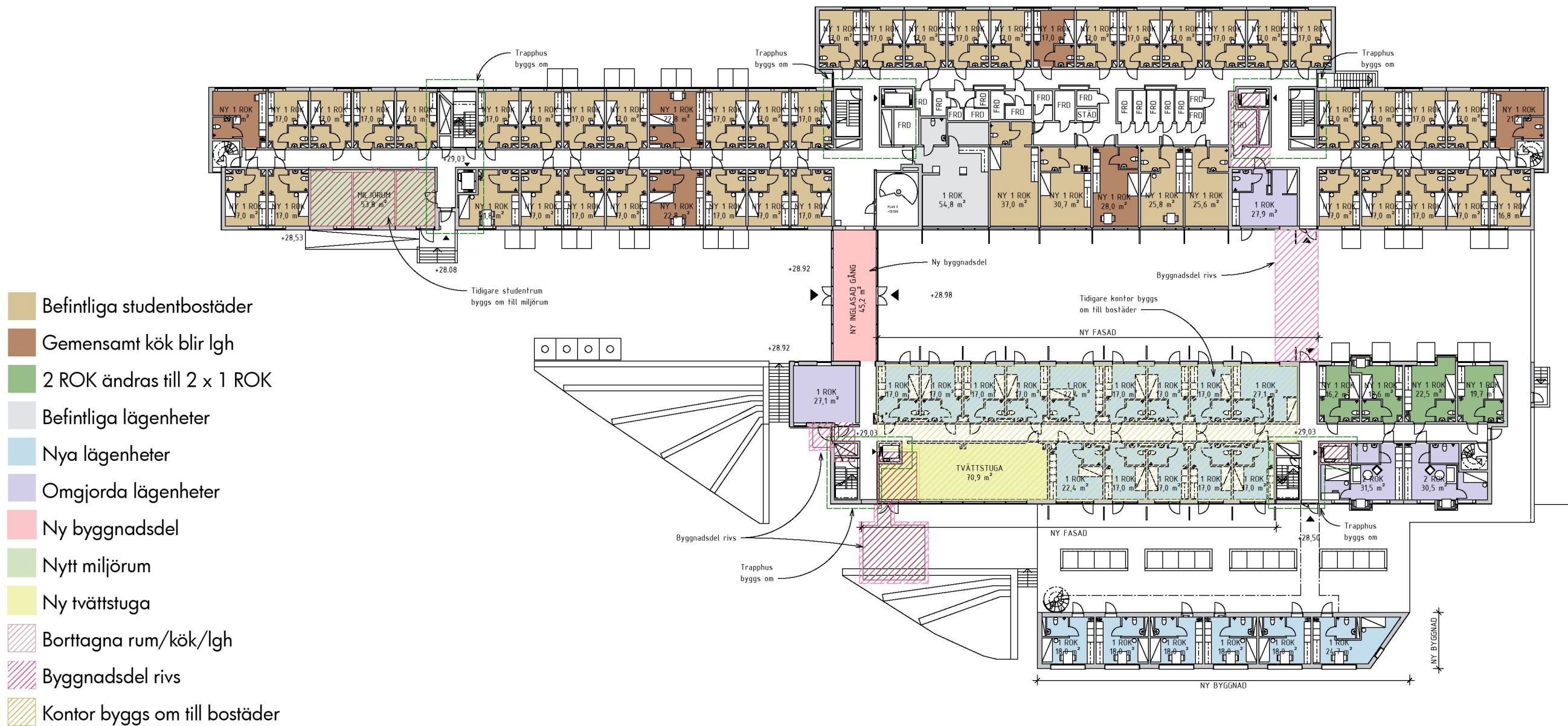
## : EKOLOGI GRUPPEN

PAJU

**sandell  
sandberg**



# PLAN 0

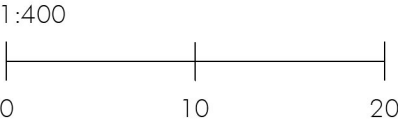
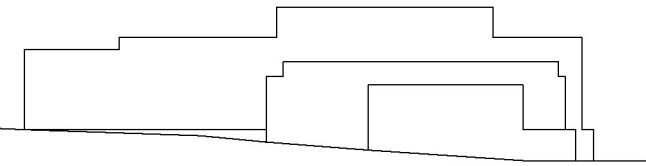




PLAN 1



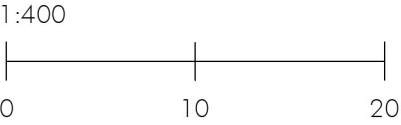
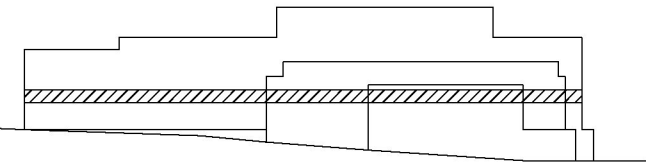
- Befintliga studentbostäder
- Gemensamt kök blir lgh
- 2 ROK ändras till 2 x 1 ROK
- Nya lägenheter
- Omgjorda lägenheter



PLAN 2



- Befintliga studentbostäder
- Gemensamt kök blir lgh
- 2 ROK ändras till 2 x 1 ROK
- Nya lägenheter
- Omgjorda lägenheter

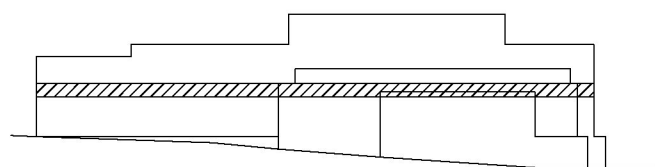




## PLAN 3



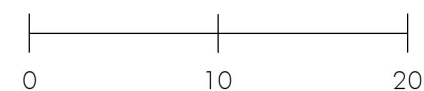
- Befintliga studentbostäder
- Gemensamt kök blir lgh
- Nya lägenheter



ROSLAGSBANAN 18 – FORUM  
2021-06-22. SIDA 11/41.



1:400



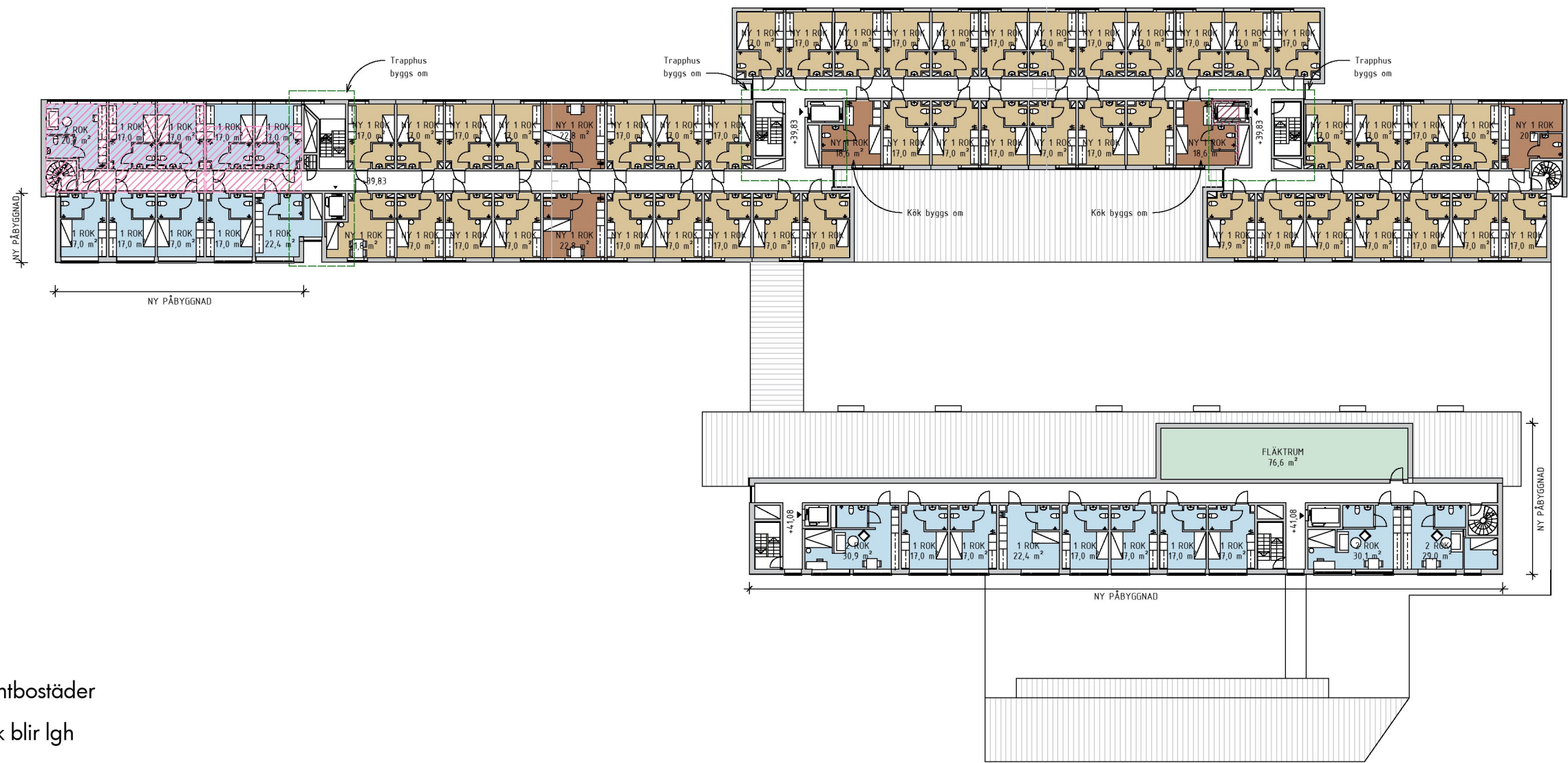
## : EKOLOGI GRUPPEN

PAJU

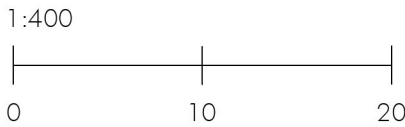
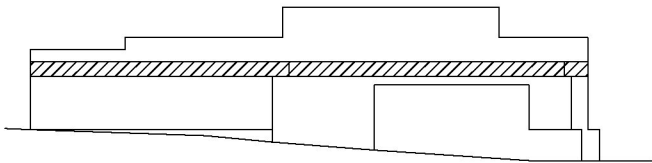
**sandell  
sandberg**



PLAN 4

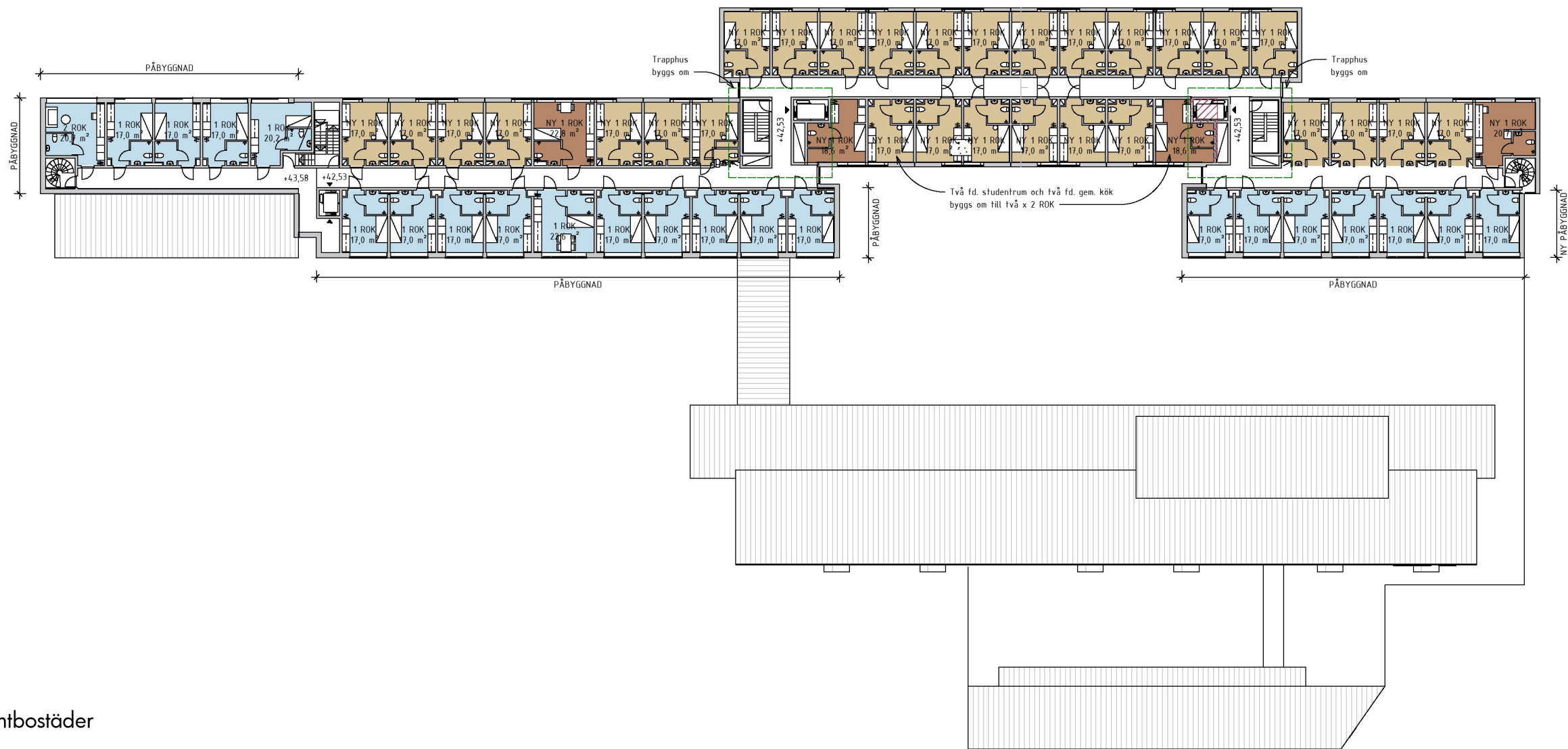


- Befintliga studentbostäder
- Gemensamt kök blir lgh
- Nya lägenheter
- Fläktrum

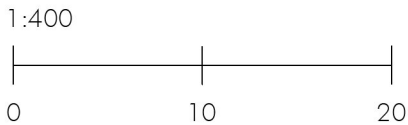
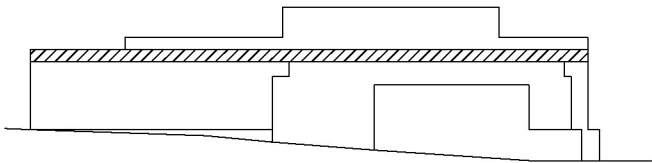




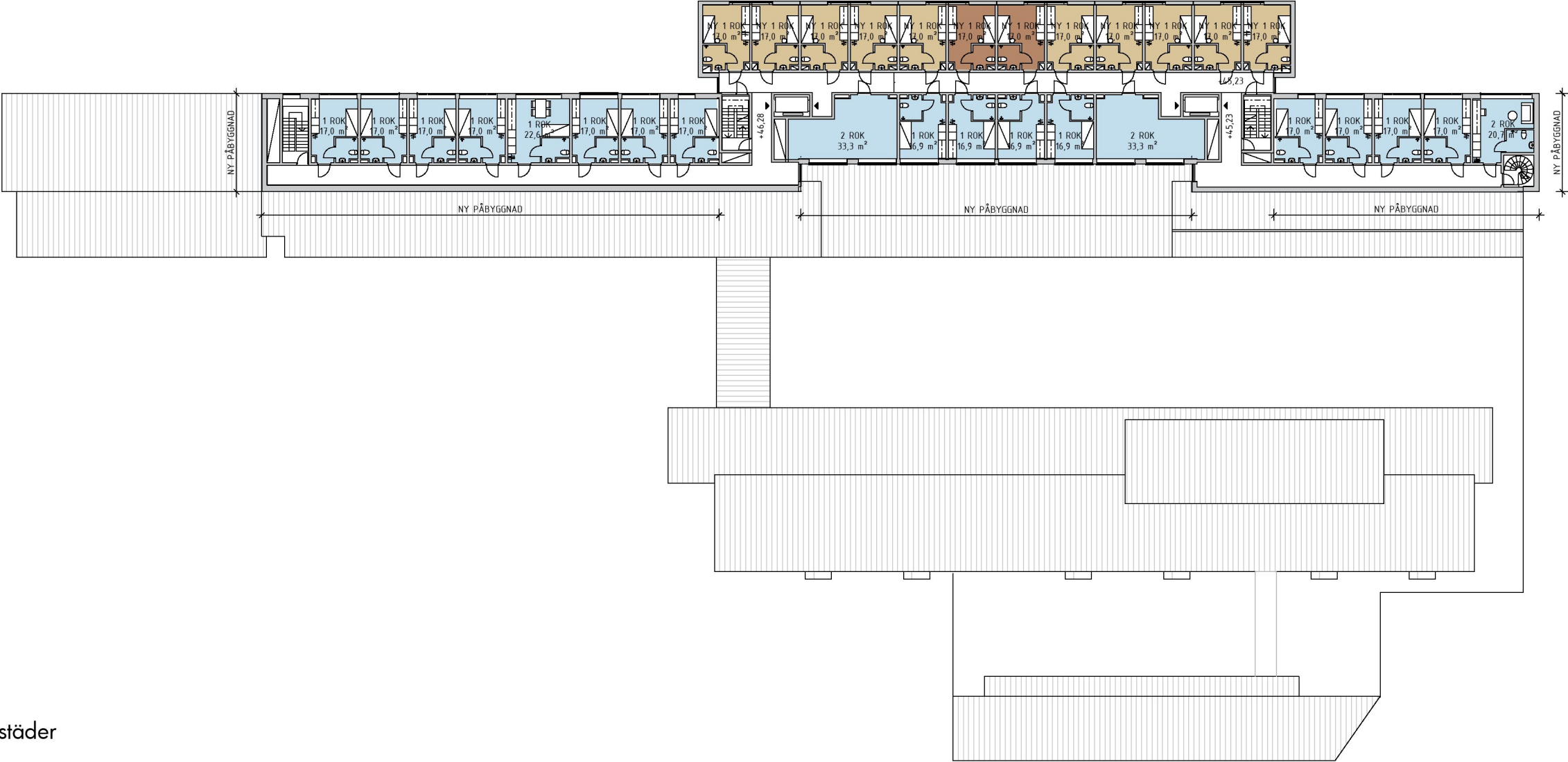
PLAN 5



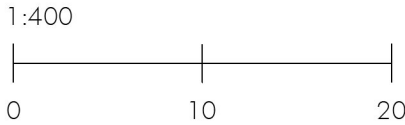
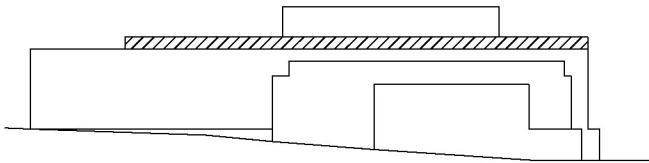
- Befintliga studentbostäder
- Gemensamt kök blir lgh
- Nya lägenheter



PLAN 6

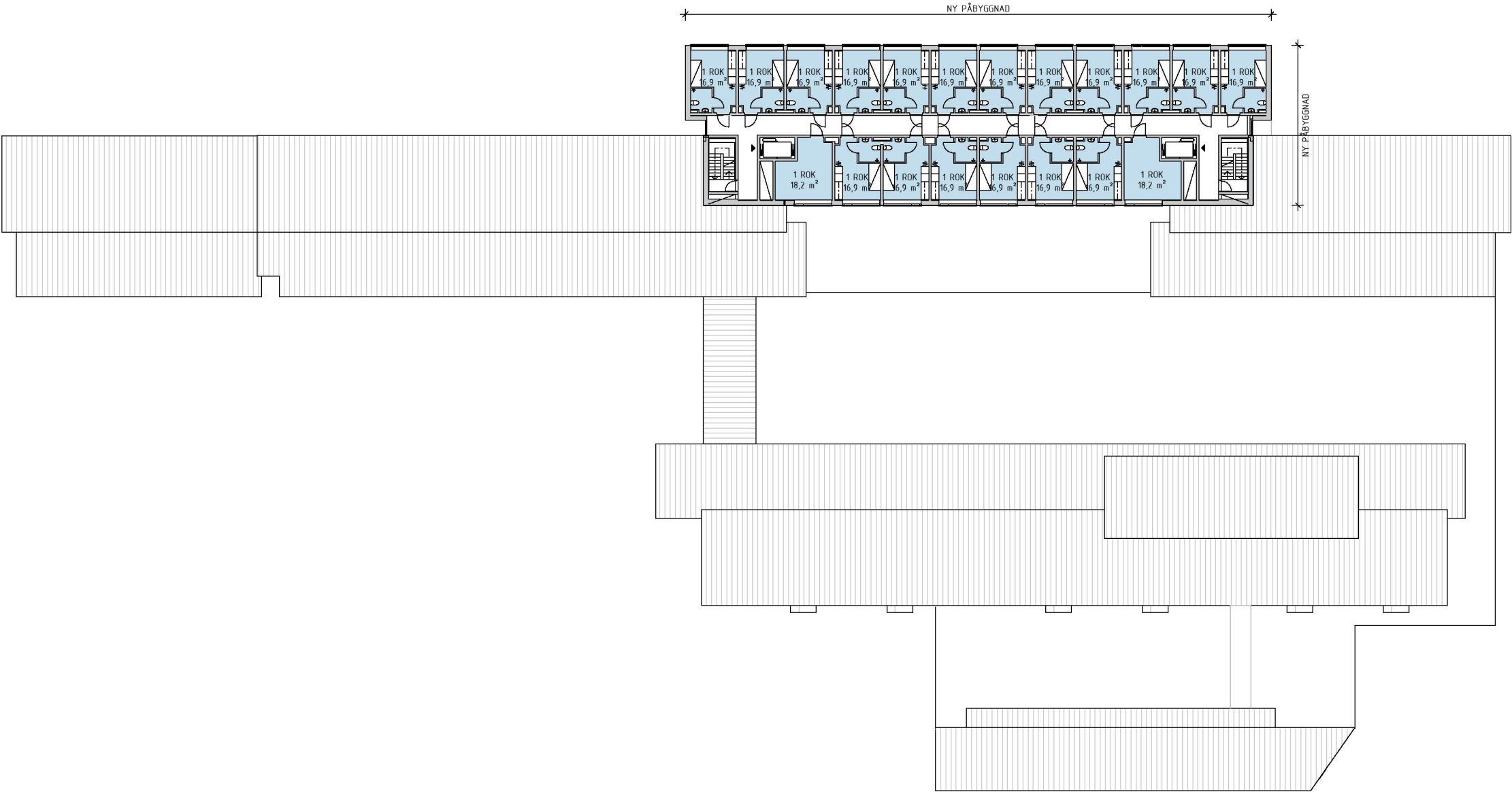


- Befintliga studentbostäder
- Gemensamt kök blir lgh
- Nya lägenheter

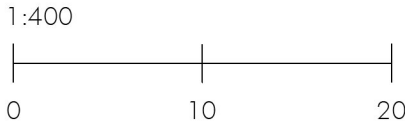
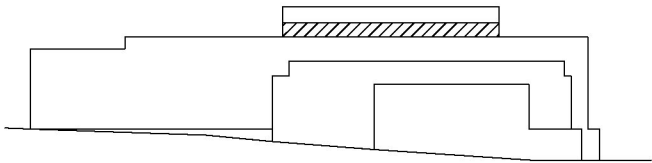




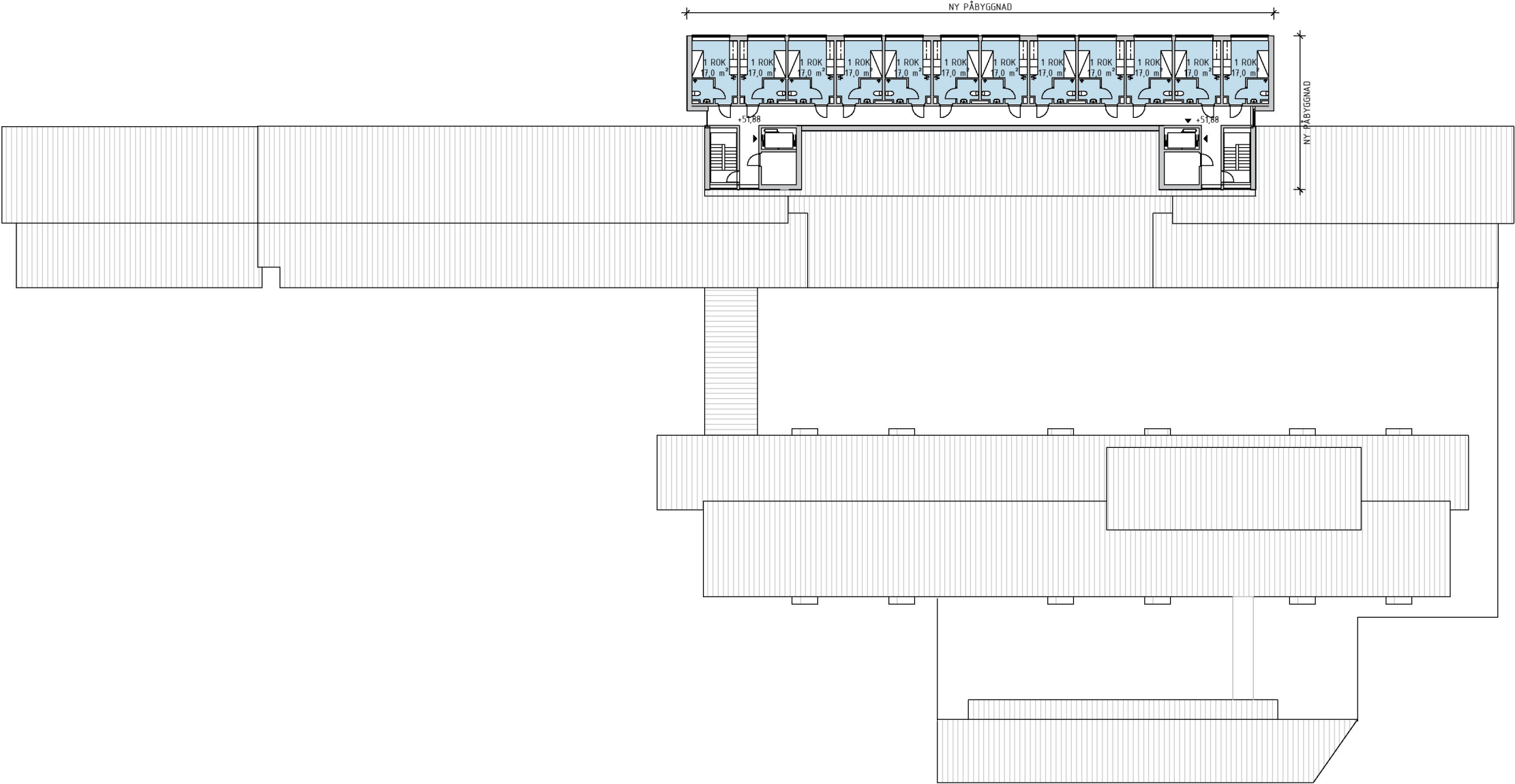
PLAN 7



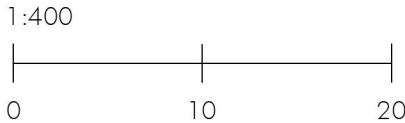
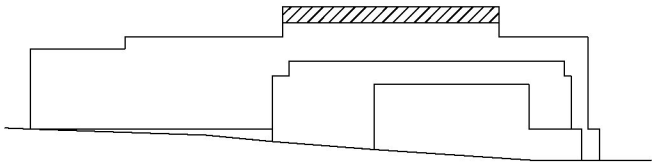
■ Nya lägenheter



PLAN 8

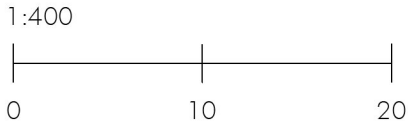
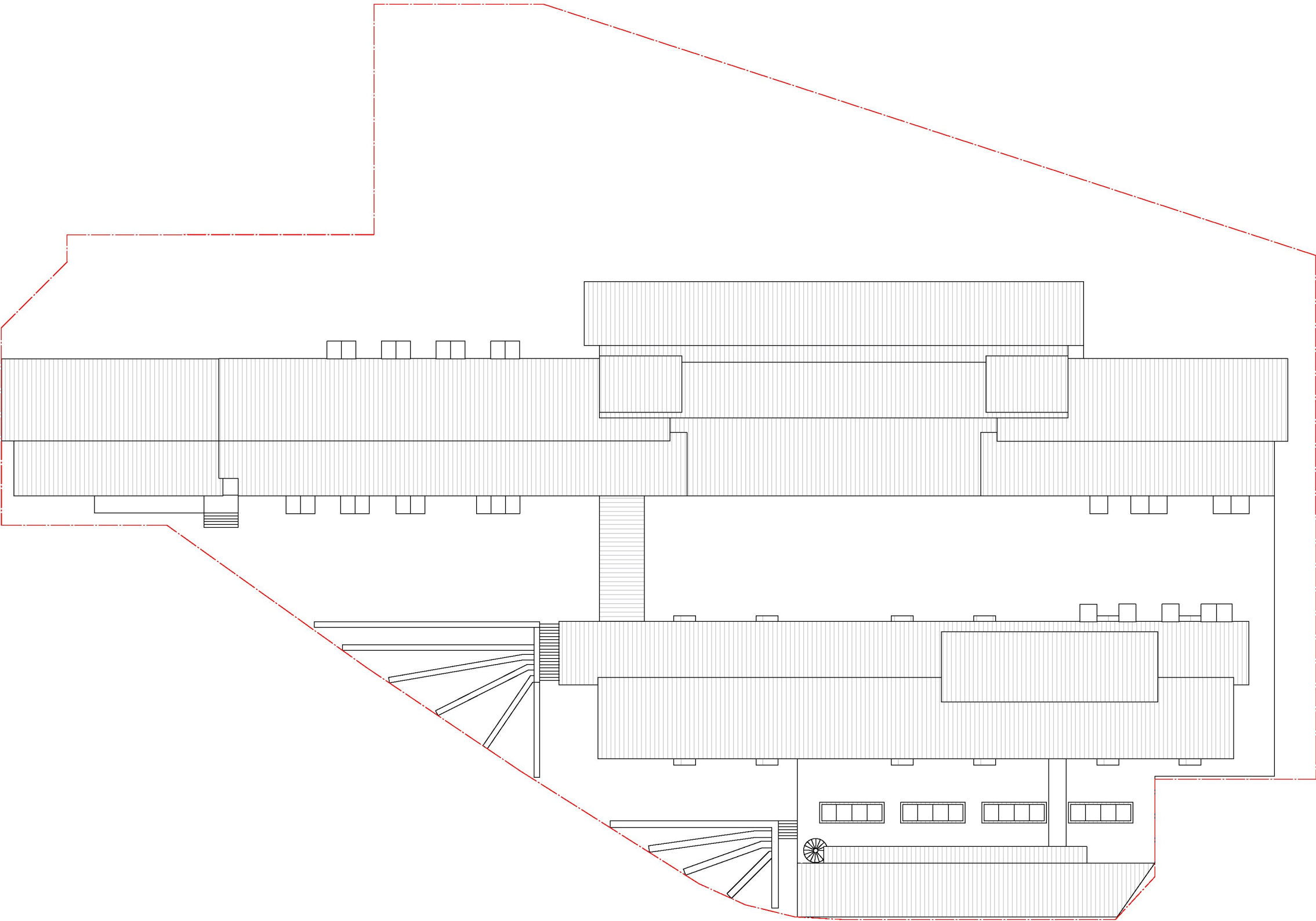


■ Nya lägenheter



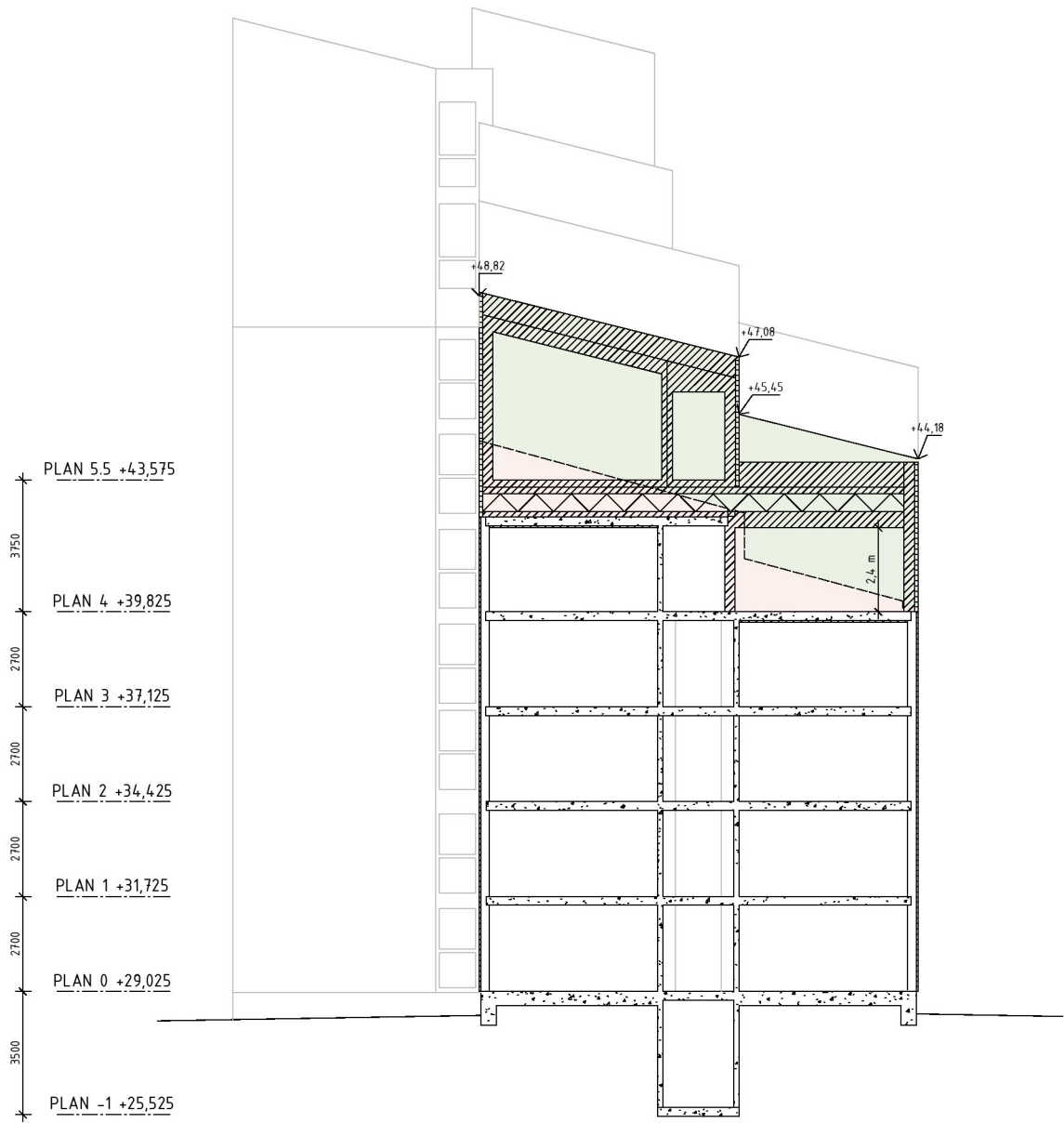
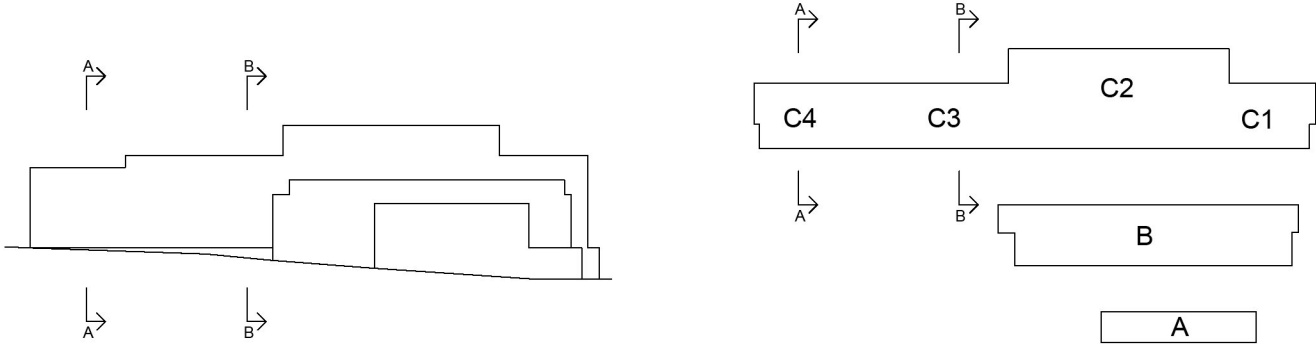


TAKPLAN

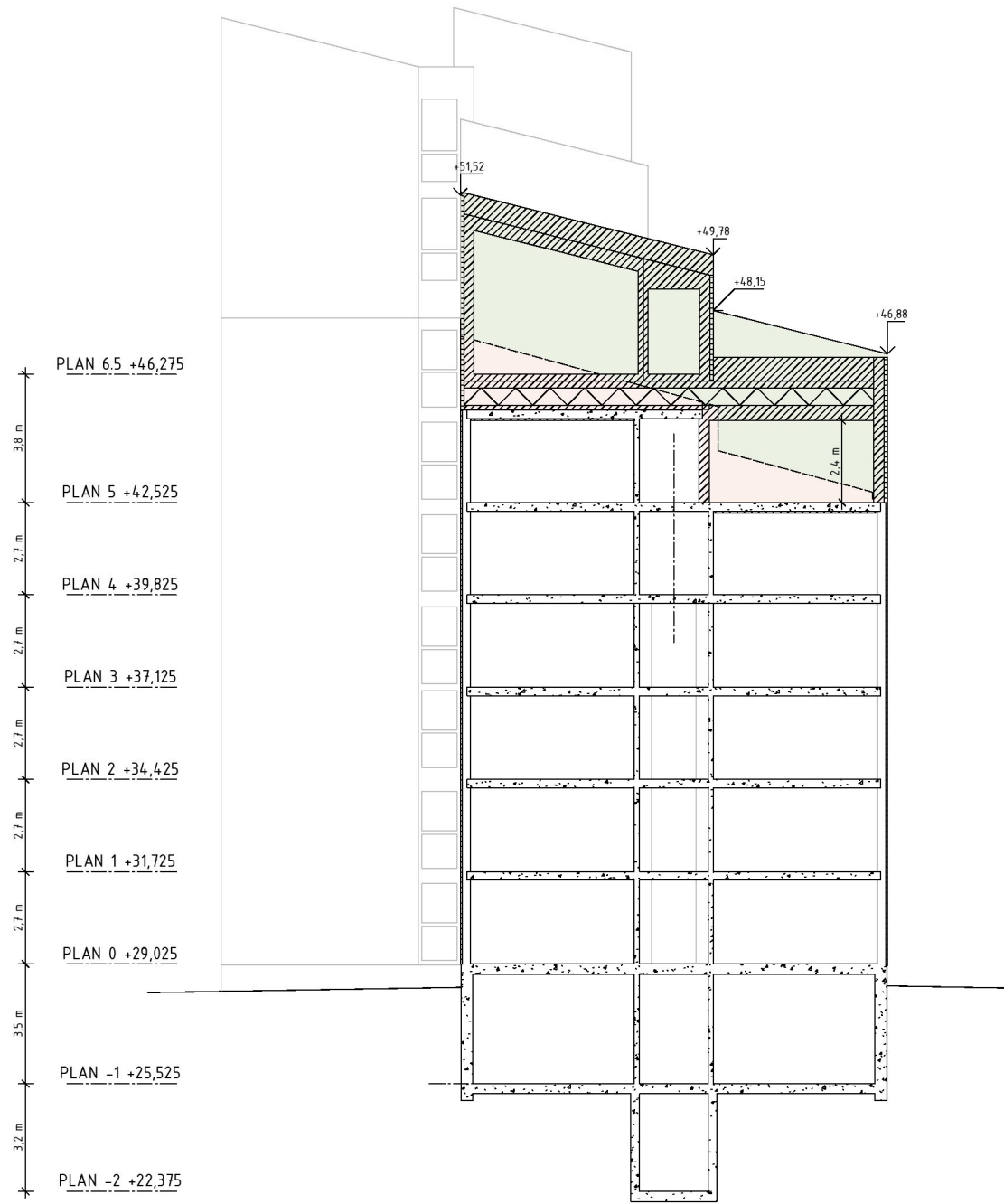


SEKTIONER

- NYBYGGNAD
- RIVS
- OMBYGGNAD



Sektion A-A

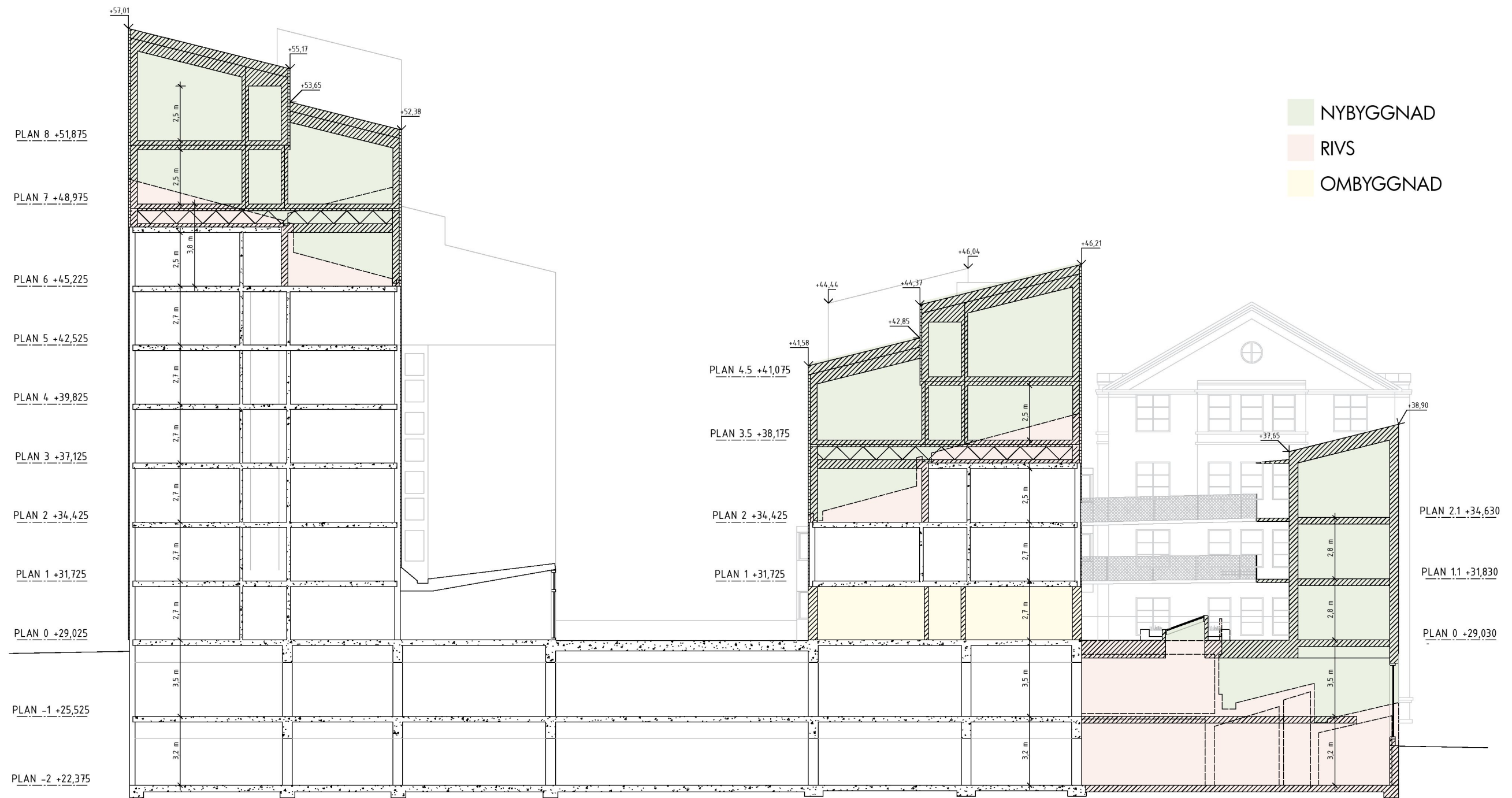
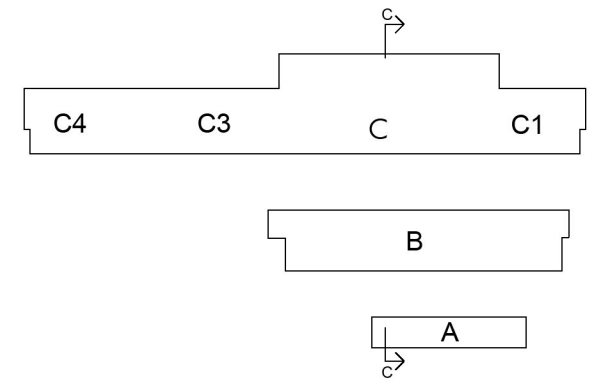
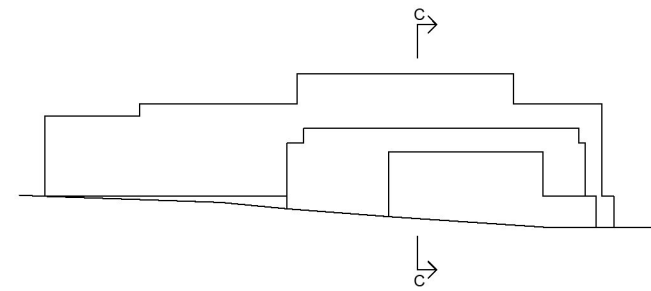


Sektion B-B





## SEKTIONER

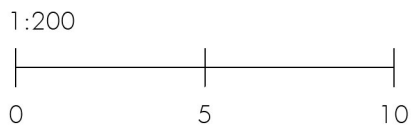
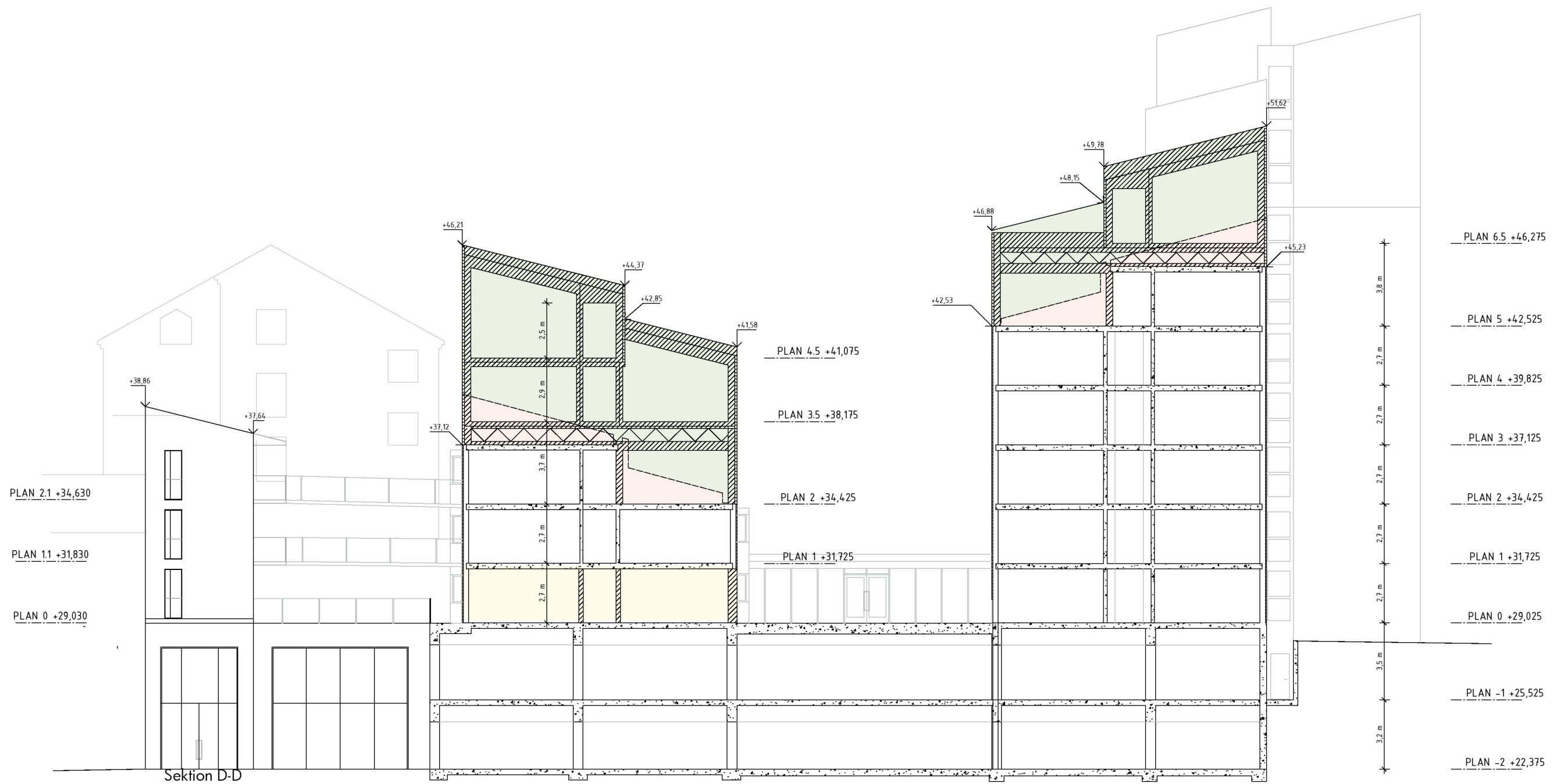
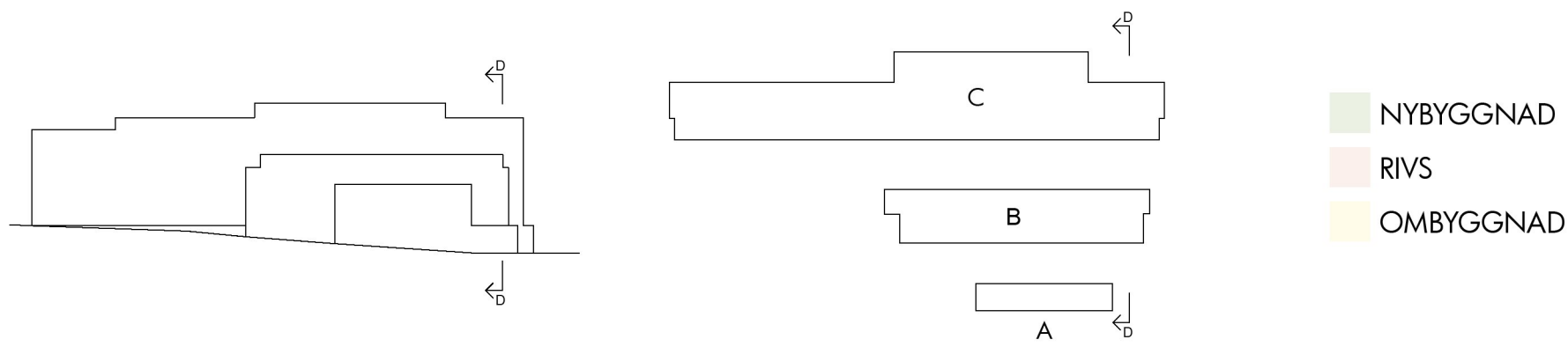


Sektion C-C

1:200



SEKTIONER

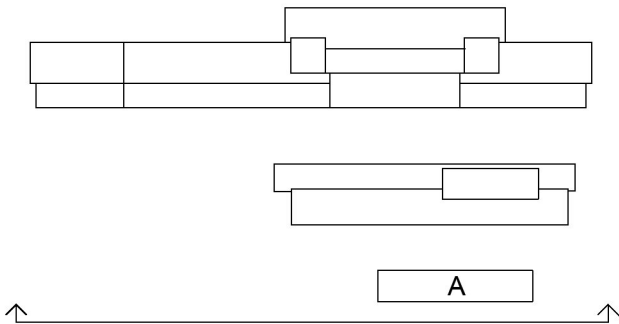




FASADER



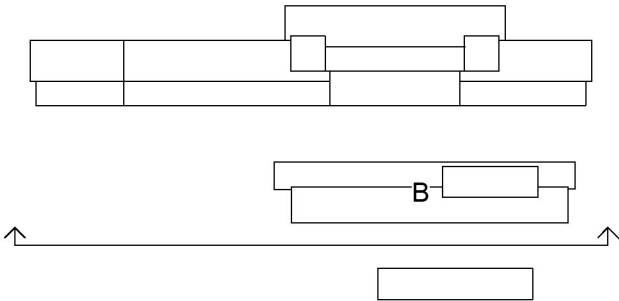
Fasad mot sydväst. Hus A.



FASADER



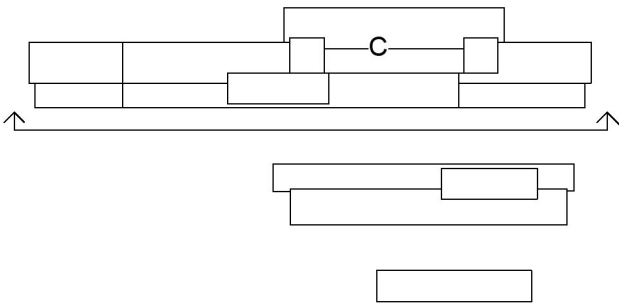
Fasad mot sydväst. Hus B.



FASADER



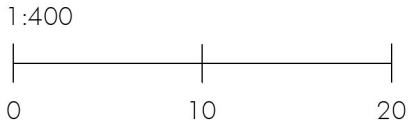
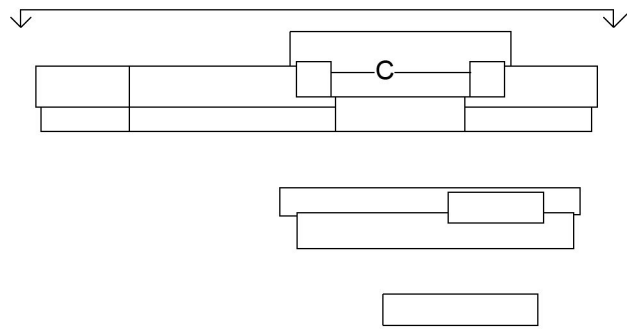
Fasad mot sydväst. Hus C.





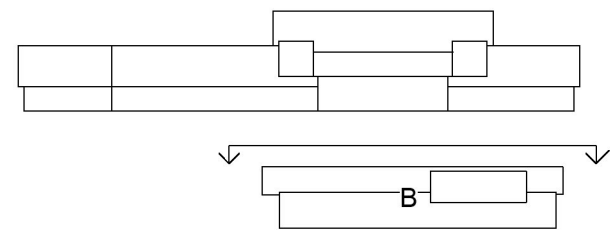


Fasad mot nordost. Hus C.

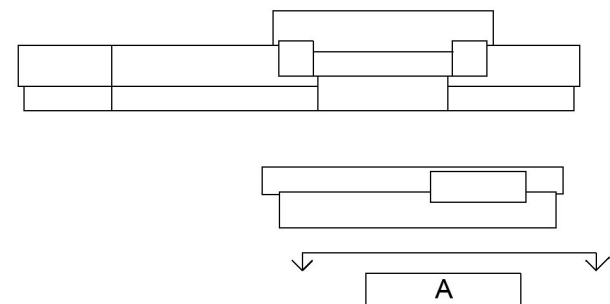




Fasad mot nordost. Hus B.



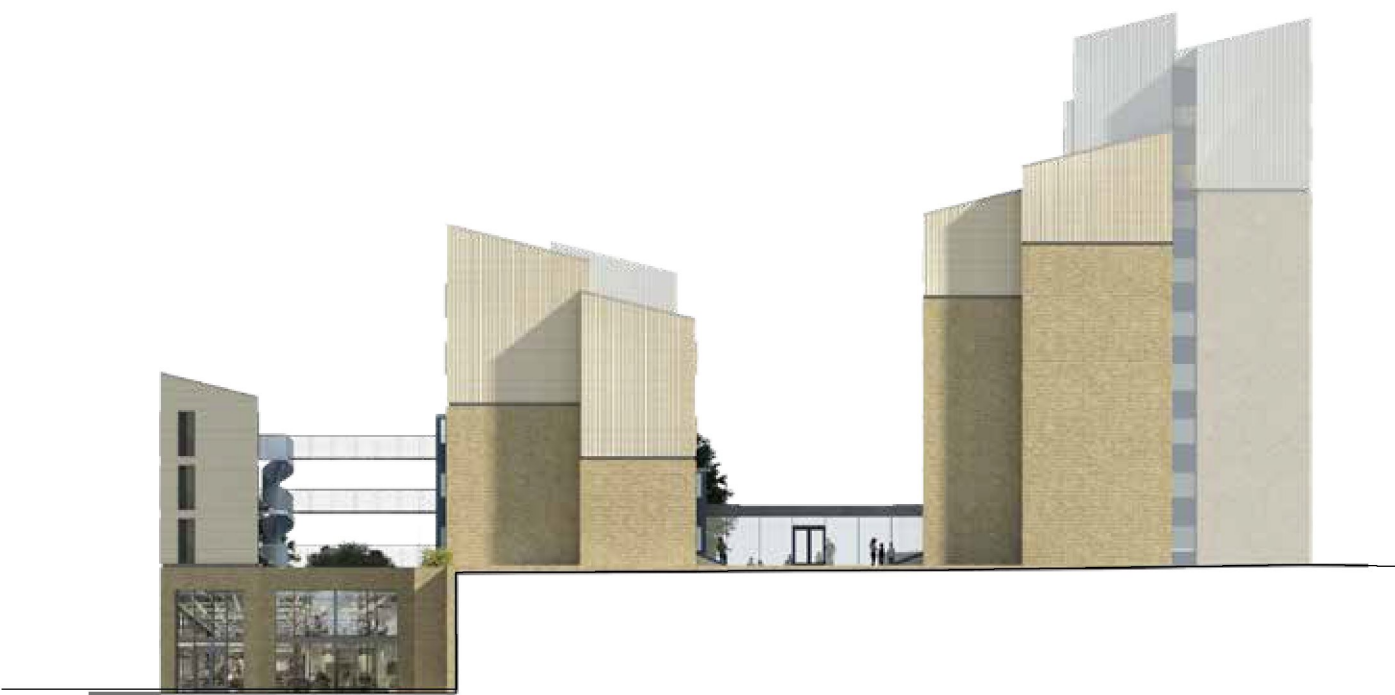
Fasad mot nordost. Hus A.



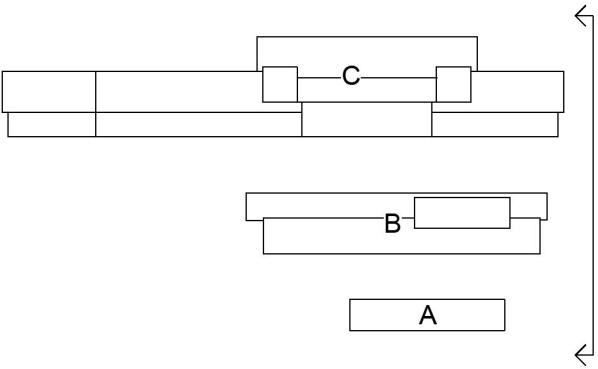
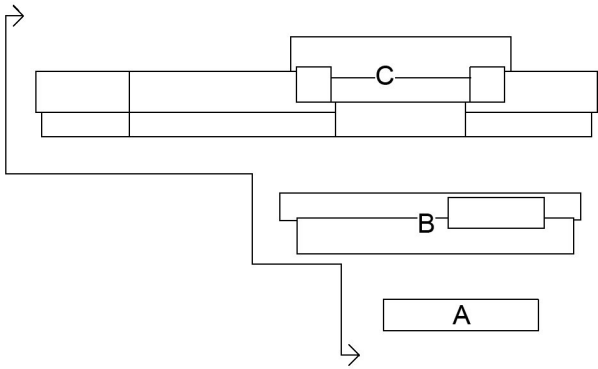
FASADER



Fasad mot nordväst. Hus C-B-A.



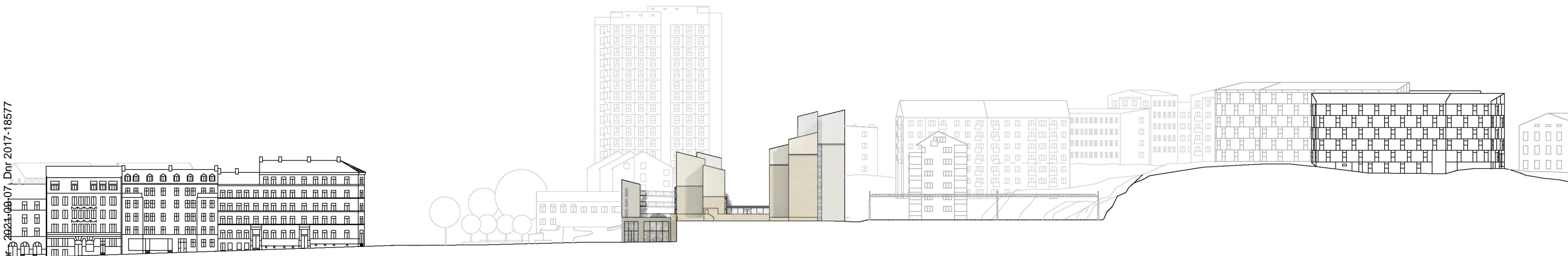
Fasad mot sydöst. Hus A-B-C.







Sektion längst med Valhallavägen



Sektion från Surbrunnsgatan över Valhallavägen till Malvinas väg



PERSPEKTIV FRÅN VALHALLAVÄGEN





PERSPEKTIV FRÅN NORDVÄST OCH KÖRSBÄRSVÄGEN





PERSPEKTIV FRÅN VÄSTER





PERSPEKTIV FRÅN ÖSTER





## PERSPEKTIV ÖVER INRE GÅRD





## PERSPEKTIV ÖVER FRÄMRE GÅRD





PERSPEKTIV ENTRÉ, CAFE & CO-WORKING SPACE





## PERSPEKTIV FRÅN VANADISLUNDEN





## PERSPEKTIV FRÅN OBSERVATORIELUNDEN





## FÅGELPERSPEKTIV FRÅN VÄST





## FÅGELPERSPEKTIV FRÅN VÄST





# FASADUTSNITT



Fasadkeramik i varmgul ton

Fönsterkarm i mörkgrå ton

Befintligt gult tegel

Fasadutsnitt mot nordost. Hus C.



## PERSPEKTIV FRÅN GÅNGBRO ÖVER ROSLAGSBANAN





PERSPEKTIV FRÅN VALHALLAVÄGEN

