

KABELVERKET DP3

SAMMANSTÄLLNING AV MATERIAL TILL SAMRÅD

AIX ARKITEKTER

2016.04.13

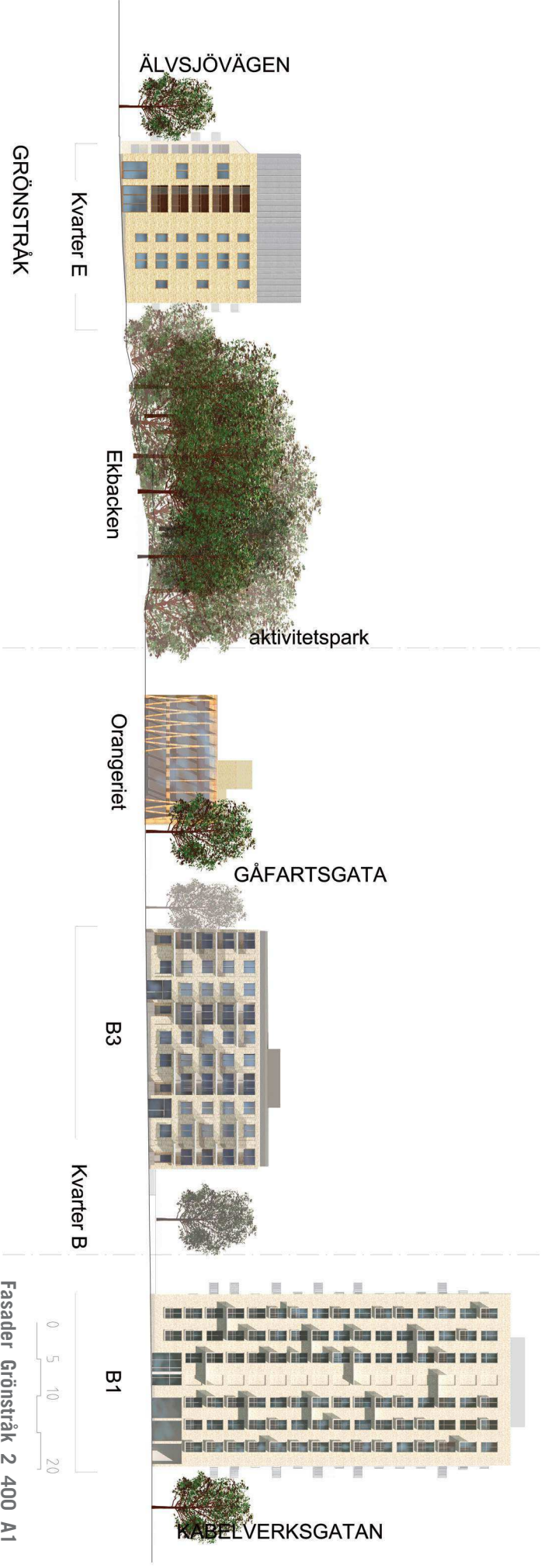


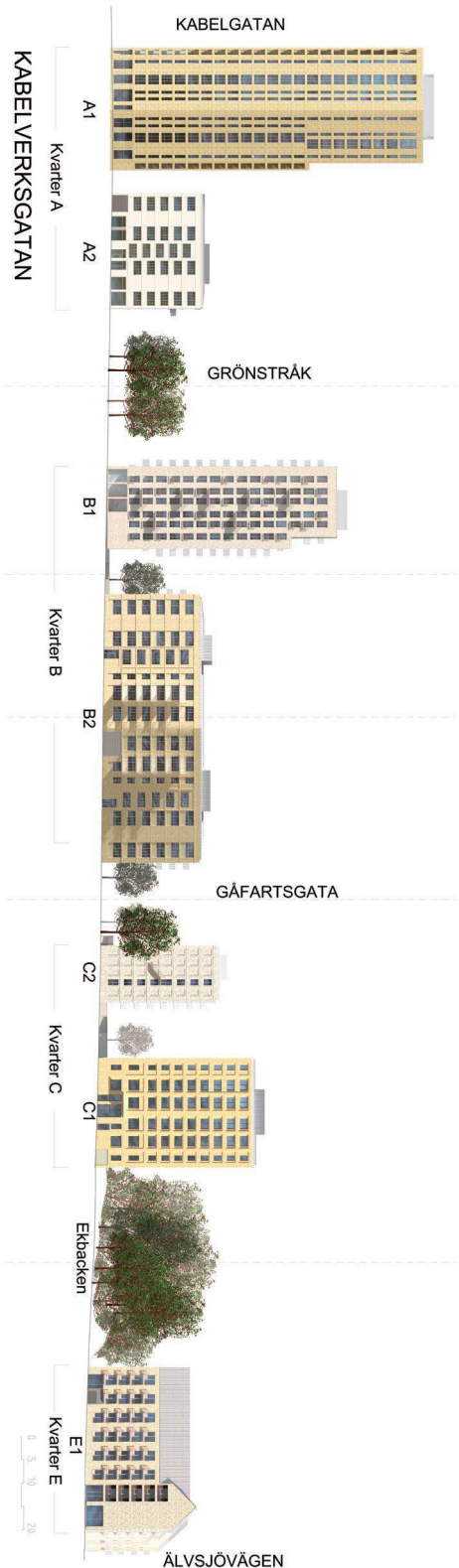




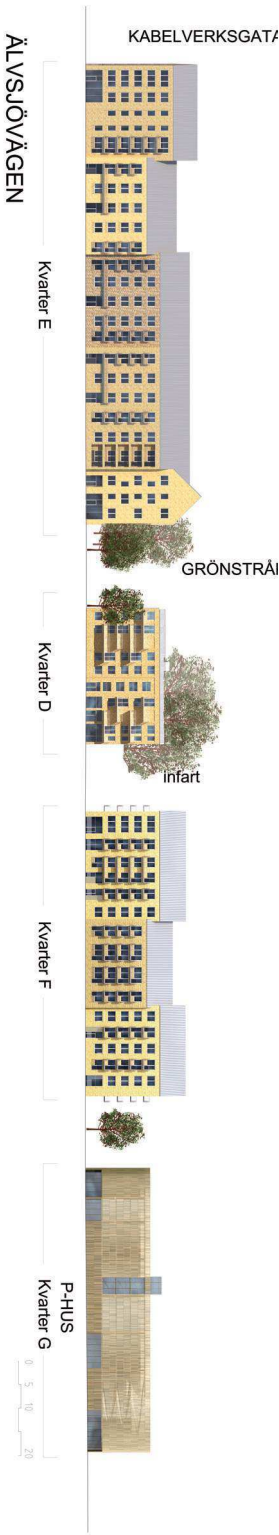


GRÖNSTRÅK



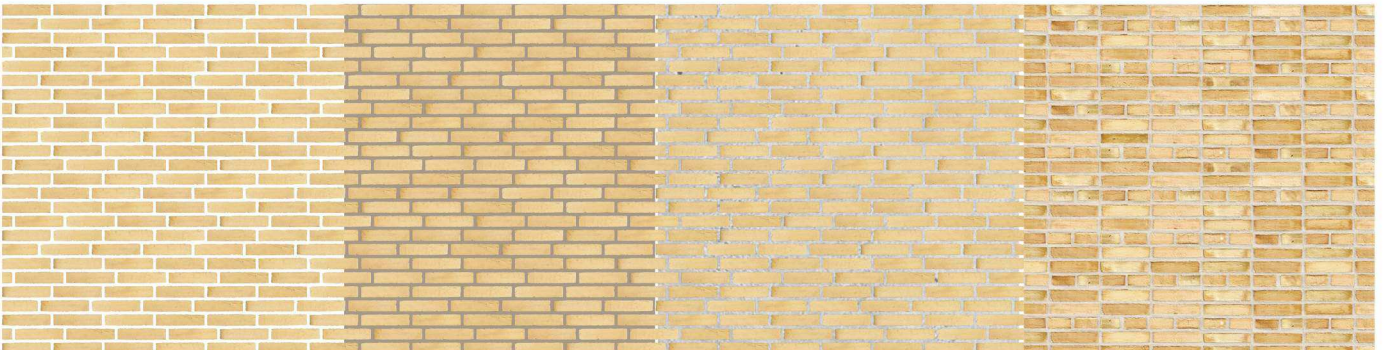
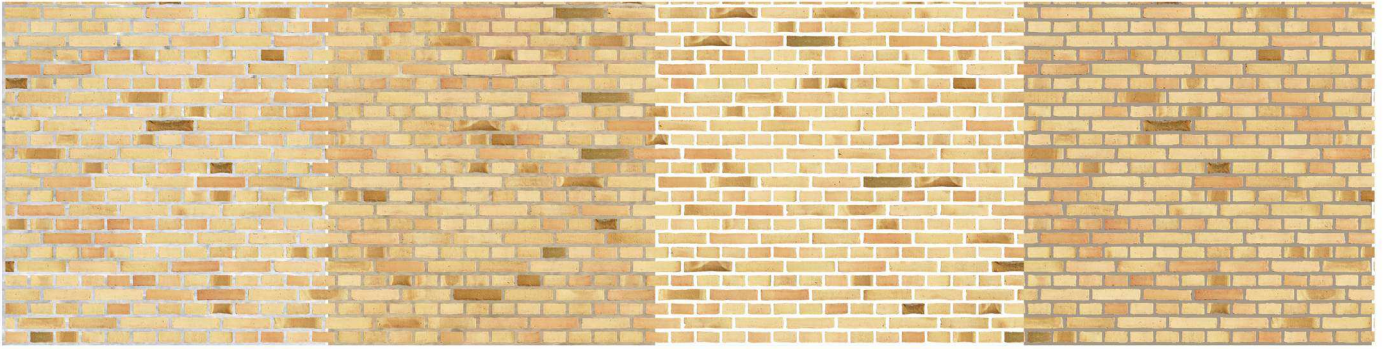


Fasader Kabelverksgatan_400_A1
Datum: 2016-03-01



Fasader Älvsjövägen_400_A1
Datum: 2016-03-01

FASADMATERIAL



Gula och gyllene tegeltyper med olika brukfärger och olika förband



Ljusa tegelsorter med olika brukfärger och olika förband,

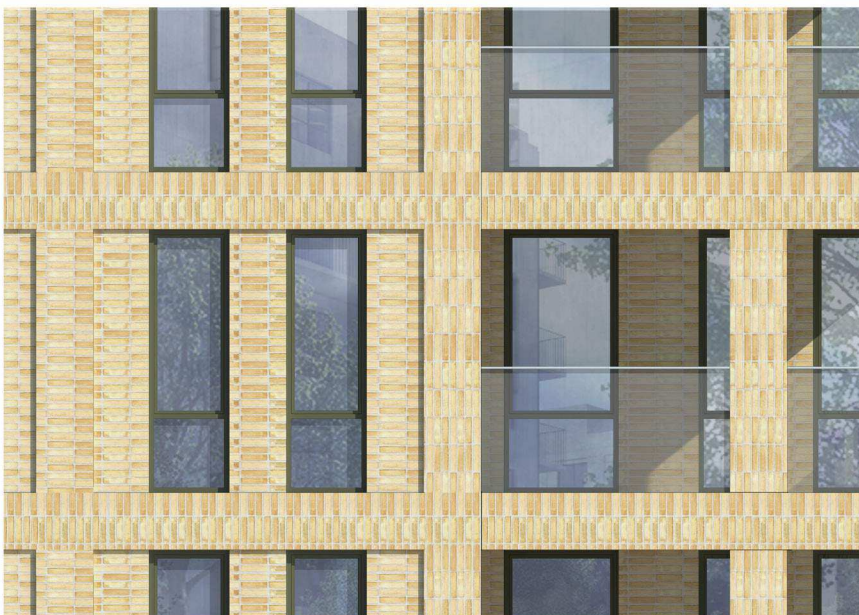
Tegelstavar

Travertin och sandsten
matrisgjuten infärgad betong

Trä

Betongytor

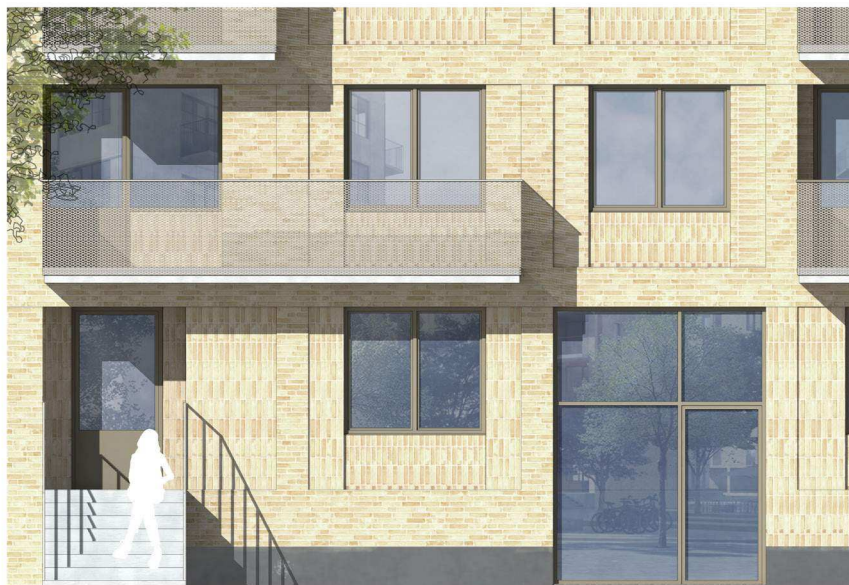
FASADUTSNITT, MURNING, DETALJER, RELIEFER, BALKONGER



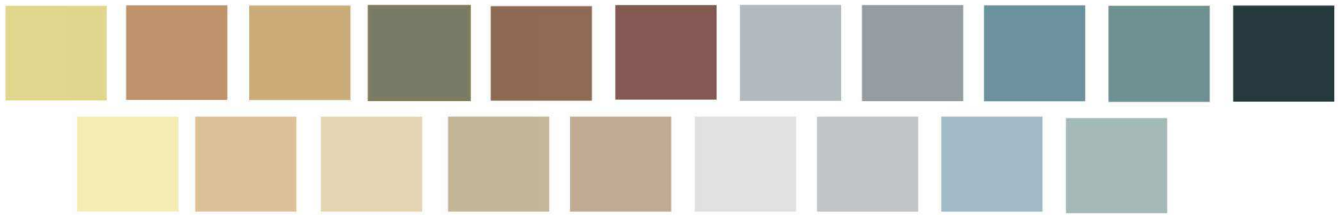
FASADUTSNITT, MURNING, DETALJER, RELIEFER



BOTTENVÅNING OCH TRAPPOR



DETALJER, PARTIER FÖNSTER



FÄRGSKALA



TRÄ



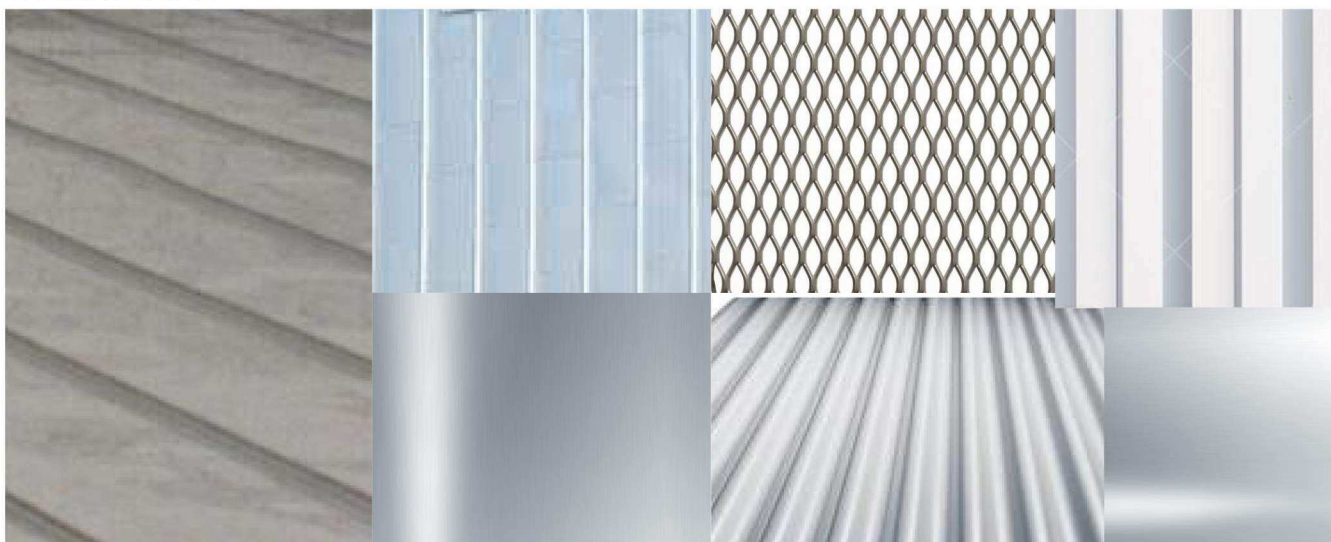
METALL

SOCKELMATERIAL

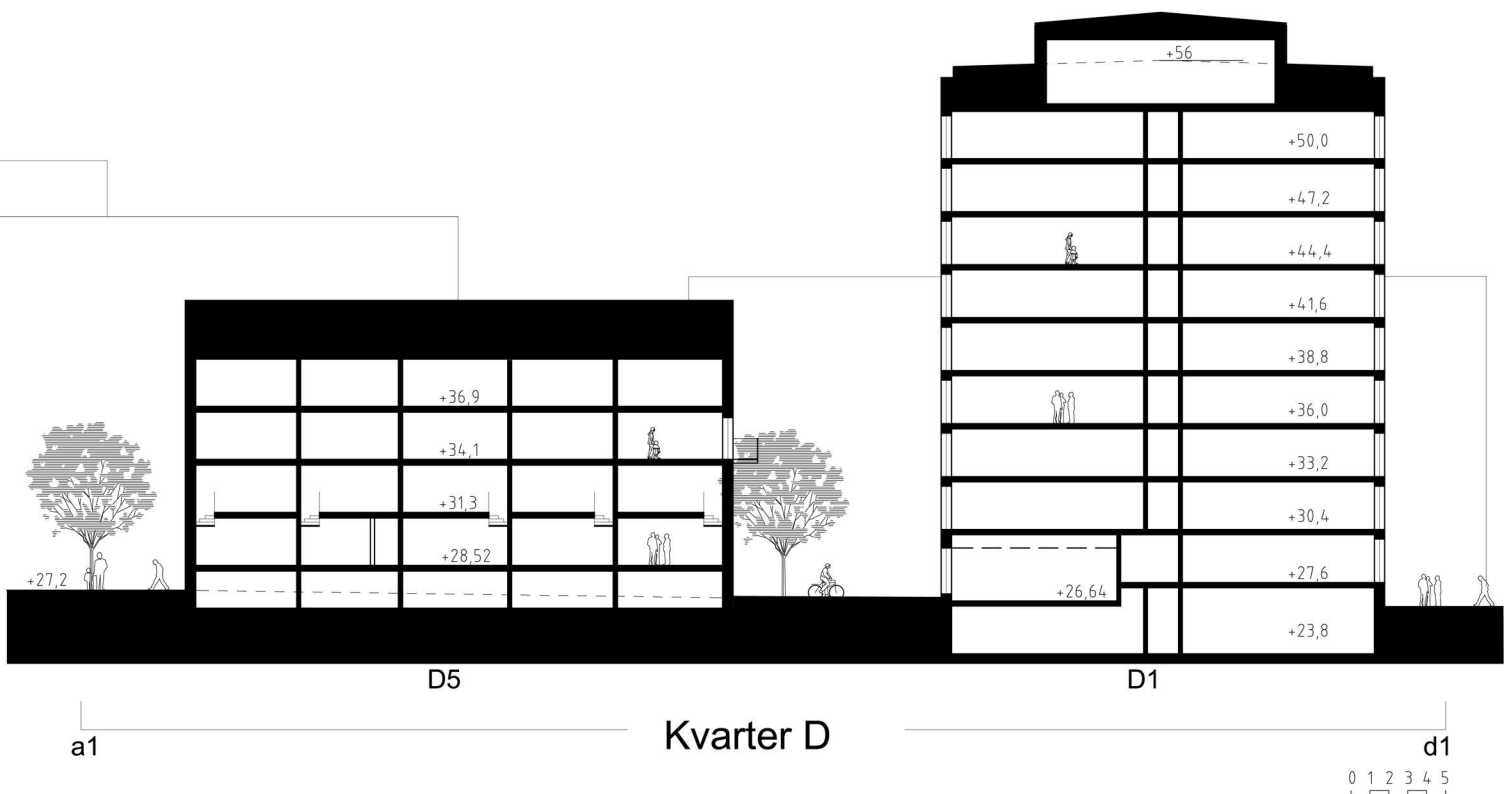
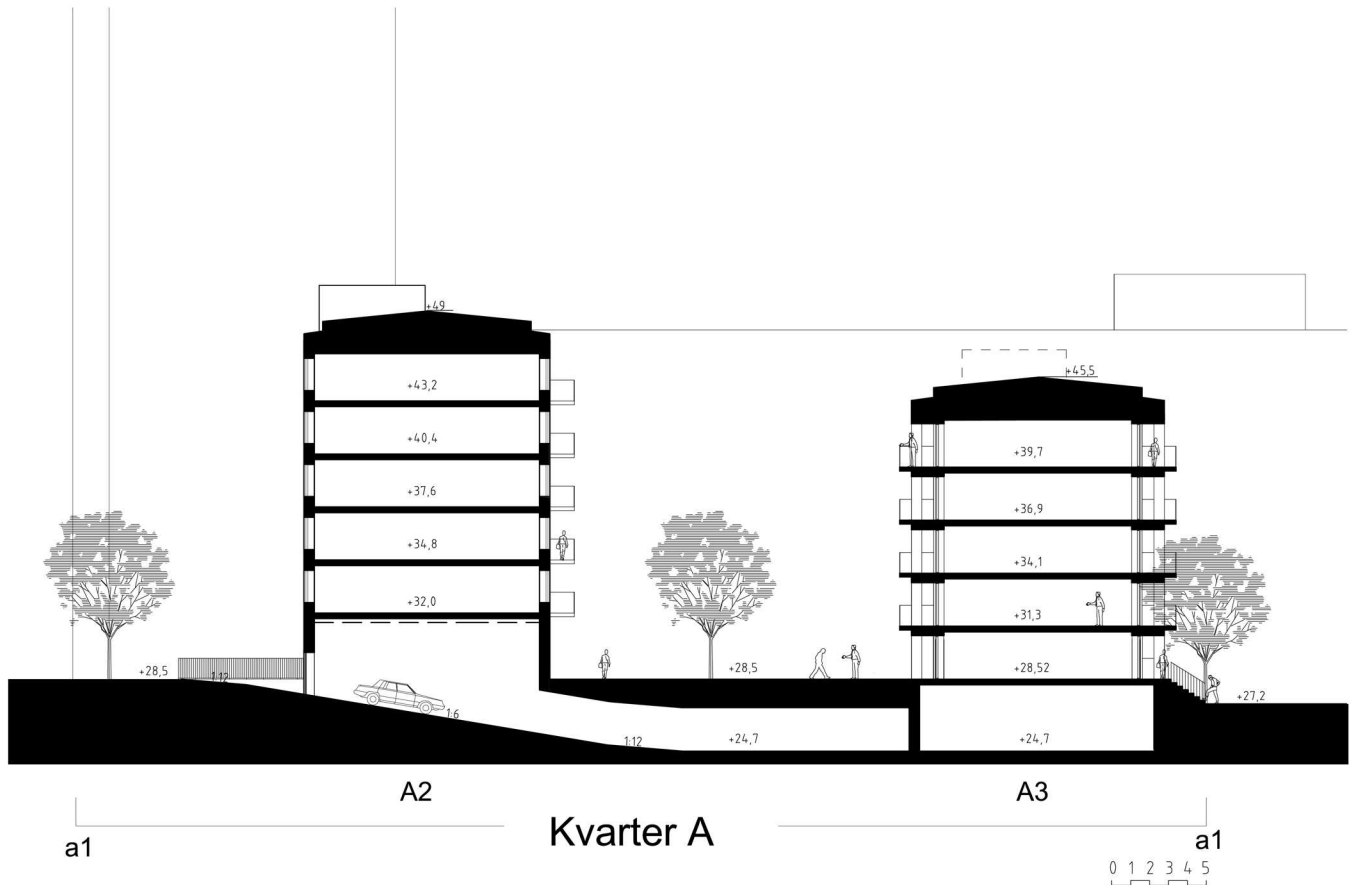


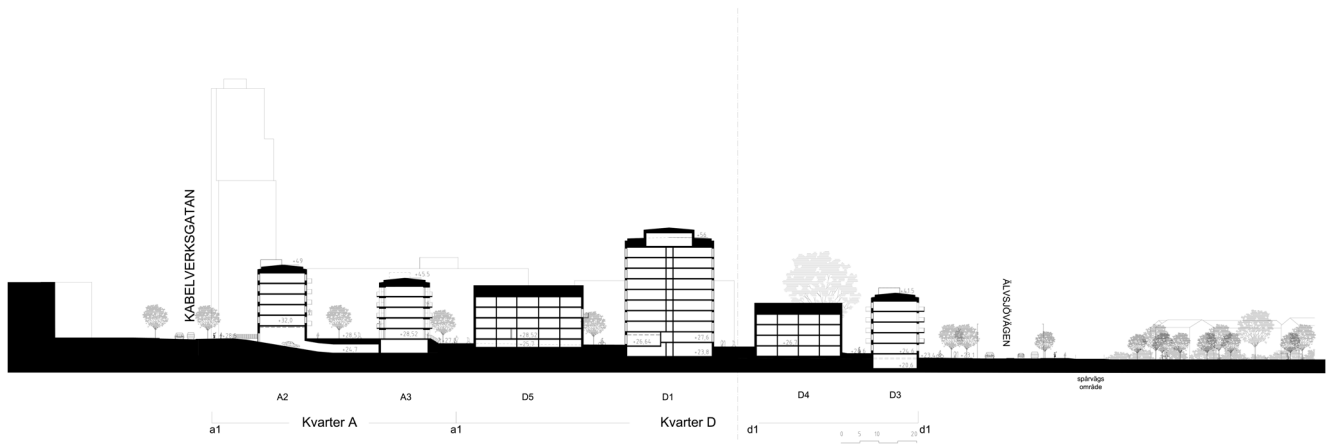
Betong
Ljus natursten

TAKMATERIAL

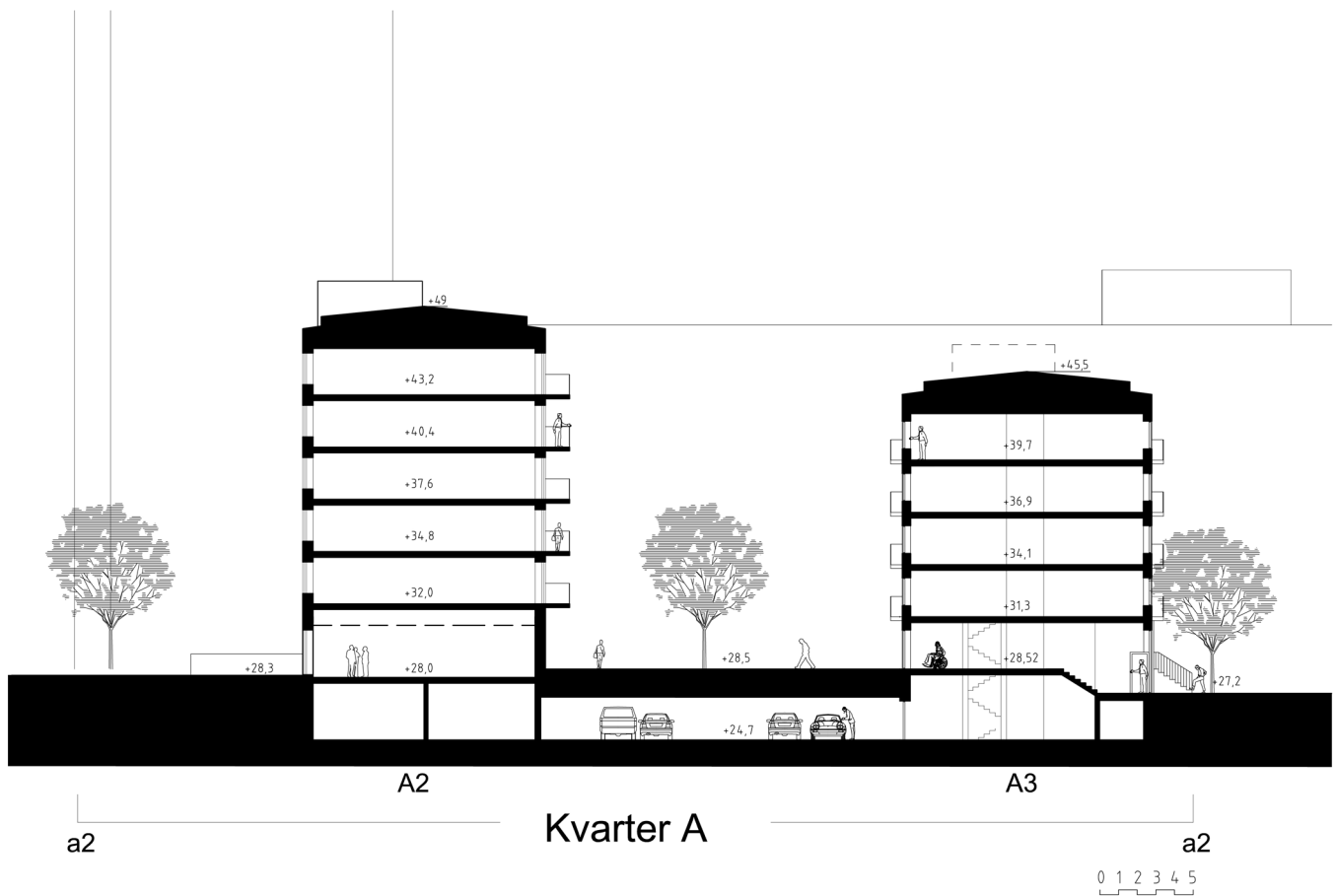


Ljusa plåttak och fläktrum
Aluzink

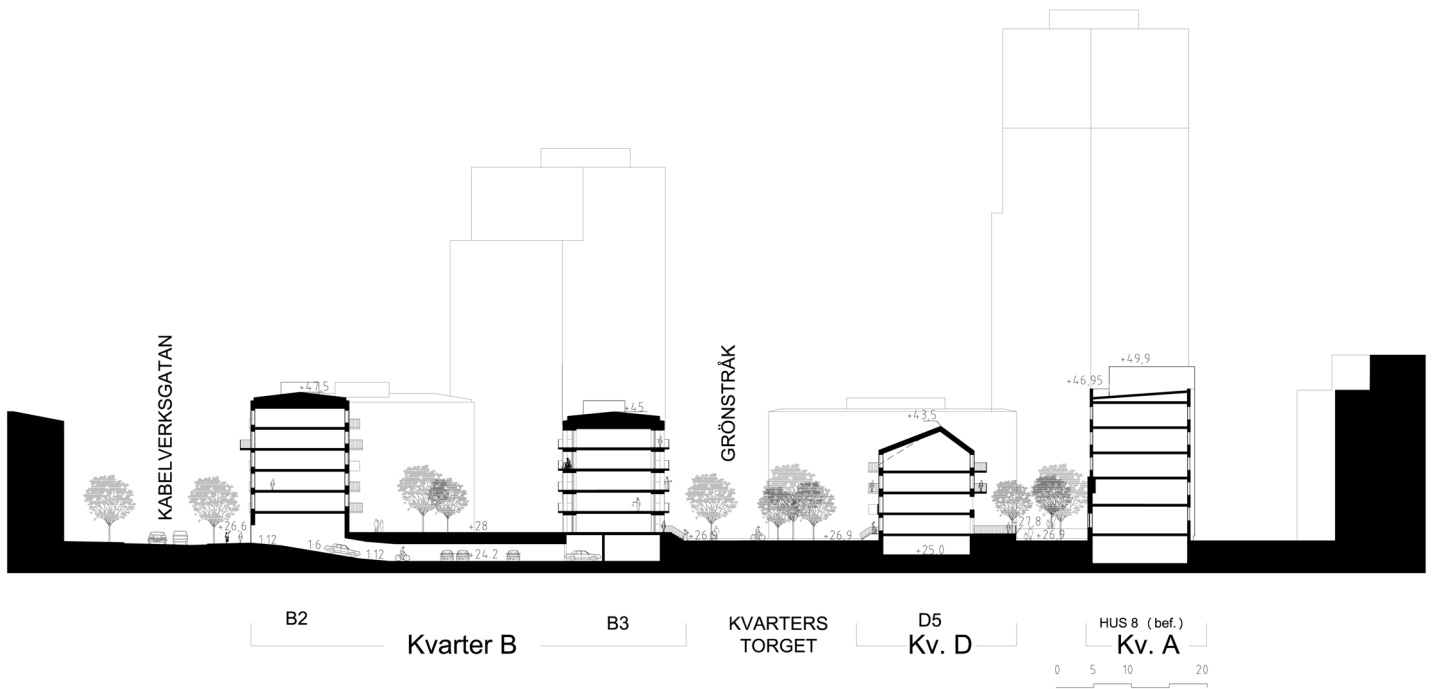




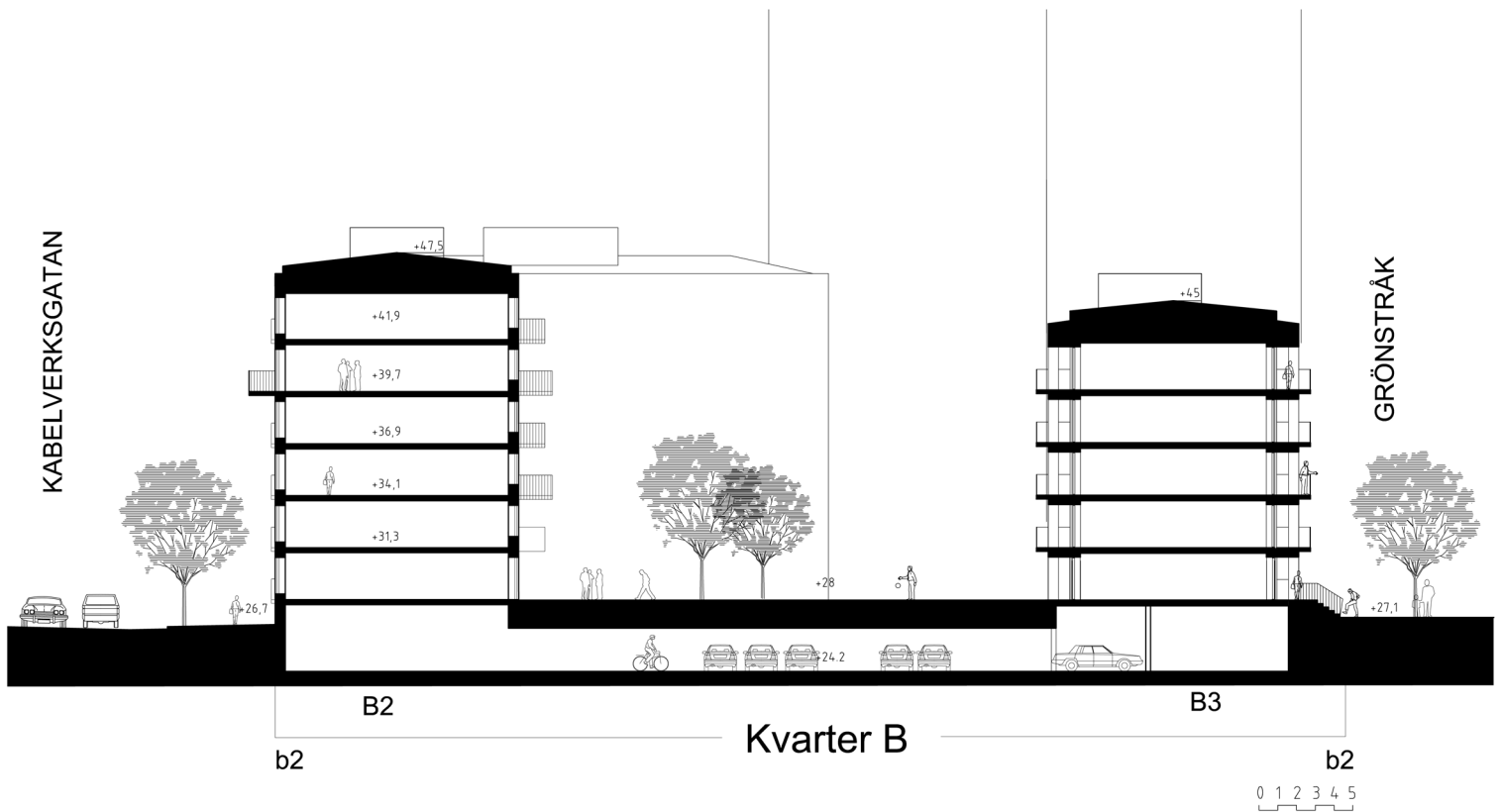
Sektion a1-d1_500_A3
Datum: 2016-04-01



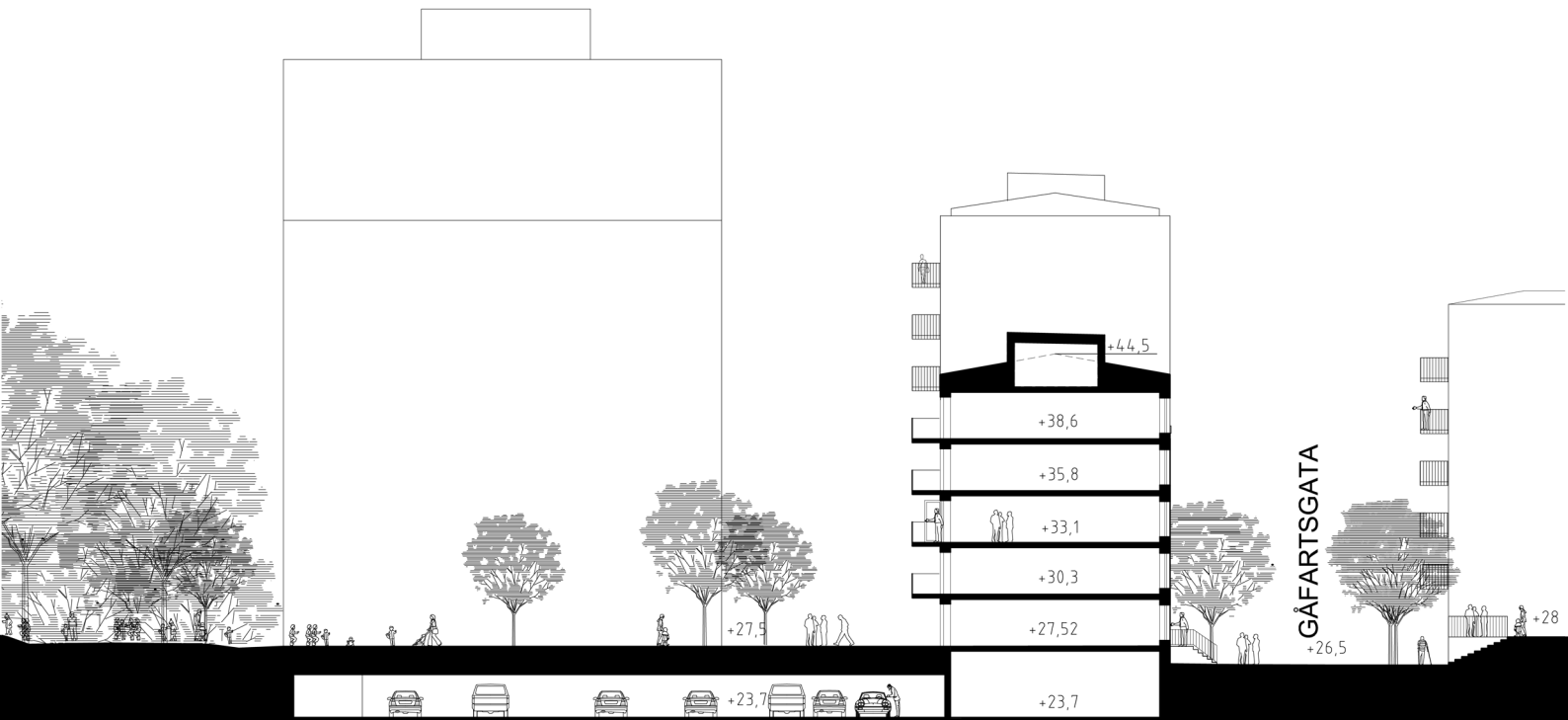
Sektion a2_200_A3
Datum: 2016-03-31



Sektion b1-a3 500_A3
Datum: 2016-03-31



Sektion b2 200_A3
Datum: 2016-03-31



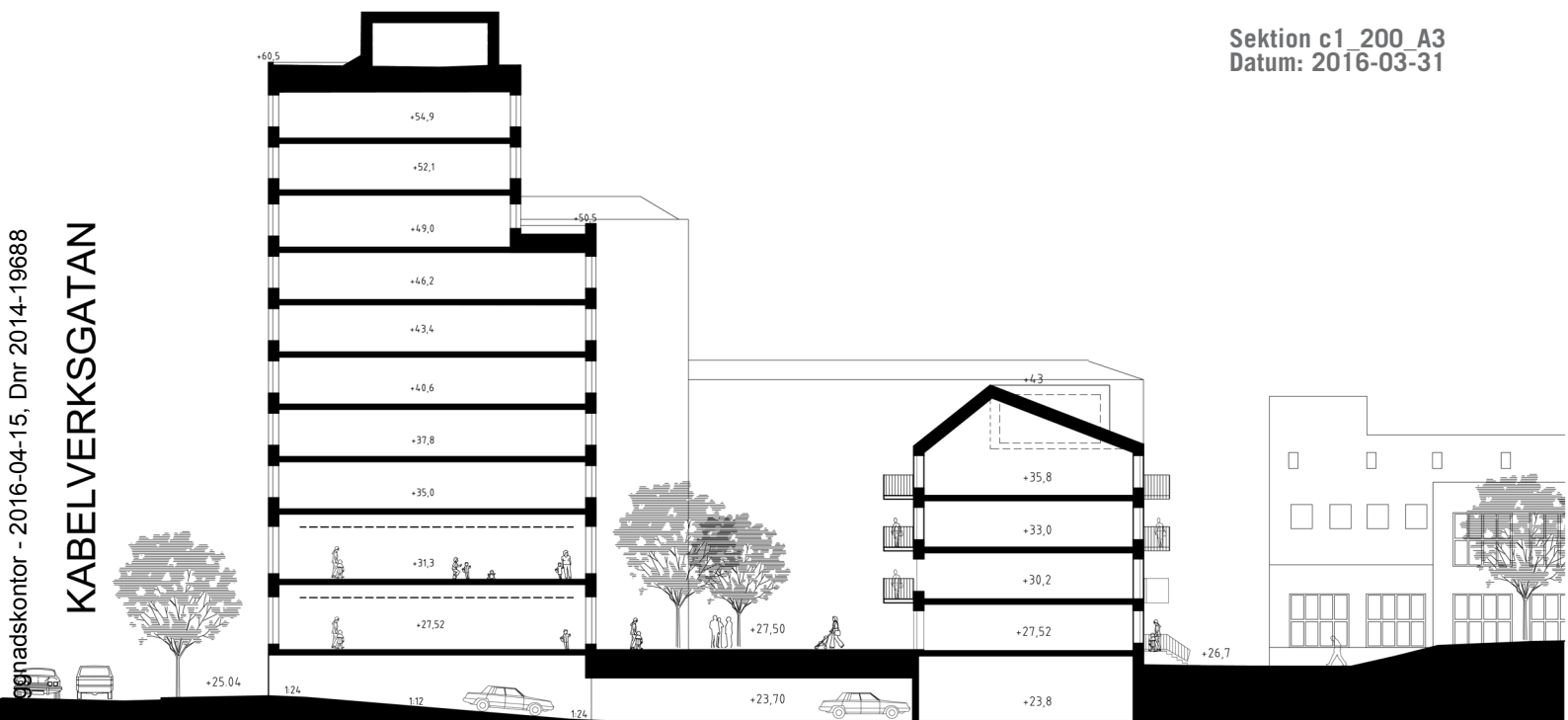
Förskolegård

c1 Kvarter C c1

Kv B

0 1 2 3 4 5

Sektion c1_200_A3
Datum: 2016-03-31



ggnadskontor - 2016-04-15, Dnr 2014-19688

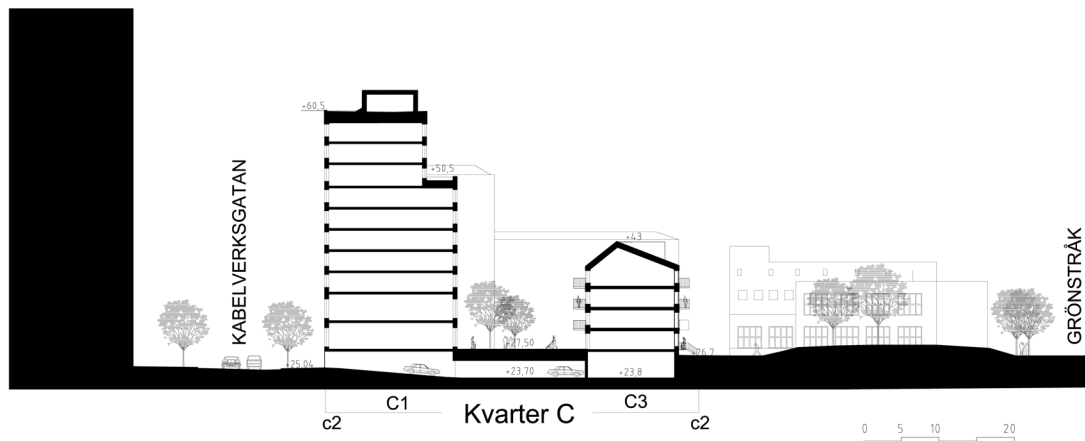
KABELVERKSGATAN

c2 C1 Kvarter C C3 c2

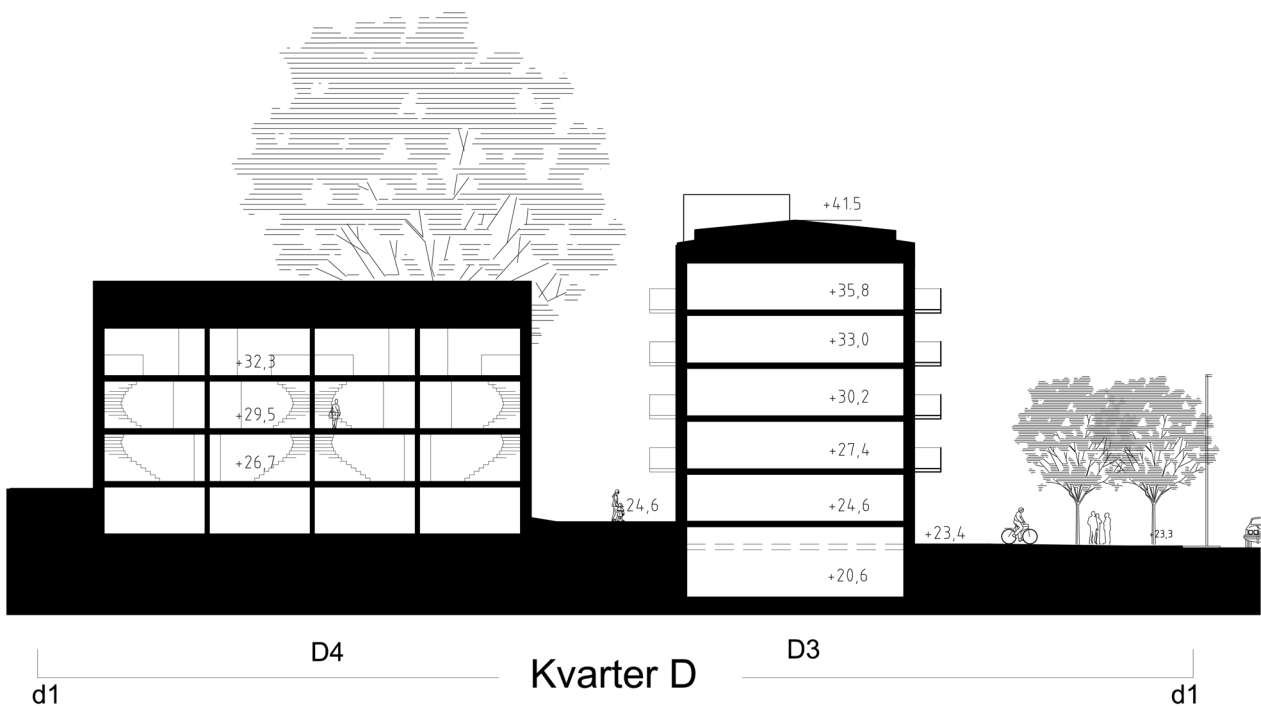
0 1 2 3 4 5

Sektion c2_200_A3
Datum: 2016-03-31

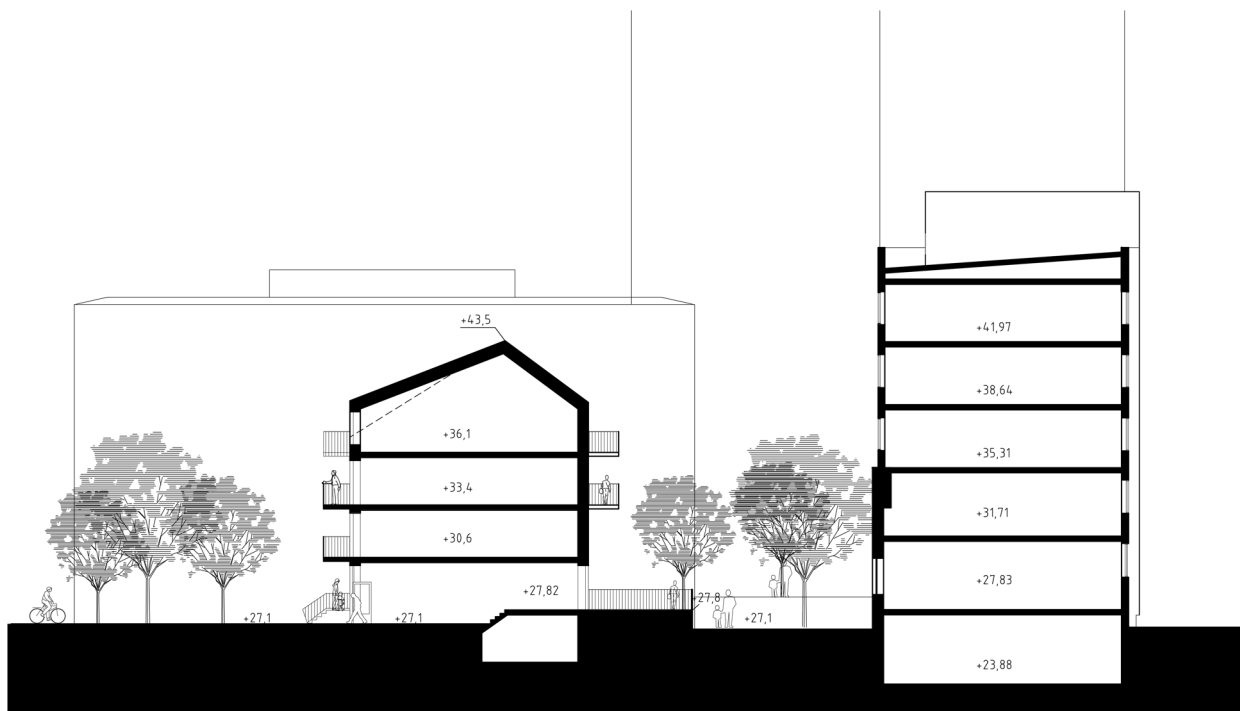
Inkom till Stockholms sta



Sektion c2_500_A3
Datum: 2016-03-31



Sektion d1_200_A3
Datum: 2016-03-31



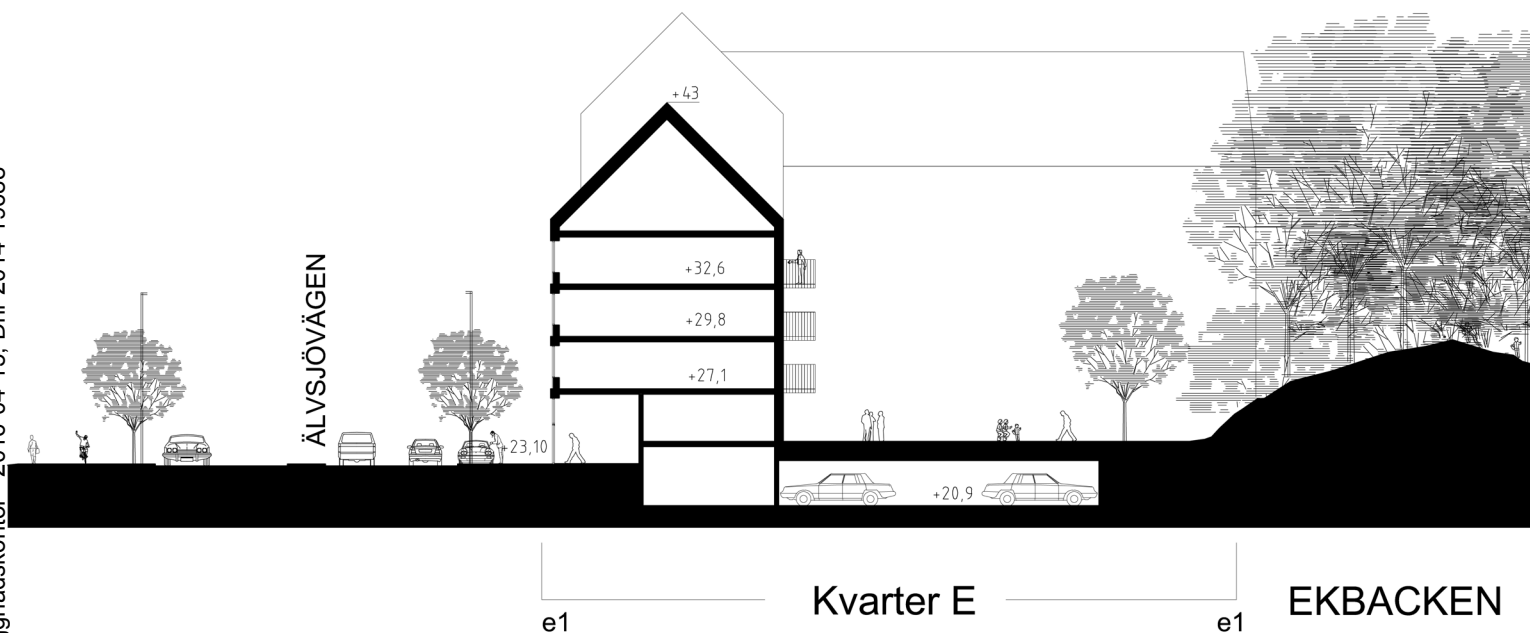
Kvarterstorget

D5
Kvarter D

HUS 8 (befintligt)
Kvarter A

0 1 2 3 4 5

Sektion d3-a4_200_A3
Datum: 2016-03-31



e1

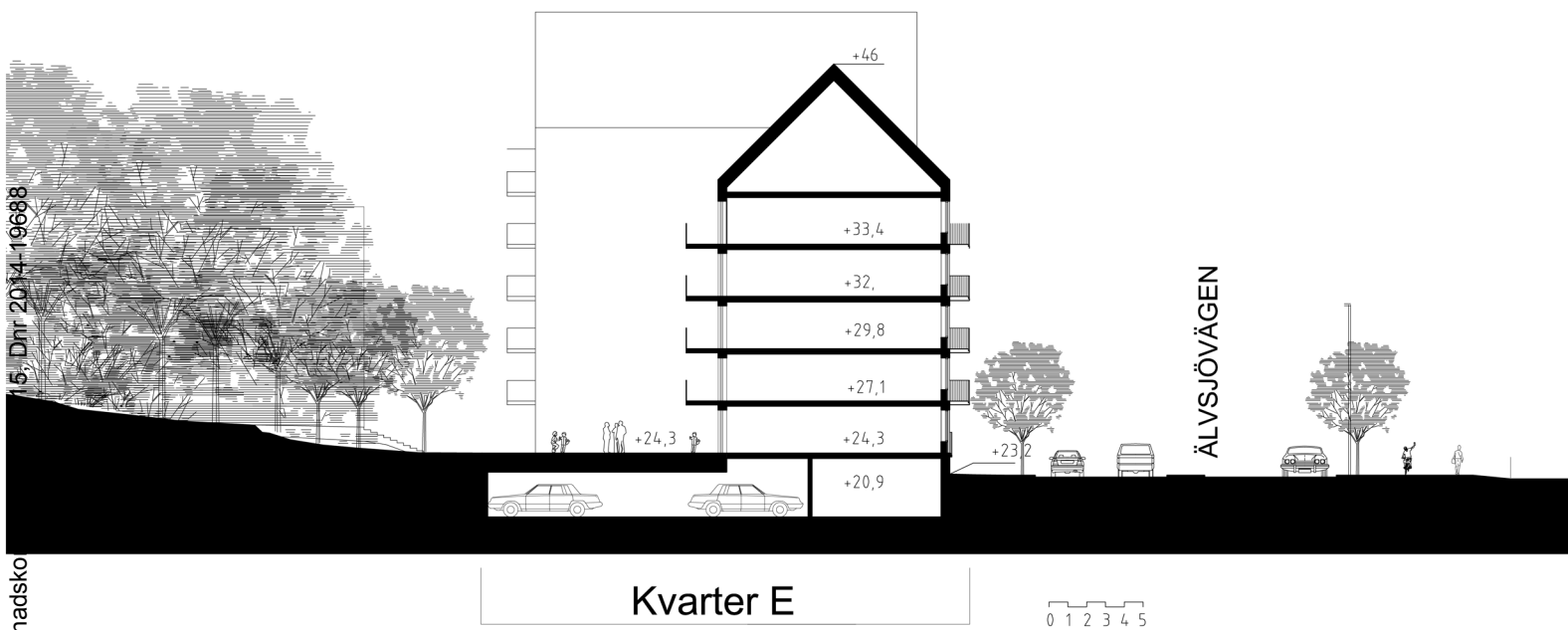
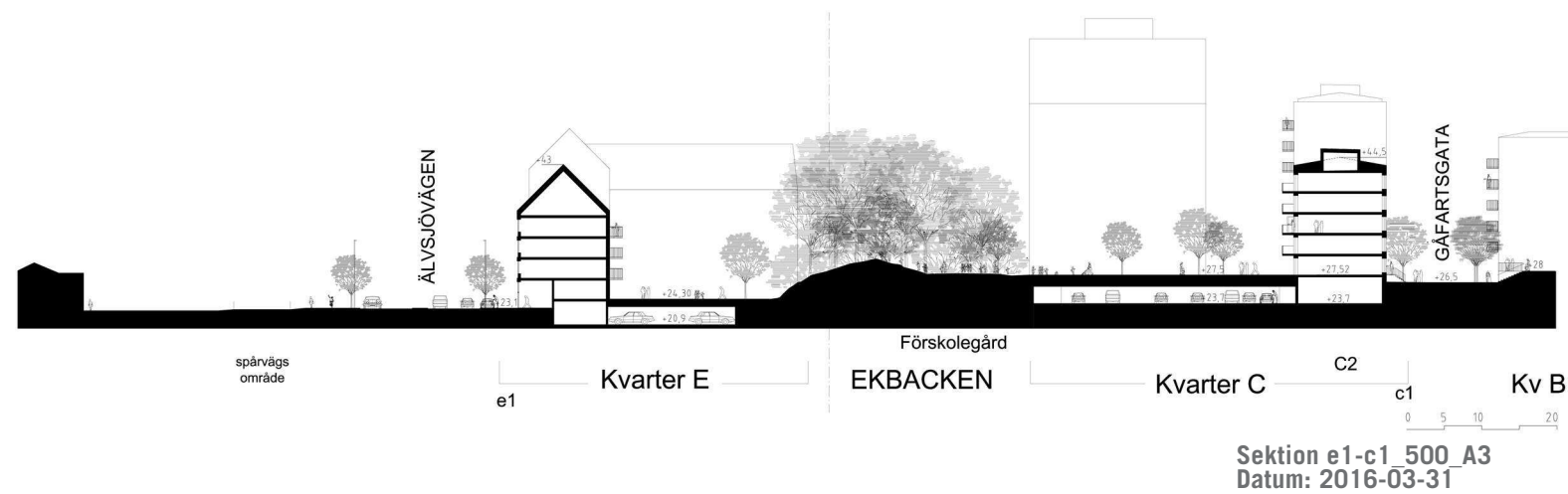
Kvarter E

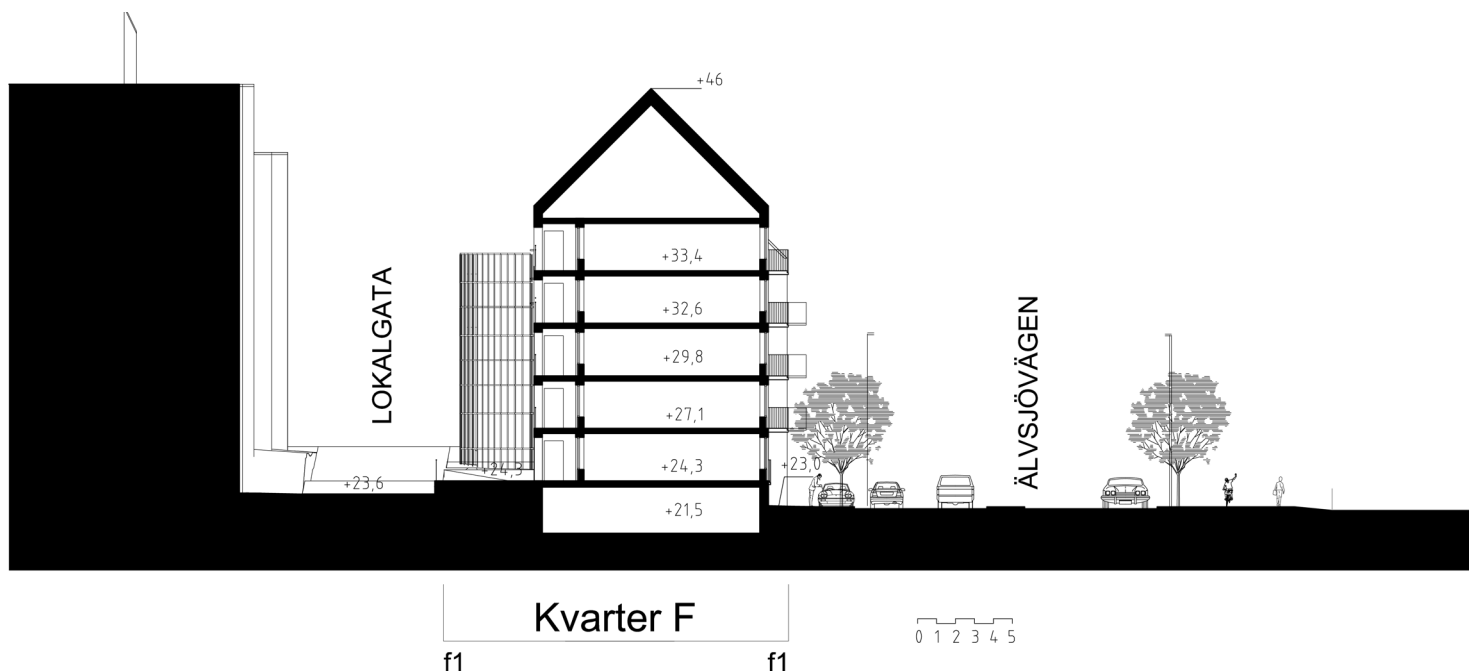
e1

EKBACKEN

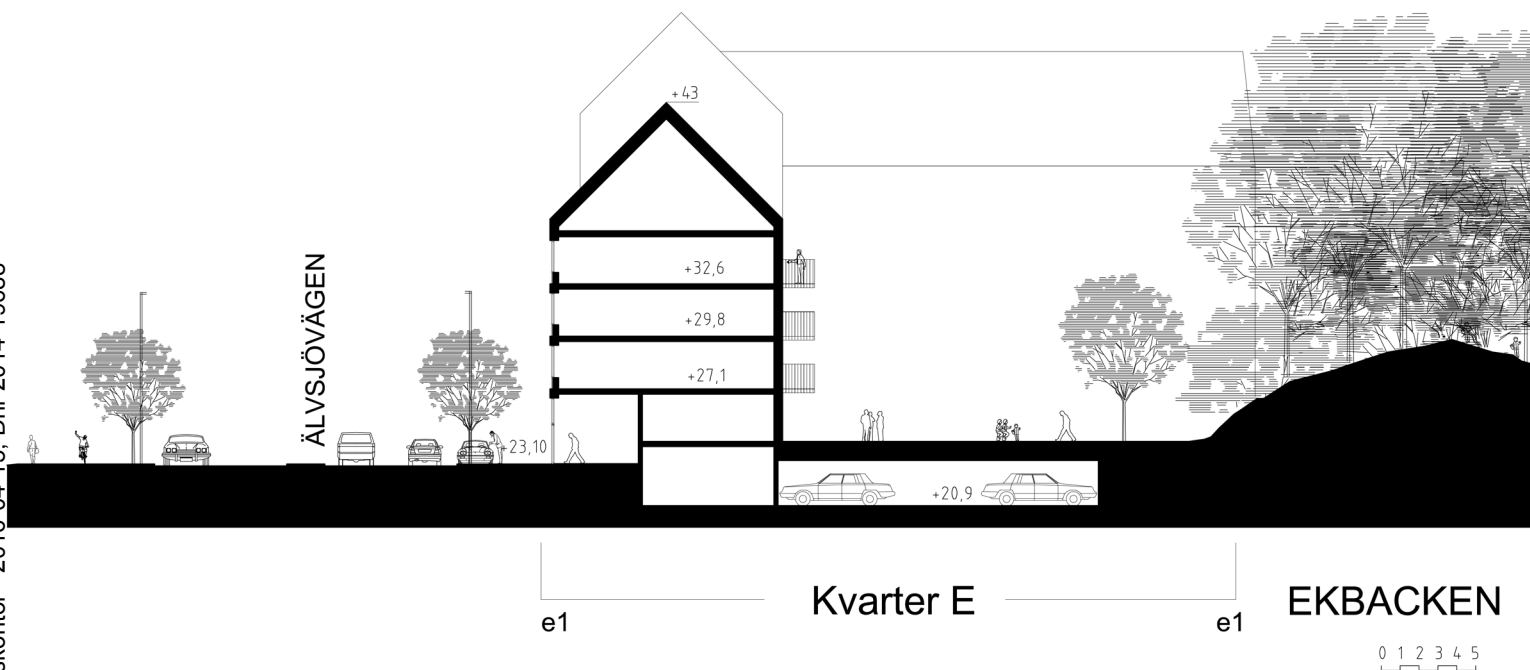
0 1 2 3 4 5

Sektion e1_200_A3
Datum: 2016-03-31

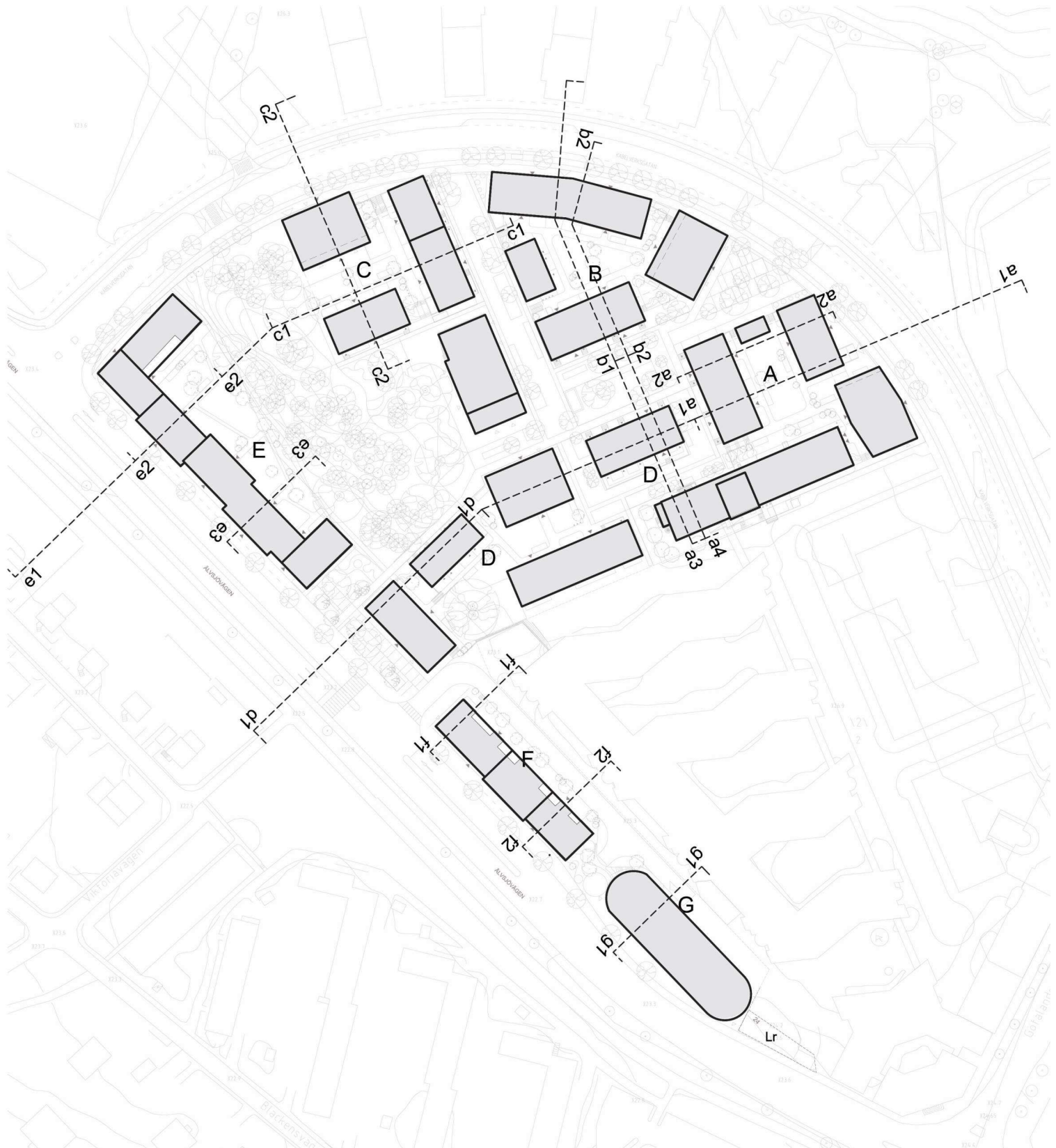


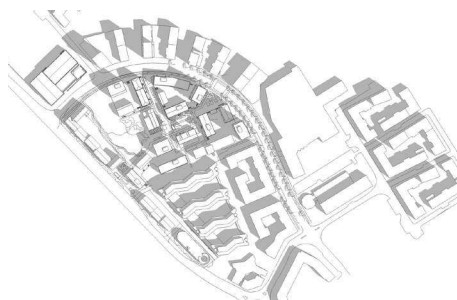


Sektion f1_200_A3
Datum: 2016-03-31



Sektion f2_200_A3
Datum: 2016-03-31

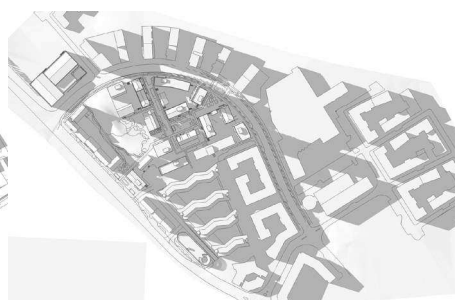




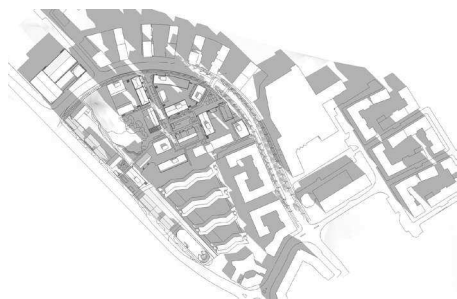
Solstudie_21juni_0900



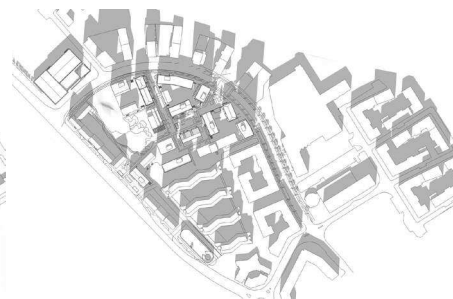
Solstudie_21juni_1500



Solstudie_21juni_1800



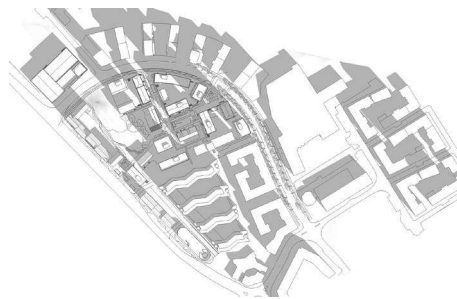
Solstudie_21mars_0900



Solstudie_21mars_1200



Solstudie_21mars_1500



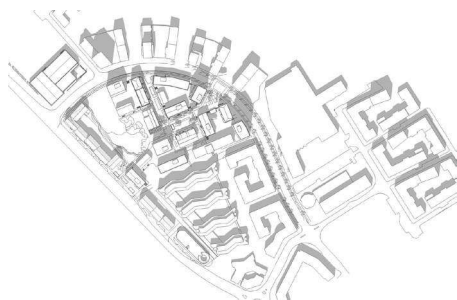
Solstudie_21september_0900



Solstudie_21september_1200



Solstudie_21september_1500



Solstudie_21juni_1200



01
Datum: 2016-03-22



02
Datum: 2016-03-31



03
Datum: 2016-03-31



04
Datum: 2016-03-22



05
Datum: 2016-03-31



06
Datum: 2016-03-22



07 Tävlingsillustration
Datum: 2015-05-17



08 Tävlingsillustration
Datum: 2015-05-17



Flygvy
Datum: 2016-03-24