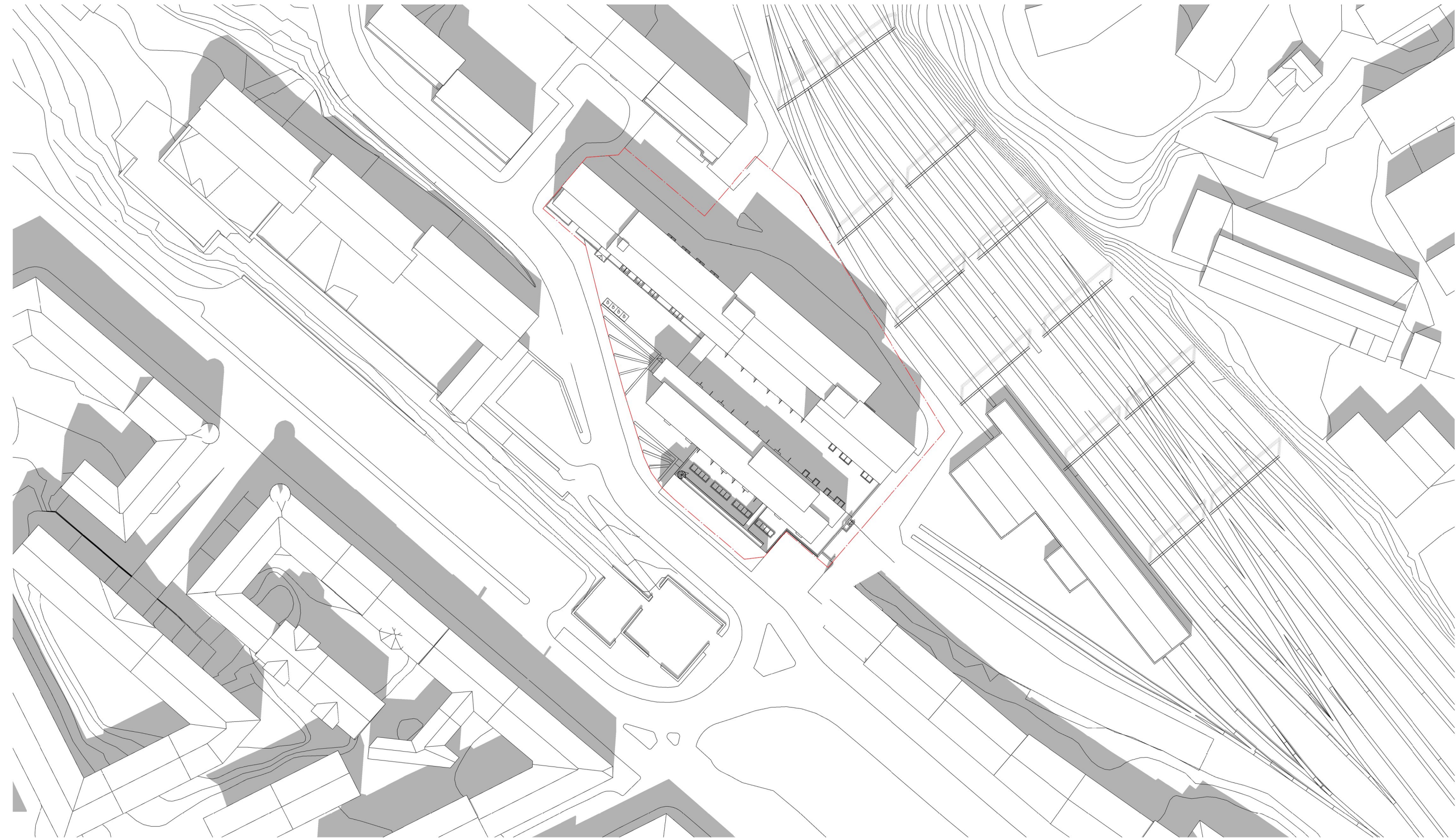
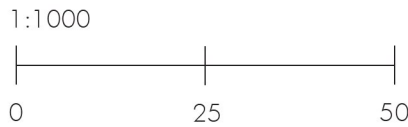


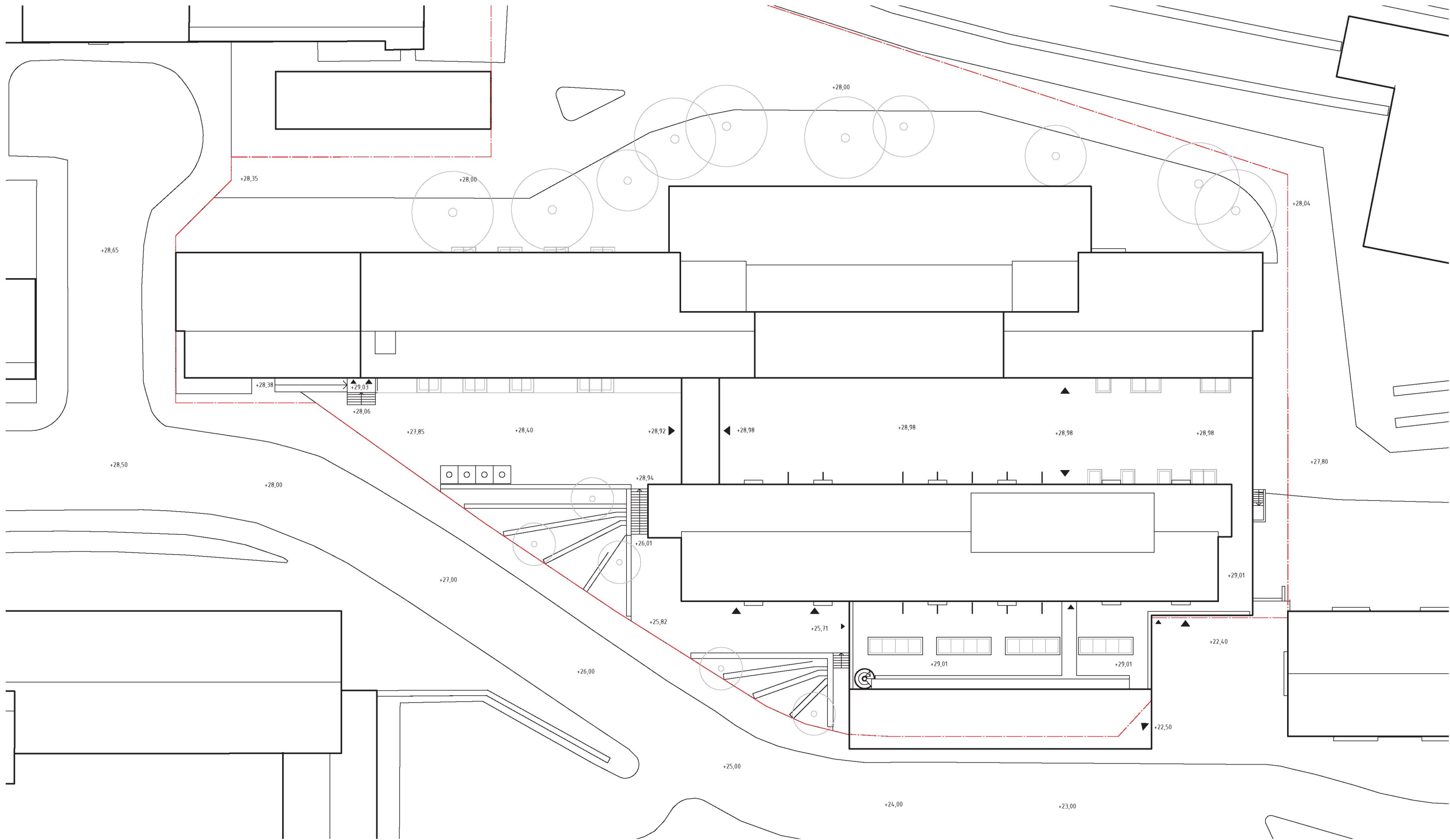
SITUATIONSPLAN – FÖRENKLAD



KV. ROSLAGSBANAN 18 - FORUM
2020-10-15

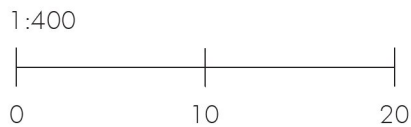


SITUATIONSPLAN – BEBYGGELSE

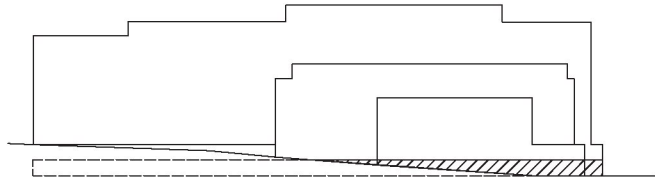
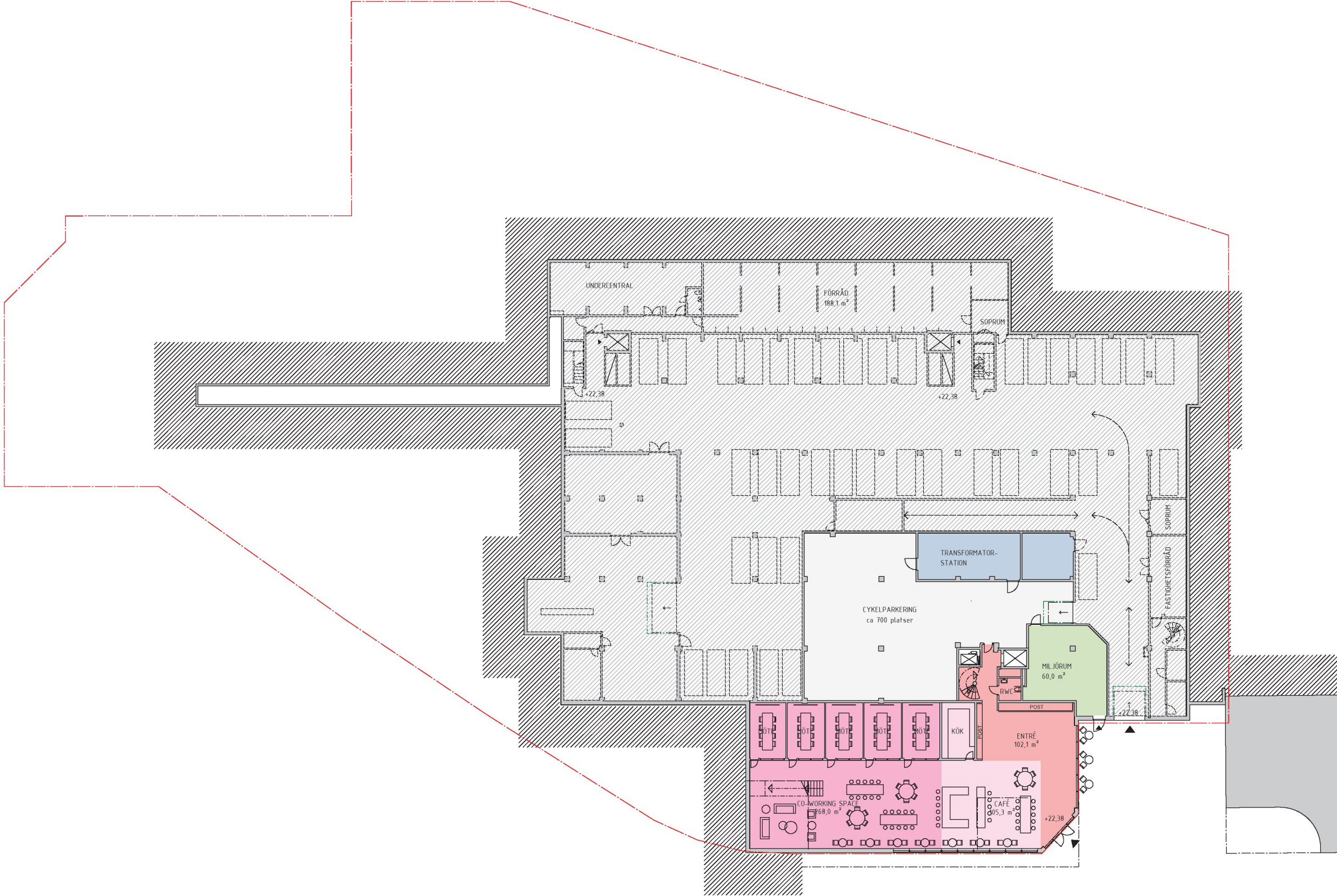


Situationsplan – Bebyggelse

KV. ROSLAGSBANAN 18 - FORUM
2020-10-15



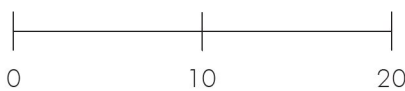
PLAN -2



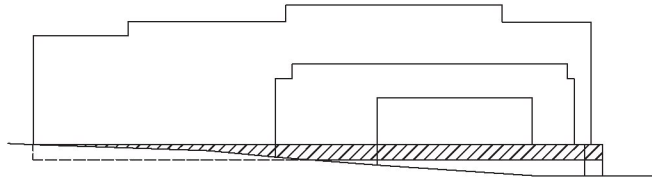
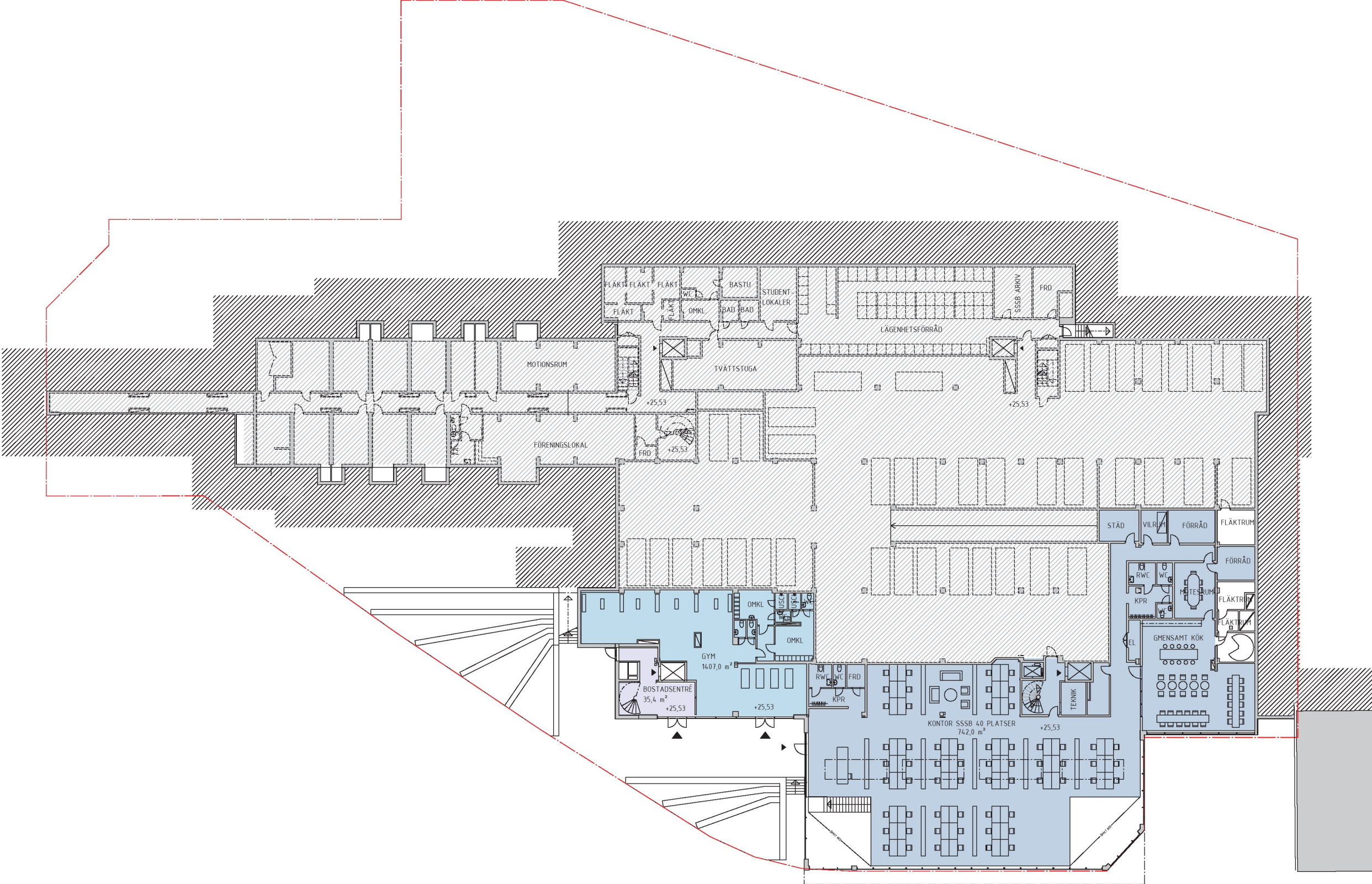
KV. ROSLAGSBANAN 18 - FORUM
2020-10-15



1:400



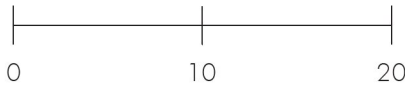
PLAN -1



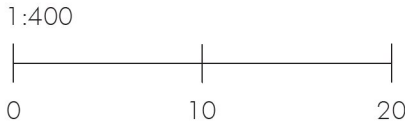
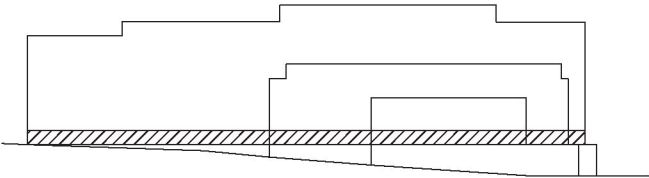
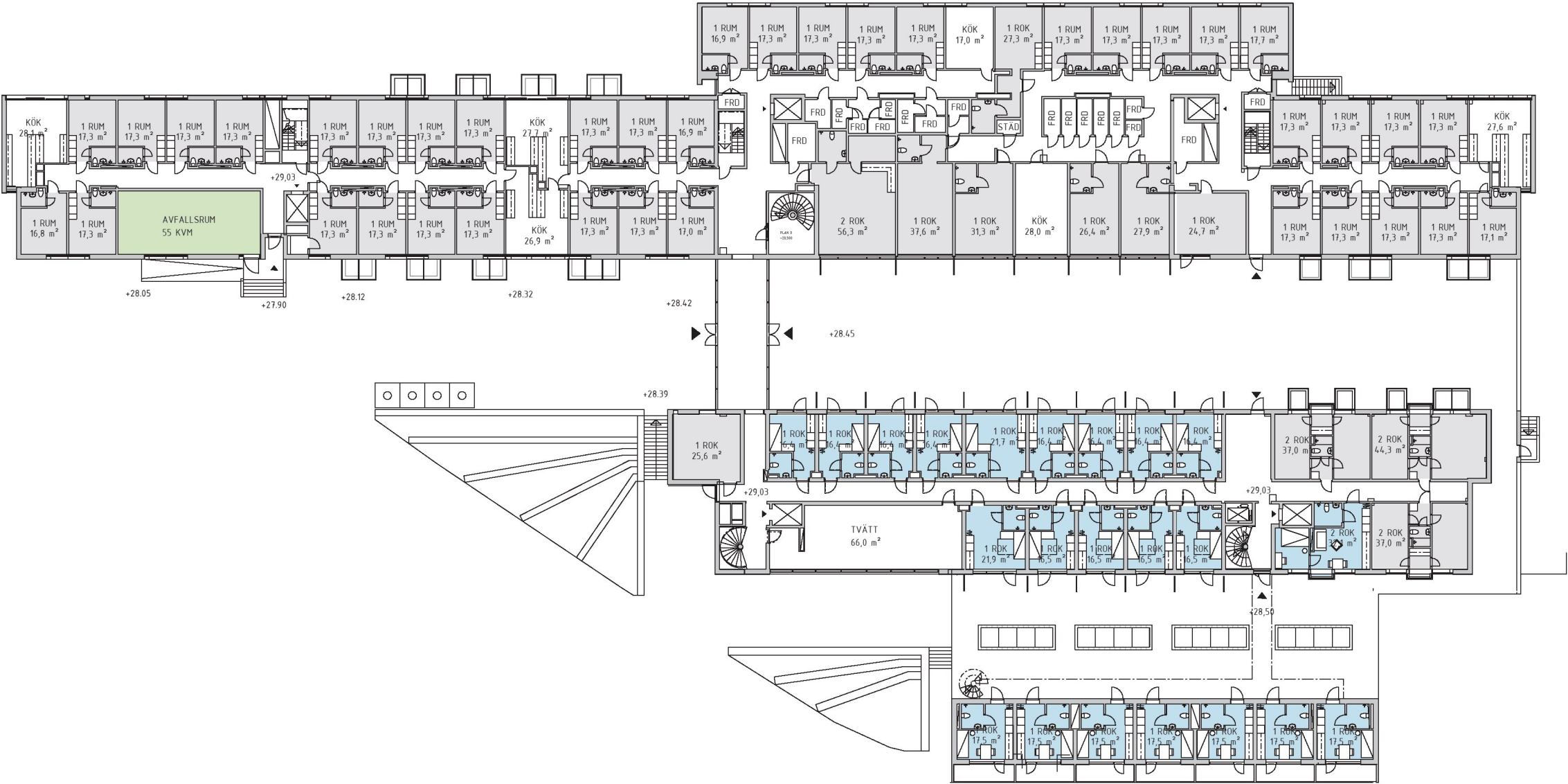
KV. ROSLAGSBANAN 18 - FORUM
2020-10-15



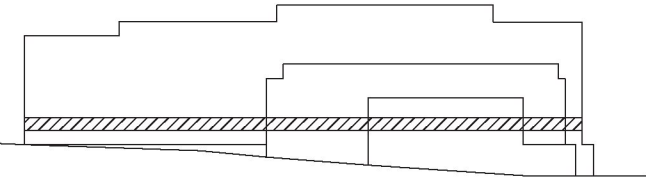
1:400



PLAN 0



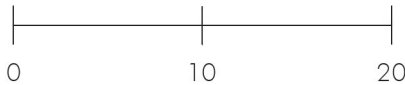
PLAN 1



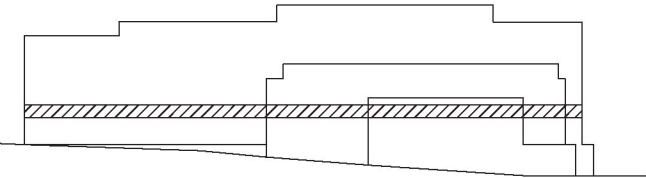
KV. ROSLAGSBANAN 18 - FORUM
2020-10-15



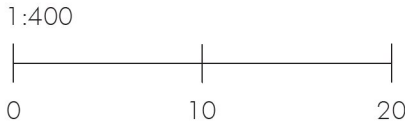
1:400



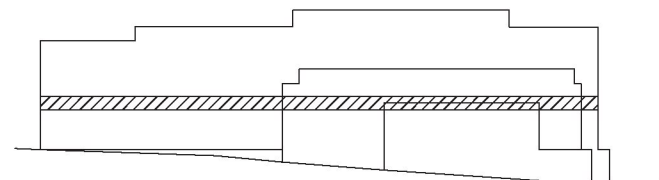
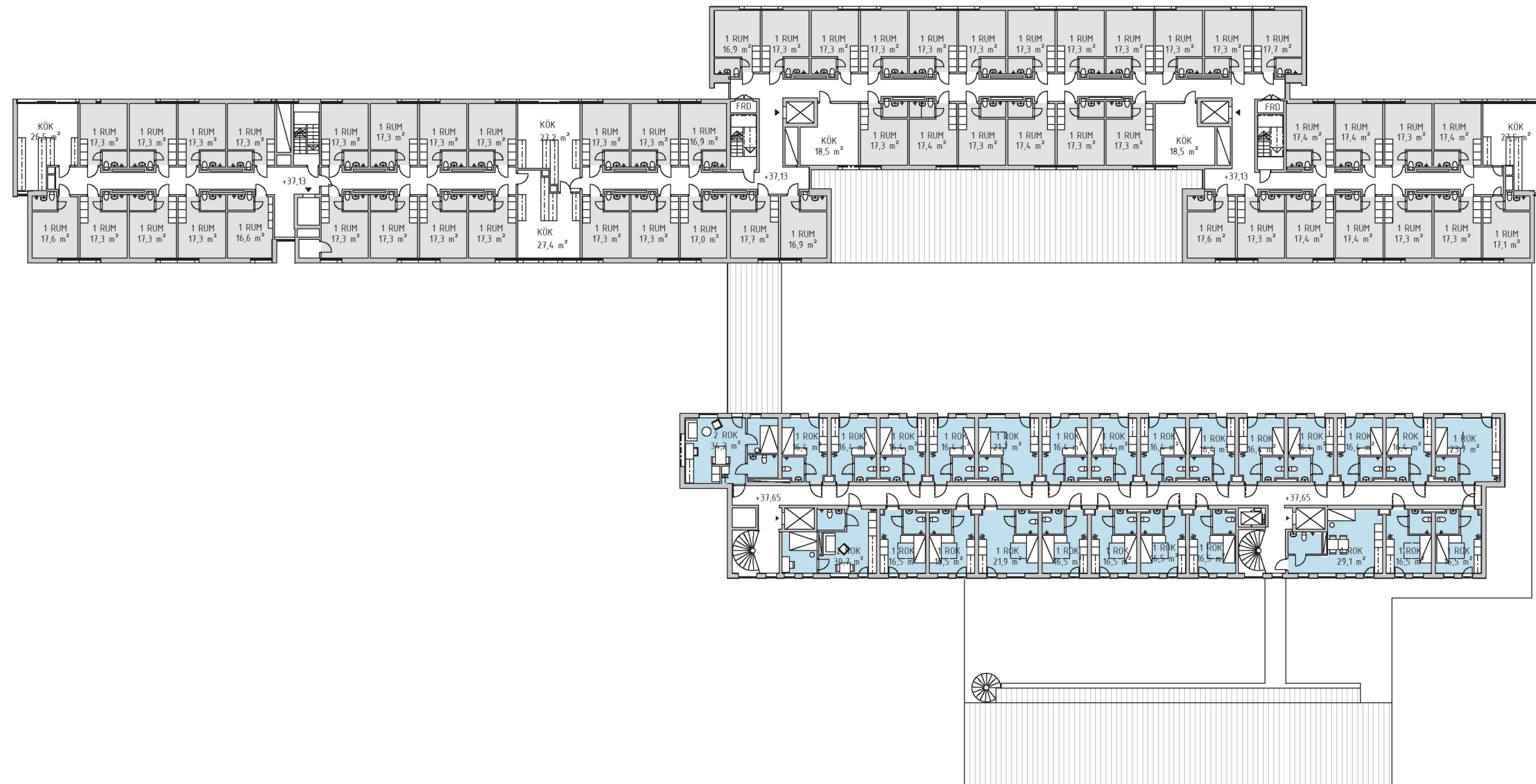
PLAN 2



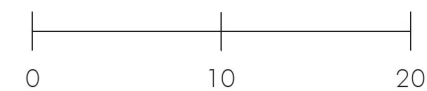
KV. ROSLAGSBANAN 18 - FORUM
2020-10-15



PLAN 3

KV. ROSLAGSBANAN 18 - FORUM
2020-10-15

1:400



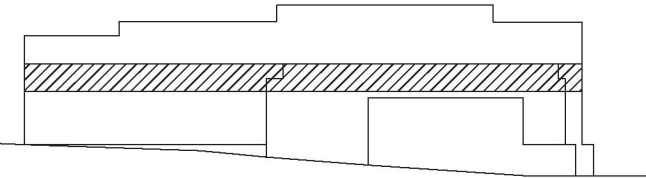
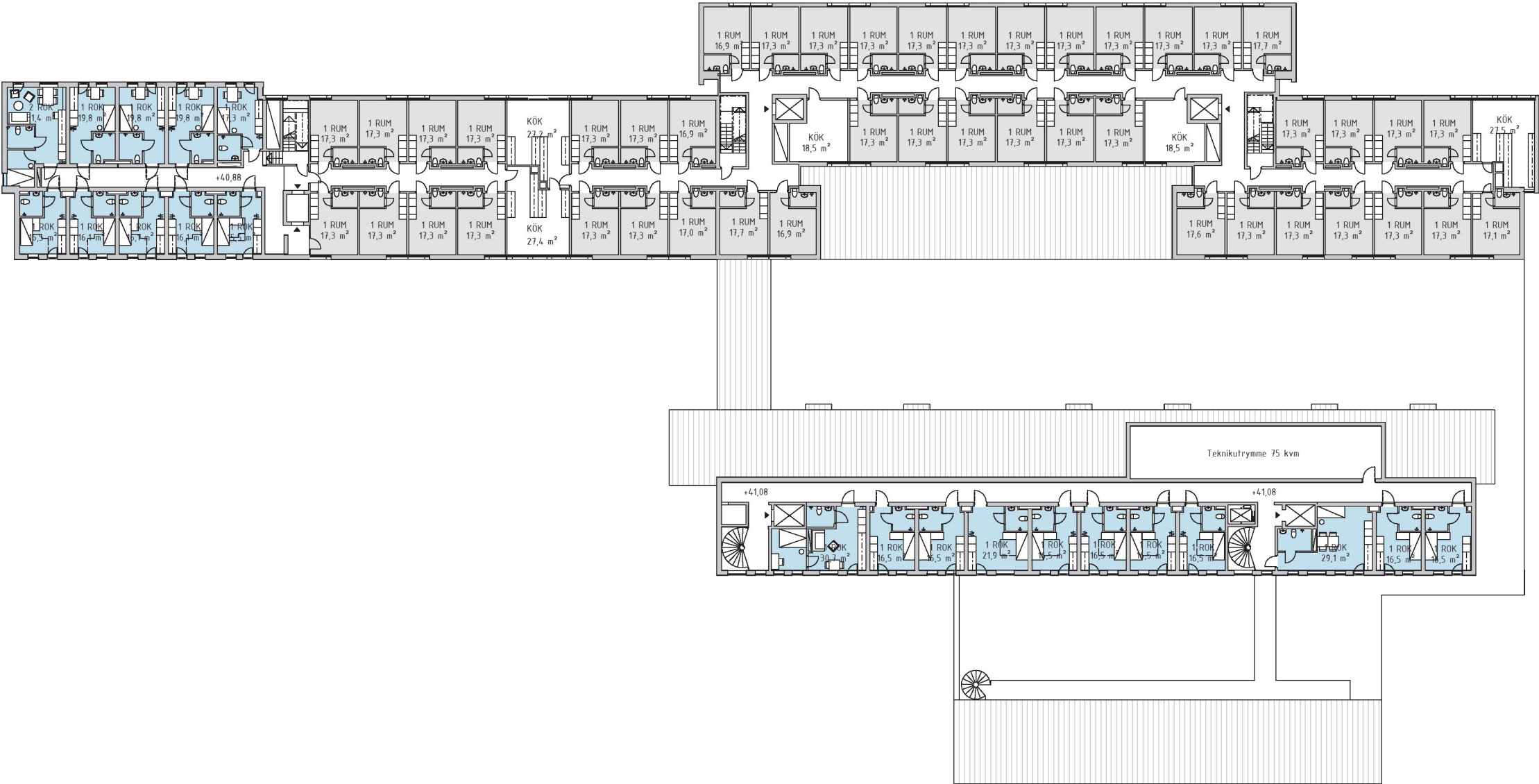
: EKOLOGI GRUPPEN

PAJU

**sandell
sandberg**



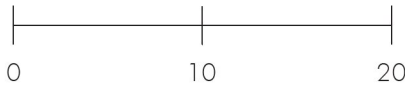
PLAN 4



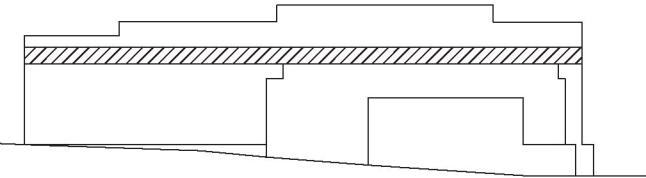
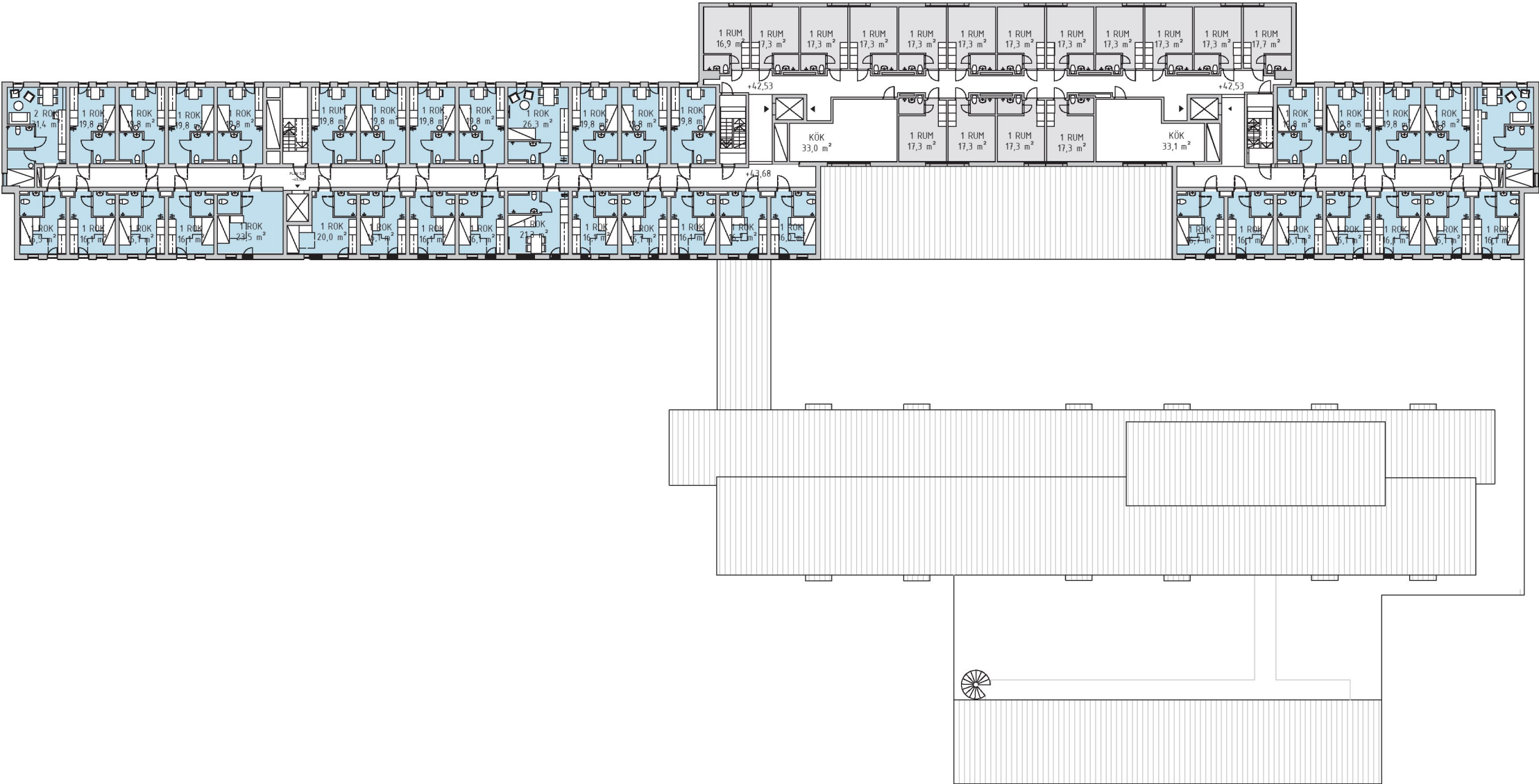
KV. ROSLAGSBANAN 18 - FORUM
2020-10-15



1:400



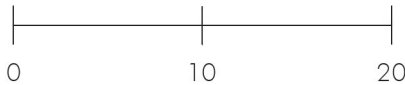
PLAN 5



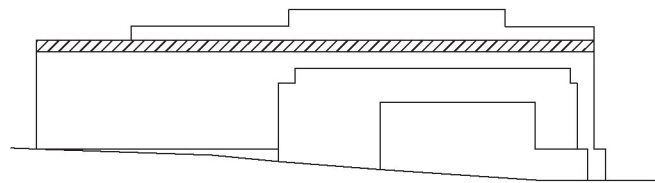
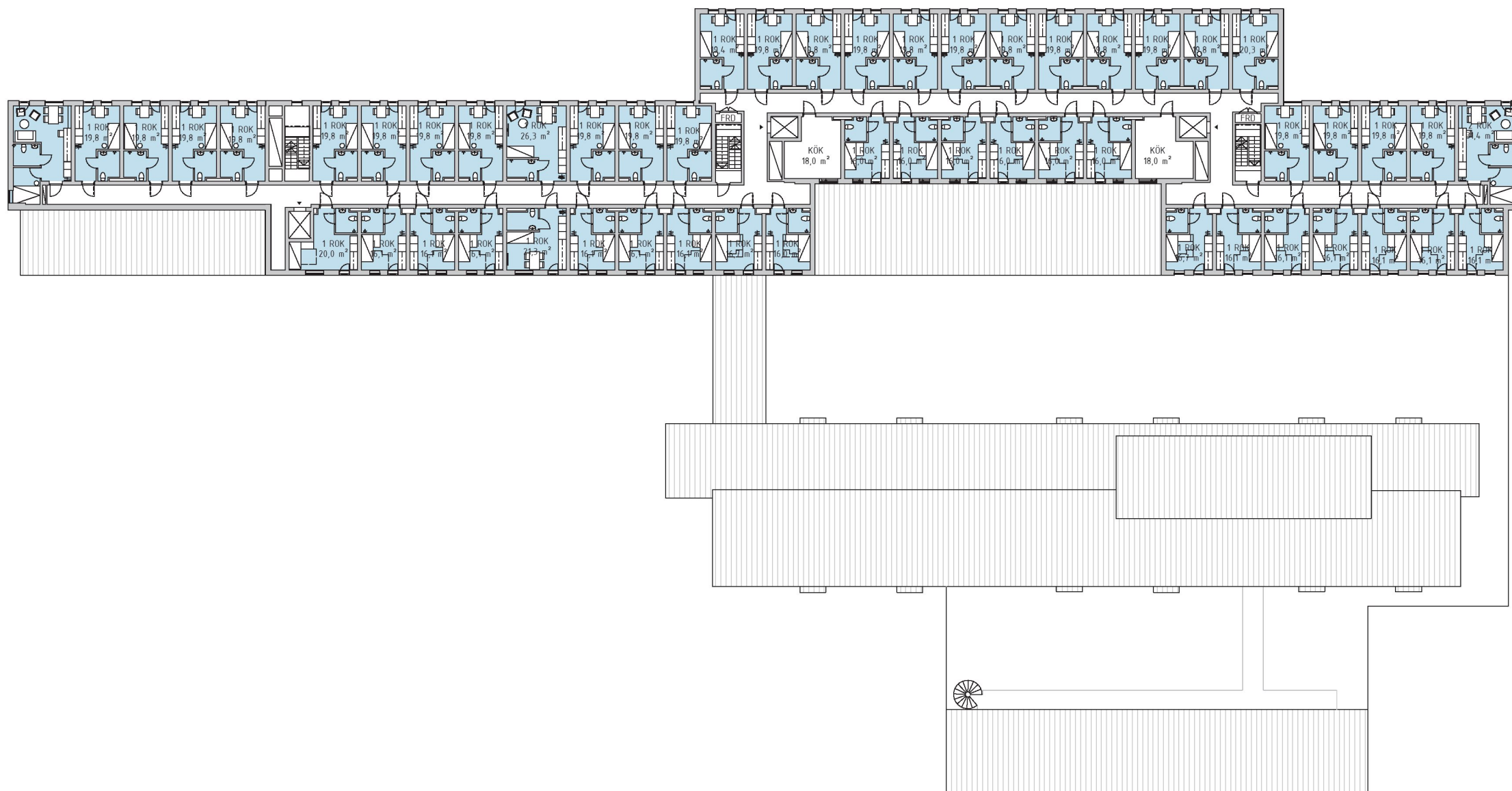
KV. ROSLAGSBANAN 18 - FORUM
2020-10-15



1:400



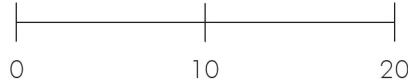
PLAN 6



KV. ROSLAGSBANAN 18 - FORUM
2020-10-15



1:400



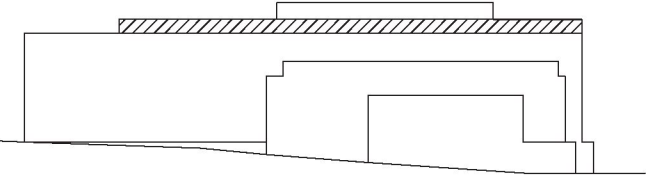
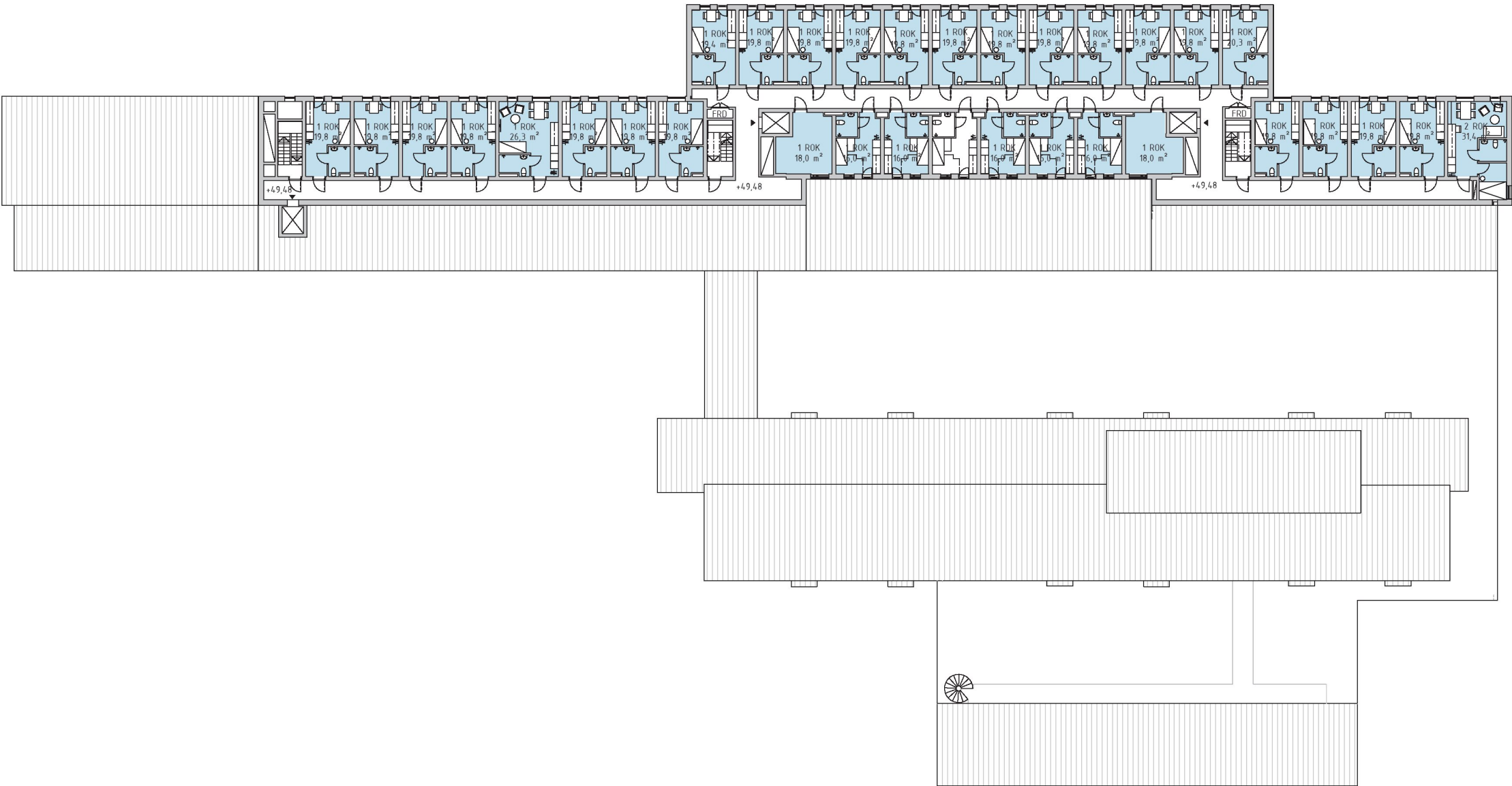
: EKOLOGISCHE GRUPPEN

PAJL

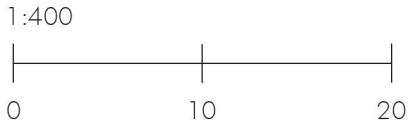
**sandell
sandberg**



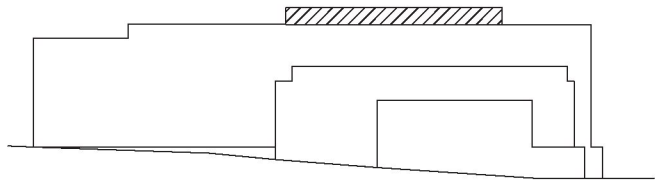
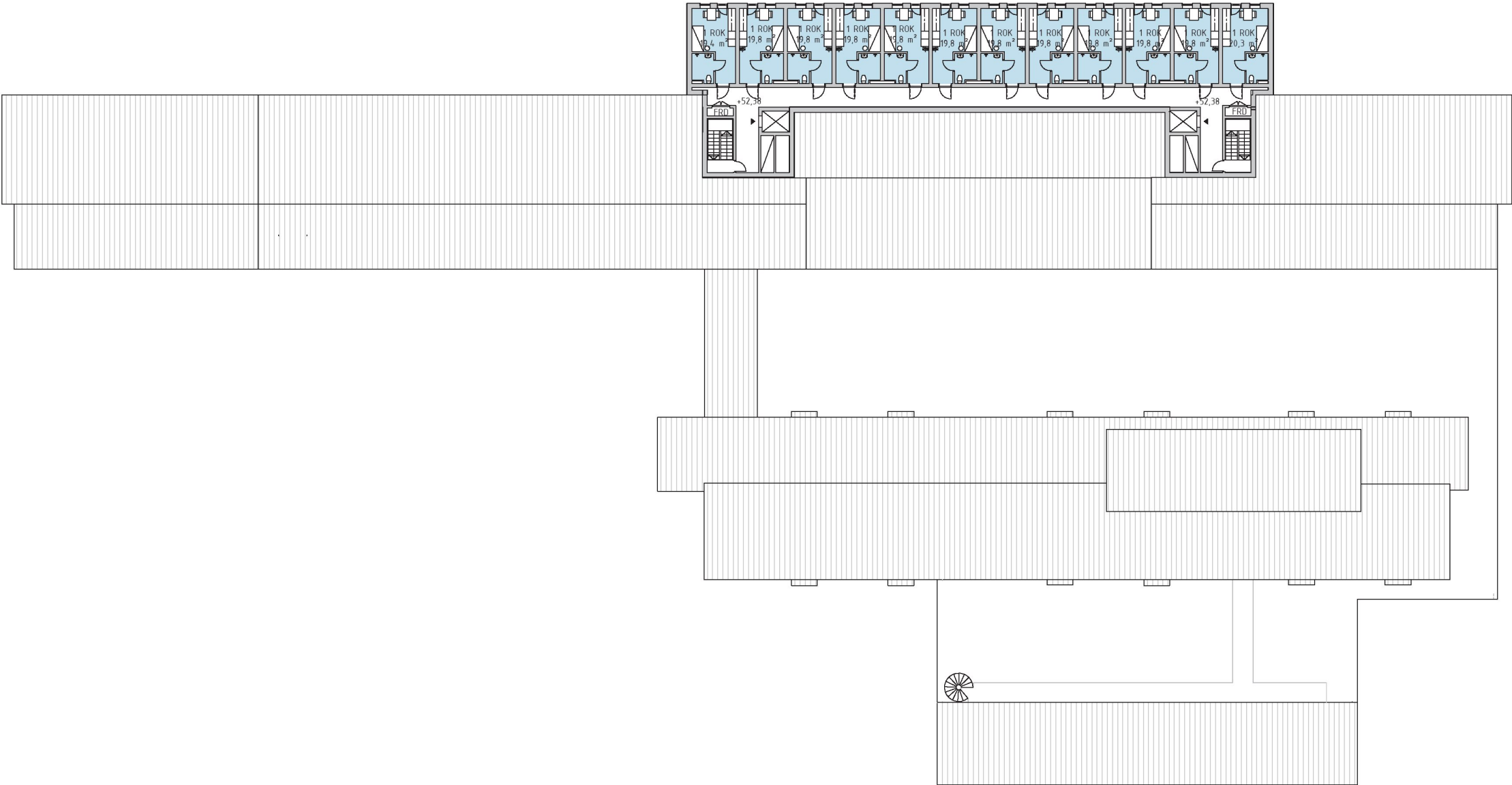
PLAN 7



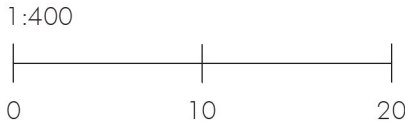
KV. ROSLAGSBANAN 18 - FORUM
2020-10-15



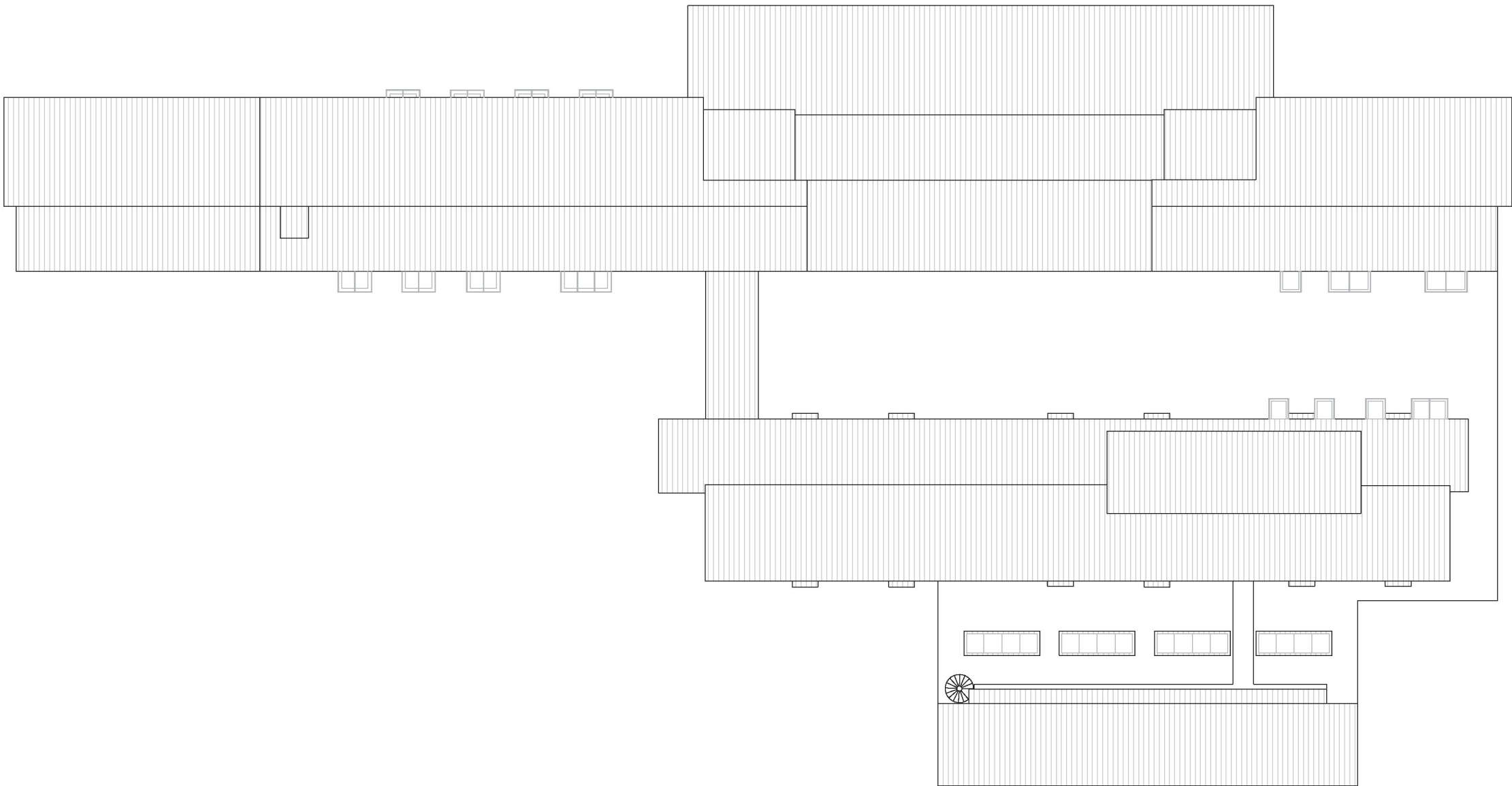
PLAN 8



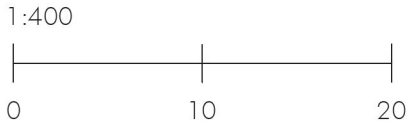
KV. ROSLAGSBANAN 18 - FORUM
2020-10-15



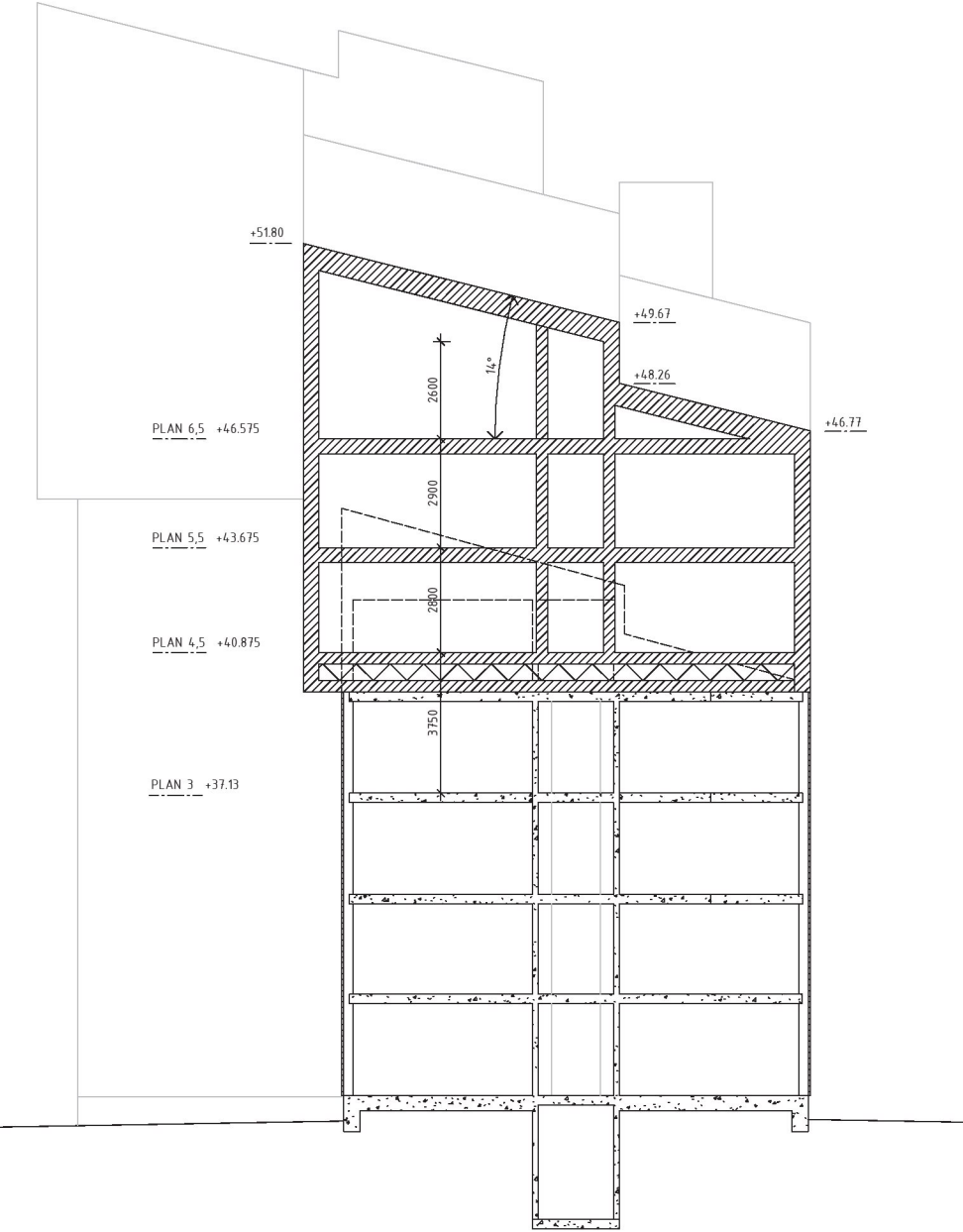
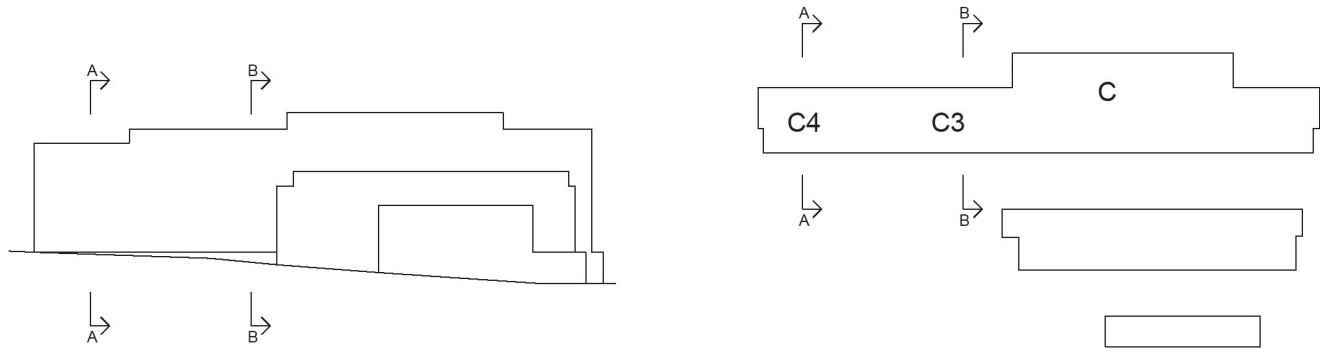
TAKPLAN



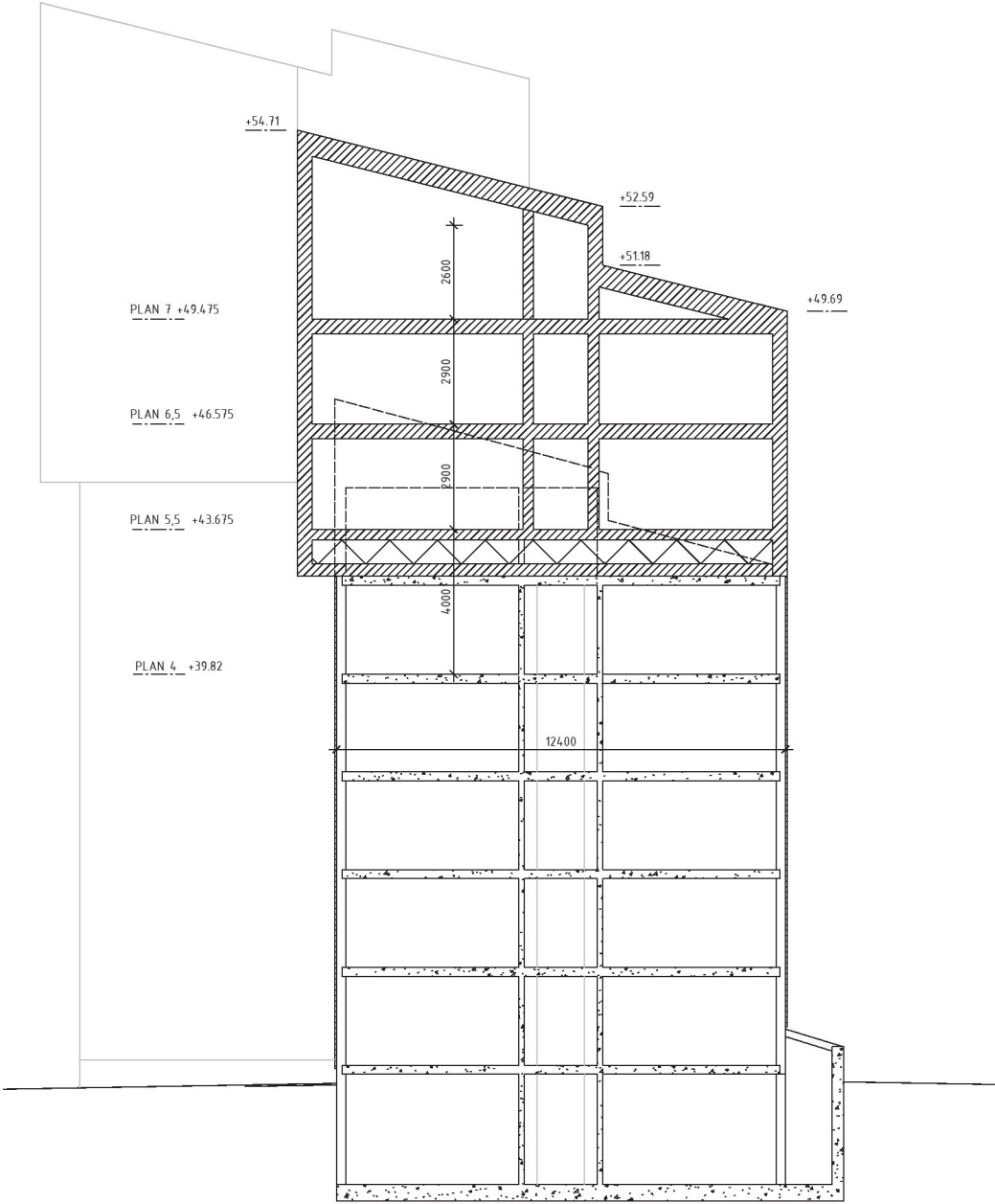
Takplan. Skala 1:200



SEKTIONER



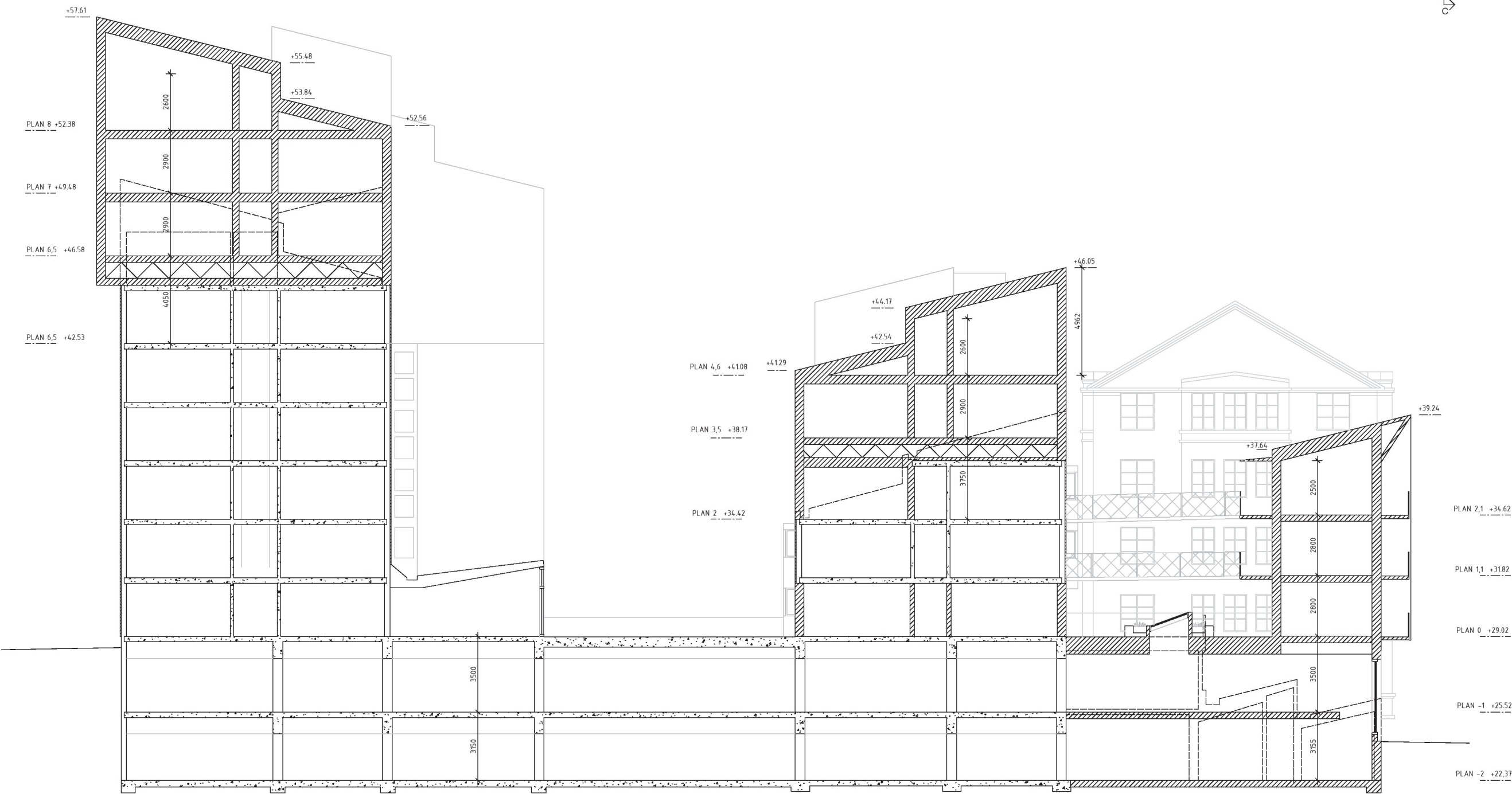
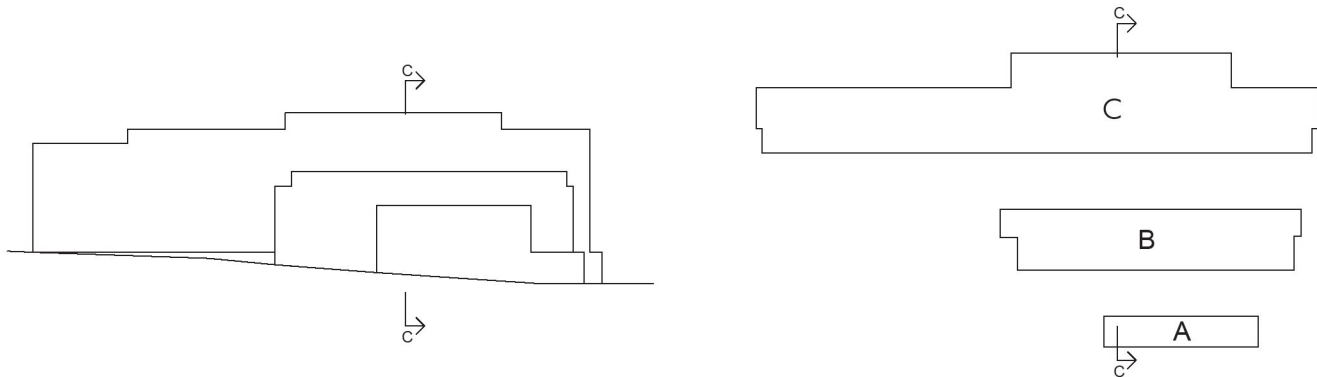
Sektion A-A



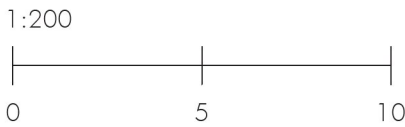
Sektion B-B



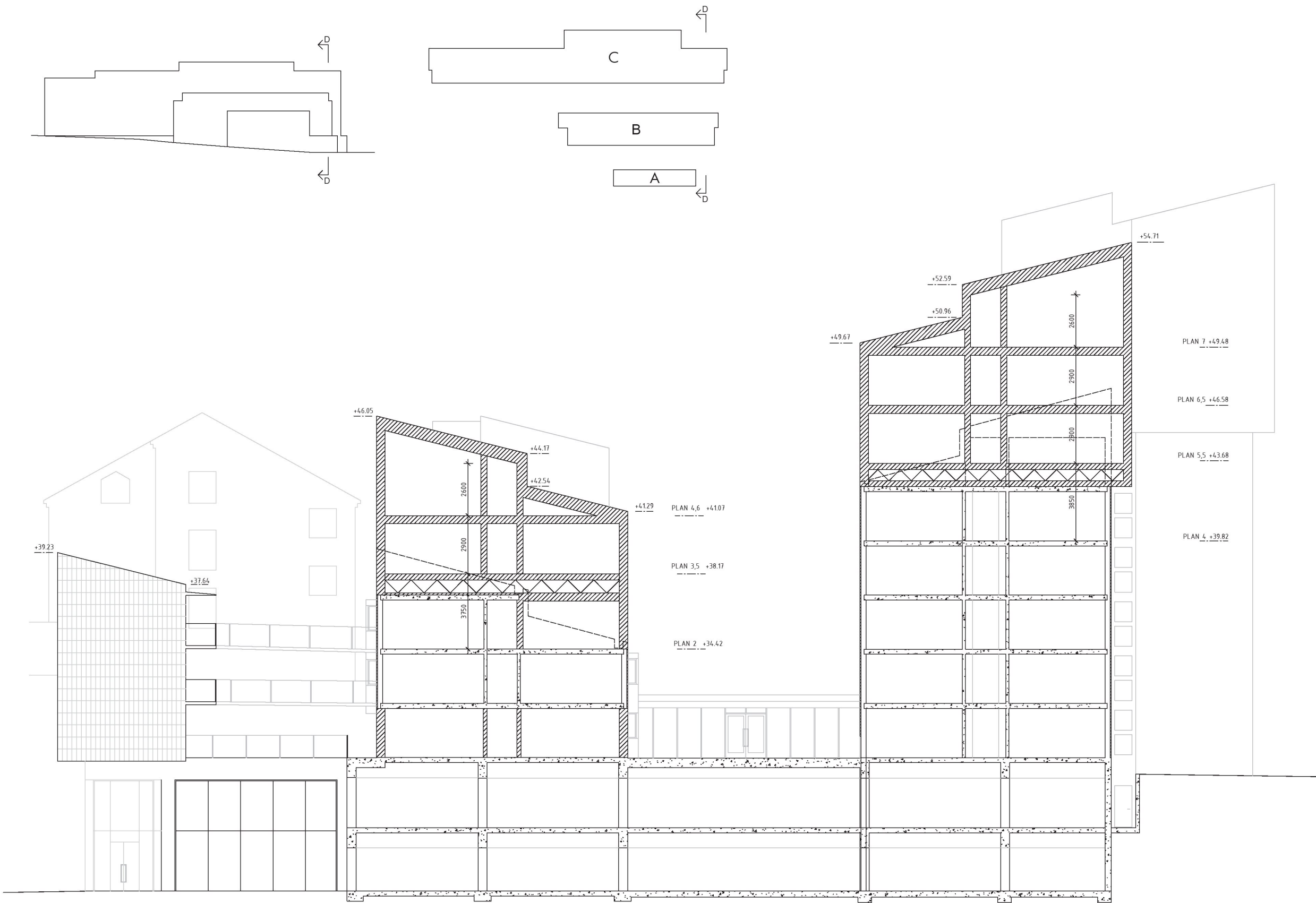
SEKTIONER



Sektion C-C



SEKTIONER



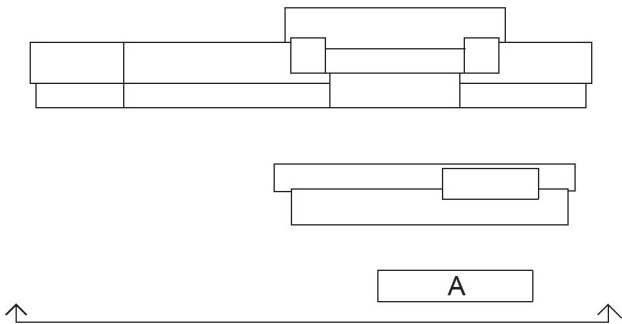
Sektion D-D



FASADER



Fasad mot sydväst. Hus A.



FASADER



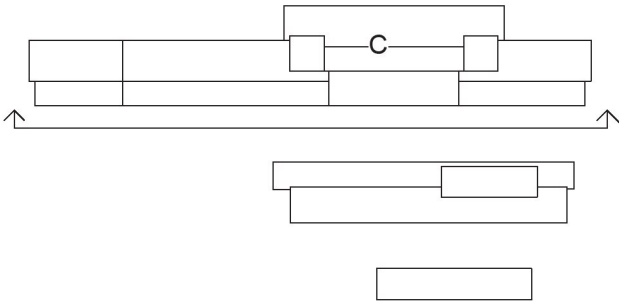
Fasad mot sydväst. Hus B.



FASADER

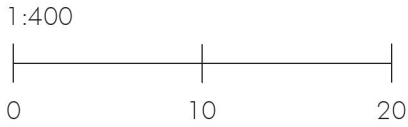
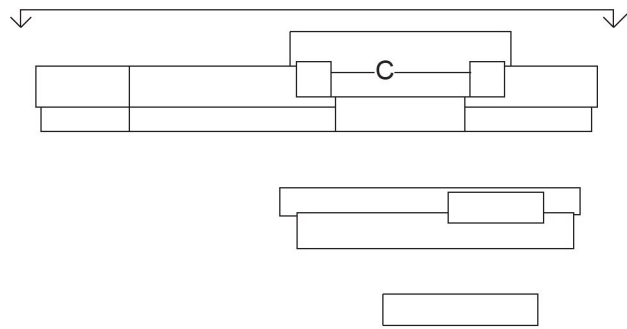


Fasad mot sydväst. Hus C.





Fasad mot nordost. Hus C.

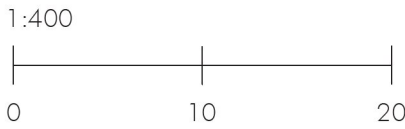
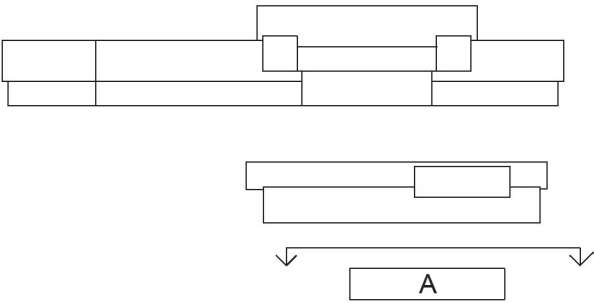
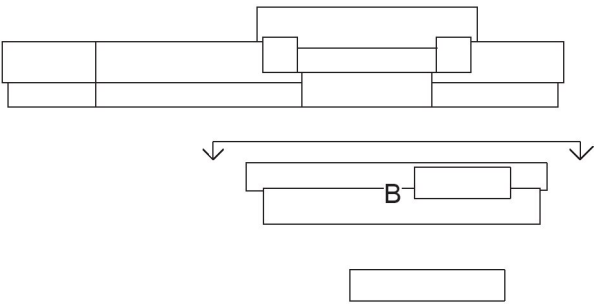




Fasad mot nordväst - Hus B.



Fasad mot nordöst - Hus AA



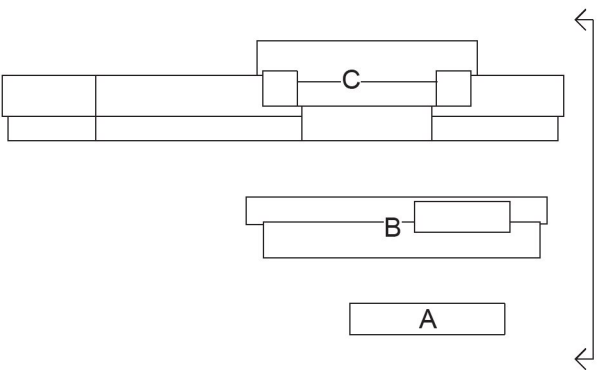
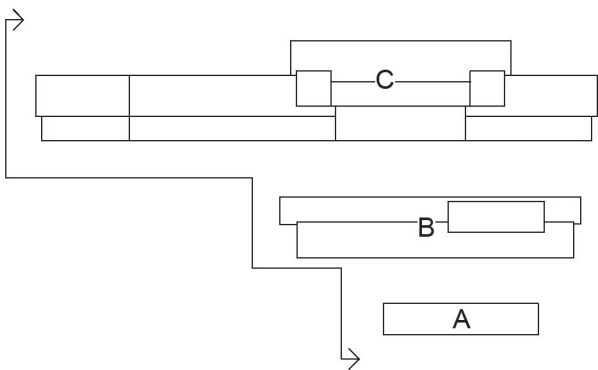
FASADER



Fasad mot nordväst. Hus C-B-A.

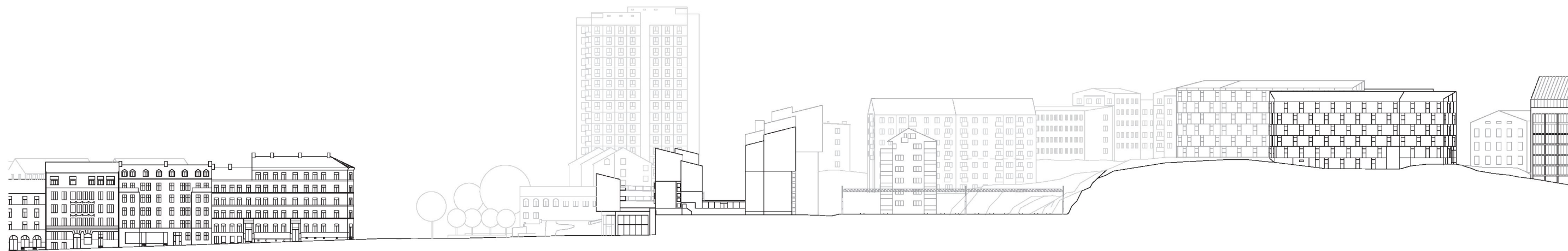


Fasad mot sydöst. Hus A-B-C.





Sektion längst med Valhallavägen



Sektion från Surbrunnsgatan över Valhallavägen till Malvinas väg

PERSPEKTIV FRÅN VALHALLAVÄGEN



PERSPEKTIV FRÅN NORDVÄST OCH KÖRSBÄRSVÄGEN



PERSPEKTIV FRÅN VÄSTER



KV. ROSLAGSBANAN 18 - FORUM
2020-10-15



PERSPEKTIV FRÅN ÖSTER



KV. ROSLAGSBANAN 18 - FORUM
2020-10-15

Inkom till Stockholms stadsbyggnadskontor - 2020-11-02, Dnr 2017-18577

PERSPEKTIV ÖVER INRE GÅRD



PERSPEKTIV ÖVER FRÄMRE GÅRD



PERSPEKTIV ENTRETORG, CAFE & CO-WORKING SPACE



PERSPEKTIV FRÅN VANADISLUNDEN



PERSPEKTIV FRÅN OBSERVATORIELUNDEN



FÅGELPERSPEKTIV FRÅN VÄST



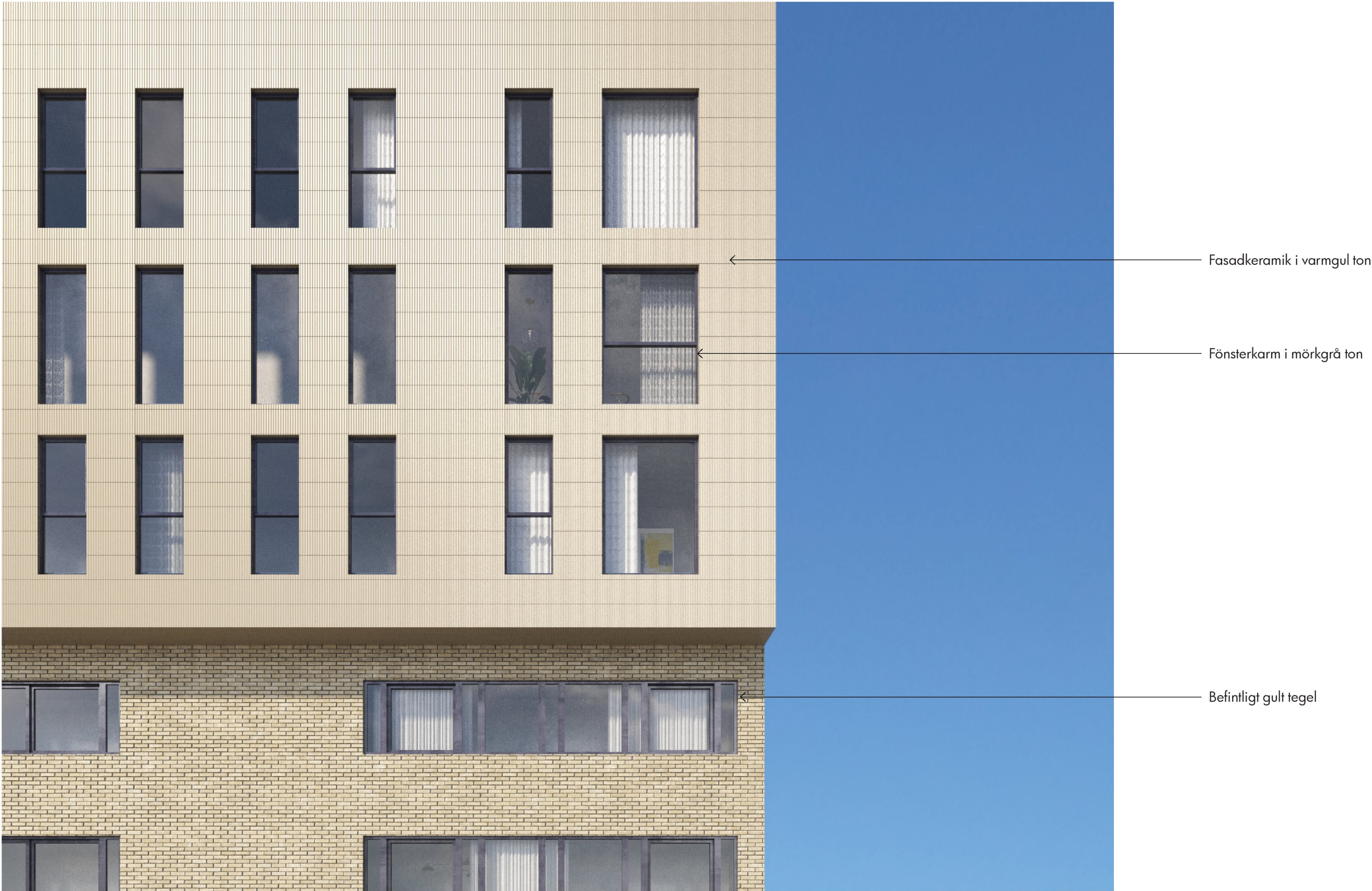
KV. ROSLAGSBANAN 18 - FORUM
2020-10-15



FÅGELPERSPEKTIV FRÅN VÄST



FASADUTSNITT



Fasadutsnitt mot nordost. Hus C.

FASADUTSNITT



Träpanel i cederträ

Fönsterkarm i mörkgrå färg

Fasadutsnitt mot sydväst Hus A.

PERSPEKTIV FRÅN GÅNGBRO ÖVER ROSLAGSBANAN



KV. ROSLAGSBANAN 18 - FORUM
2020-10-15

Inkom till Stockholms stadsbyggnadskontor - 2020-11-02, Dnr 2017-18577

PERSPEKTIV FRÅN VALHALLAVÄGEN

