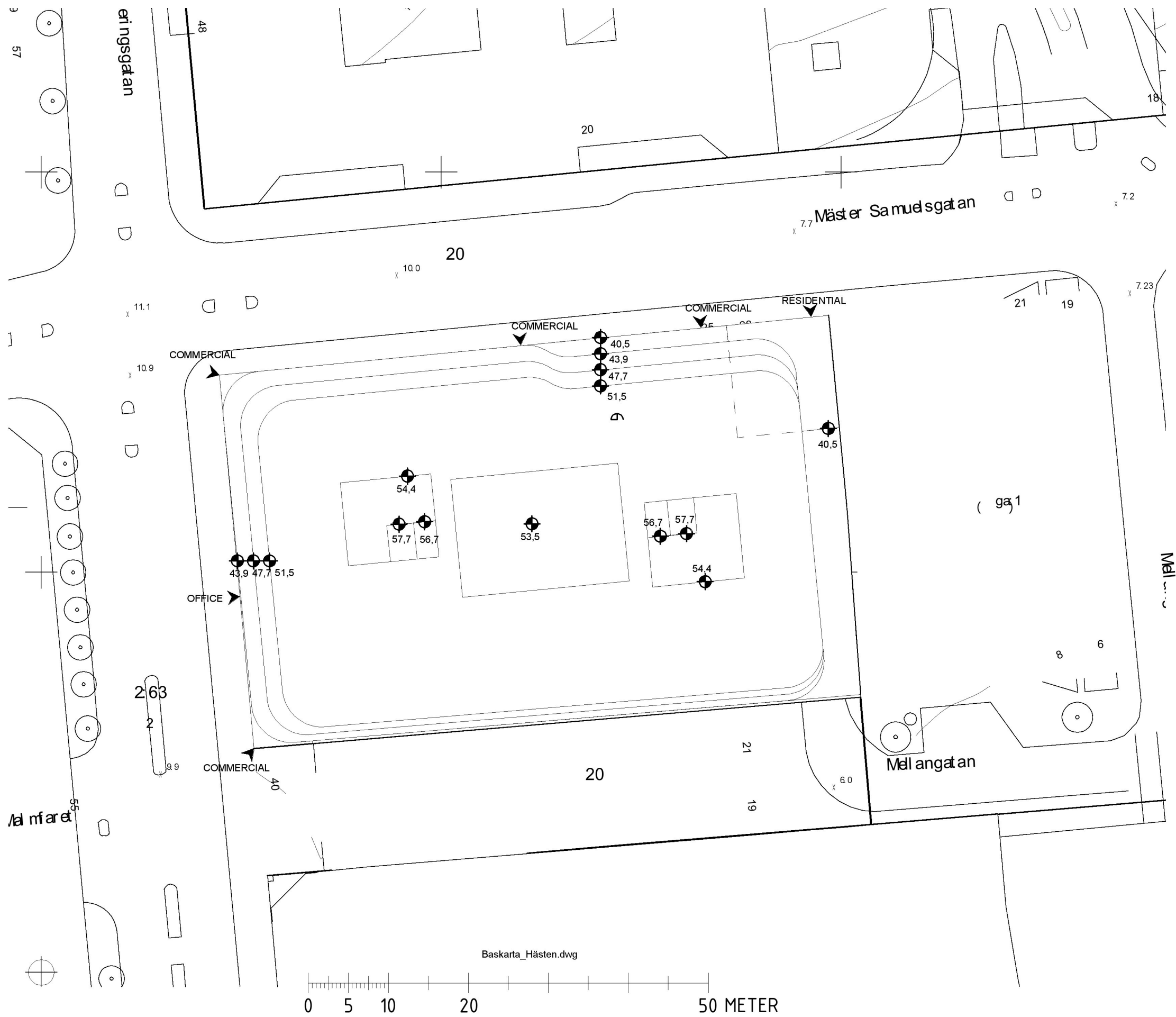
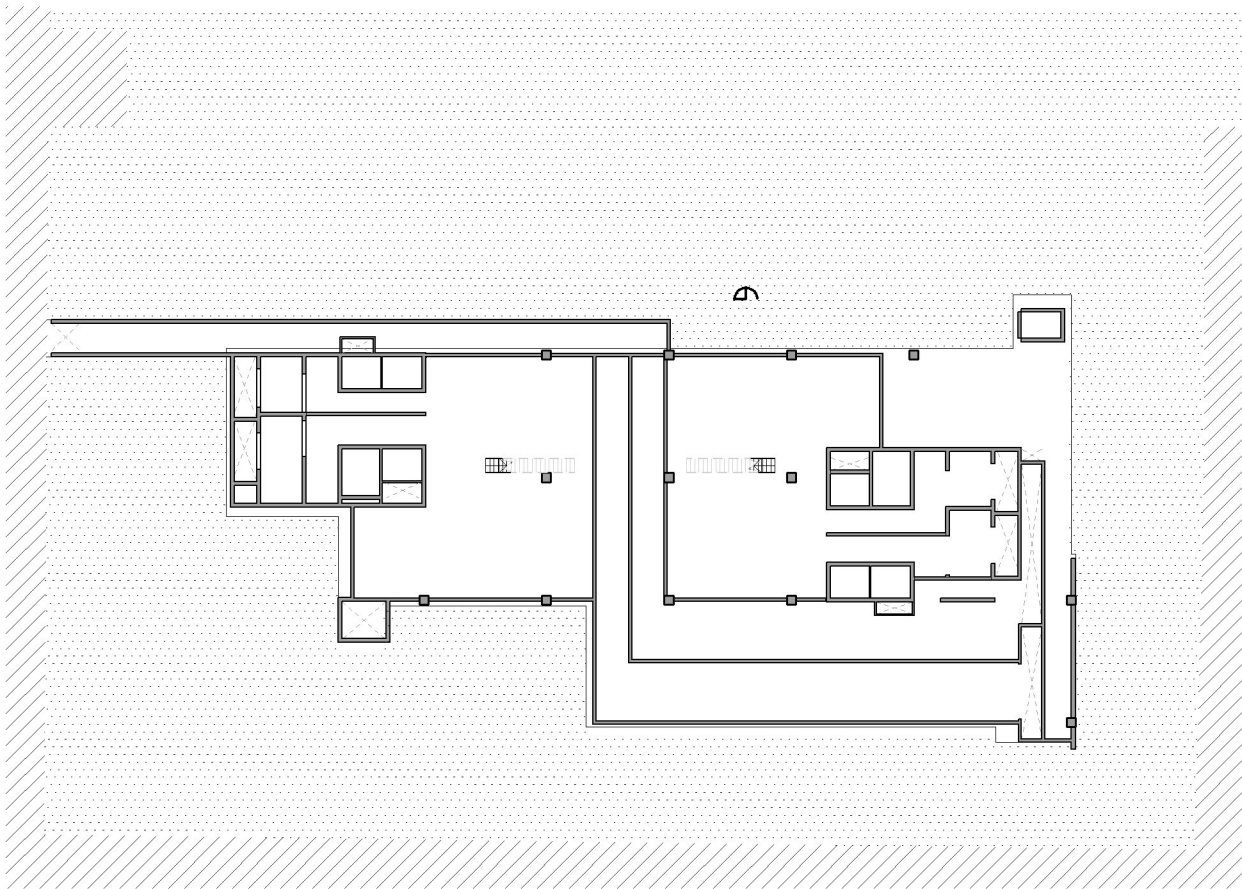


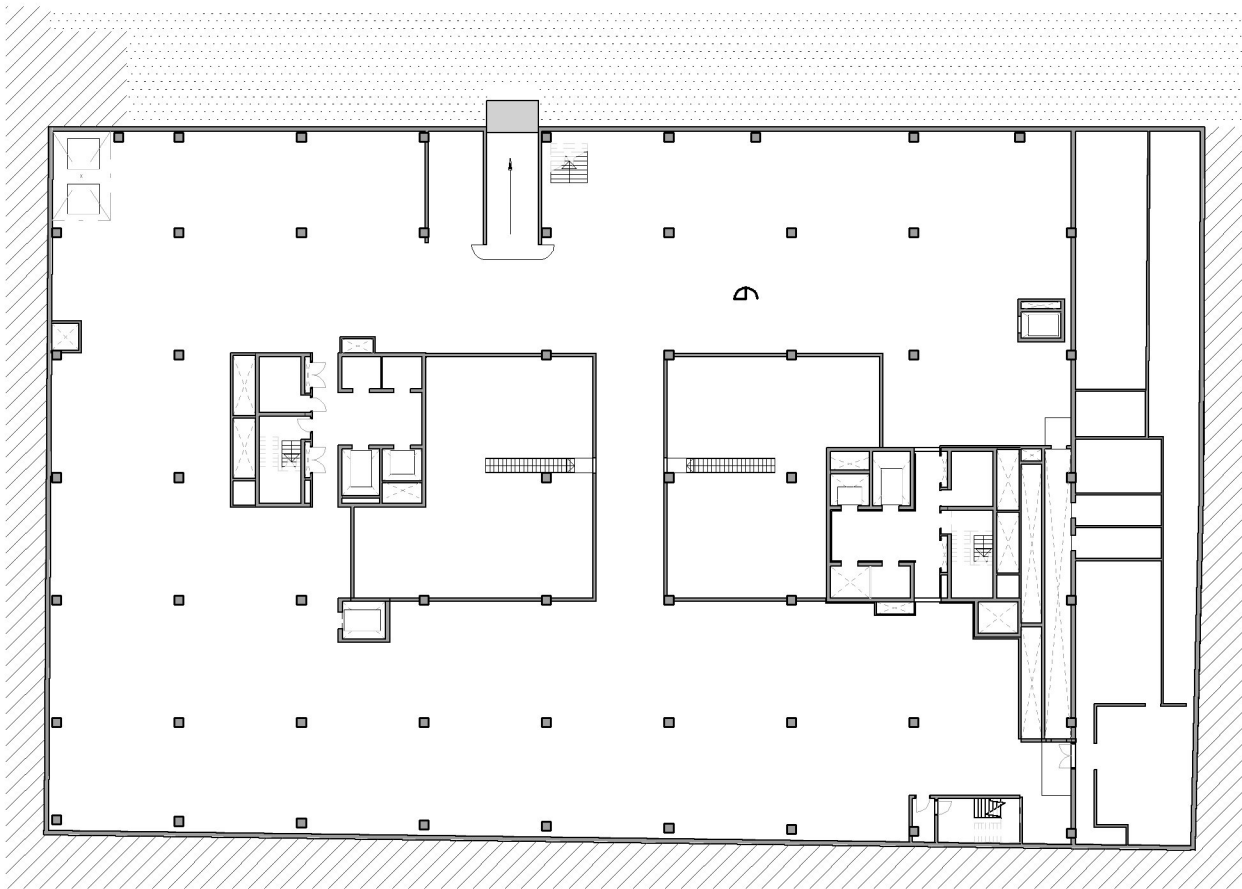
Plan /
Site / 1:500



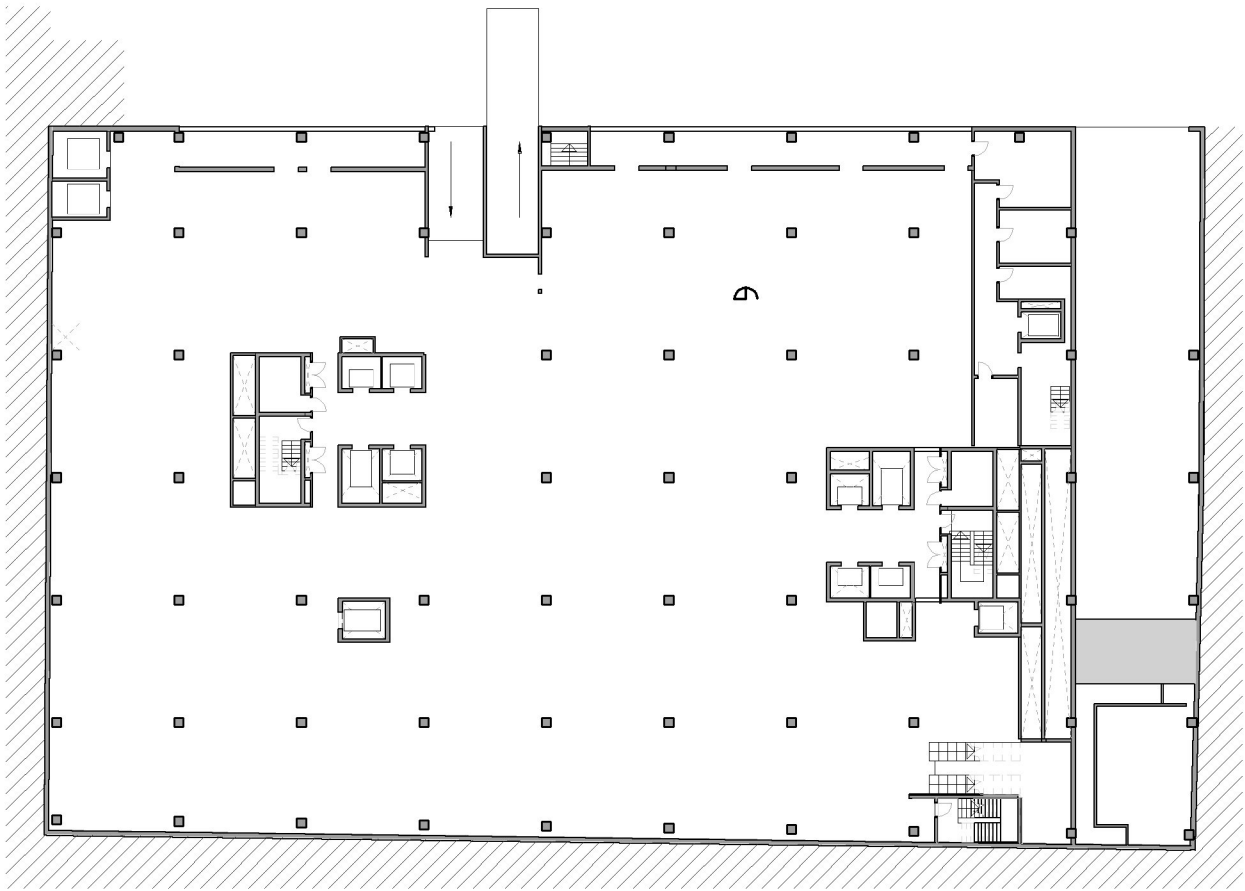
Plan / Kulvert / 1:500



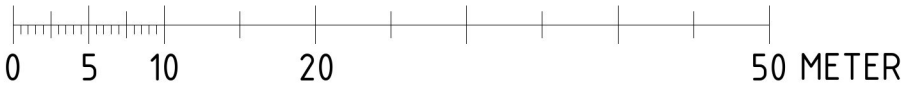
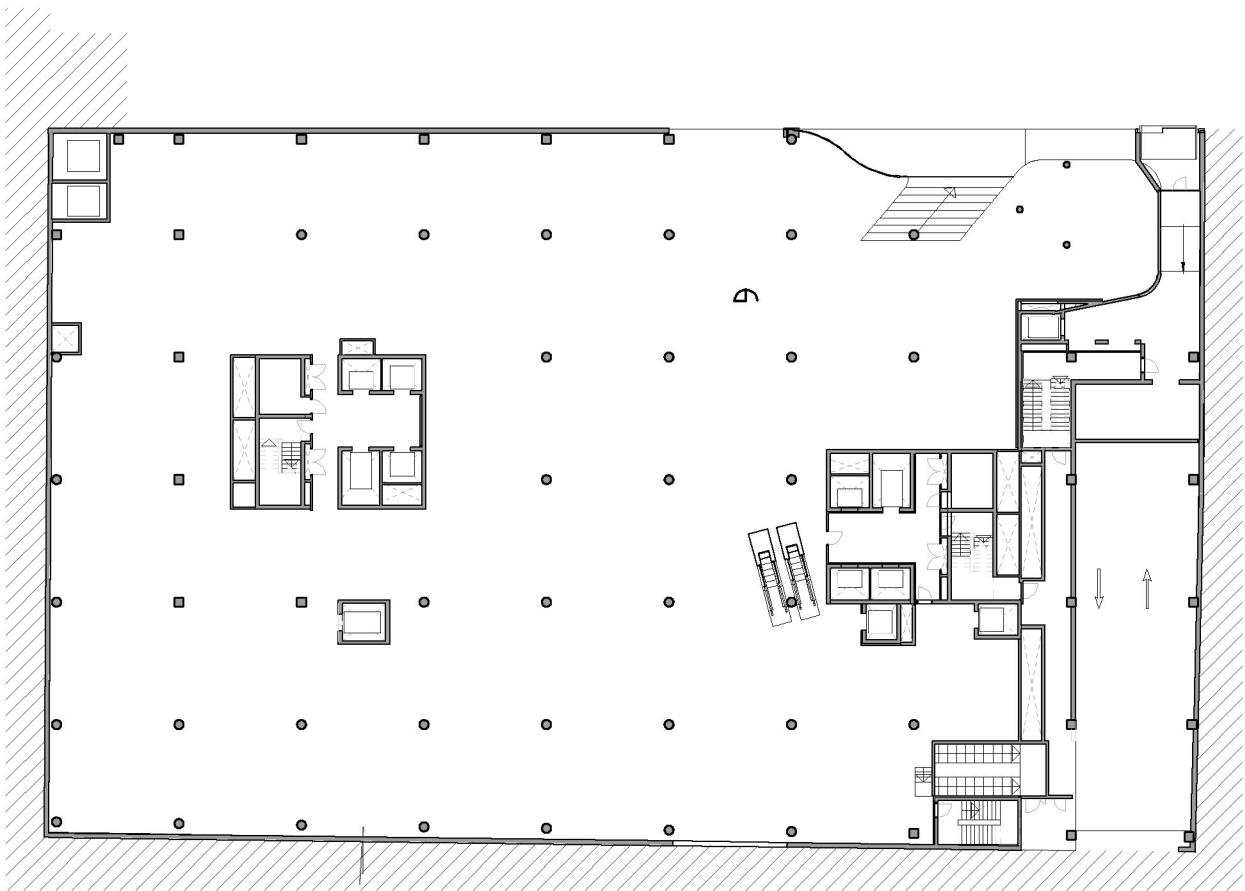
Plan /01 / 1:500



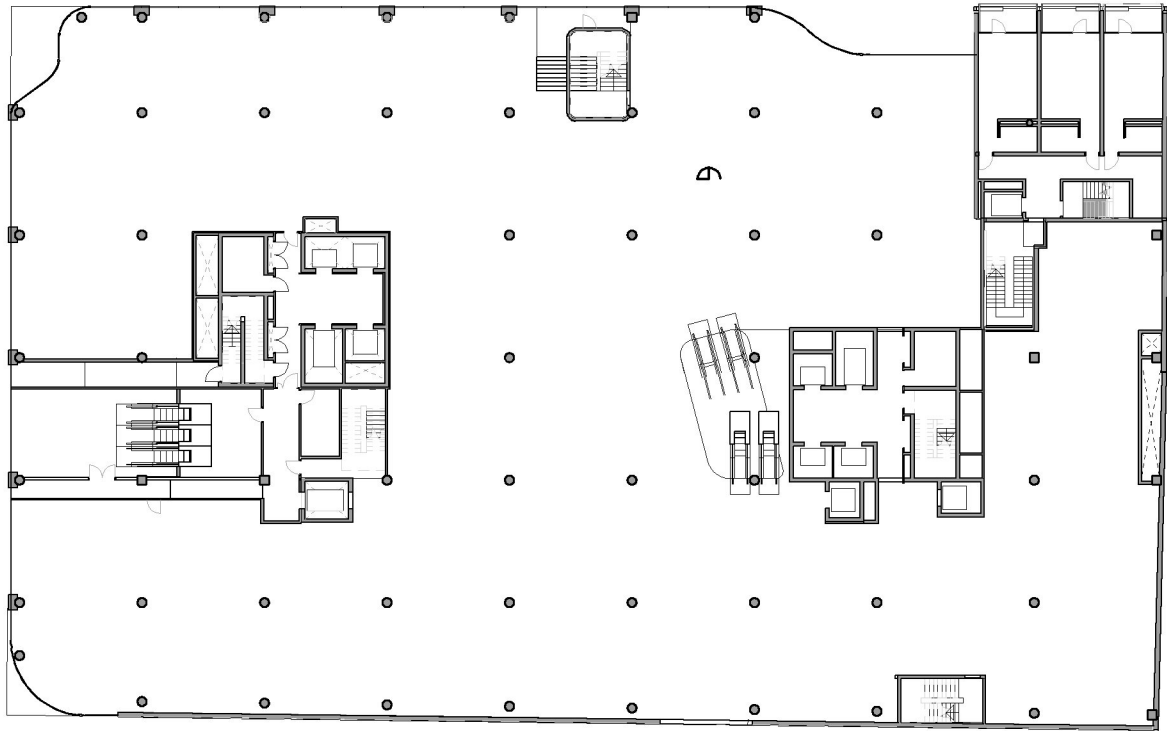
Plan / Level 02 / 1:500



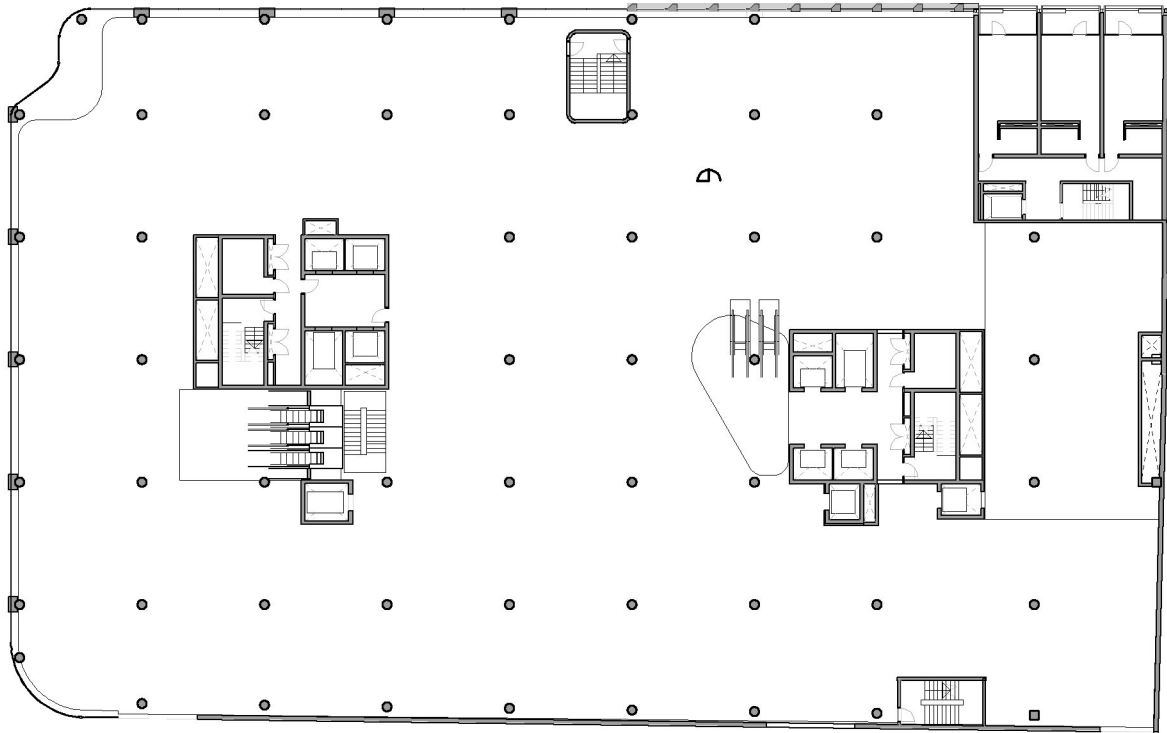
Plan / 03 / 1:500



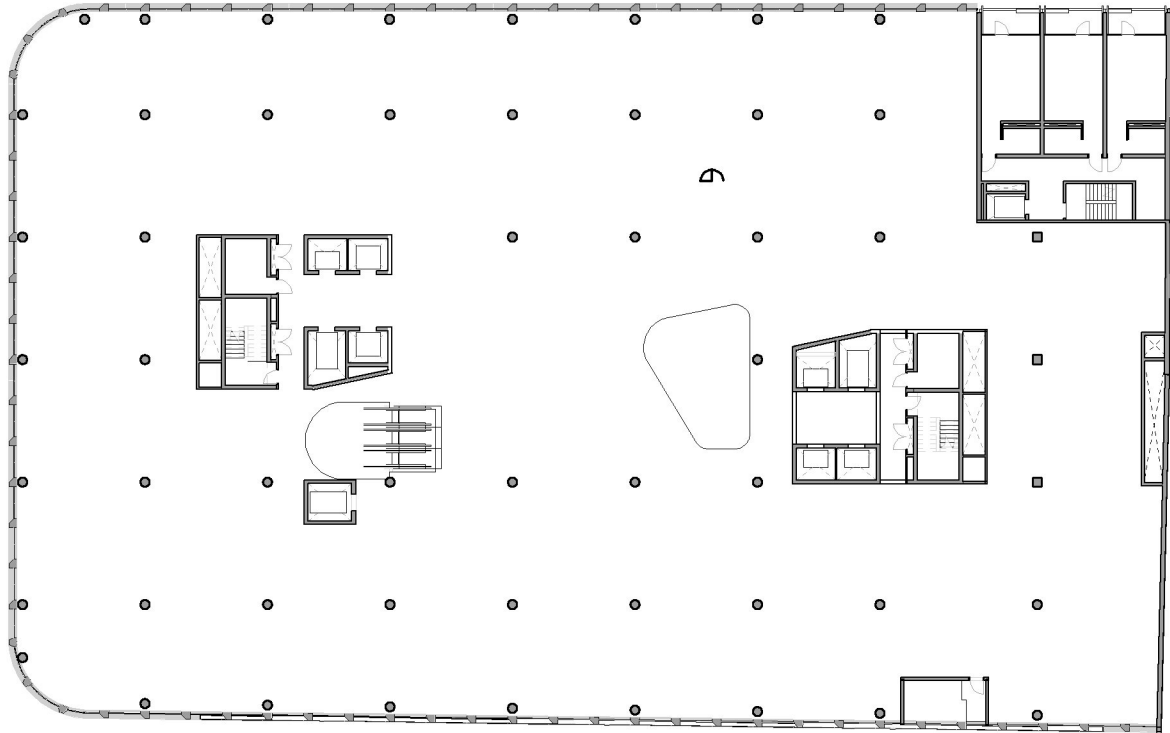
Plan / 04 / 1:500



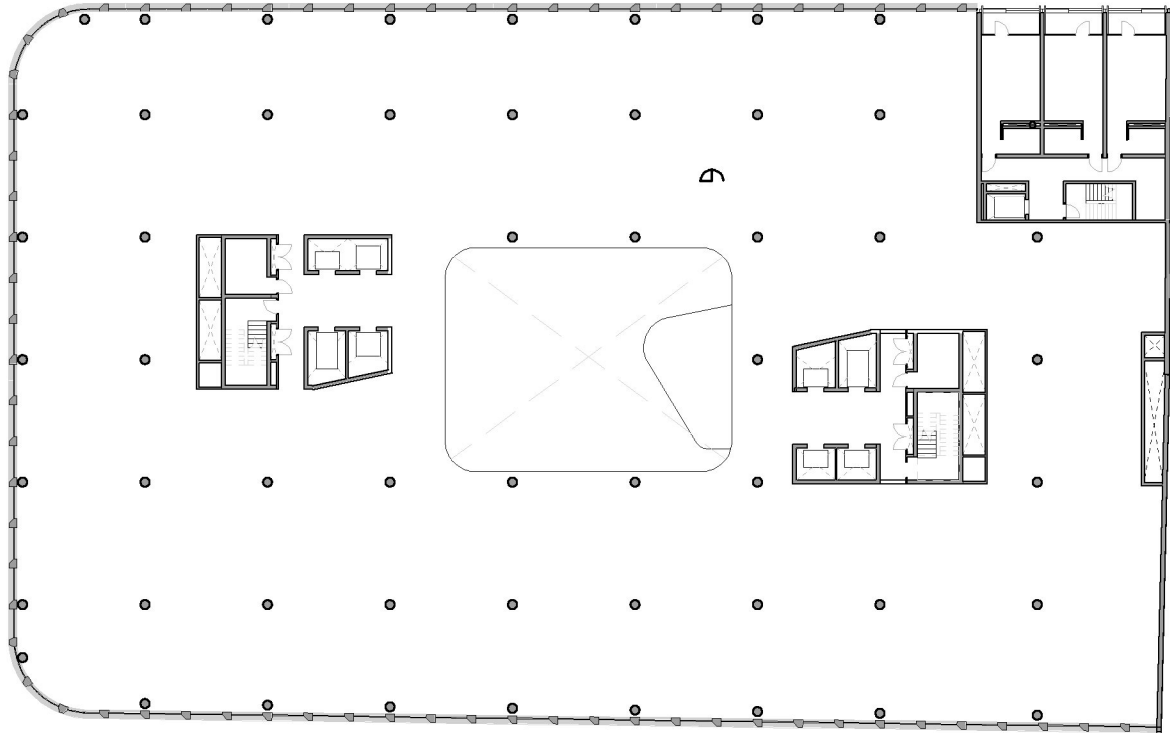
Plan / 05 / 1:500



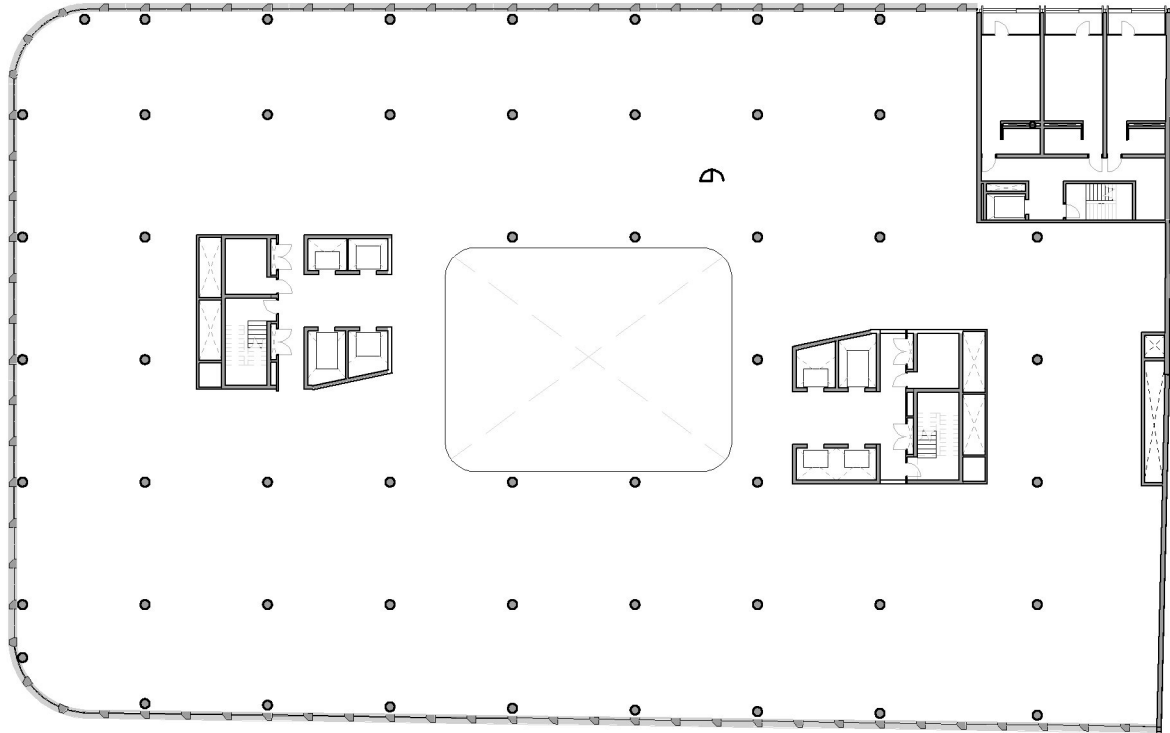
Plan / 06 / 1:500



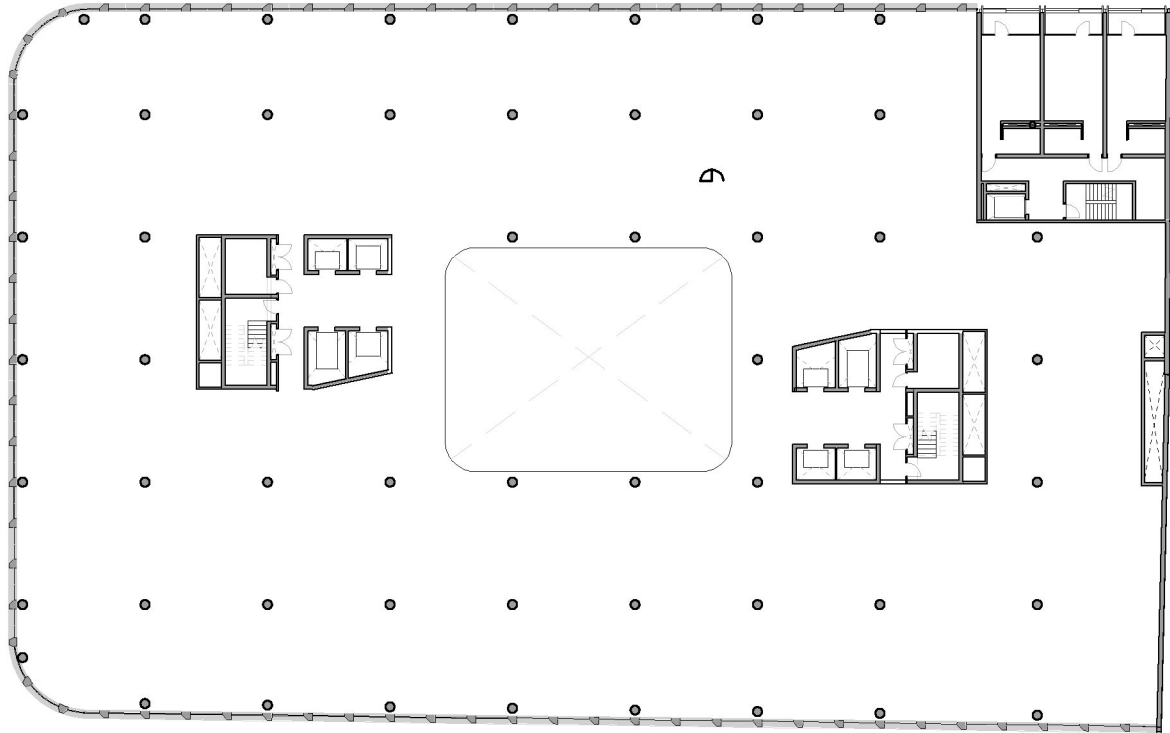
Plan / 07 / 1:500



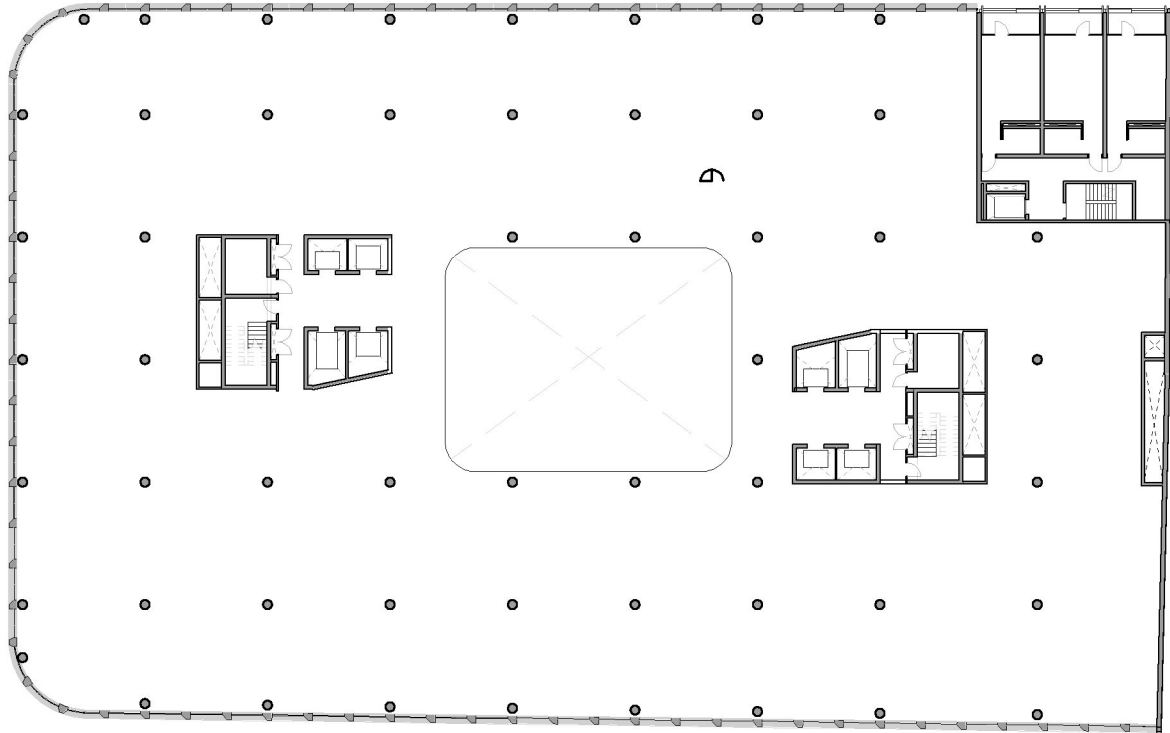
Plan / 08 / 1:500



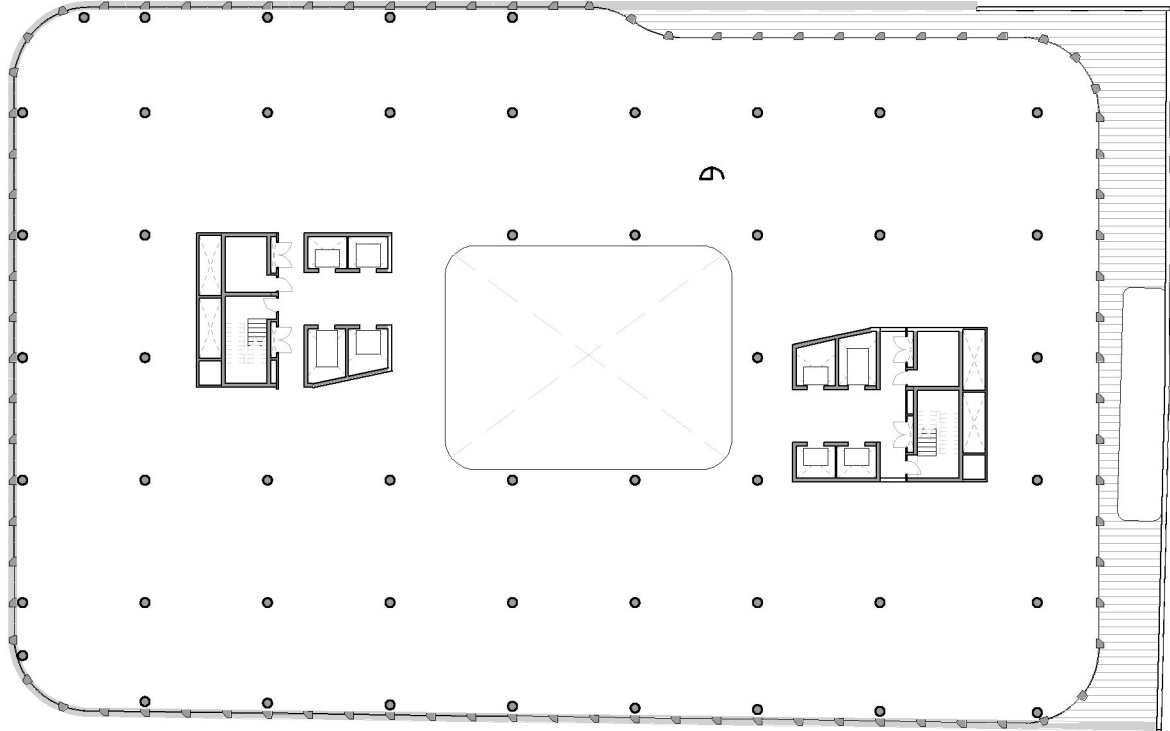
Plan / 09 / 1:500



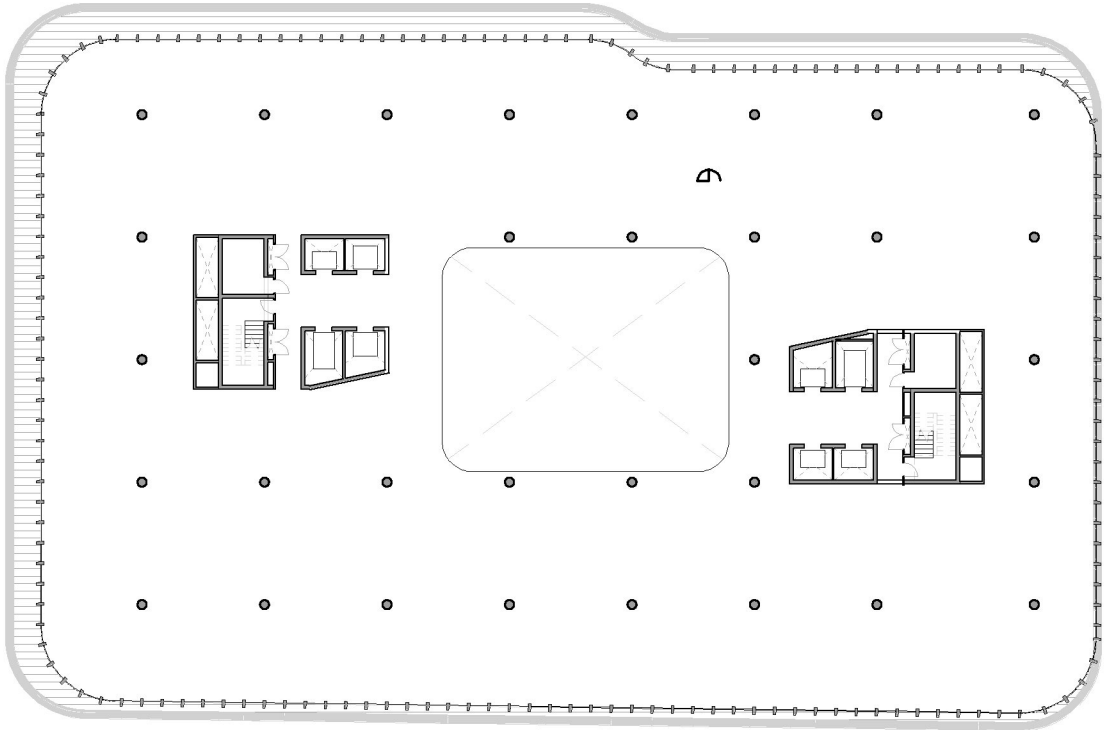
Plan / 10 / 1:500



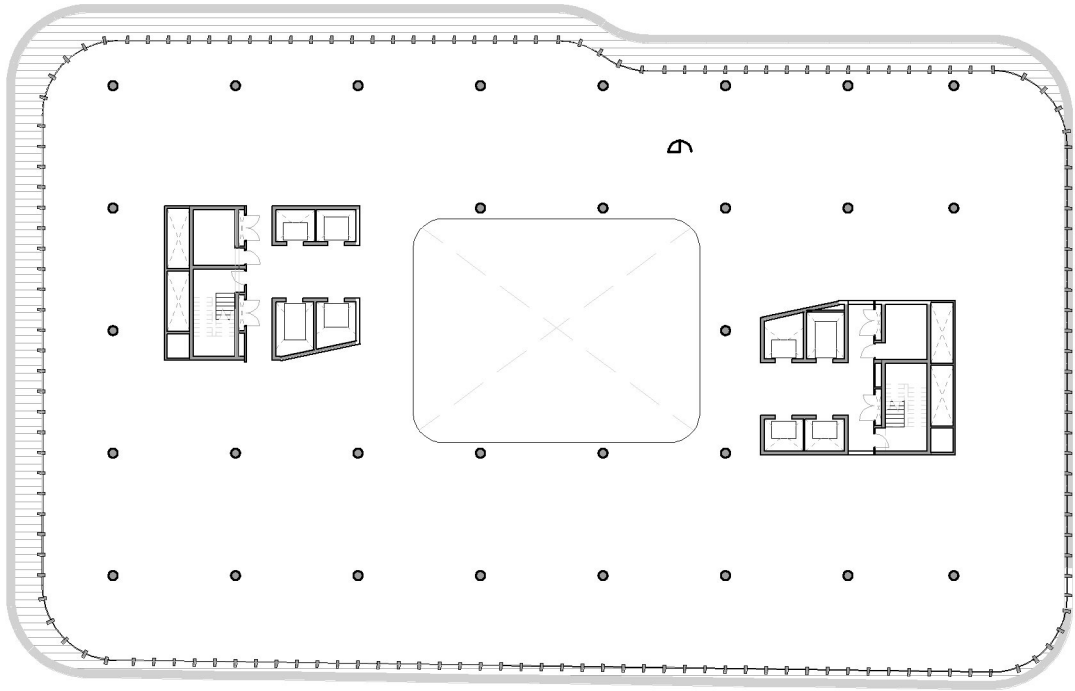
Plan / 11 / 1:500



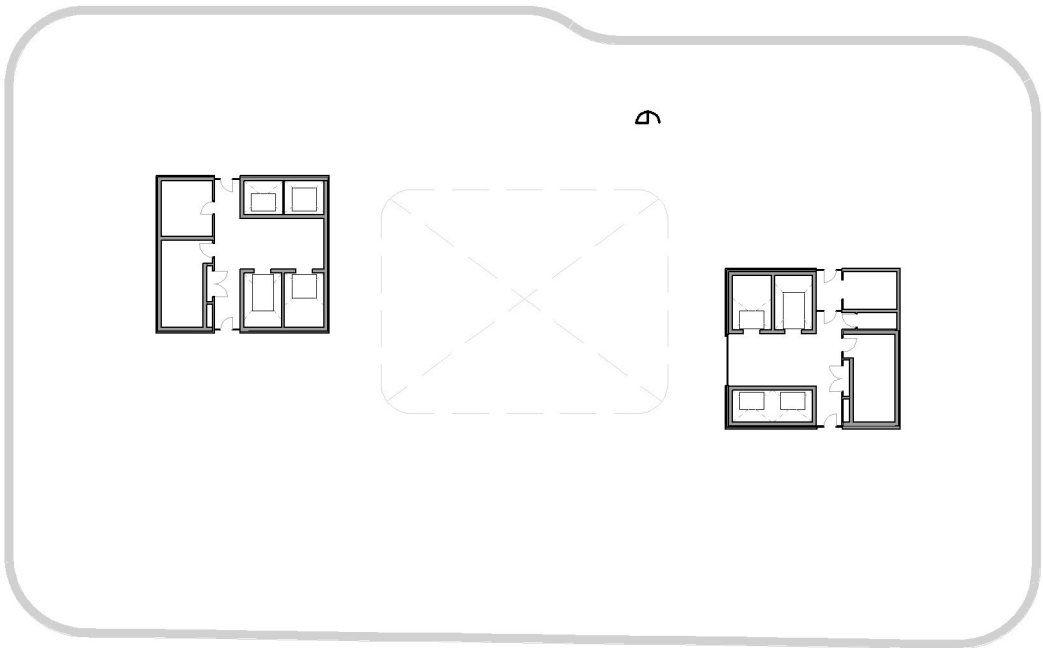
Plan / 12 / 1:500



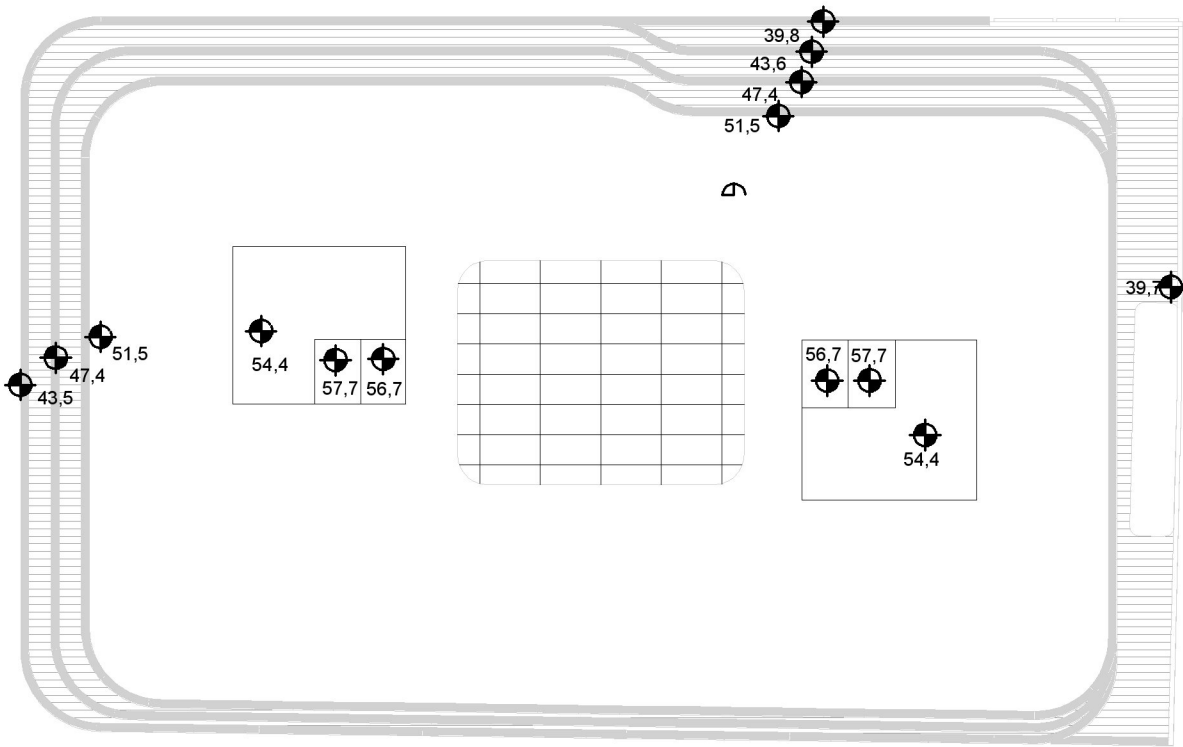
Plan / 13 / 1:500



Plan / 14 / 1:500

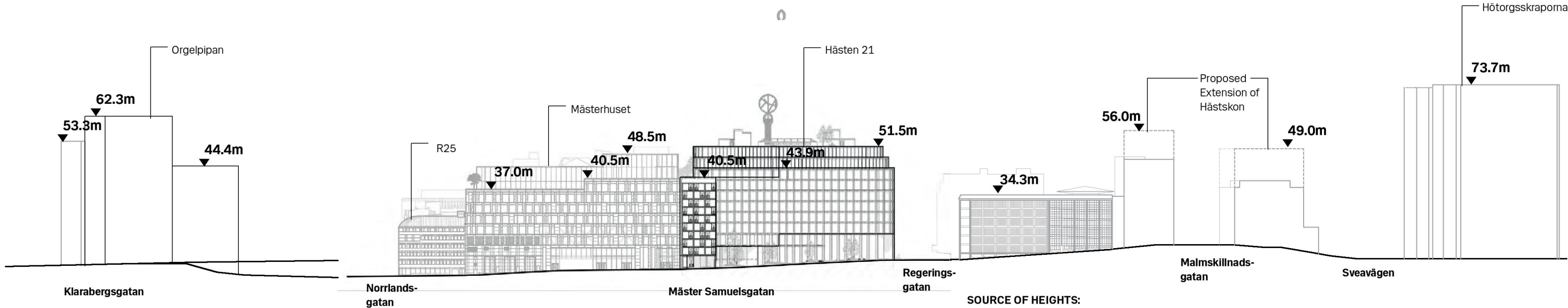


Plan / Takplan / 1:500



Massing Studies / Existing Skyline and Proposed Maximum Outline and Heights

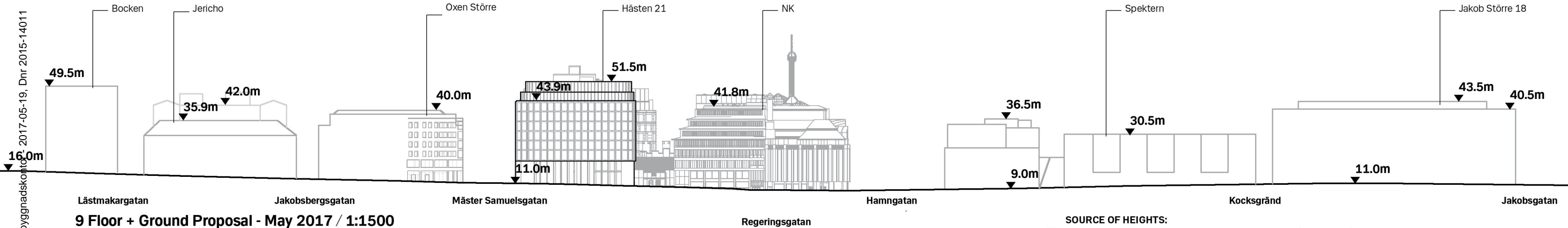
North Elevation:



9 Floor + Ground Proposal - May 2017 / 1:1500
Height Coordination: RH2000

SOURCE OF HEIGHTS:	
1 Orgelpipan:	DP 2010-18583-54 / Detaljplan / Orgelpipan 6 m.6.
2 Mästerhuset:	DP 2010-10515-54 / Detaljplan / kv Hästen
4 Parking House Hästskon:	Hans Asplund Arkitekt / 054 Kv. Hästskon Stormhätten / Fasadsektioner U5
5 Hästskon Extension:	Source: DP 2013-17586-54 / Detaljplan / Hästskon 12 m fl
6 Hötorgsskraporna:	Stockholm City Website / 12.Feb.2015 / http://data.stockholm.se/List/Data/Kuber/ / Norrmalm

West Elevation:

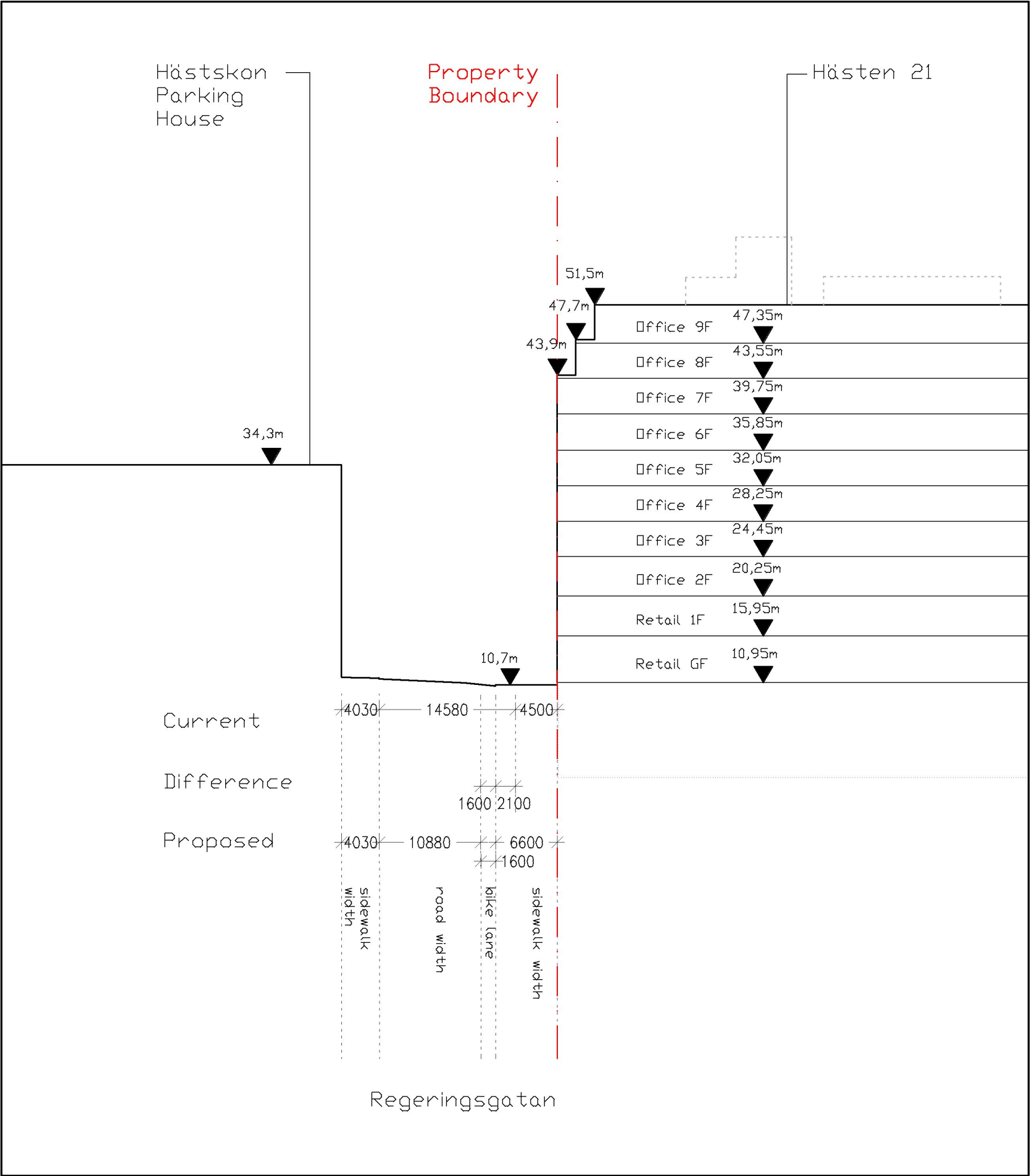
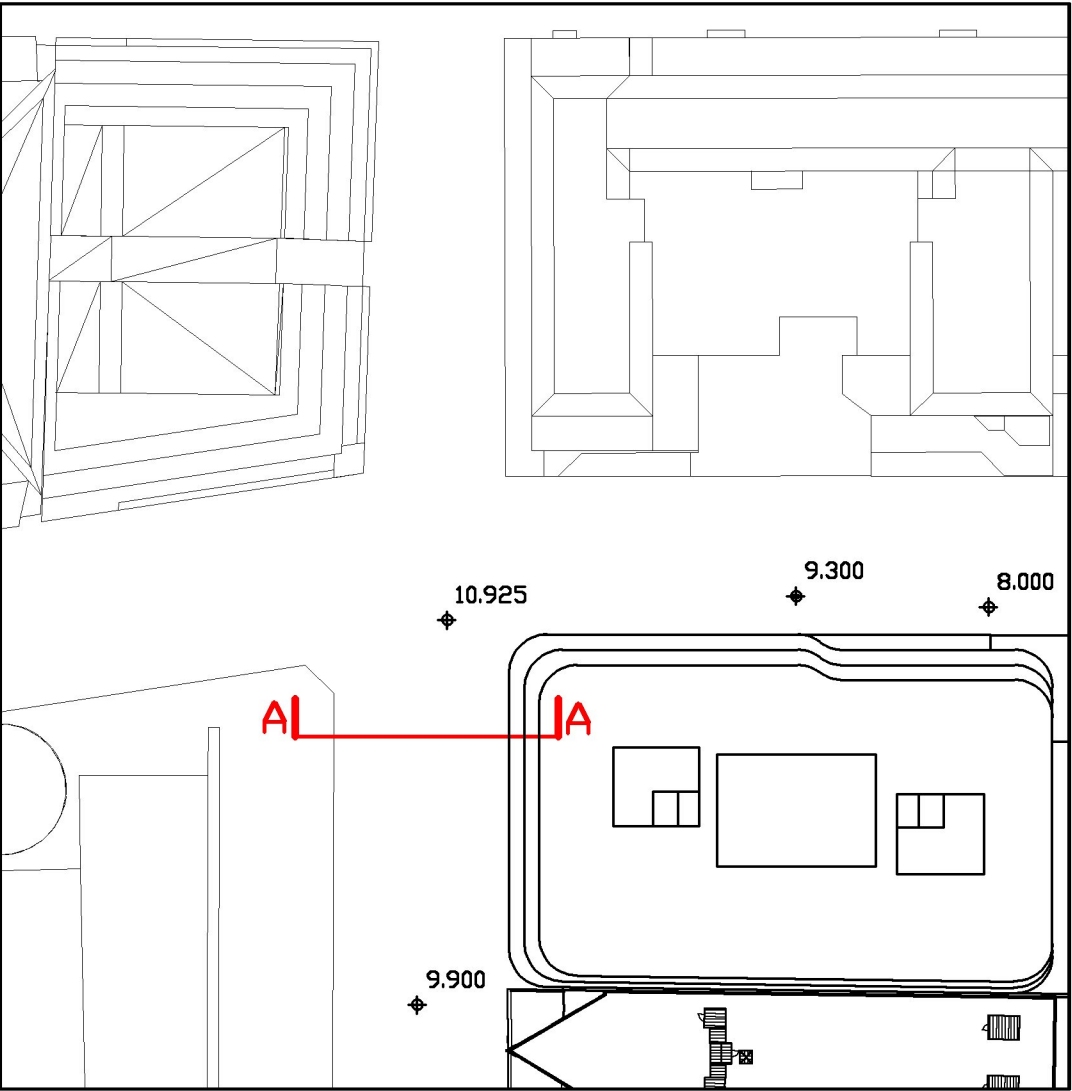


9 Floor + Ground Proposal - May 2017 / 1:1500
Height Coordination: RH2000

SOURCE OF HEIGHTS:	
7 Bocken:	DP 2007-36021-54 / Detaljplan / kv Bocken
8 Jericho:	DP 1998-08491-54 / Detaljplan / kv Jericho
10 Oxen Större:	DP 2008-01903-54 / Detaljplan / Oxen Större 21
11 NK:	NewCAD AB / Revit Model / 20160503
12 Trollhättan 30:	DP 2013-19825-54 / Detaljplan / Trollhättan 30 m fl
13 Spektern:	Pl.7275 / Ändrad stadsplan / kv Spektern mm
14 Trollhättan 31:	DP 2012-13546-54 / Detaljplan / Trollhättan 29, 31-33, Skansen 25 m m
15 Jakob Större:	DP 2005-20686-54 / Detaljplan / Jakob Större 18

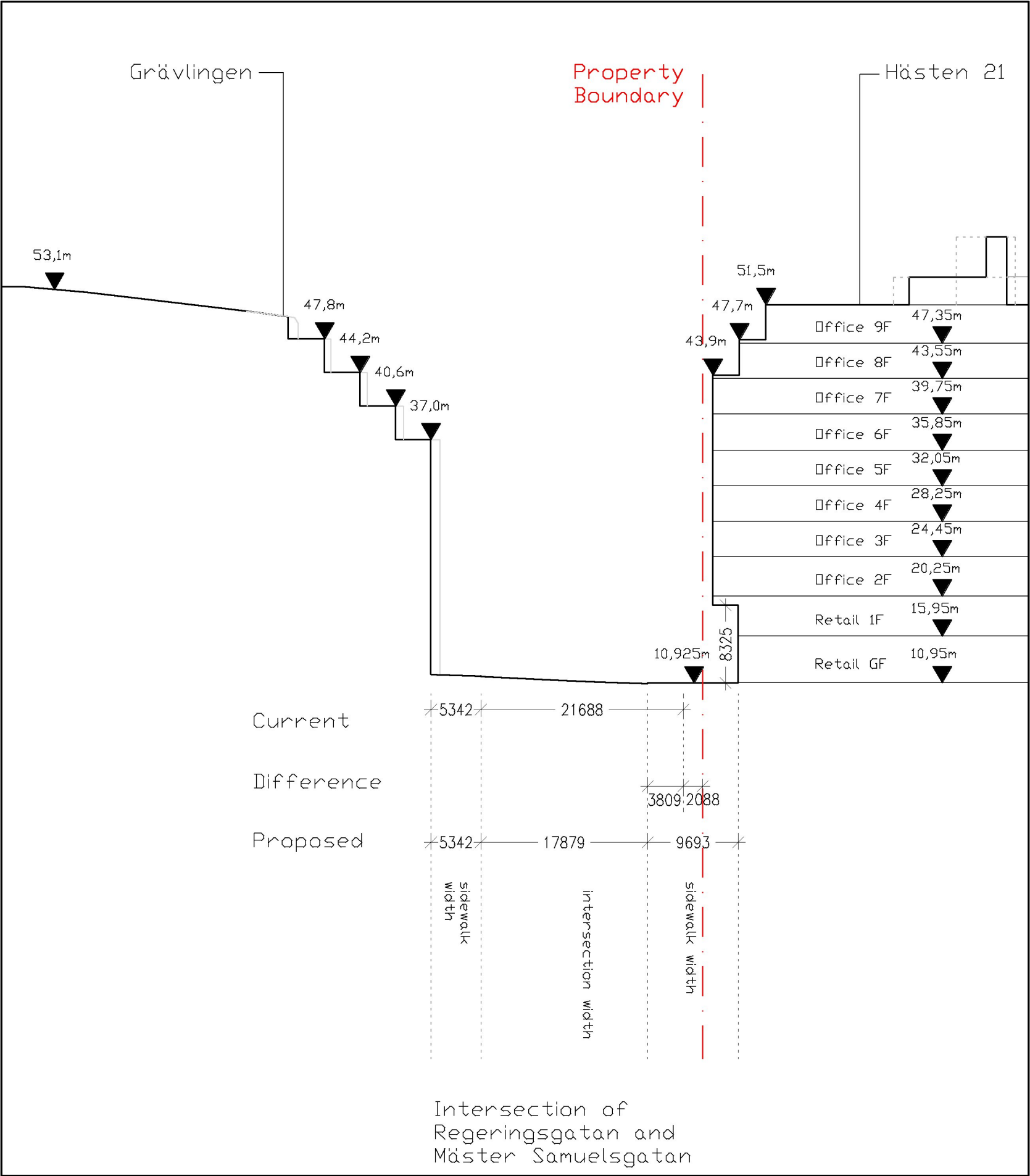
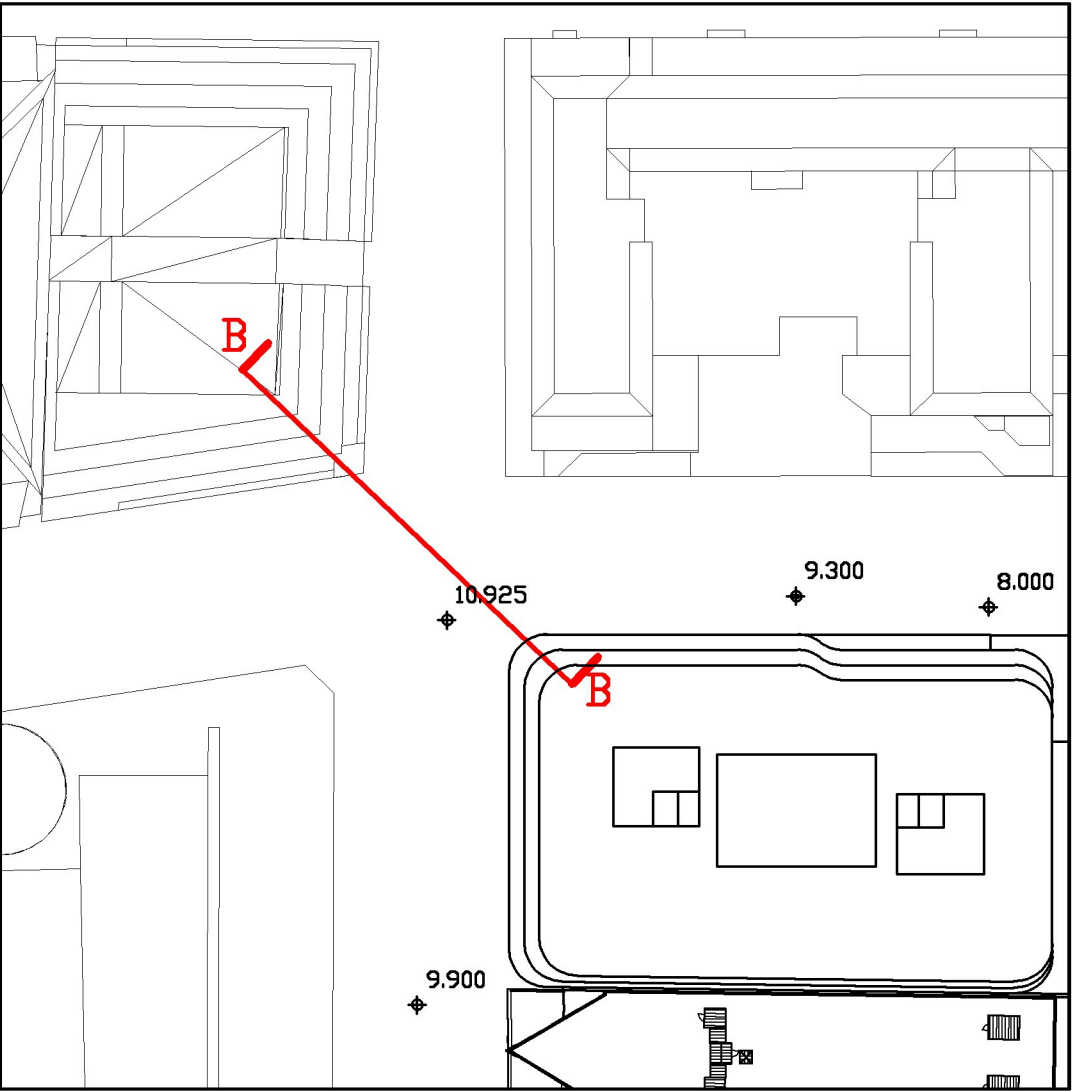
Street Section AA /

Through Hästskon Parking House / 1:500



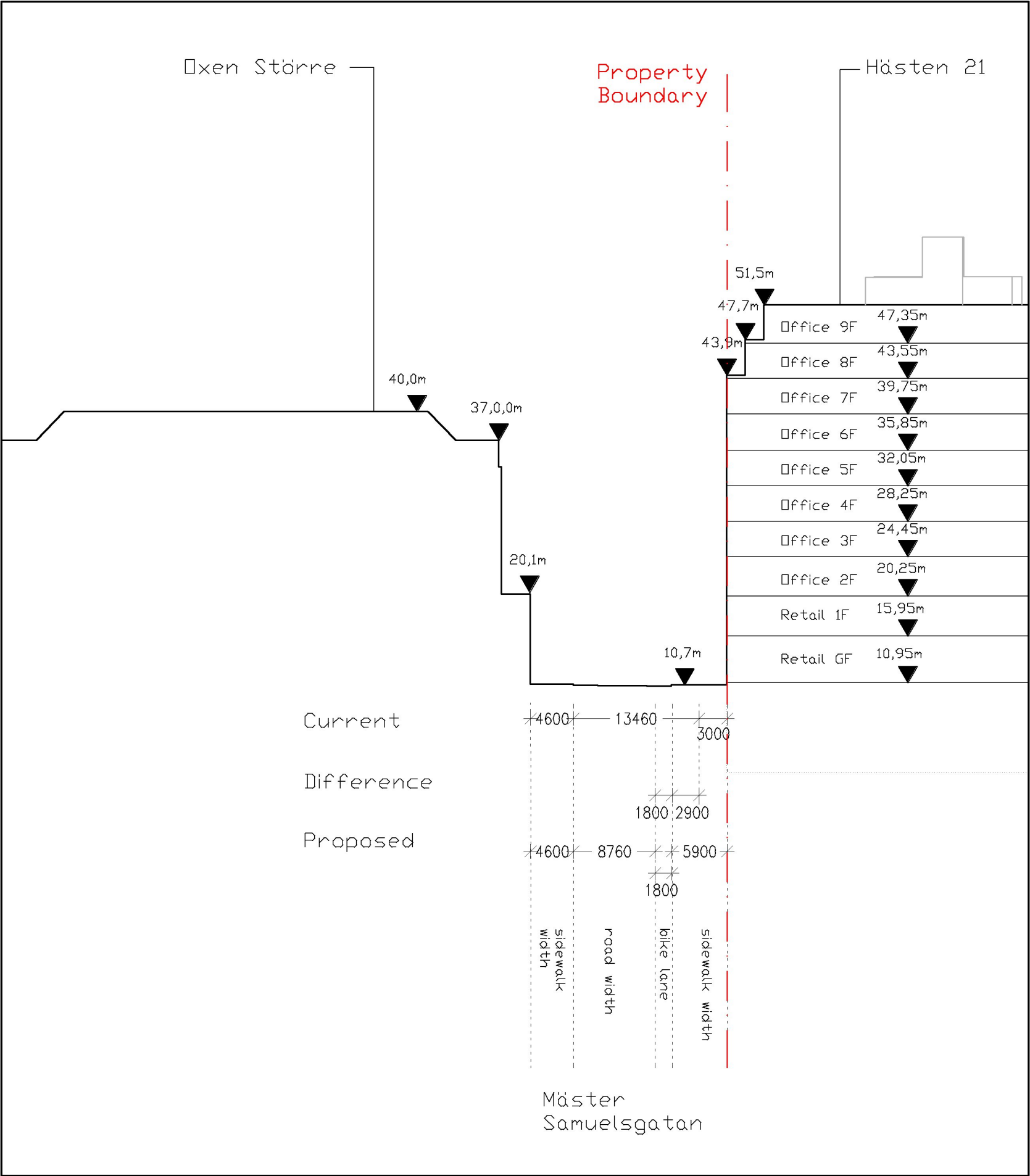
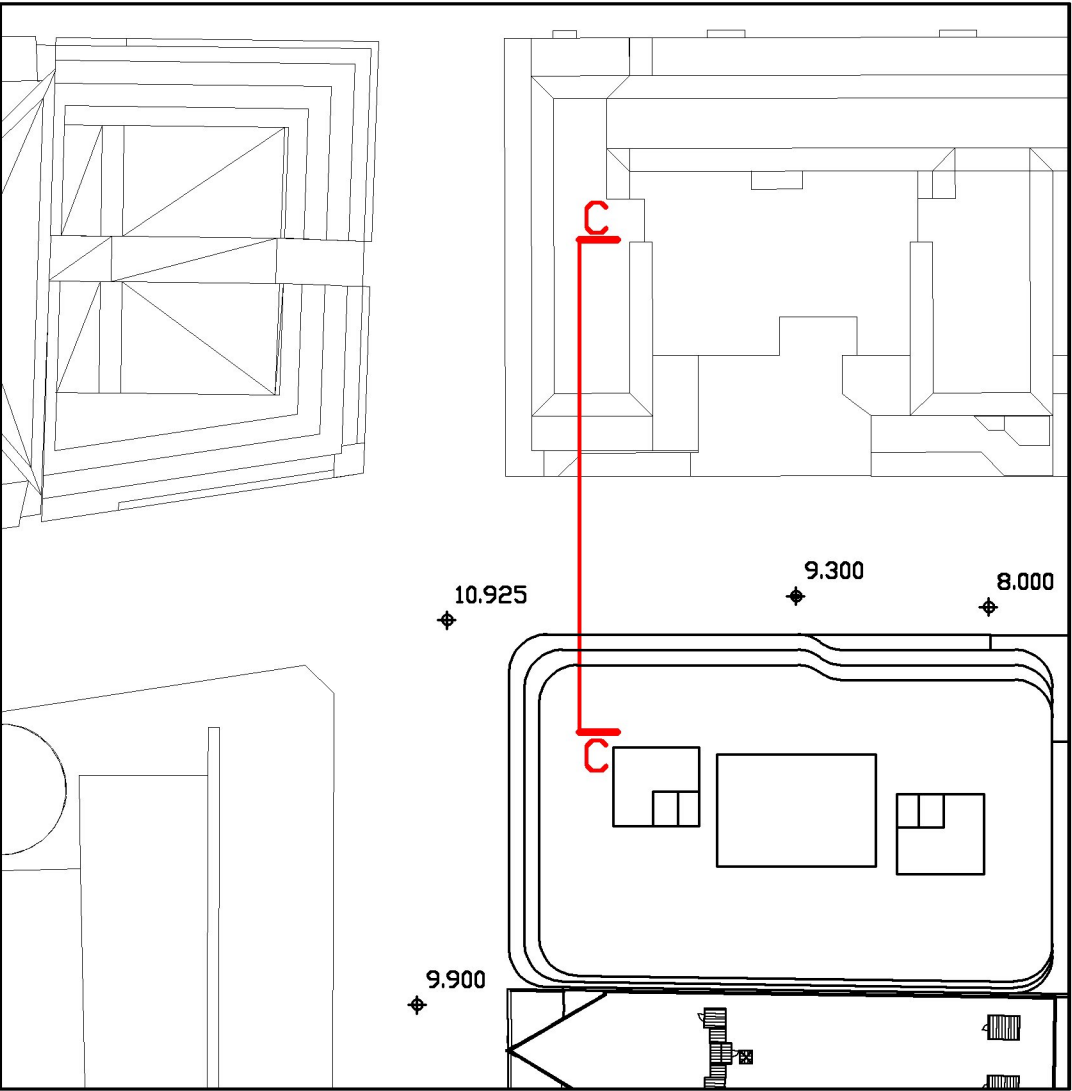
Street Section BB /

Through Grävlingen / 1:500

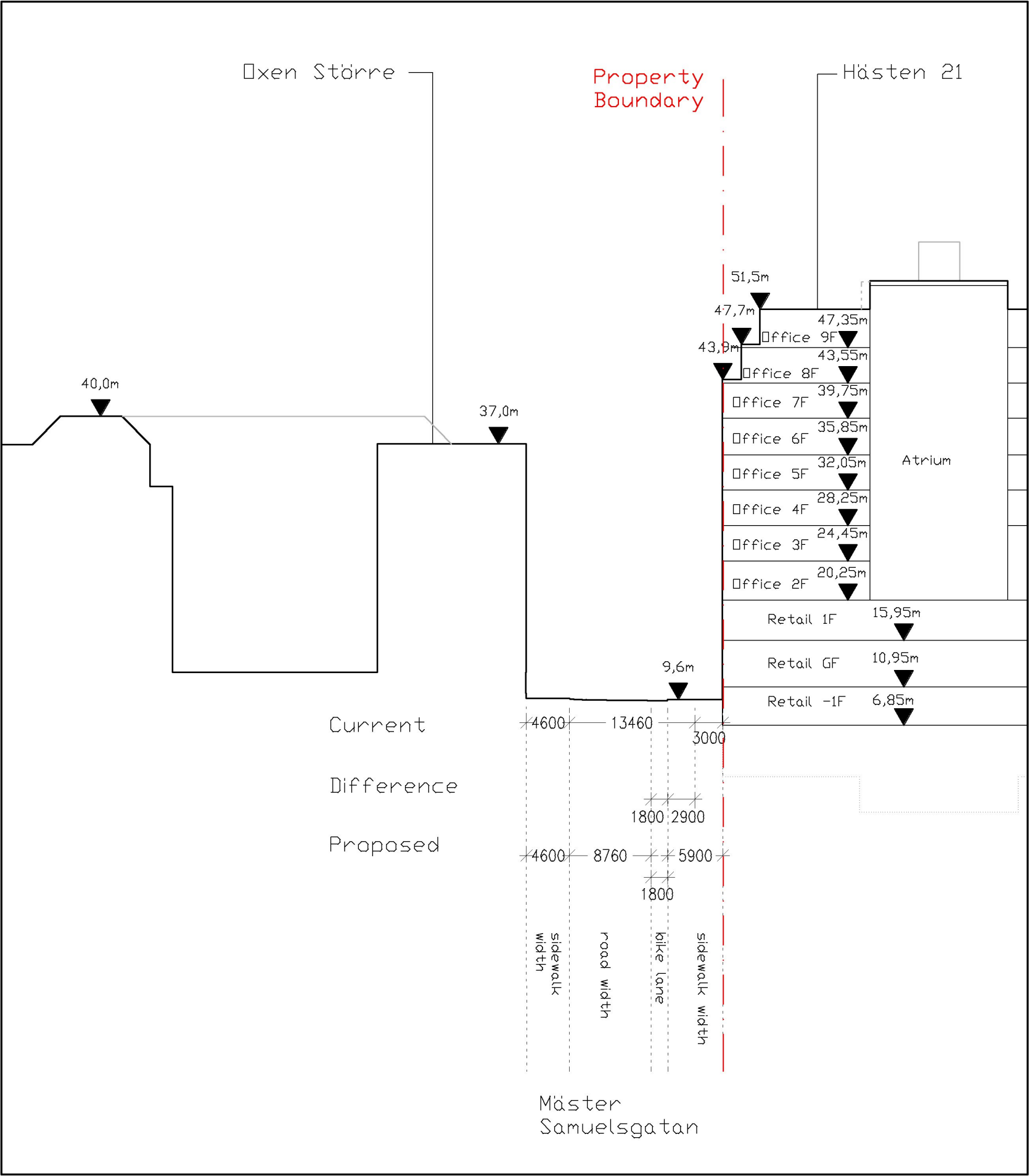
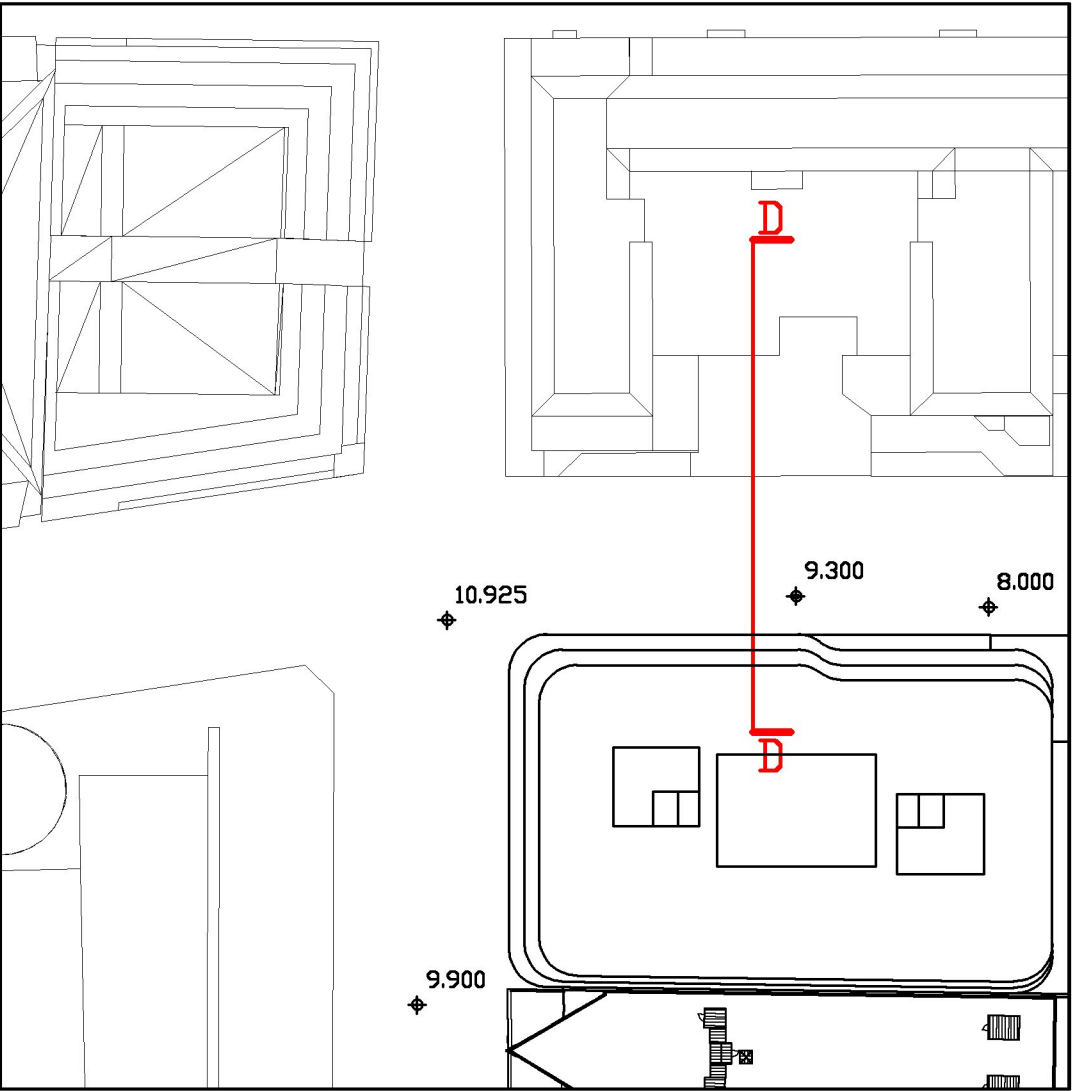


Street Section CC /

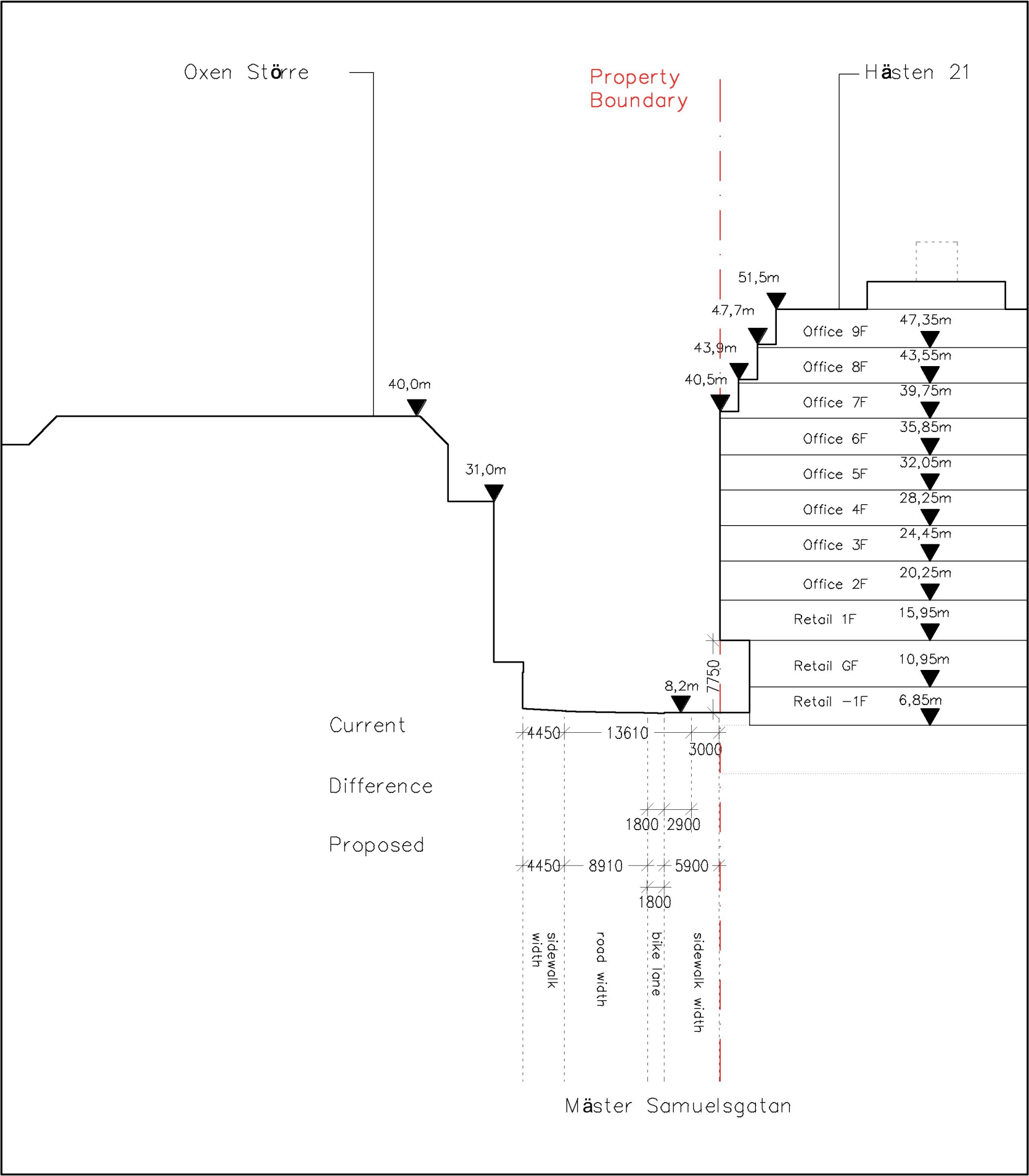
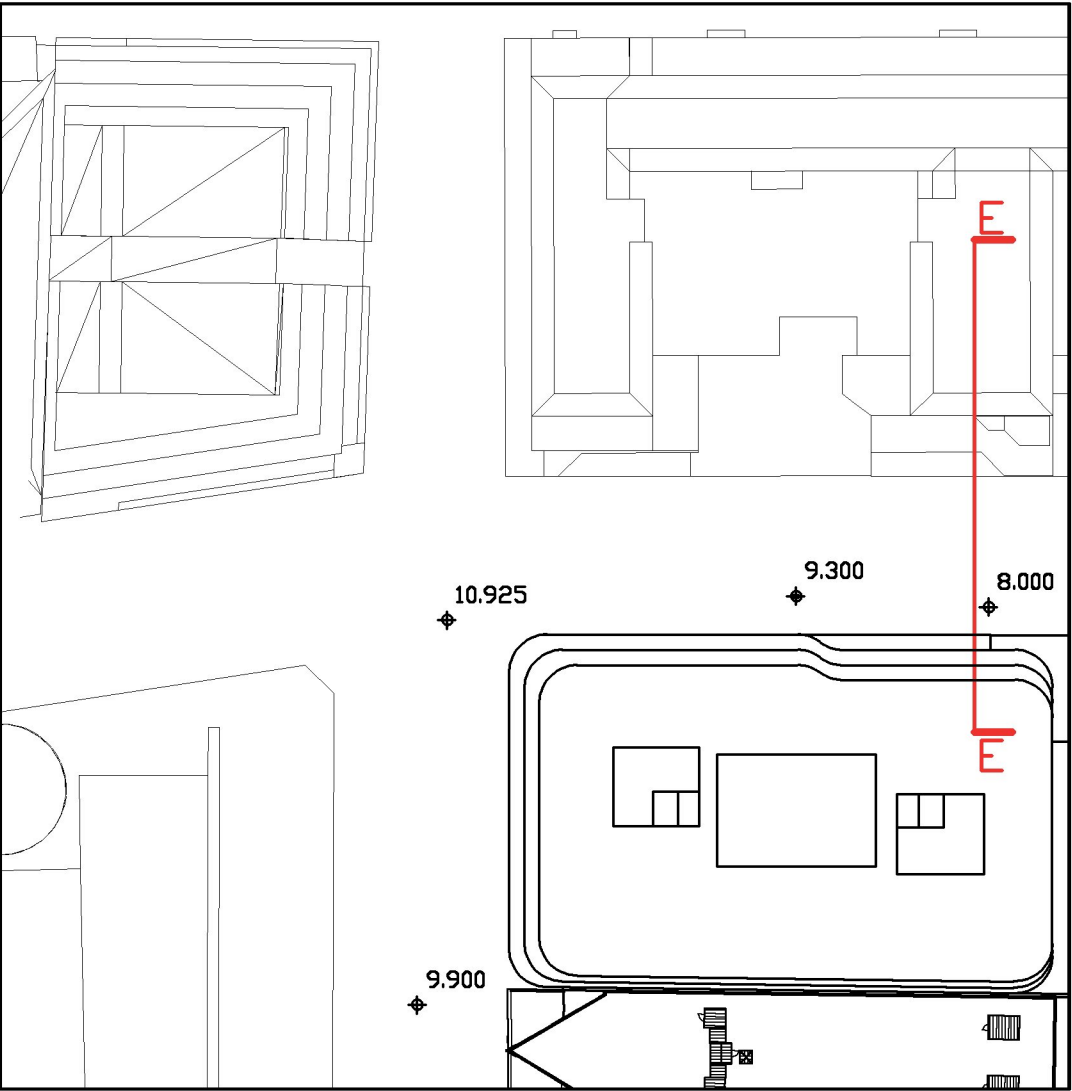
Through Oxen Större / 1:500



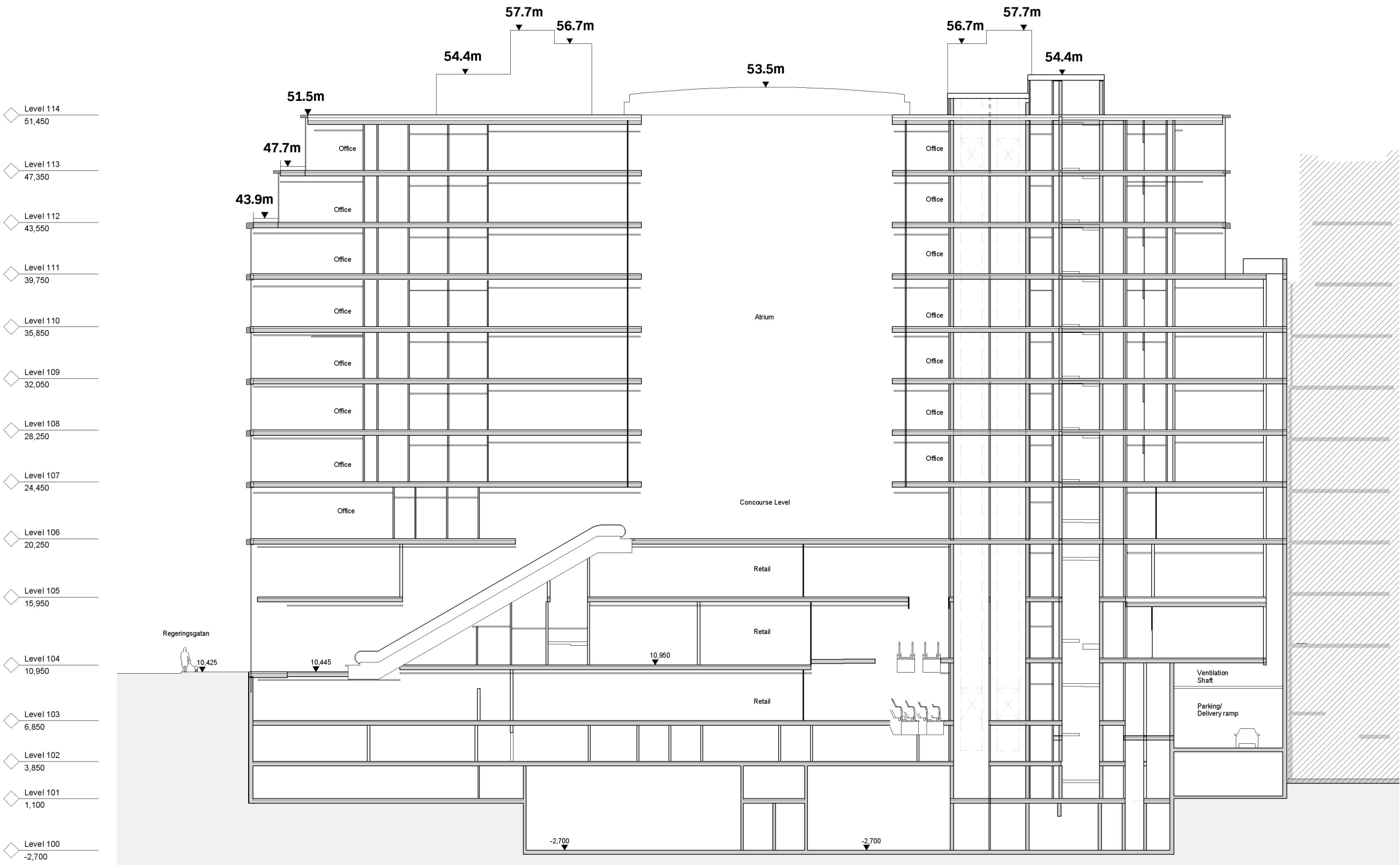
Street Section DD /
Through Oxen Större / 1:500

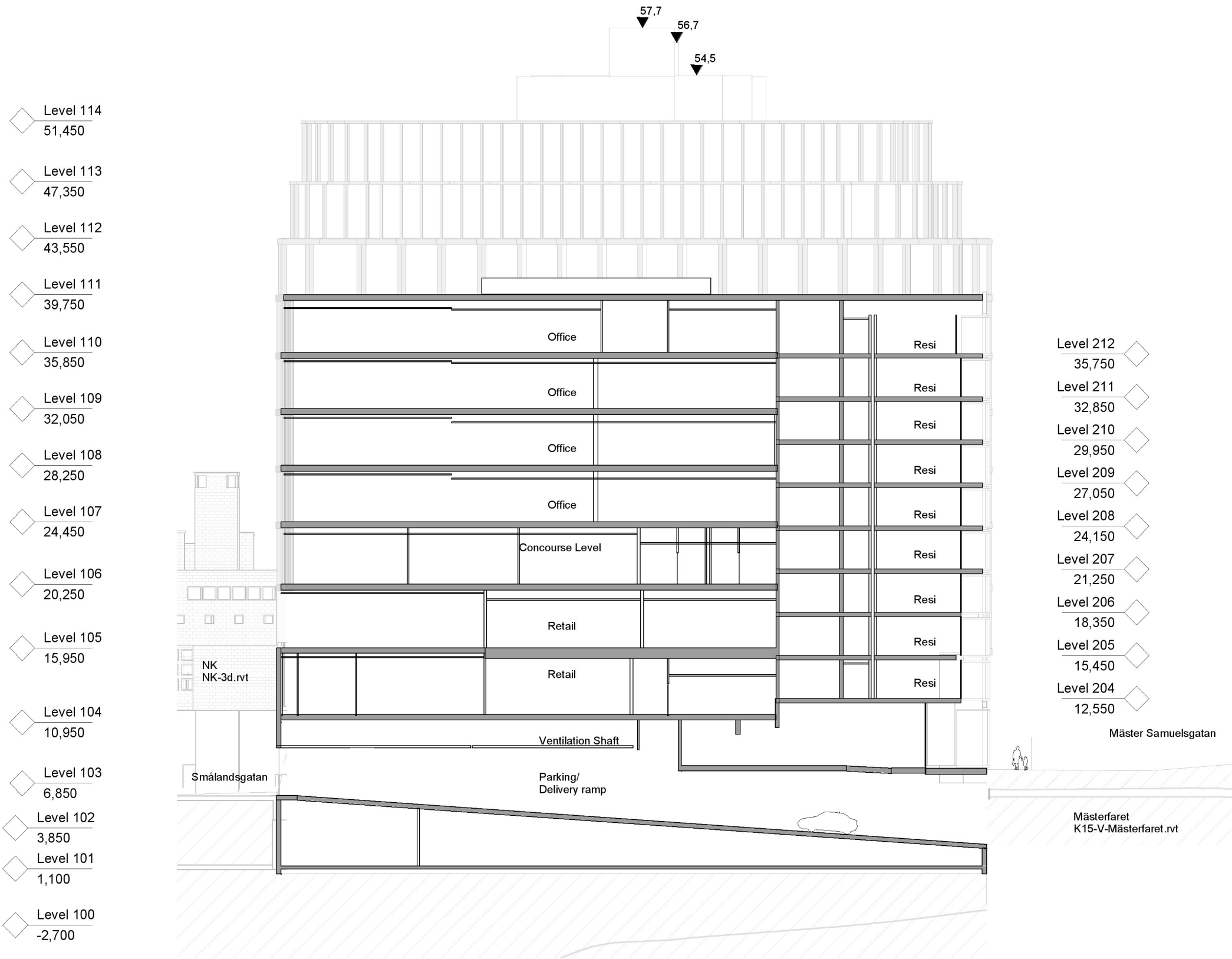


Street Section EE /
Through Oxen Större / 1:500

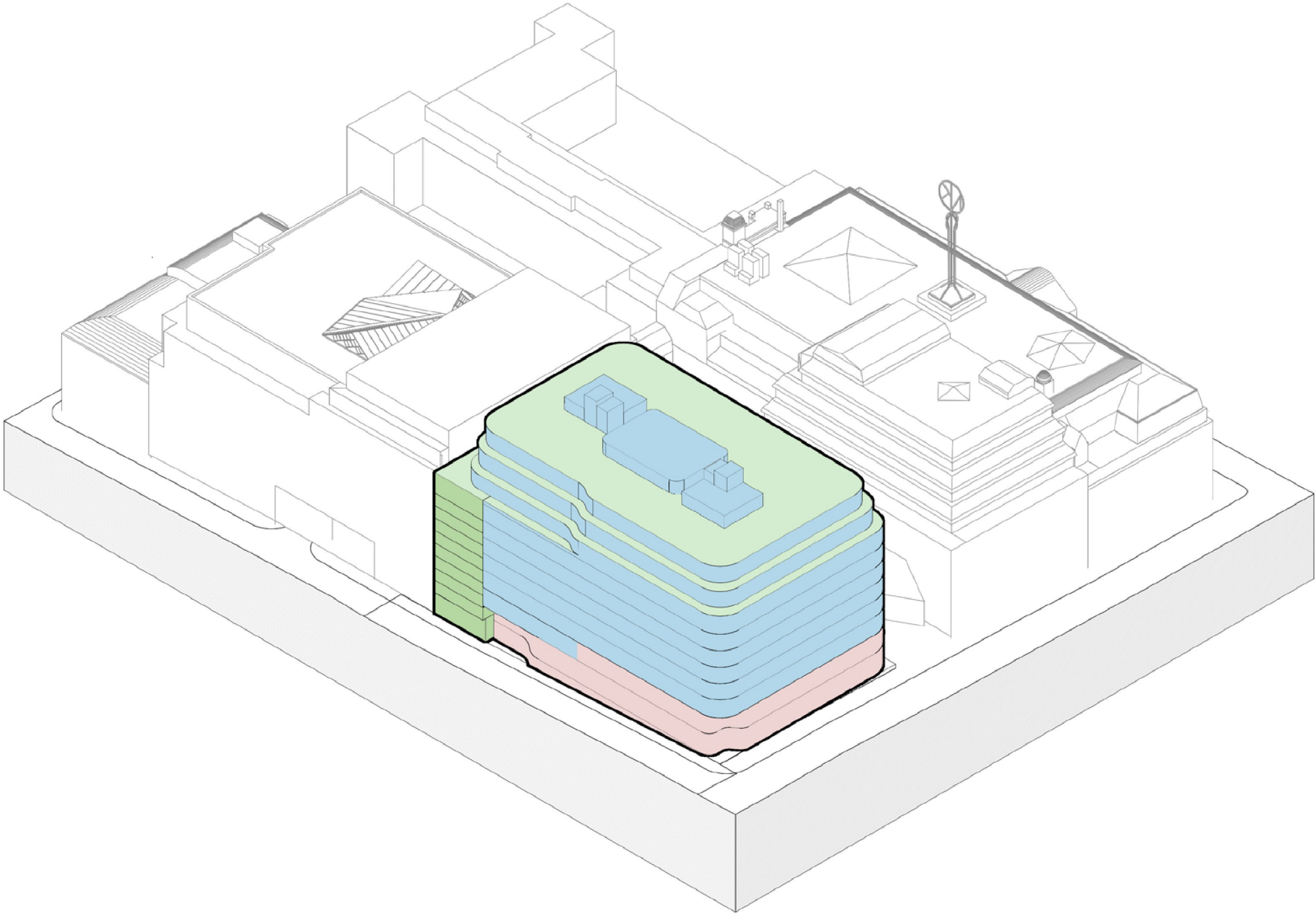


R42 Section /
Around NE Corner / 1:300





Axonometric of Hästen Block



- Main
- Base
- Residential
- Roof