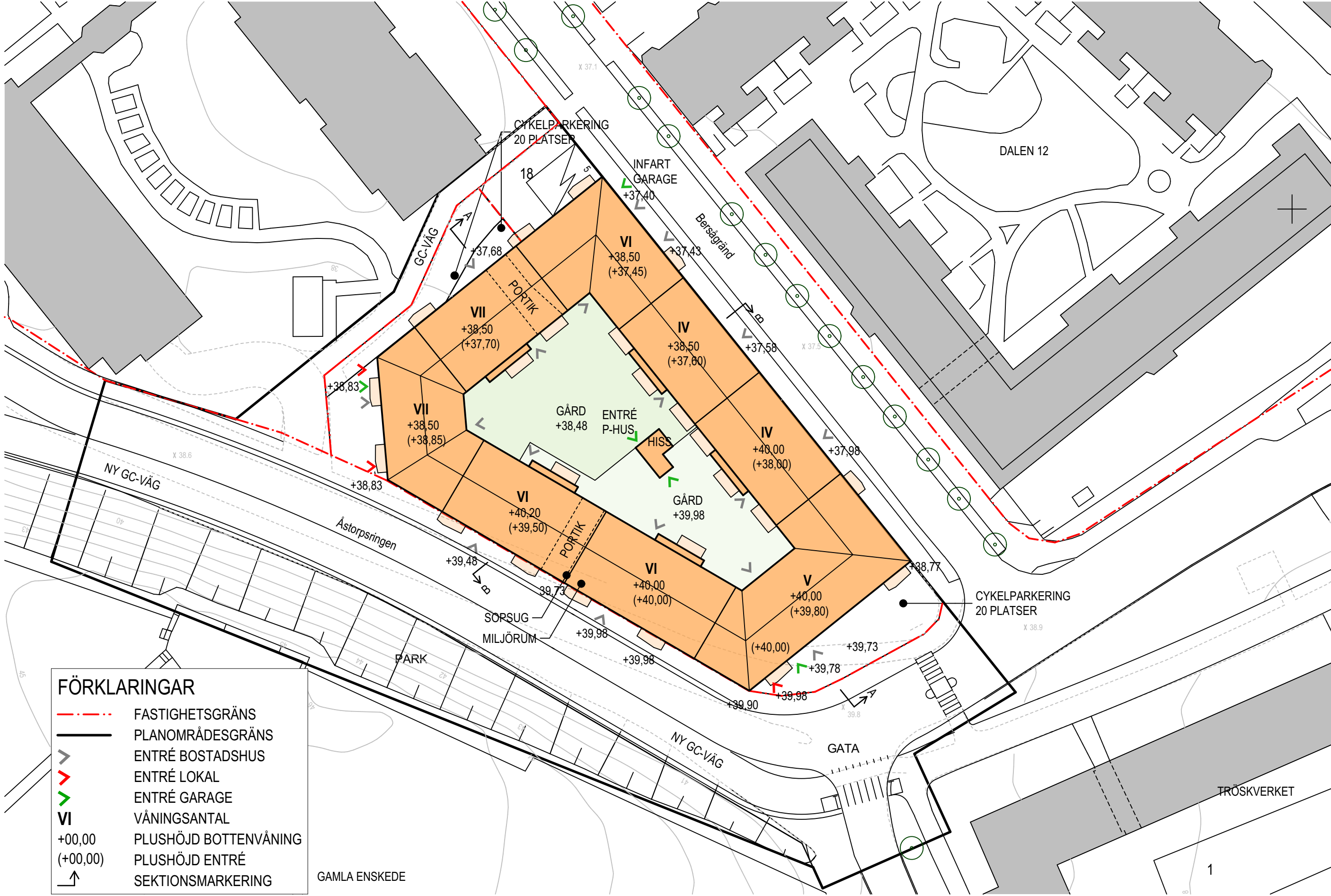


# DALEN 21 GRANSKNINGSHANDLING 180507





Elevation mot Bersågränd



Elevation mot Micasa

0 1 2 3 4 5M SKALA 1:100





Elevation mot Årstorpsringen

0 1 2 3 4 5M SKALA 1:100





Elevation mot söder, Åstorpsringen



Elevation mot väster, Åstorpsringen



Elevation mot nordväst, mot Micasa



Elevation mot nordöst, Bersågränd



Elevation mot sydöst, Åstorpsringen

0 5 10 15 20 30M SKALA 1:500



Elevation mot nordöst, Bersågränd















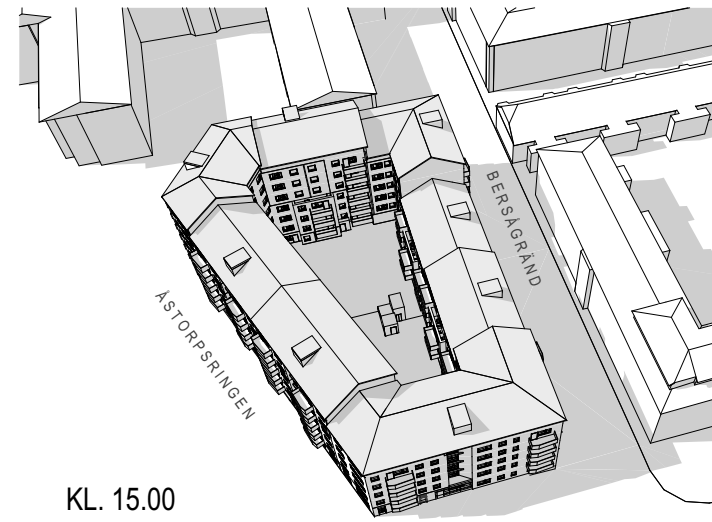
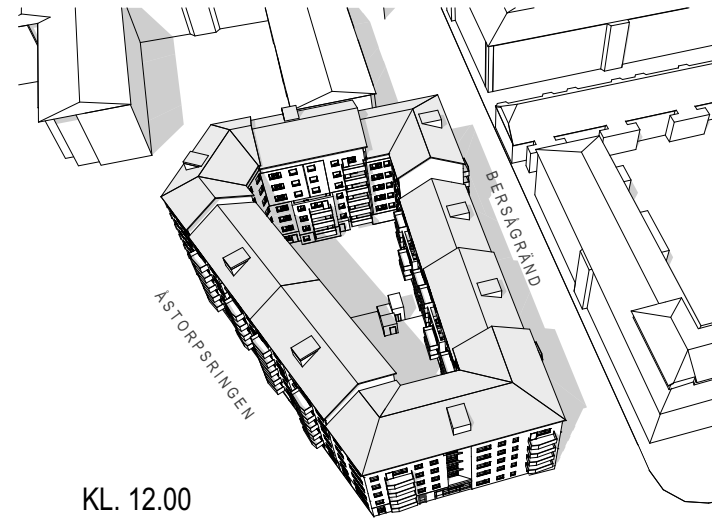
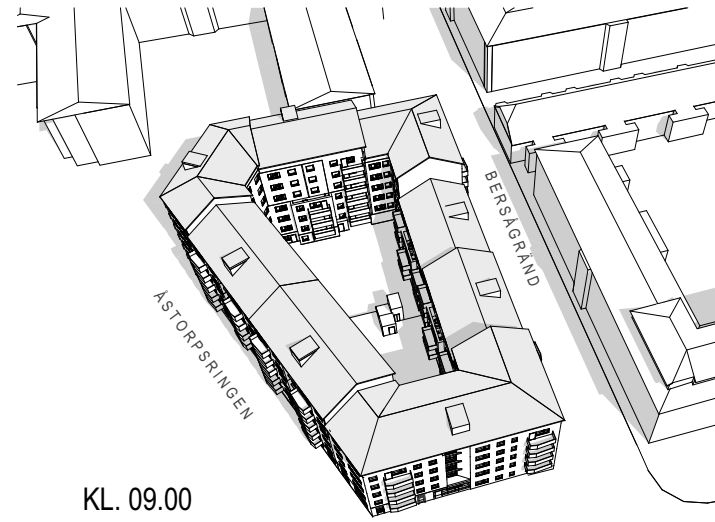




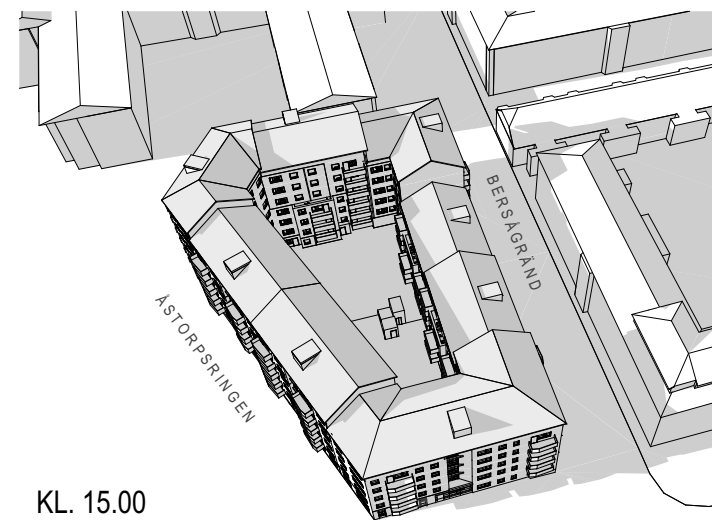
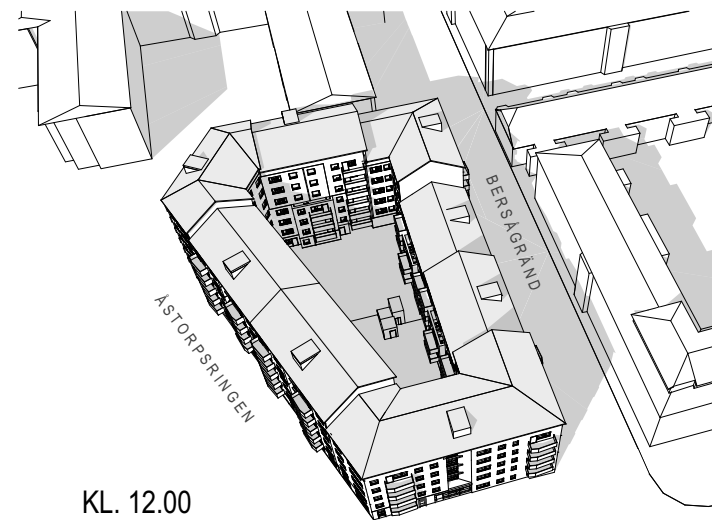
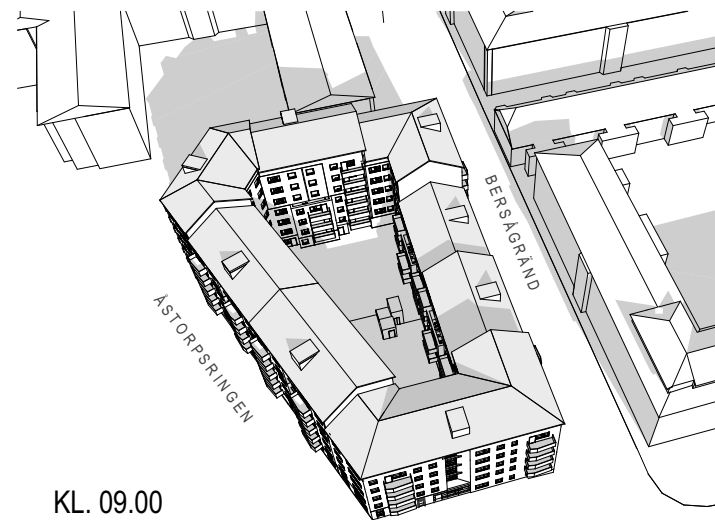




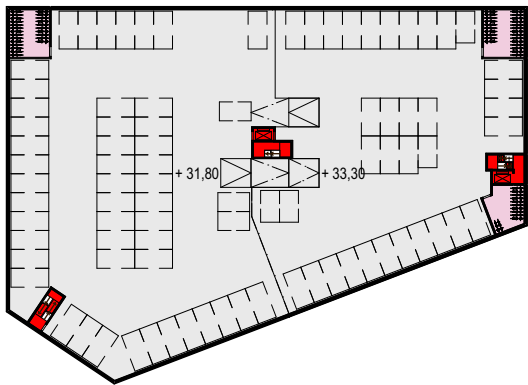
## SOMMARSOLSTÅND, 21 JUNI



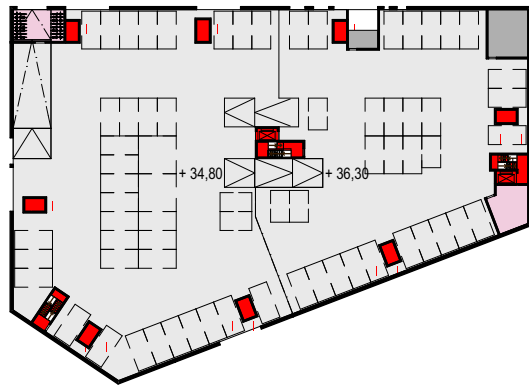
## HÖSTDAGJÄMNING, 23 SEPTEMBER



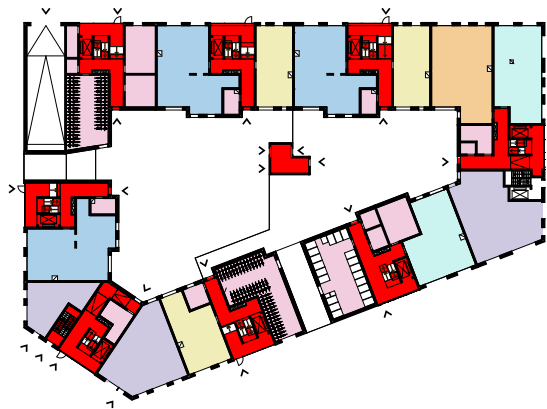




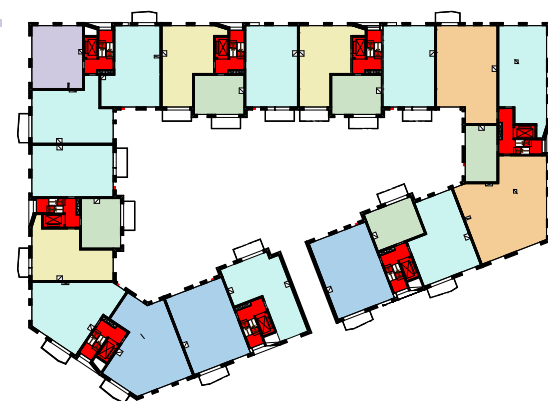
Plan 1, parkering  
ca 90 p-platser  
ca120 cykel p-platser



Plan 2, parkering  
ca 69 p-platser  
ca 16 cykel p-platser



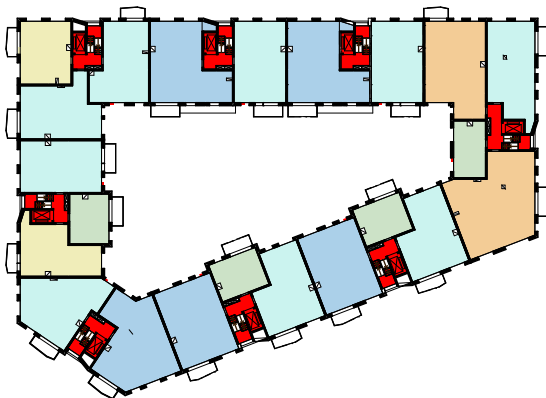
Plan 3, bostäder, gård  
ca 194 cykel p-platser  
150 i hus, 44 utomhus



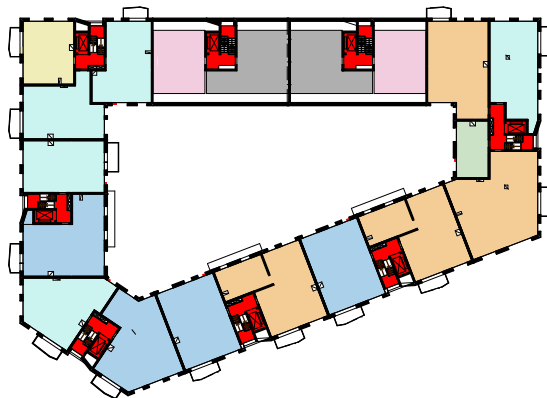
Plan 4, bostäder



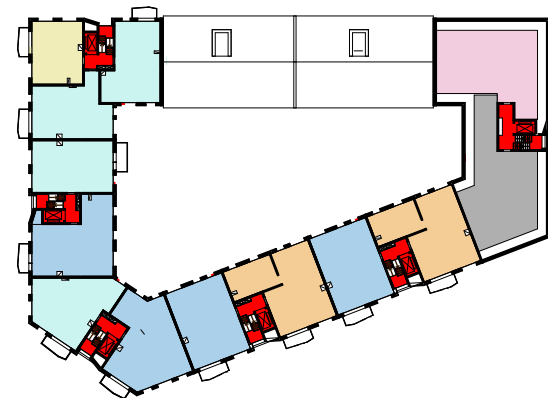
Plan 5, bostäder



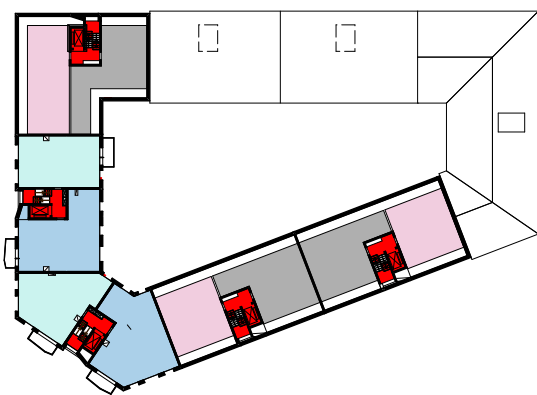
Plan 6, bostäder



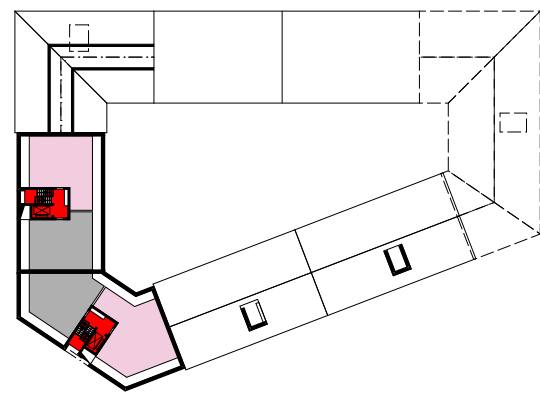
Plan 7, bostäder, vind



Plan 8, bostäder, vind



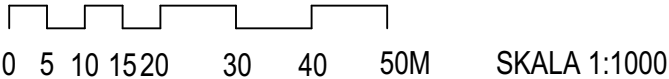
Plan 9, bostäder, vind



Plan 10, vind

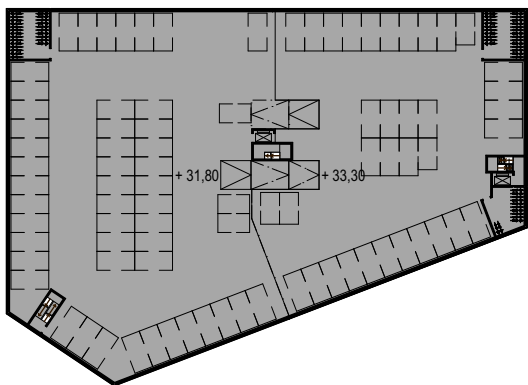
BRUKSAREA	
<b>ÖVA</b>	
ÖVA Garage	5 052 kvm
ÖVA Kommunikation	1 407 kvm
ÖVA Teknik	667 kvm
<b>Totalt</b>	<b>7 126 kvm</b>
<b>BIA</b>	
Cykelparkering/service	267 kvm
Miljörum	65 kvm
Tvättstuga	48 kvm
Städ	11
Barnvagns- och rullstolsförråd	83 kvm
Lägenhetsförråd	599 kvm
<b>Totalt</b>	<b>1 073 kvm</b>
<b>LOA</b>	
Kontor / lokaler	283 kvm
<b>Totalt</b>	<b>283 kvm</b>
<b>BOA</b>	
1 ROK (16 st)	532 kvm
2 ROK (14 st)	824 kvm
3 ROK (40 st)	2 980 kvm
4 ROK (24 st)	2 165 kvm
5 ROK (13 st)	1 367 kvm
<b>Totalt 107 st</b>	<b>7 868 kvm</b>
<b>SUMMA BRUKSAREA</b>	<b>16 350 kvm</b>

ÖVA Garage	1 ROK, BOA
ÖVA Kommunikation	2 ROK, BOA
ÖVA Teknik	3 ROK, BOA
BIA	4 ROK, BOA
LOA	5 ROK, BOA

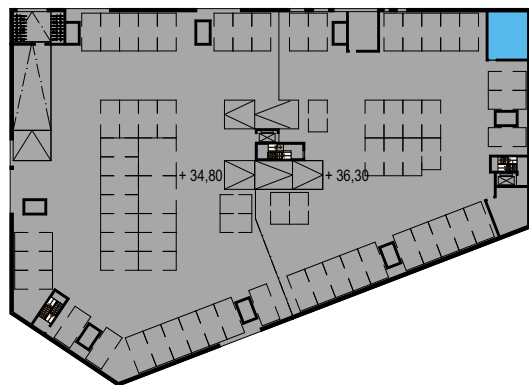


SKALA 1:1000





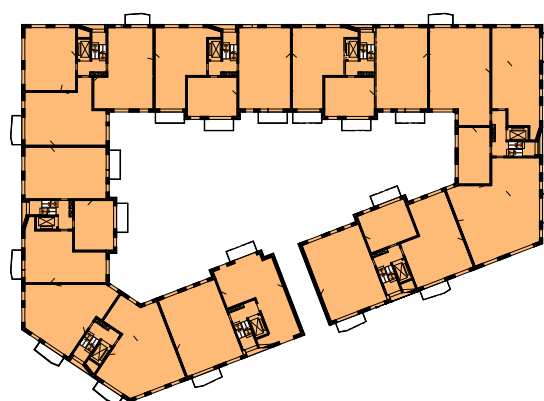
**Plan 1, parkering**  
ca 90 p-platser  
ca 120 cykel p-platser



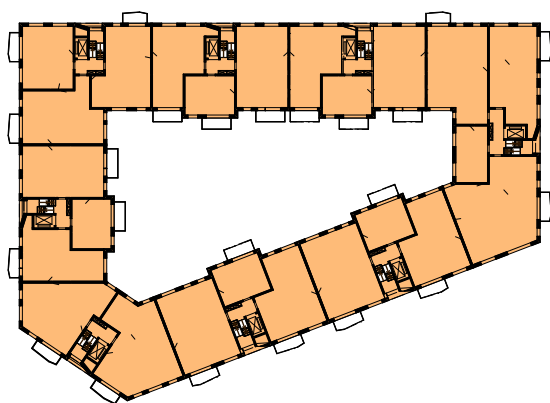
**Plan 2, parkering**  
ca 69 p-platser  
ca 16 cykel p-platser



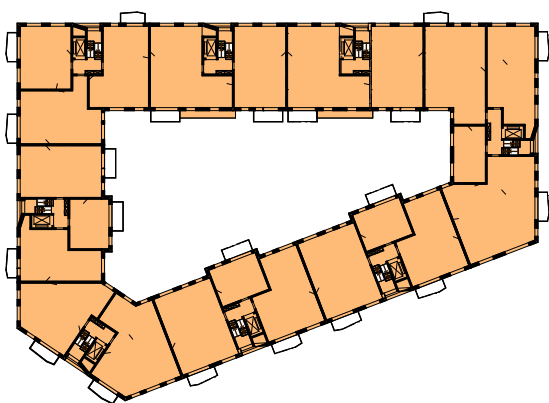
**Plan 3, bostäder, gård**  
ca 194 cykel p-platser  
150 i hus, 44 utomhus



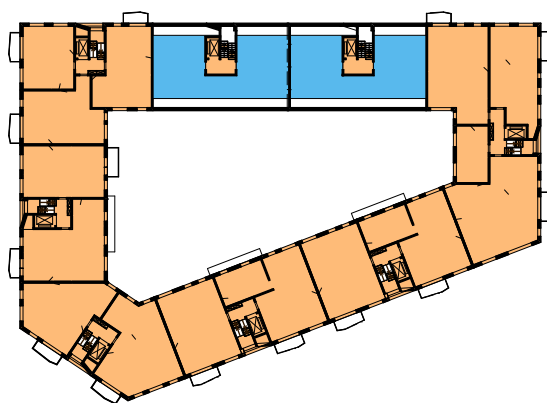
**Plan 4, bostäder**



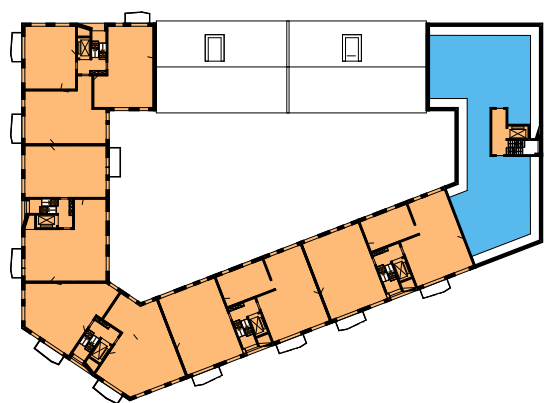
**Plan 5, bostäder**



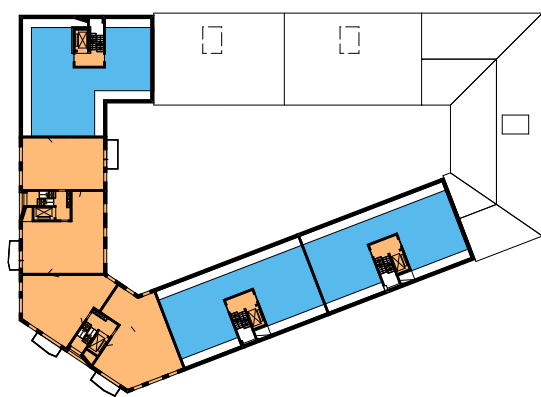
**Plan 6, bostäder**



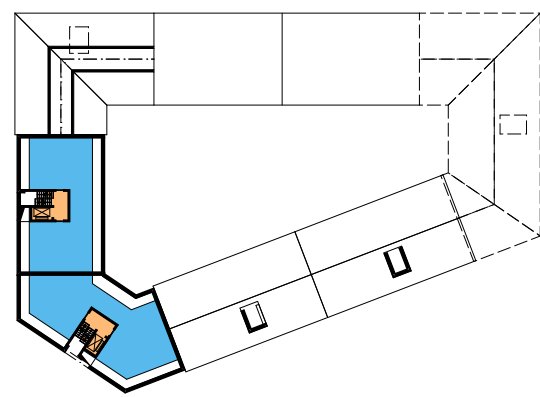
**Plan 7, bostäder, vind**






**Plan 8, bostäder, vind**

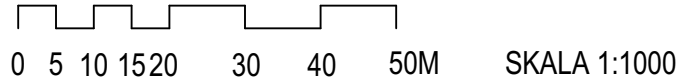


**Plan 9, bostäder, vind**

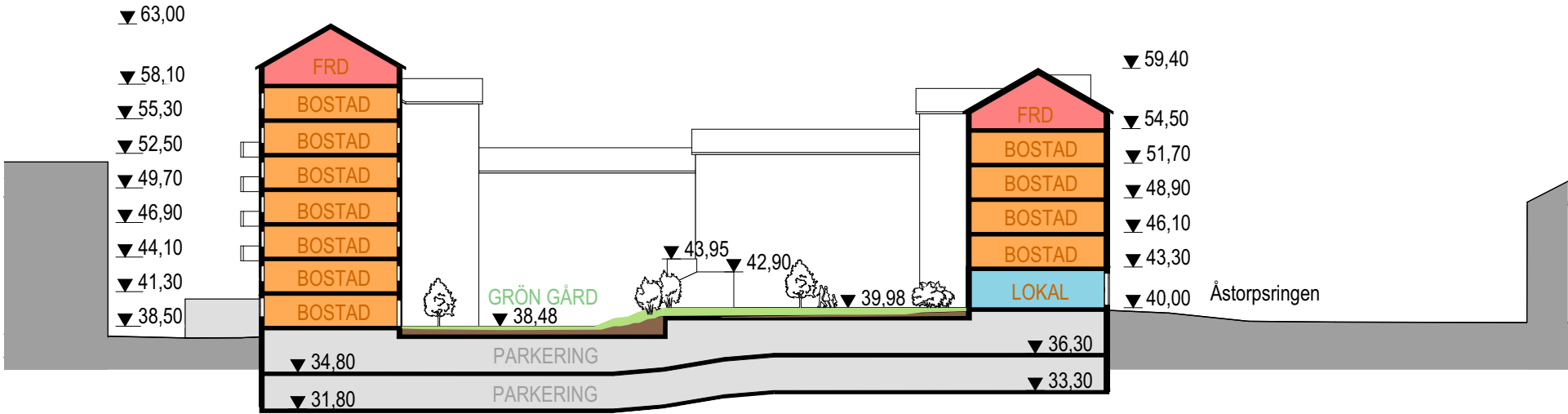


**Plan 10, vind**

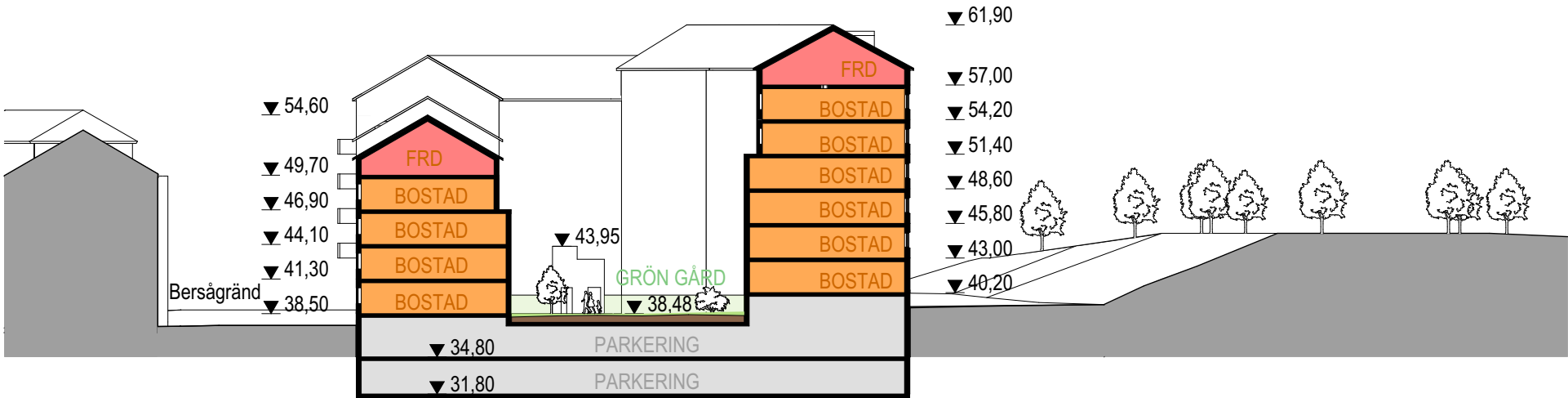
<b>BTA</b>		
BTA Garage		5 607 kvm
BTA Ljus		11 086 kvm
BTA Förråd / Fläktrum		1 305 kvm
<b>SUMMA BTA</b>		
17 998 kvm		
<b>BOA / BTA = 7 868 / 17 998 = 43,7 %</b>		



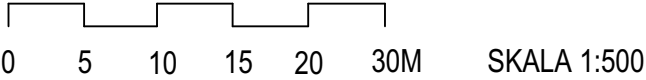




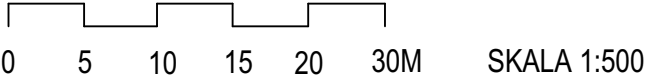
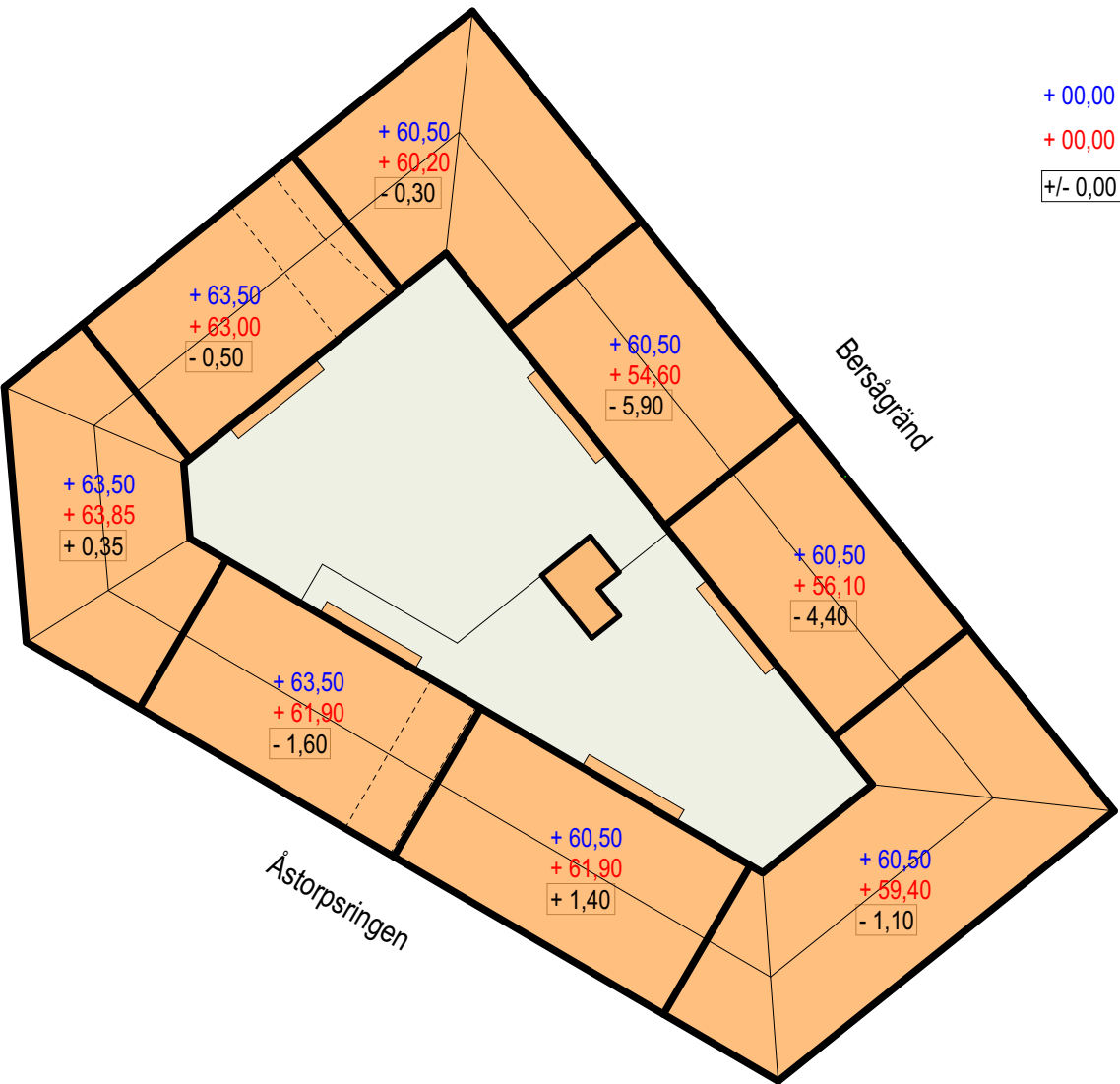
Längdsektion A



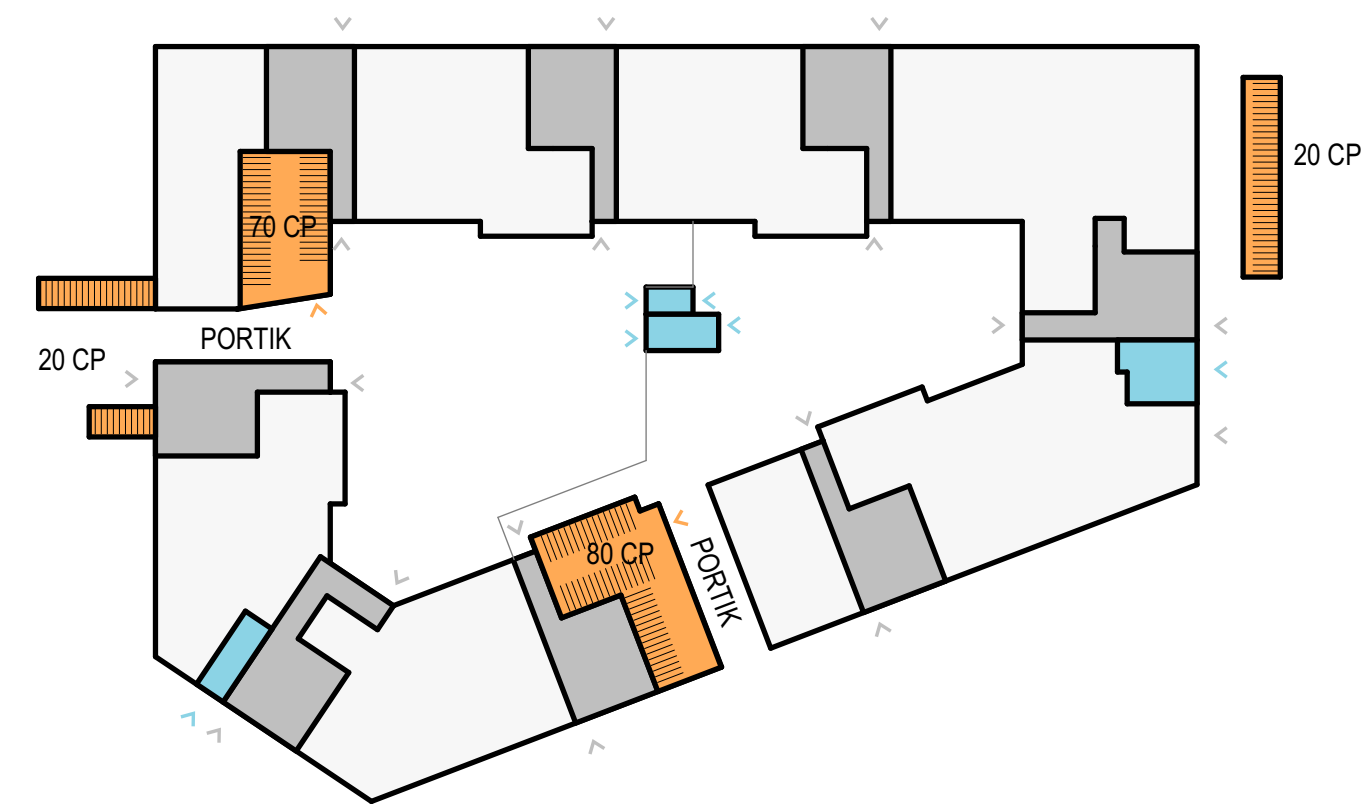
Tvärsektion B







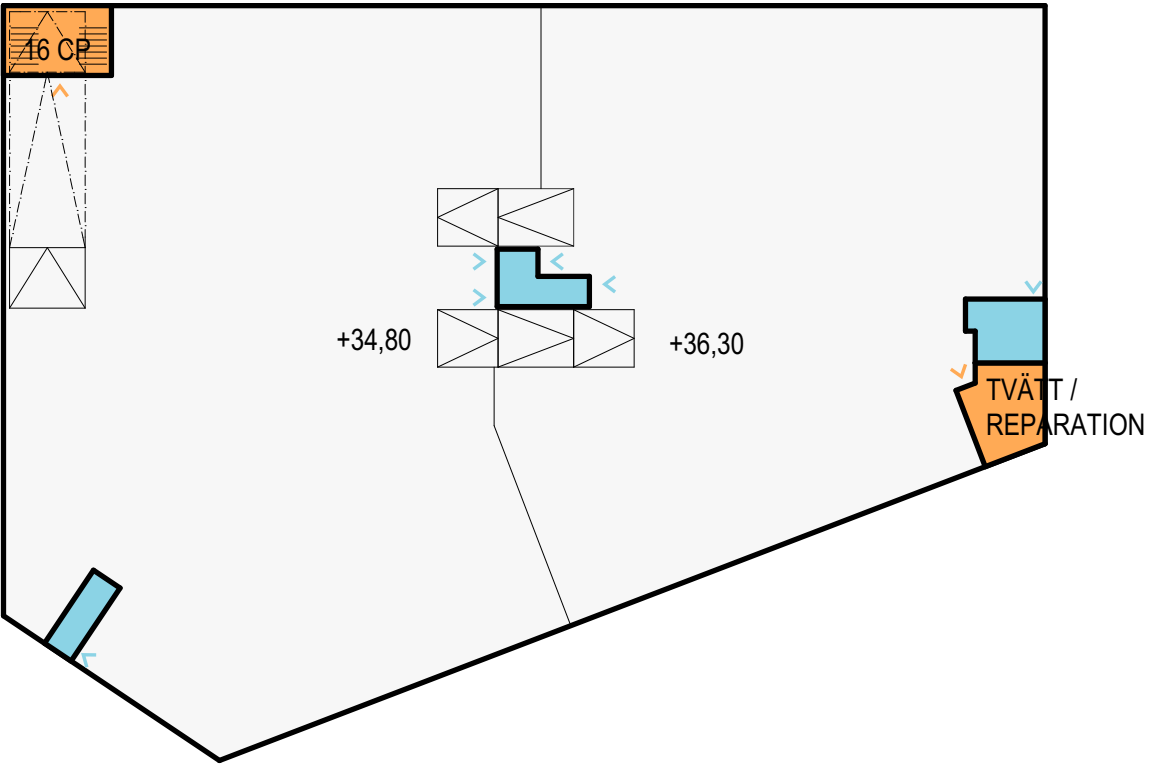




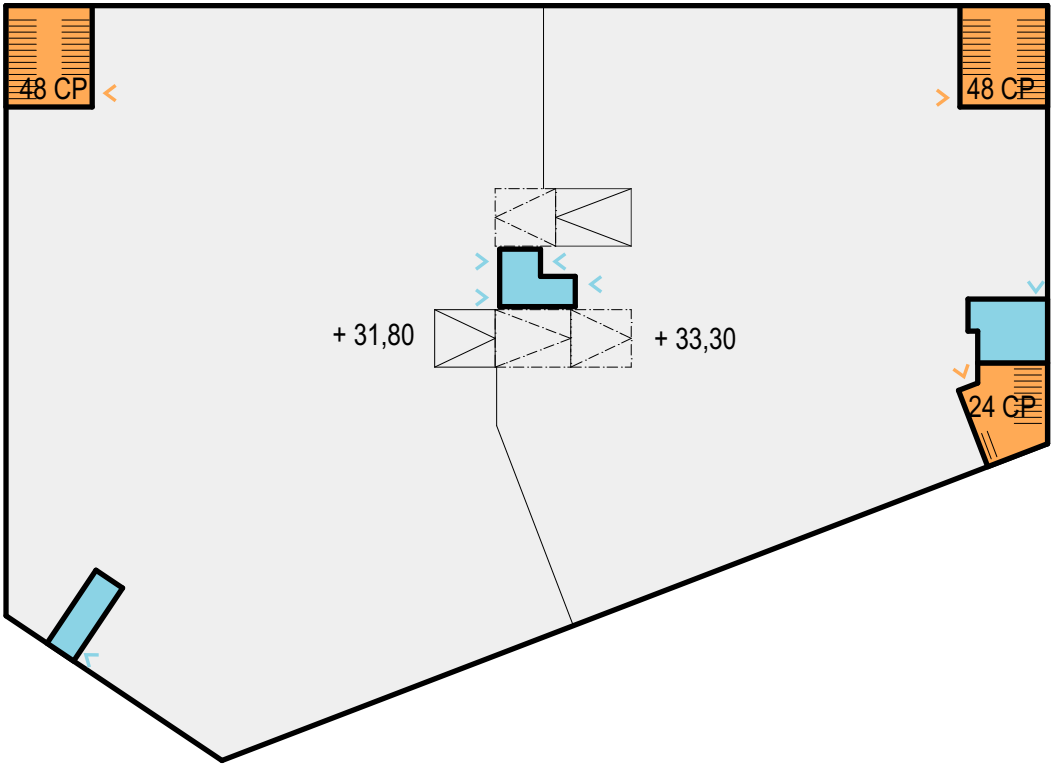
**Plan 3, Entréplan**  
190 cykelplatser, varav 40 platser utomhus

- FÖRKLARINGAR
- TRAPPHUS BOSTÄDER
  - ENTRÉ BOSTÄDER
  - TRAPPHUS GARAGE
  - ENTRÉ GARAGE
  - CYKELPARKERING
  - ENTRÉ CYKELPARKERING

ANTAL CYKELPLATSER INOMHUS: 286  
ANTAL CYKELPLATSER UTMOMHUS: 40  
**TOTALT ANTAL CYKELPLATSER: 326**



**Plan 2, Garage**  
16 cykelplatser



**Plan 1, Garage**  
120 cykelplatser

