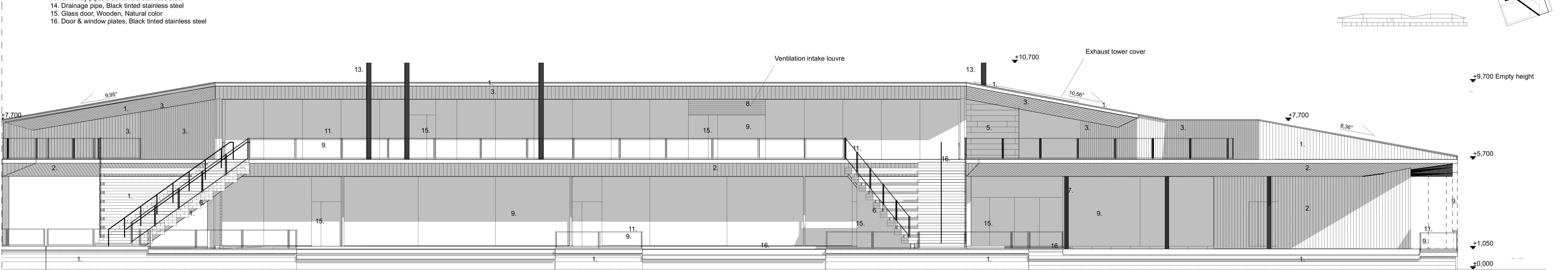
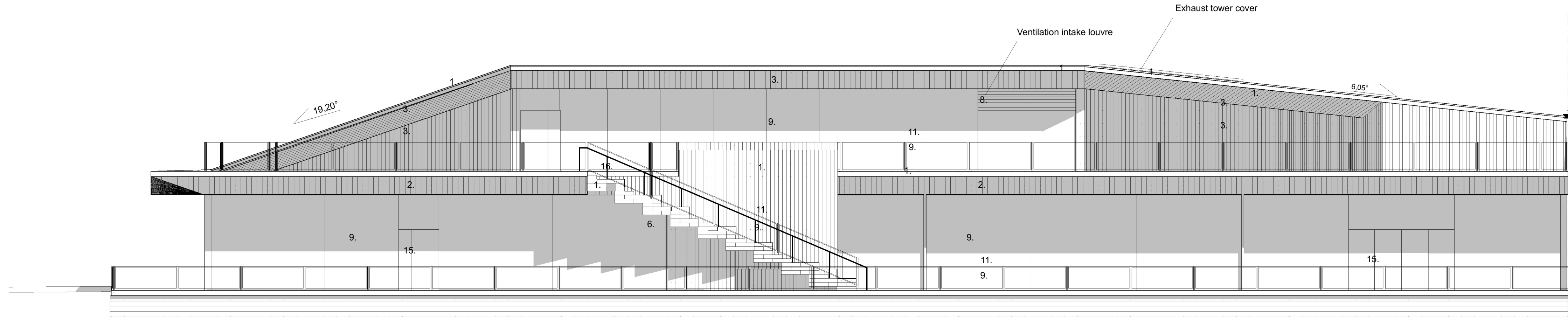


Inkom till Stockholms stadsbyggnadskontor - 2021-05-17, Dnr 2020-11119
Tillför Stockholms stadsbyggnadskontor - 2021-05-17, Dnr 2020-11119
Mikael Andersson Ståhl

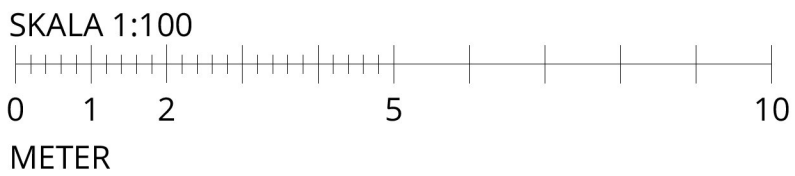
- FÖRKLARINGAR
PLUSHÖJDER ANGES I METER
1. Wood planks, Natural gray, flame and rot protection
 2. Pinewood planks, Natural color, Fireretardant treatment
 3. Pinewood planks, Wood stain, warm
 4. Horizontal logs, Untreated
 5. Horizontal logs, Shugi ban -treated charred log
 6. Steel beam, Black tinted steel
 7. Timber pillar, Natural color Flame retardant treatment
 8. Mirror glass, ventilation louver
 9. Clear Glass
 10. Mirror glass
 11. Railing frame & post, Black tinted stainless steel
 12. mesh, Stainless steel
 13. Chimney pipe, Black tinted stainless steel
 14. Drainage pipe, Black tinted stainless steel
 15. Glass door, Wooden, Natural color
 16. Door & window plates, Black tinted stainless steel



Fasad mot väster, del 1 1:100



Fasad mot väster, del 2 1:100



Empty height = Roof height when the structure is empty of occupant load. When loaded with full occupant capacity the whole structure will lower approx. -0.50m

Mälaren water change heights in RH2000:

- mean water level: +0.86m
- Max Water level: +1.42m
- mean high water level : +1.13m
- Min. water level: +0.42m
- mean low water level: +0.70m

A	10.05.2021	The height of the stage roof has grown	AM
		Roof blanks over the east side eave have changed direction	
		The steel web mesh changed to clear glass on railings	
		Roof shape and angle in the middle changed to block noise pollution	
		Roof shape and angle on east changed to block noise pollution	

BET	DATUM	ÄNDRINGAR AVSER	SIGN
-----	-------	-----------------	------

Höjdsystem RH2000

STADSDEL	FASTIGHET	DIARENUMMER		
Gamla Stan	Gamla Stan 1:34	2020-11119		
BYGGNADSTYP			STATUS	SEKVN
Nybyggnad			BYGGLOVHANDLING	
ARENDET AVSER, ADDRESS			BETECKNING	SKALA
Flytande badhus och multifunktionsbyggnad			Fasader - mot väster	1:100

Munkbrohamnen 1				
ANSVARIG ARKITEKT				
Anssi Lassila			FIL	REV
KONTRAKTPERSON			Fasader - mot väster.pdf	A
Aki Markkanen			OKRADE	NUMMER
AM, TL			DATUM	PROJ. NR
			04.05.2021	1281
			ARK	A-40-3-004

OOPÉAA OFFICE FOR PERIPHERAL ARCHITECTURE

SENAJOKI, Kuopiostrada 19 A, FI-00100 Helsinki +358 (0)6 414 1220
HELSINKI, Etelänseläntienkatu 10, FI-00100 Helsinki +358 (0)6 304 8200