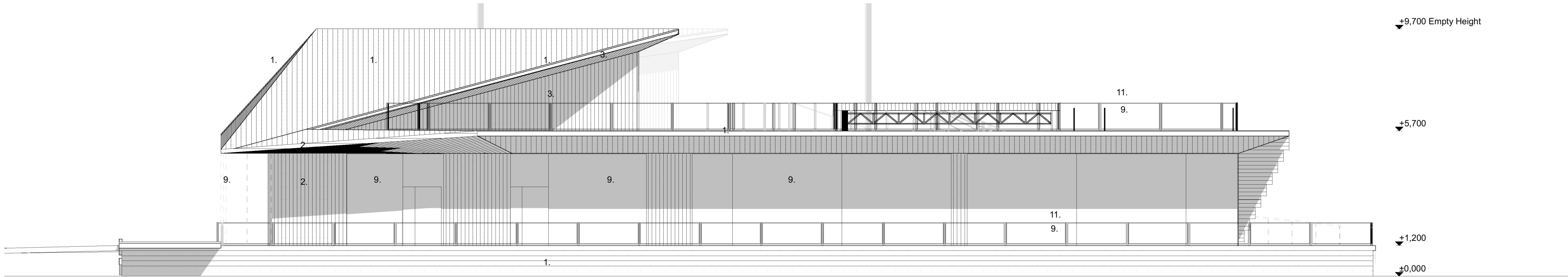
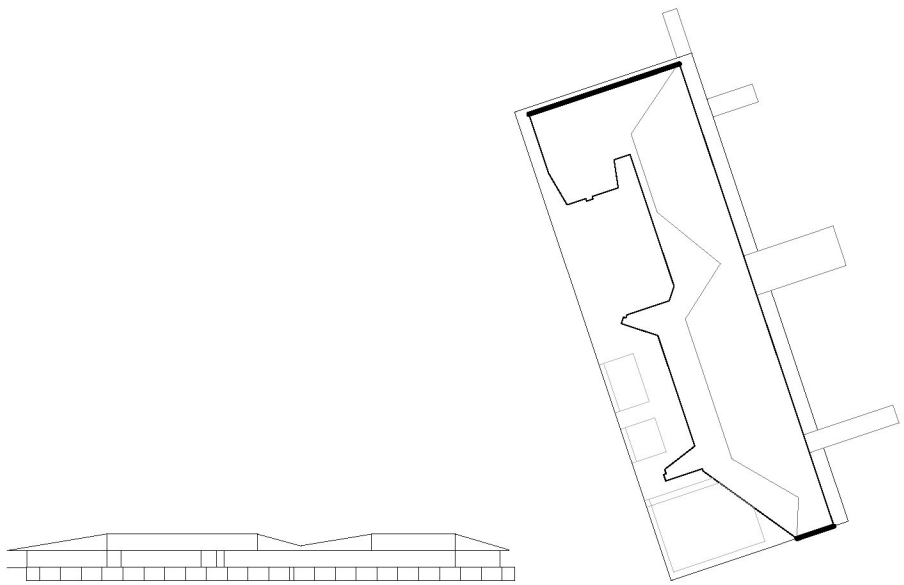
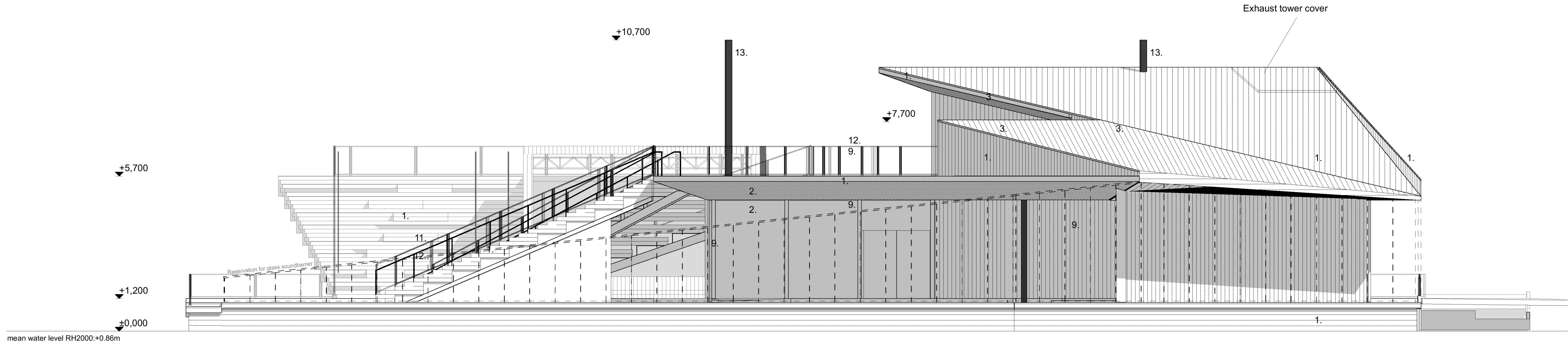


FÖRKLARINGAR  
PLUSHÖJDER ANGES I METER

1. Wood planks, Natural gray, flame and rot protection
2. Pinewood planks, Natural color, Fireretardant treatment
3. Pinewood planks, Wood stain, warm
4. Horizontal logs, Untreated
5. Horizontal logs, Shugi ban -treated charred log
6. Steel beam, Black tinted steel
7. Timber pillar, Natural color Flame retardant treatment
8. Mirror glass, ventilation louver
9. Clear Glass
10. Mirror glass
11. Railing frame & post, Black tinted stainless steel
12. mesh, Stainless steel
13. Chimney pipe, Black tinted stainless steel
14. Drainage pipe, Black tinted stainless steel
15. Glass door, Wooden, Natural color
16. Door & window plates, Black tinted stainless steel



Fasad mot norr 1:100



Empty height = Roof height when the structure is empty of occupant load. When loaded with full occupant capacity the whole stucture will lower approx. -0.50m

Mälaren water change heights in RH2000:

- mean water level: +0.86m
- Max Water level: +1.42m
- mean high water level : +1.13m
- Min. water level: +0.42m
- mean low water level: +0.70m

B	24.05.2021	Handrails added to east side outdoor ramps	AM
		Floating stairs changed	
		Bollards added to floating stairs	
		Bollards added to pathway under the eave	

BET	DATUM	ÄNDRINGAR AVSER	SIGN
-----	-------	-----------------	------

Höjdsystem RH2000

STADSDEL	FASTIGHET	DIARENUMMER	
Gamla Stan	Gamla Stan 1:34	2020-11119	
BYGGNADSTYP		STATUS	SEKVN.R
Nybyggnad		BYGGLOVHANDLING	
ARENDET AVSER, ADDRESS		BETECKNING	SKALA
Flytande badhus och multifunktionsbyggnad		Fasader - gavlar	1:100

Munkbrohamnen 1			
ANSVARIG ARKITEKT			
Anssi Lassila			
KONTRAKTPERSON		FIL	REV
Aki Markkanen		B	
RYAD AV	DATUM	OMRADE	PROJ. NR
AM, TL	04.05.2021	ARK	1281
			NUMMER
			A-40-3-005

OOPÉAA OFFICE FOR PERIPHERAL ARCHITECTURE

SEPAÄLÖN: Kuopio: 19. A. PLU/1000: Seinäjoki: +358 (0)6 414 1220  
Helsingin: Etelä-Hämeen: Helsingin: 19. A. PLU/1000: Seinäjoki: +358 (0)6 414 1220

SKALA 1:100

