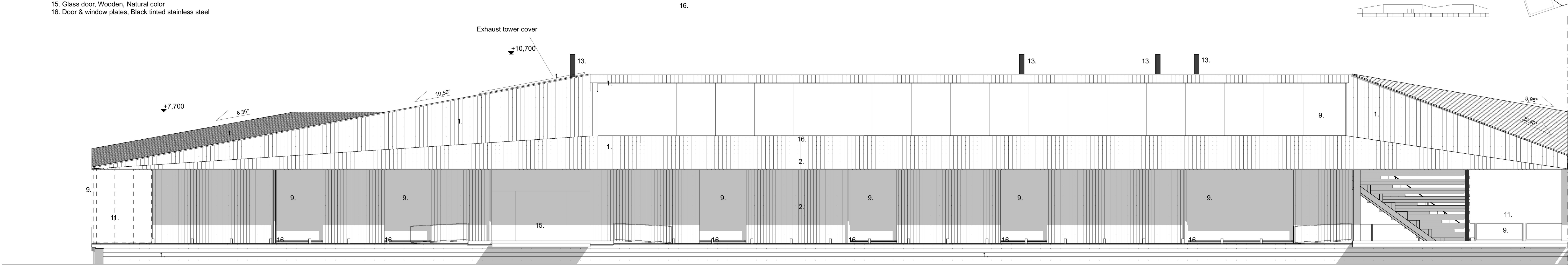
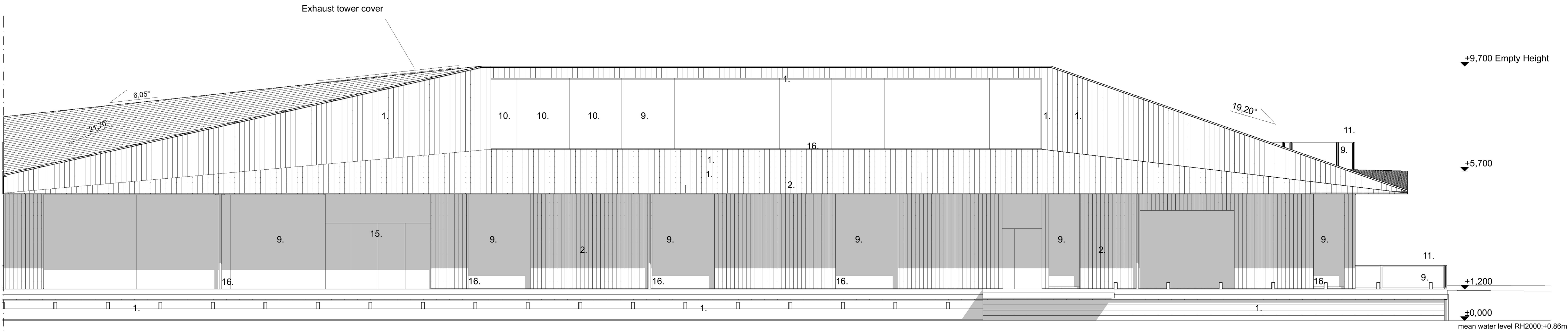


FÖRKLARINGAR  
PLUSHÖJDER ANGES I METER

1. Wood planks, Natural gray, flame and rot protection
2. Pinewood planks, Natural color, Fireretardant treatment
3. Pinewood planks, Wood stain, warm
4. Horizontal logs, Untreated
5. Horizontal logs, Shugi ban -treated charred log
6. Steel beam, Black tinted steel
7. Timber pillar, Natural color Flame retardant treatment
8. Mirror glass, ventilation louver
9. Clear Glass
10. Mirror glass
11. Railing frame & post, Black tinted stainless steel
12. mesh, Stainless steel
13. Chimney pipe, Black tinted stainless steel
14. Drainage pipe, Black tinted stainless steel
15. Glass door, Wooden, Natural color
16. Door & window plates, Black tinted stainless steel



Fasad mot öster, del 1 1:100



Fasad mot öster, del 2 1:100

Empty height = Roof height when the structure is empty of occupant load. When loaded with full occupant capacity the whole sturcture will lower approx. -0.50m

Mälaren water change heights in RH2000:

-mean water level: +0.86m  
-Max Water level: +1.42m  
-mean high water level : +1.13m  
-Min. water level: +0.42m  
-mean low water level: +0.70m

B	24.05.2021	Handrails added to east side outdoor ramps	AM
		Floating stairs chaged	
		Bollards added to floating stairs	
		Bollards added to pathway under the eave	

BET	DATUM	ÄNDRINGAR AVSER	SIGN
-----	-------	-----------------	------

Höjdsystem RH2000

STADSDEL	FASTIGHET	DIREKTOR	STATUS	SEKVR
Gamla Stan	Gamla Stan 1:34	2020-11119	BYGGLOVHANDLING	
BYGGNADSTYP	Nybyggnad	ARENDET AVSER, ADDRESS	BETECKNING	SKALA
		Flytande badhus och multifunktionsbyggnad	Fasader - mot öster	1:100

Munkbrohamnen 1	ANSVARIG ARKITEKT	FIL	REV
Anssi Lassila		Fasader - mot öster.pdf	B

KONTRAKTPERSON	DATUM	OMRÅDE	PROJ. NR	NÄMNER
Aki Markkanen	04.05.2021	ARK	1281	A-40-3-003

OOPÉAA OFFICE FOR PERIPHERAL ARCHITECTURE

SEPAJOKI, Kuopio, Finland 19.8.1960/2000, Saksalainen +358 (0)9 414 1235, HELSINKI, Etelä-Hämeen Tie 10/01100 Helsinki +358 (0)9 350 354 0205