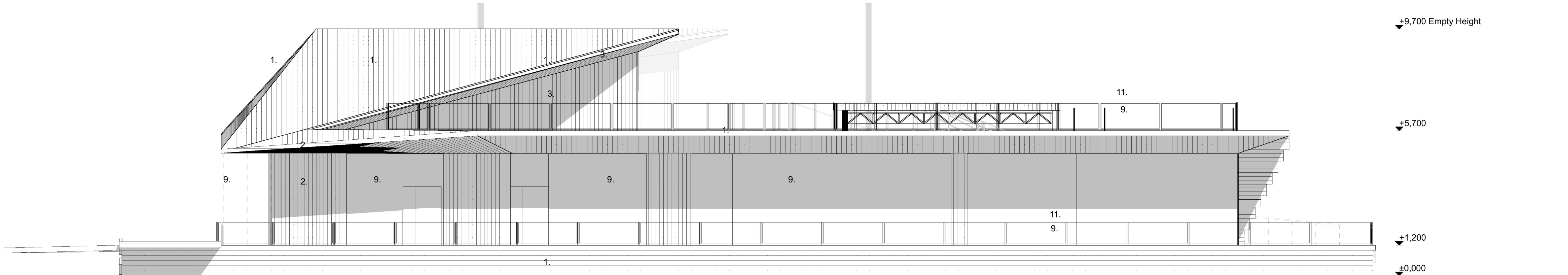
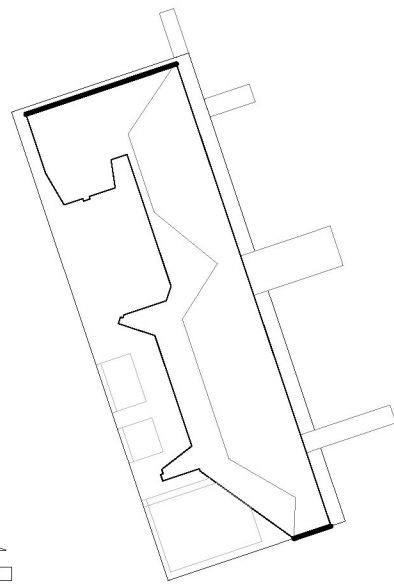
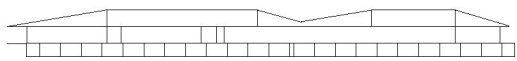


Inkom till Stockholms stadsbyggnadskontor - 2021-05-24, Dnr 2020-11119

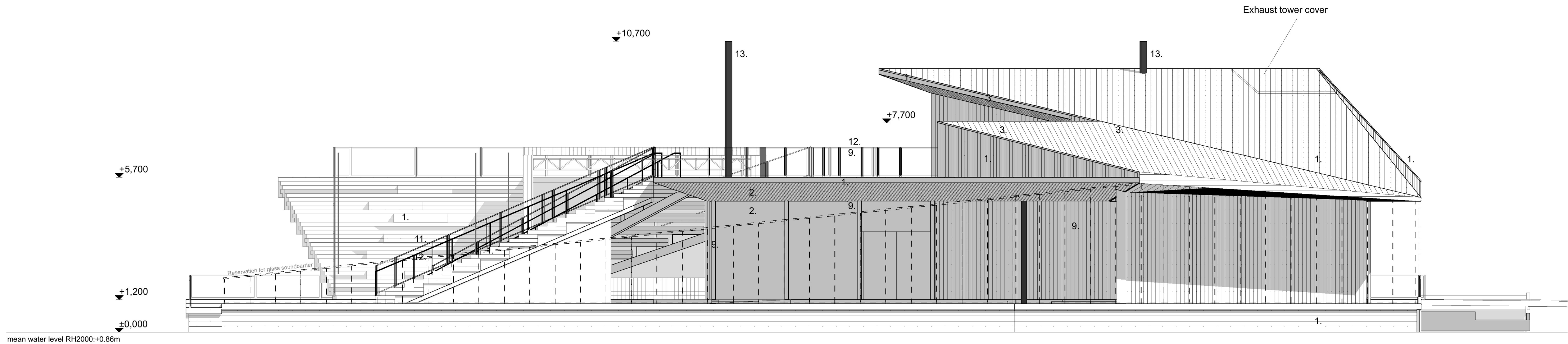
Fasad mot söder 1:100

FÖRKLARINGAR
PLUSHÖJDER ANGES I METER

1. Wood planks, Natural gray, flame and rot protection
2. Pinewood planks, Natural color, Fireretardant treatment
3. Pinewood planks, Wood stain, warm
4. Horizontal logs, Untreated
5. Horizontal logs, Shugi ban -treated charred log
6. Steel beam, Black tinted steel
7. Timber pillar, Natural color Flame retardant treatment
8. Mirror glass, ventilation louver
9. Clear Glass
10. Mirror glass
11. Railing frame & post, Black tinted stainless steel
12. mesh, Stainless steel
13. Chimney pipe, Black tinted stainless steel
14. Drainage pipe, Black tinted stainless steel
15. Glass door, Wooden, Natural color
16. Door & window plates, Black tinted stainless steel



Fasad mot norr 1:100



Empty height = Roof height when the structure is empty of occupant load. When loaded with full occupant capacity the whole stucture will lower approx. -0.50m

Mälaren water change heights in RH2000:

-mean water level: +0.86m
-Max Water level: +1.42m
-mean high water level : +1.13m
-Min. water level: +0.42m
-mean low water level: +0.70m

| | | | |
|---|------------|--|----|
| B | 24.05.2021 | Handrails added to east side outdoor ramps | AM |
| | | Floating stairs changed | |
| | | Bollards added to floating stairs | |
| | | Bollards added to pathway under the eave | |

| | | | |
|-----|-------|-----------------|------|
| BET | DATUM | ÄNDRINGAR AVSER | SIGN |
|-----|-------|-----------------|------|

Höjdsystem RH2000

| | | | | |
|---|------------------|----------------------|----------|-----------------|
| STADSDEL | FASTIGHET | DIARENUMMER | | |
| Gamla Stan | Gamla Stan 1:34 | 2020-11119 | | |
| BYGGNADSTYP | STATUS | SEKVN | | |
| Nybyggnad | BYGGLOVHANDLING | | | |
| ARENDET AVSER, ADDRESS | BETECKNING | SKALA | | |
| Flytande badhus och multifunktionsbyggnad | Fasader - gavlar | 1:100 | | |
| Munkbrohamnen 1 | | | | |
| ANSVARIG ARKITEKT | | | | |
| Anssi Lassila | | FIL | REV | B |
| KONTRAKTPERSON | | Fasader - gavlar.pdf | | |
| Aki Markkanen | | DATE | PROJ. NR | NUMMER |
| AM, TL | | 04.05.2021 | ARK | 1281 A-40-3-005 |

OOPCAA OFFICE FOR PERIPHERAL ARCHITECTURE

SEPAÄCKÖ, Kungälvskan 19 A, FI-01010 Seinäjoki +358 (0)6 414 1220
Helsingin Elinkeino Kehittämiskeskus 10, FI-00100 Helsinki +358 (0)20 304 8200