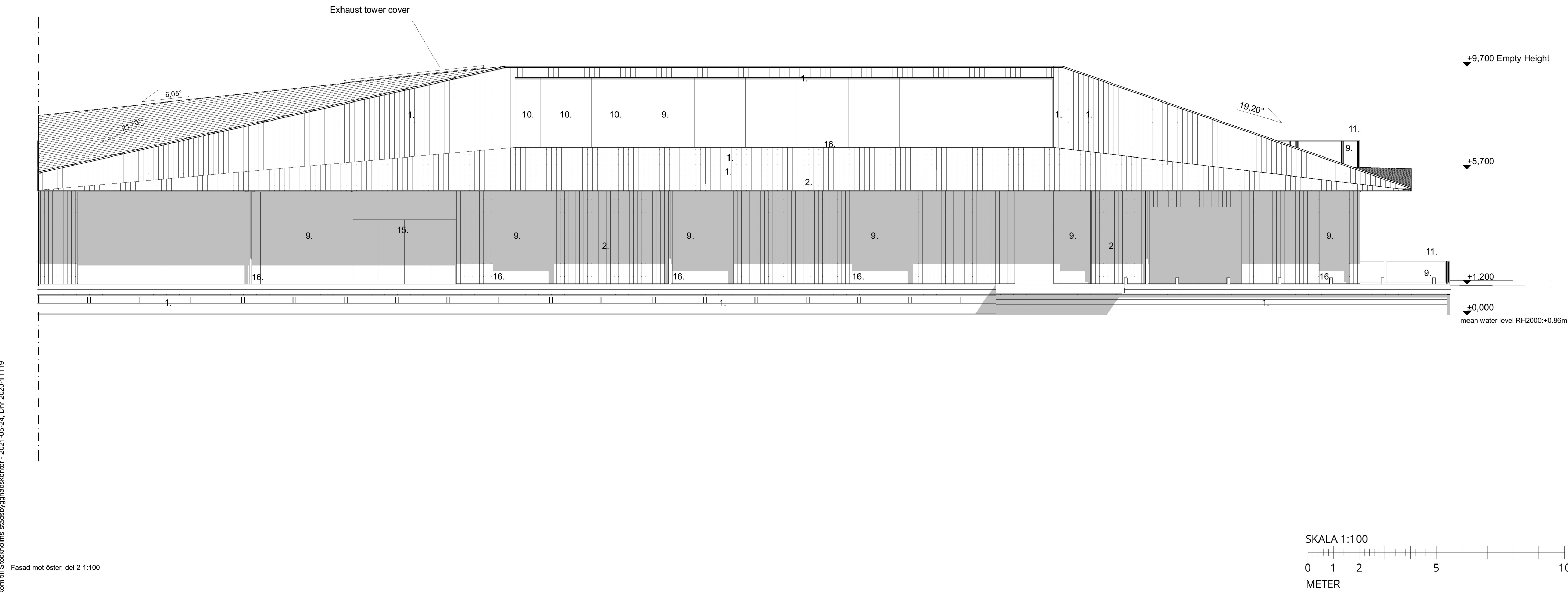
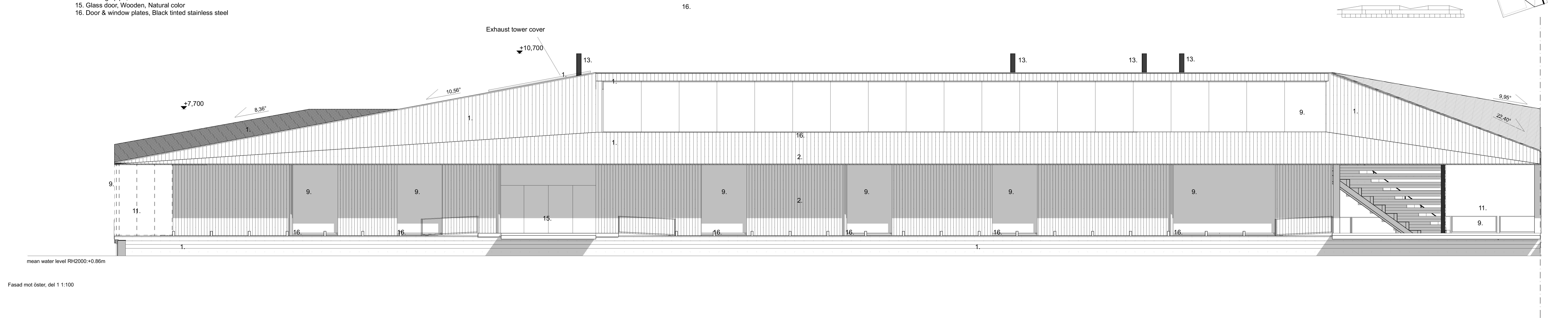


FÖRKLARINGAR
PLUSHÖJDER ANGES I METER

1. Wood planks, Natural gray, flame and rot protection
2. Pinewood planks, Natural color, Fireretardant treatment
3. Pinewood planks, Wood stain, warm
4. Horizontal logs, Untreated
5. Horizontal logs, Shugi ban -treated charred log
6. Steel beam, Black tinted steel
7. Timber pillar, Natural color Flame retardant treatment
8. Mirror glass, ventilation louver
9. Clear Glass
10. Mirror glass
11. Railing frame & post, Black tinted stainless steel
12. mesh, Stainless steel
13. Chimney pipe, Black tinted stainless steel
14. Drainage pipe, Black tinted stainless steel
15. Glass door, Wooden, Natural color
16. Door & window plates, Black tinted stainless steel



Empty height = Roof height when the structure is empty of occupant load. When loaded with full occupant capacity the whole structure will lower approx. -0.50m

Mälaren water change heights in RH2000:

-mean water level: +0.86m
-Max Water level: +1.42m
-mean high water level : +1.13m
-Min. water level: +0.42m
-mean low water level: +0.70m

B	24.05.2021	Handrails added to east side outdoor ramps Floating stairs changed Bollards added to floating stairs Bollards added to pathway under the eave	AM
---	------------	--	----

BET	DATUM	ÄNDRINGAR AVSER	SIGN
-----	-------	-----------------	------

Höjdsystem RH2000

STADSDEL	FASTIGHET	DIARENUMMER	
Gamla Stan	Gamla Stan 1:34	2020-11119	
BYGGNADSTYP	STATUS	SEKVN	
Nybyggnad	BYGGLOVHANDLING		
ARENDET AVSER, ADDRESS	BETECKNING	SKALA	
Flytande badhus och multifunktionsbyggnad	Fasader - mot öster	1:100	

Munkbrohamnen 1			
ANSVARIG ARKITEKT			
Anssi Lassila			
KONTRAKTPERSON	FIL	REV	B
Aki Markkanen	Fasader - mot öster.pdf		
RYDAD	DATUM	PROJ. NR	NUMMER
AM, TL	04.05.2021	ARK	1281 A-40-3-003

OOPÉAA OFFICE FOR PERIPHERAL ARCHITECTURE

SENAJOKI, Kuopioentie 19 A, FI-61000 Seinäjoki +358 (0)6 414 1220
HELSINKI, Eteläinen Puutarhuri 11, FI-00100 Helsinki +358 (0)6 304 8200