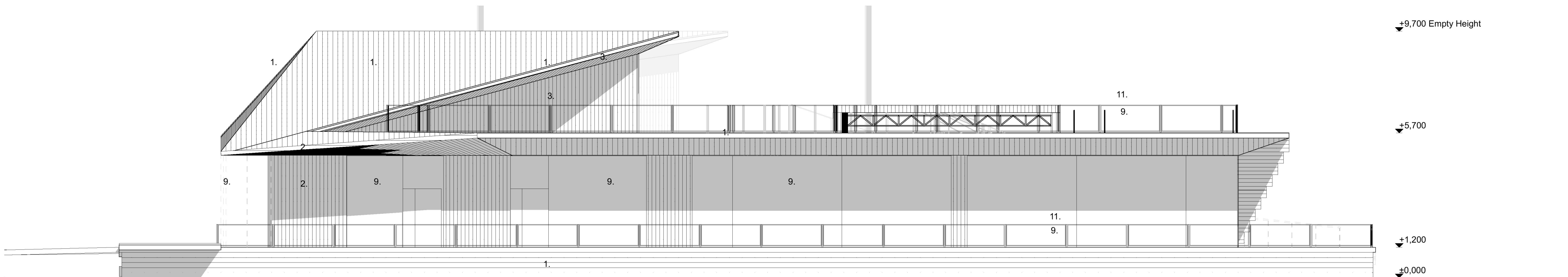
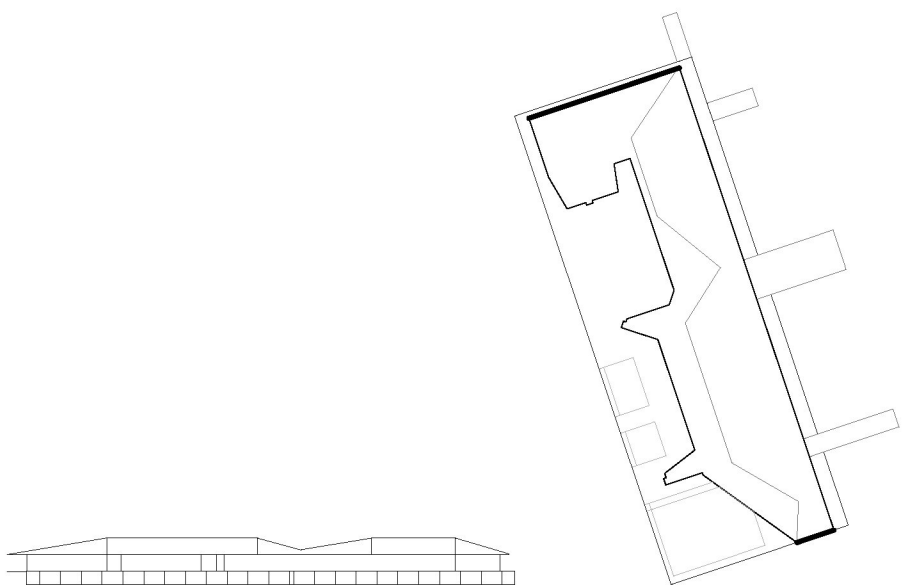


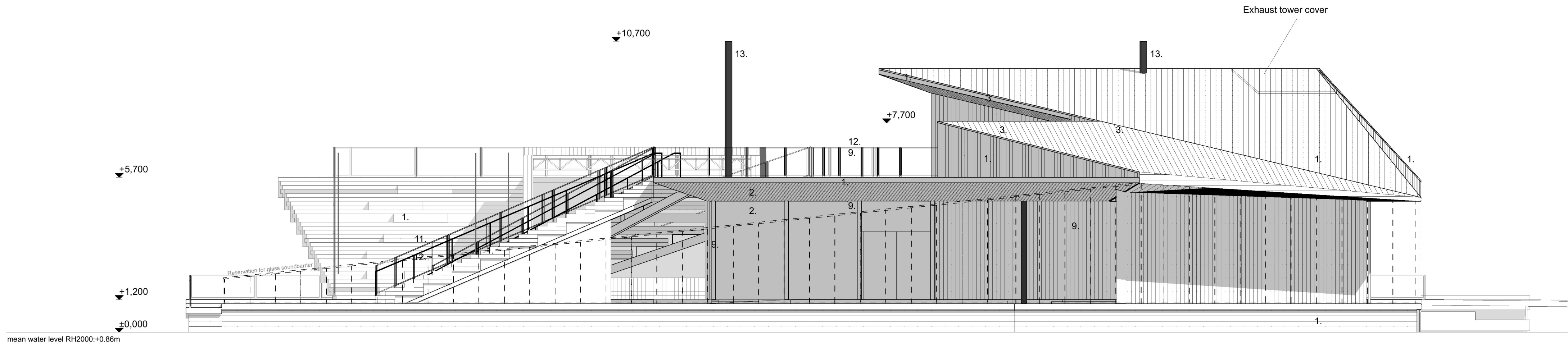
Inkom till Stockholms stadsbyggnadskontor - 2021-05-17, Dnr 2020-11119

FÖRKLARINGAR  
PLUSHÖJDER ANGES I METER

1. Wood planks, Natural gray, flame and rot protection
2. Pinewood planks, Natural color, Fireretardant treatment
3. Pinewood planks, Wood stain, warm
4. Horizontal logs, Untreated
5. Horizontal logs, Shugi ban -treated charred log
6. Steel beam, Black tinted steel
7. Timber pillar, Natural color Flame retardant treatment
8. Mirror glass, ventilation louver
9. Clear Glass
10. Mirror glass
11. Railing frame & post, Black tinted stainless steel
12. mesh, Stainless steel
13. Chimney pipe, Black tinted stainless steel
14. Drainage pipe, Black tinted stainless steel
15. Glass door, Wooden, Natural color
16. Door & window plates, Black tinted stainless steel



Fasad mot norr 1:100



Fasad mot söder 1:100

Empty height = Roof height when the structure is empty of occupant load. When loaded with full occupant capacity the whole stucture will lower approx. -0.50m

Mälaren water change heights in RH2000:

-mean water level:	+0.86m
-Max Water level:	+1.42m
-mean high water level :	+1.13m
-Min. water level:	+0.42m
-mean low water level:	+0.70m

A	10.05.2021	The height of the stage roof has grown	AM
		Roof blanks over the east side eave have changed direction	
		The steel web mesh changed to clear glass on railings	
		Roof shape and angle in the middle changed to block noise pollution	
		Roof shape and angle on east changed to block noise pollution	

BET	DATUM	ÄNDRINGAR AVSER	SIGN
-----	-------	-----------------	------

Höjdsystem RH2000

STADSDEL	FASTIGHET	DIARENUMMER		
Gamla Stan	Gamla Stan 1:34	2020-11119		
BYGGNADSTYP	STATUS		SEKVNR	
Nybyggnad	BYGGLOVHANDLING			
ARENDET AVSER, ADDRESS	BETECKNING		SKALA	
Flytande badhus och multifunktionsbyggnad	Fasader - gavlar		1:100	

Munkbrohamnen 1				
ANSVARIG ARKITEKT				
Anssi Lassila		FIL		REV
KONTRAKTPERSON		Fasader - gavlar.pdf		A
Aki Markkanen		CKRADE		NÄMNER
RYTAD AV	DATUM	PROJ. NR	NUMMER	
AM, TL	04.05.2021	ARK	1281	A-40-3-005

OOPÉAA OFFICE FOR PERIPHERAL ARCHITECTURE

SEPAÄCKÖ, Kuopioentie 19 A, FI-00100 Helsinki +358 (0)6 614 1220  
HELSINKI, Eteläinen Puenteentie 1, FI-00100 Helsinki +358 (0)6 304 8205