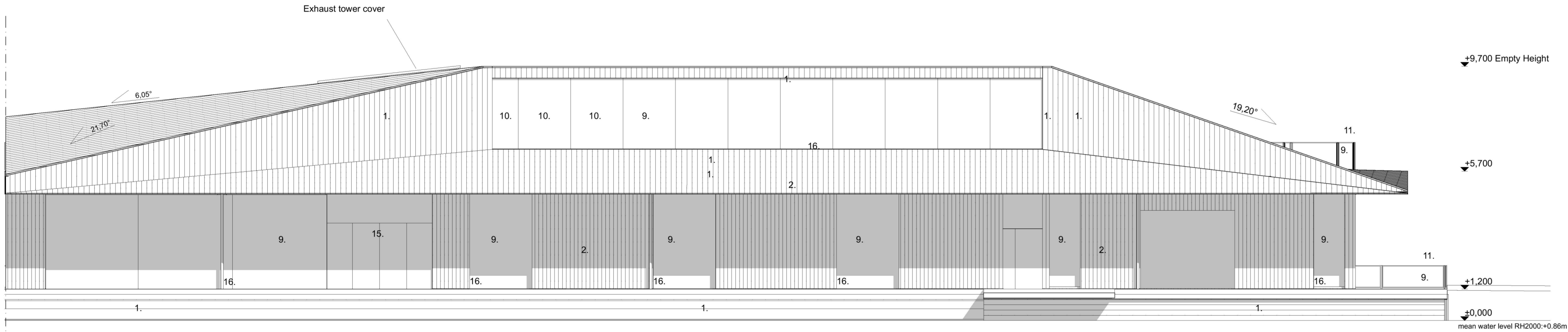
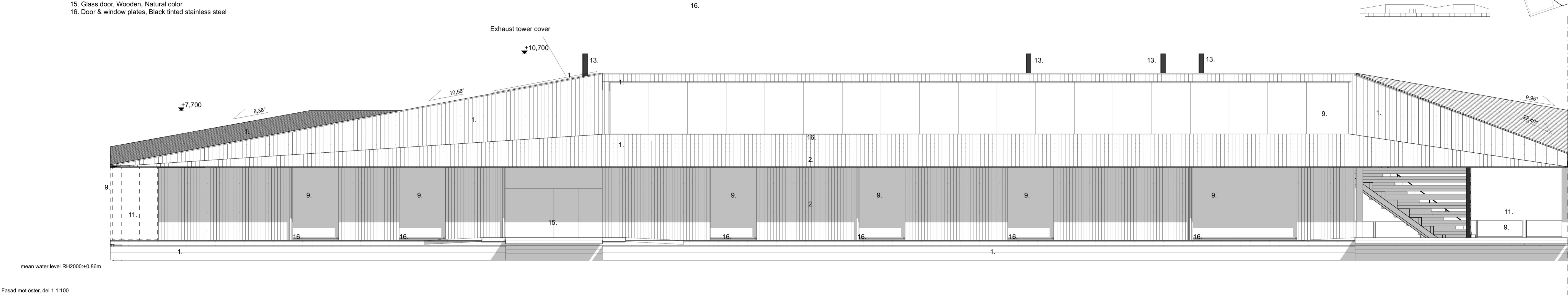


Inkom till Stockholms stadsbyggnadskontor - 2021-05-11, Dnr 2020-11119

- FÖRKLARINGAR  
PLUSHÖJDER ANGES I METER
1. Wood planks, Natural gray, flame and rot protection
  2. Pinewood planks, Natural color, Fireretardant treatment
  3. Pinewood planks, Wood stain, warm
  4. Horizontal logs, Untreated
  5. Horizontal logs, Shugi ban -treated charred log
  6. Steel beam, Black tinted steel
  7. Timber pillar, Natural color Flame retardant treatment
  8. Mirror glass, ventilation louver
  9. Clear Glass
  10. Mirror glass
  11. Railing frame & post, Black tinted stainless steel
  12. mesh, Stainless steel
  13. Chimney pipe, Black tinted stainless steel
  14. Drainage pipe, Black tinted stainless steel
  15. Glass door, Wooden, Natural color
  16. Door & window plates, Black tinted stainless steel



Empty height = Roof height when the structure is empty of occupant load. When loaded with full occupant capacity the whole structure will lower approx. -0.50m

Mälaren water change heights in RH2000:

- mean water level: +0.86m
- Max Water level: +1.42m
- mean high water level : +1.13m
- Min. water level: +0.42m
- mean low water level: +0.70m

A 10.05.2021

Roof blanks over the east side eave have changed direction  
The steel web mesh changed to clear glass on railings  
Roof shape and angle in the middle changed to block noise pollution  
Roof shape and angle on east changed to block noise pollution

AM

BET DATUM ÄNDRINGAR AVSER SIGN

Höjdsystem RH2000

STADSDEL	FASTIGHET	DIARENUMMER	STATUS	SEKV.NR
Gamla Stan	Gamla Stan 1:34	2020-11119	BYGGLOVHANDLING	
BYGGNADSTYP	ARENDET AVSER, ADDRESS	BETECKNING	SKALA	
Nybyggnad	Flytande badhus och multifunktionsbyggnad	Fasader - mot öster	1:100	

Munkbrohamnen 1	ANSVARIG ARKITEKT	FIL	REV	A
Anssi Lassila	KONTRAKTPERSON	Fasader - mot öster.pdf		
Aki Markkanen	RYTTAD AV	OKRADE	PROJ. NR	NUMMER
AM, TL	04.05.2021	ARK	1281	A-40-3-003

OOPÉAA OFFICE FOR PERIPHERAL ARCHITECTURE

SENAJOKI Kuopionkatu 19 A, FI-00100 Senja.fi +358 (0)6 614 1220  
HELSINKI Eteläinen Puutarhankatu 8, FI-00100 Helsinki +358 (0)6 304 8200