

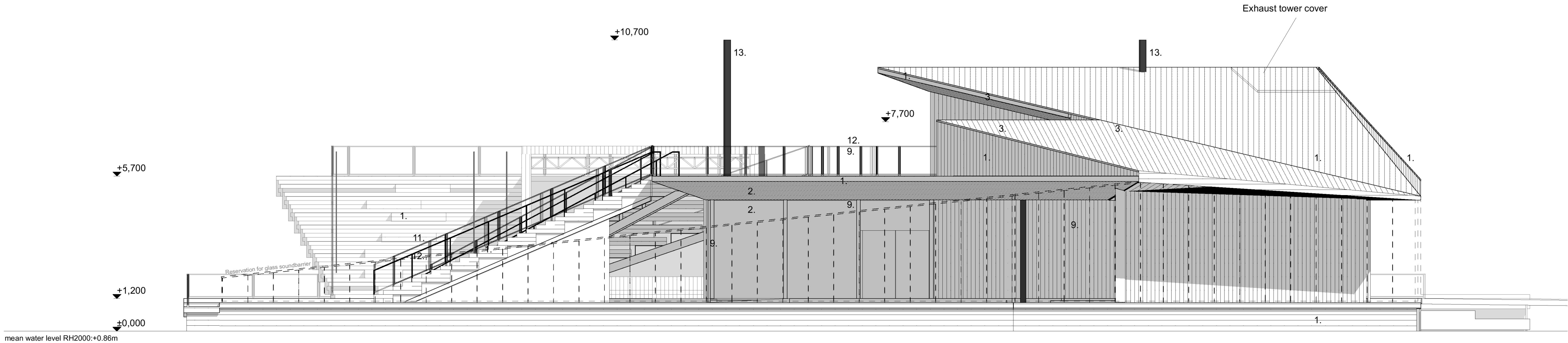
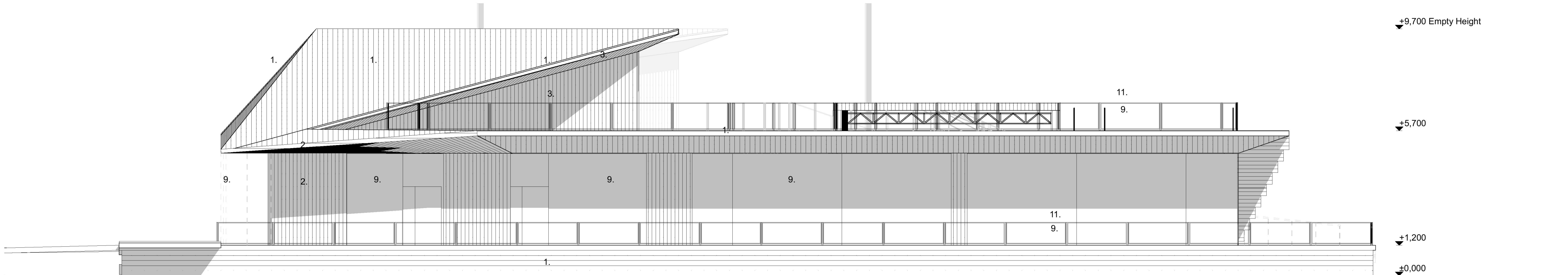
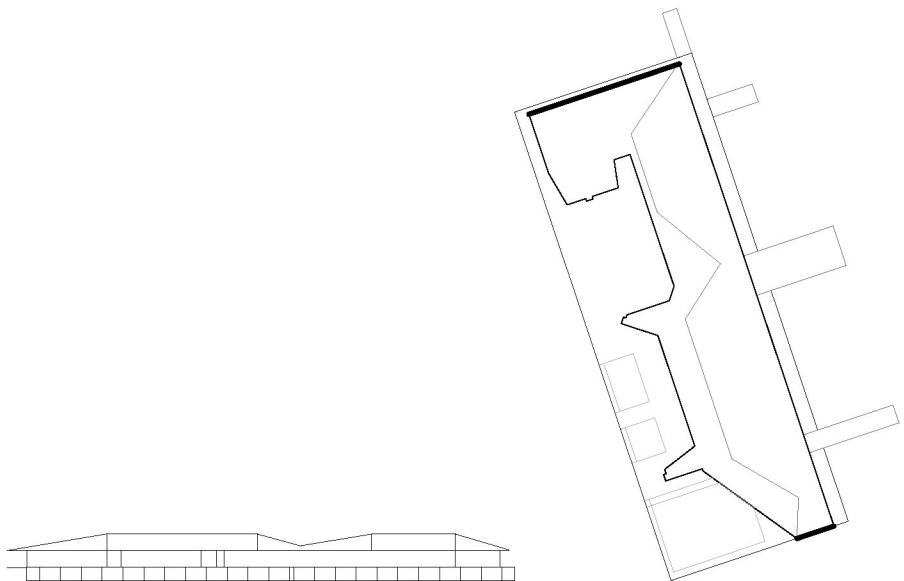
Inkom till Stockholms stadsbyggnadskontor - 2021-05-11, Dnr 2020-11119

Fasad mot söder 1:100

Fasad mot norr 1:100

FÖRKLARINGAR
PLUSHÖJDER ANGES I METER

1. Wood planks, Natural gray, flame and rot protection
2. Pinewood planks, Natural color, Fireretardant treatment
3. Pinewood planks, Wood stain, warm
4. Horizontal logs, Untreated
5. Horizontal logs, Shugi ban -treated charred log
6. Steel beam, Black tinted steel
7. Timber pillar, Natural color Flame retardant treatment
8. Mirror glass, ventilation louver
9. Clear Glass
10. Mirror glass
11. Railing frame & post, Black tinted stainless steel
12. mesh, Stainless steel
13. Chimney pipe, Black tinted stainless steel
14. Drainage pipe, Black tinted stainless steel
15. Glass door, Wooden, Natural color
16. Door & window plates, Black tinted stainless steel



Empty height = Roof height when the structure is empty of occupant load. When loaded with full occupant capacity the whole stucture will lower approx. -0.50m

Mälaren water change heights in RH2000:

-mean water level:	+0.86m
-Max Water level:	+1.42m
-mean high water level :	+1.13m
-Min. water level:	+0.42m
-mean low water level:	+0.70m

A	10.05.2021	The height of the stage roof has grown Roof blanks over the east side eave have changed direction The steel web mesh changed to clear glass on railings Roof shape and angle in the middle changed to block noise pollution Roof shape and angle on east changed to block noise pollution	AM
---	------------	---	----

BET	DATUM	ÄNDRINGAR AVSER	SIGN
-----	-------	-----------------	------

Höjdsystem RH2000

STADSDDEL	FASTIGHET	DIARENUMMER	
Gamla Stan	Gamla Stan 1:34	2020-11119	
BYGGNADSTYP	STATUS	SEKVNR	
Nybyggnad	BYGGLOVHANDLING		
ARENDET AVSER, ADDRESS	BETECKNING	SKALA	
Flytande badhus och multifunktionsbyggnad	Fasader - gavlar	1:100	

Munkbrohamnen 1			
ANSVARIG ARKITEKT			
Anssi Lassila			
KONTRAKTPERSON	FIL	REV	A
Aki Markkanen	Fasader - gavlar.pdf		
RYAD:AT	DATUM	OKRADE	PROJ. NR
AM, TL	04.05.2021	ARK	1281
			NUMMER
			A-40-3-005

OOPÉAA OFFICE FOR PERIPHERAL ARCHITECTURE

SEPAJOKI, Kuopionkatu 19 A, FI-00100 Helsinki +358 (0)6 614 1220
HELSINKI, Eteläsenäntie 10, FI-00100 Helsinki +358 (0)6 304 8205

SKALA 1:100

