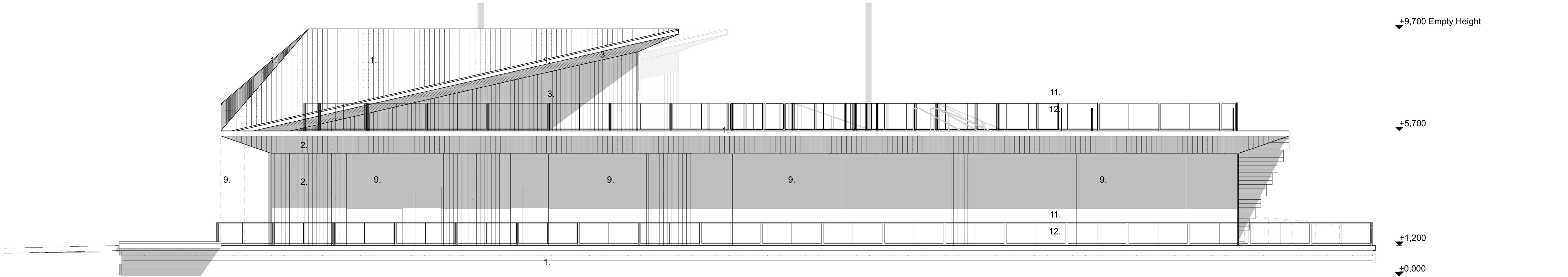


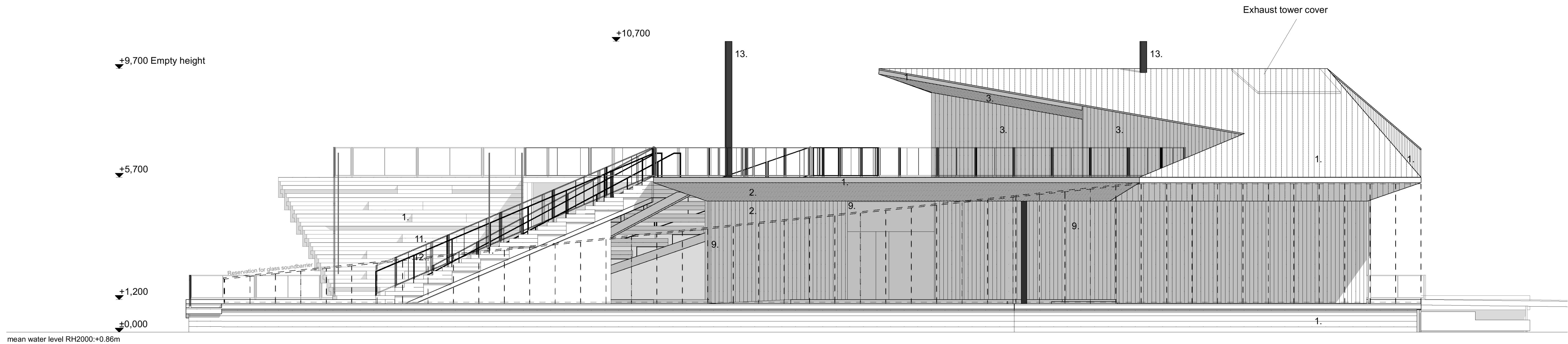
Inkom till Stockholms stadsbyggnadskontor - 2021-05-04, Dnr 2020-11119

Fasad mot söder 1:100

- FÖRKLARINGAR  
PLUSHÖJDER ANGES I METER
1. Wood planks, Natural gray, flame and rot protection
  2. Pinewood planks, Natural color, Fireretardant treatment
  3. Pinewood planks, Wood stain, warm
  4. Horizontal logs, Untreated
  5. Horizontal logs, Shugi ban -treated charred log
  6. Steel beam, Black tinted steel
  7. Timber pillar, Natural color Flame retardant treatment
  8. Mirror glass, ventilation louver
  9. Clear Glass
  10. Mirror glass
  11. Railing frame & post, Black tinted stainless steel
  12. mesh, Stainless steel
  13. Chimney pipe, Black tinted stainless steel
  14. Drainage pipe, Black tinted stainless steel
  15. Glass door, Wooden, Natural color
  16. Door & window plates, Black tinted stainless steel



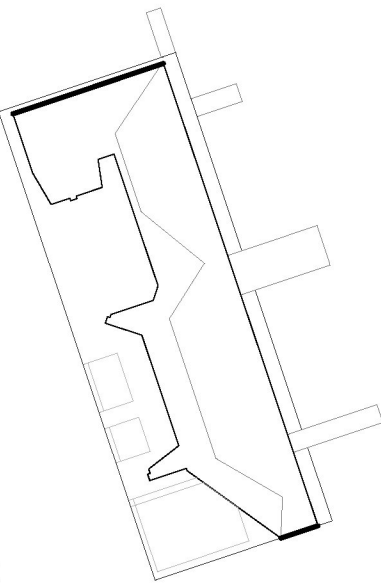
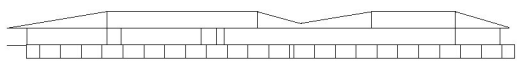
Fasad mot norr 1:100



Empty height = Roof height when the structure is empty of occupant load. When loaded with full occupant capacity the whole structure will lower approx. -0.50m

Mälaren water change heights in RH2000:

-mean water level: +0.86m  
-Max. Water level: +1.42m  
-mean high water level : +1.13m  
-Min. water level: +0.42m  
-mean low water level: +0.70m



Höjdsystem RH2000

|   |                 |                      |            |
|---|-----------------|----------------------|------------|
| STADSDEL                                  | FASTIGHET       | DIARIENUMMER         |            |
| Gamla Stan                                | Gamla Stan 1:34 | 2020-11119           |            |
| BYGGNADSTYP                               |                 | STATUS               | SEKVNR     |
| Nybyggnad                                 |                 | BYGGLOVHANDLING      |            |
| ARENDET AVSER, ADDRESS                    |                 | BETECKNING           | SKALA      |
| Flytande badhus och multifunktionsbyggnad |                 | Fasader - gavlar     | 1:100      |
| Munkbrohamnen 1                           |                 |                      |            |
| ANSVARIG ARKITEKT                         |                 |                      |            |
| Anssi Lassila                             |                 | FIL                  | REV        |
| KONTRAKTPERSON                            |                 | Fasader - gavlar.pdf |            |
| Aki Markkanen                             |                 | DATA                 | NUMMER     |
| RYAD:47                                   | 04.05.2021      | ARK                  | 1281       |
| AM, TL                                    |                 |                      | A-40-3-005 |

OOPÉAA OFFICE FOR PERIPHERAL ARCHITECTURE

SEPAÄCKÖ, Kuopio, Finland 19.8.19.01001 Seppälä +358 (0)6 414 1220  
HELSINKI, Eteläinen Puutarhakuja 8, FI-00100 Helsinki +358 (0)6 304 8205