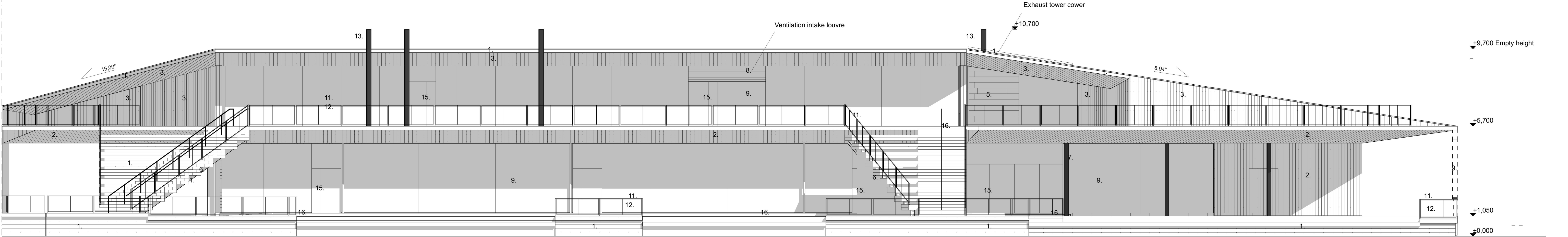
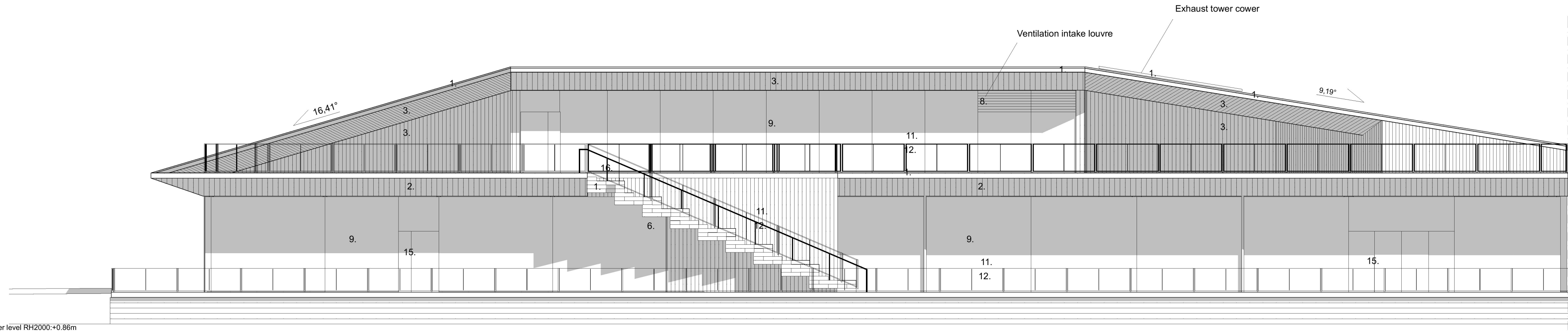


FÖRKLARINGAR  
PLUSHÖJDER ANGES I METER

1. Wood planks, Natural gray, flame and rot protection
2. Pinewood planks, Natural color, Fireretardant treatment
3. Pinewood planks, Wood stain, warm
4. Horizontal logs, Untreated
5. Horizontal logs, Shugi ban -treated charred log
6. Steel beam, Black tinted steel
7. Timber pillar, Natural color Flame retardant treatment
8. Mirror glass, ventilation louver
9. Clear Glass
10. Mirror glass
11. Railing frame & post, Black tinted stainless steel
12. mesh, Stainless steel
13. Chimney pipe, Black tinted stainless steel
14. Drainage pipe, Black tinted stainless steel
15. Glass door, Wooden, Natural color
16. Door & window plates, Black tinted stainless steel



Fasad mot väster, del 1 1:100

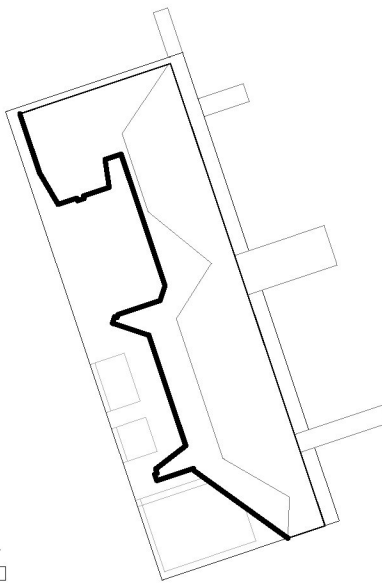
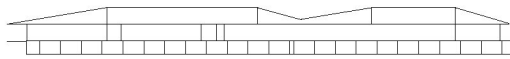


Fasad mot väster, del 2 1:100

Empty height = Roof height when the structure is empty of occupant load. When loaded with full occupant capacity the whole stucture will lower approx. -0.50m

Mälaren water change heights in RH2000:

-mean water level:	+0.86m
-Max. Water level:	+1.42m
-mean high water level :	+1.13m
-Min. water level:	+0.42m
-mean low water level:	+0.70m



Höjdsystem RH2000

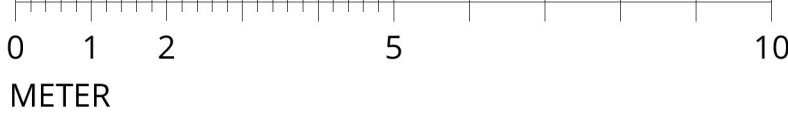
STADSDEL	FASTIGHET	DIARIENUMMER	
Gamla Stan	Gamla Stan 1:34	2020-11119	
BYGGNADSTYP		STATUS	SEKVN.R
Nybyggnad		BYGGLOVHANDLING	
ARENDET AVSER, ADDRESS		BETECKNING	SKALA
Flytande badhus och multifunktionsbyggnad		Fasader - mot väster	1:100

Munkbrohamnen 1			
ANSVARIG ARKITEKT			
Anssi Lassila			
KONTRAKTPERSON	FIL		REV
Aki Markkanen	Fasader - mot väster.pdf		
RYTAD AV	DATUM	OKRADE	PROJ. NR. NAMNER
AM, TL	04.05.2021	ARK	1281 A-40-3-004

OOPÉAA OFFICE FOR PERIPHERAL ARCHITECTURE

SENAJOKI, Kuopiostrada 19 A, FI-61000 Seinäjoki +358 (0)6 414 1220  
HELSINKI, Etelämerenkatu 10, FI-00100 Helsinki +358 (0)6 304 8205

SKALA 1:100



METER