

Takplan



Kvarteret Ärlighetens Rumpplan
Solcellsanläggning
Takplan Skala 1:100
Stockholm 3 april 2020
Linnea Carlsson



Fasad mot sydväst

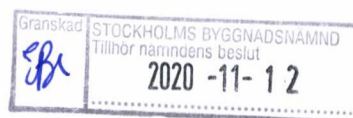


Fasad mot nordöst

| |
|---------------------------------|
| Kvarteret Arlinsholmen, Rungman |
| Solcellsanläggning |
| Fasaddrättning, Skala 1:100 |
| Stockholm 3 april 2020 |
| Linné Carlsson |



Fasad mot
Sydost



Fasad mot
nordväst

Kvartalen Ärligheten & Pumpinen
Solcellsanläggning
Fasadritning Skala 1:100
Stockholm 3 april 2020
Linnea Carlsson

Dnr 2020-05947-575

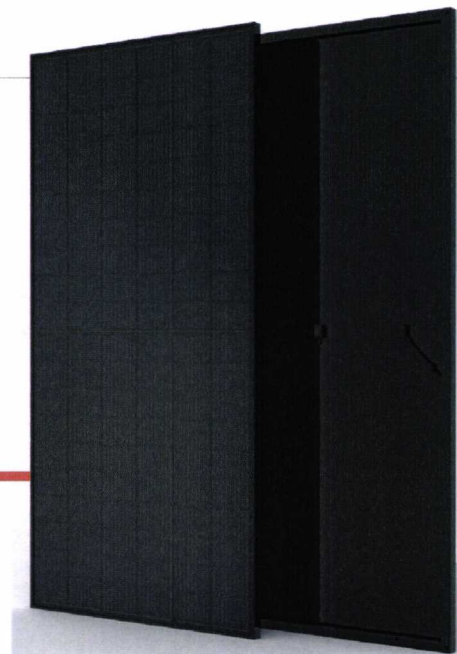


Samtliga solceller placeras parallellt med befintligt tak

| |
|--|
| Kvarteret Ärligheten 6, Pungpinan |
| Solcellsanläggning |
| Solcellens vinkel på taket. Skala 1:10 |
| Stockholm 4 okt 2020 |
| Linnéa Carlsson |

THE HoneyBlack^M

FRAMED 60 LAYOUT MODULE



60 LAYOUT
MONOCRYSTALLINE MODULE

320-340W
POWER OUTPUT RANGE

19.9%
MAXIMUM EFFICIENCY

0~+5W
POSITIVE POWER TOLERANCE

PRODUCTS
TSM-DD06M.05(II)

POWER RANGE
320-340W



High power output

- Combined with MBB technology, maximum 340W



Outstanding visual appearance

- Designed with aesthetics in mind
- Thinner wires that appear all black at a distance



Half-cell design brings higher efficiency

- Half-Cell layout (120 monocrystalline)
- Low thermal coefficients for greater energy production at high operating temperature
- Low cell connection power loss due to half-cell layout (120 monocrystalline)



Highly reliable due to stringent quality control

- Over 30 in-house tests (UV, TC, HF etc)
- Internal test requirement of Trina more stringent than certification authority
- PID resistant
- 100% EL double inspection



Certified to withstand the most challenging environmental conditions

- 2400 Pa negative load
- 5400 Pa positive load

Founded in 1997, Trina Solar is the world's leading total solutions provider for solar energy. With local presence around the globe, Trina Solar is able to provide exceptional service to each customer in each market and deliver our innovative, reliable products with the backing of Trina as a strong, bankable brand. Trina Solar now distributes its PV products to over 100 countries all over the world. We are committed to building strategic, mutually beneficial collaborations with installers, developers, distributors and other partners in driving smart energy together.

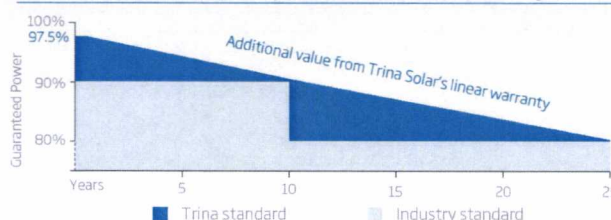
Comprehensive Products And System Certificates

IEC61215/IEC61730/IEC61701/IEC62716
ISO 9001: Quality Management System
ISO 14001: Environmental Management System
ISO14064: Greenhouse gases Emissions Verification
OHSAS 18001: Occupation Health and Safety Management System



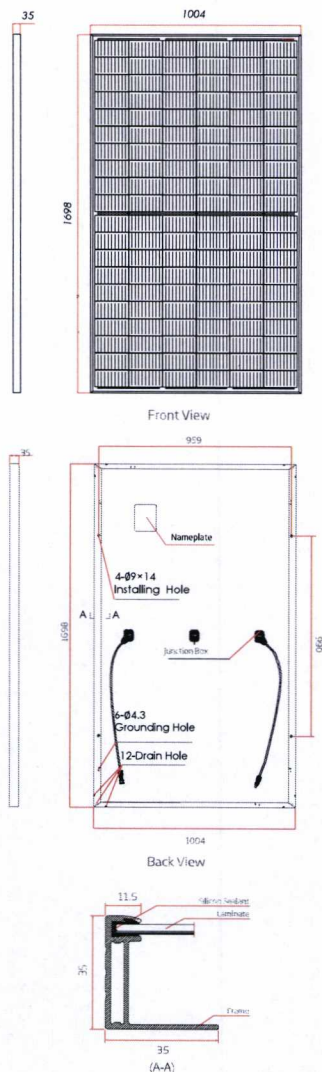
LINEAR PERFORMANCE WARRANTY

10 Year Product Warranty · 25 Year Linear Power Warranty

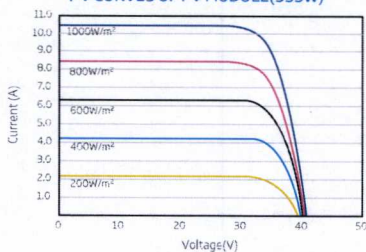


Trinasolar

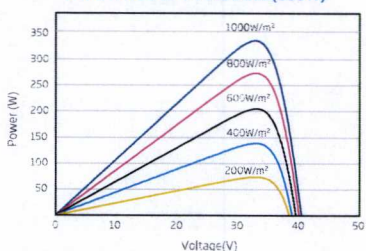
DIMENSIONS OF PV MODULE(mm)



I-V CURVES OF PV MODULE(335W)



P-V CURVES OF PV MODULE(335W)



ELECTRICAL DATA (STC)

| | | | | | |
|---------------------------------|--------|-------|-------|-------|-------|
| Peak Power Watts-PMAX (Wp)* | 320 | 325 | 330 | 335 | 340 |
| Power Output Tolerance-PMAX (W) | 0 ~ +5 | | | | |
| Maximum Power Voltage-VMPP (V) | 33.4 | 33.6 | 33.8 | 34.0 | 34.2 |
| Maximum Power Current-IMPP (A) | 9.58 | 9.67 | 9.76 | 9.85 | 9.94 |
| Open Circuit Voltage-VOC (V) | 40.3 | 40.4 | 40.6 | 40.7 | 41.1 |
| Short Circuit Current-ISC (A) | 10.20 | 10.30 | 10.39 | 10.48 | 10.55 |
| Module Efficiency η_m (%) | 18.8 | 19.1 | 19.4 | 19.7 | 19.9 |

STC: Irradiance 1000W/m², Cell Temperature 25°C, Air Mass AM1.5.
*Measuring tolerance: ±3%.

ELECTRICAL DATA (NMOT)

| | | | | | |
|--------------------------------|------|------|------|------|------|
| Maximum Power-PMAX (Wp) | 241 | 245 | 249 | 253 | 256 |
| Maximum Power Voltage-VMPP (V) | 31.1 | 31.3 | 31.5 | 31.7 | 32.0 |
| Maximum Power Current-IMPP (A) | 7.75 | 7.84 | 7.90 | 7.96 | 8.02 |
| Open Circuit Voltage-VOC (V) | 38.0 | 38.1 | 38.2 | 38.3 | 38.7 |
| Short Circuit Current-ISC (A) | 8.23 | 8.31 | 8.38 | 8.45 | 8.50 |

NMOT: Irradiance at 800W/m², Ambient Temperature 20°C, Wind Speed 1m/s.

MECHANICAL DATA

| | |
|----------------------|--|
| Solar Cells | Monocrystalline |
| Cell Orientation | 120 cells (6 × 20) |
| Module Dimensions | 1698 × 1004 × 35 mm (66.85 × 39.53 × 1.38 inches) |
| Weight | 18.7kg (41.2lb) |
| Glass | 3.2mm (0.13 inches), High Transmission, AR Coated Tempered Glass |
| Encapsulant Material | EVA |
| Backsheet | Black |
| Frame | 35 mm (1.38 inches) Anodized Aluminium Alloy |
| J-Box | IP 68 rated |
| Cables | Photovoltaic Technology Cable 4.0mm² (0.006 inches²), Portrait: N 140mm/P 285mm(5.51/11.22inches) Landscape: N 1200 mm /P 1200 mm (47.24/47.24 inches) |
| Connector | TS4/MC4 |

TEMPERATURE RATINGS

| | |
|--|-------------|
| NMOT(Nominal Module Operating Temperature) | 41°C (±3°C) |
| Temperature Coefficient of PMAX | -0.37%/°C |
| Temperature Coefficient of VOC | -0.29%/°C |
| Temperature Coefficient of ISC | 0.05%/°C |

MAXIMUM RATINGS

| | |
|-------------------------|----------------|
| Operational Temperature | -40 ~ +85°C |
| Maximum System Voltage | 1000V DC (IEC) |
| Max Series Fuse Rating | 20A |

(DO NOT connect Fuse in Combiner Box with two or more strings in parallel connection)

WARRANTY

10 year Product Workmanship Warranty
25 year Linear Power Warranty
(Please refer to product warranty for details)

PACKAGING CONFIGURATION

Modules per box: 30 pieces
Modules per 40' container: 720 pieces

