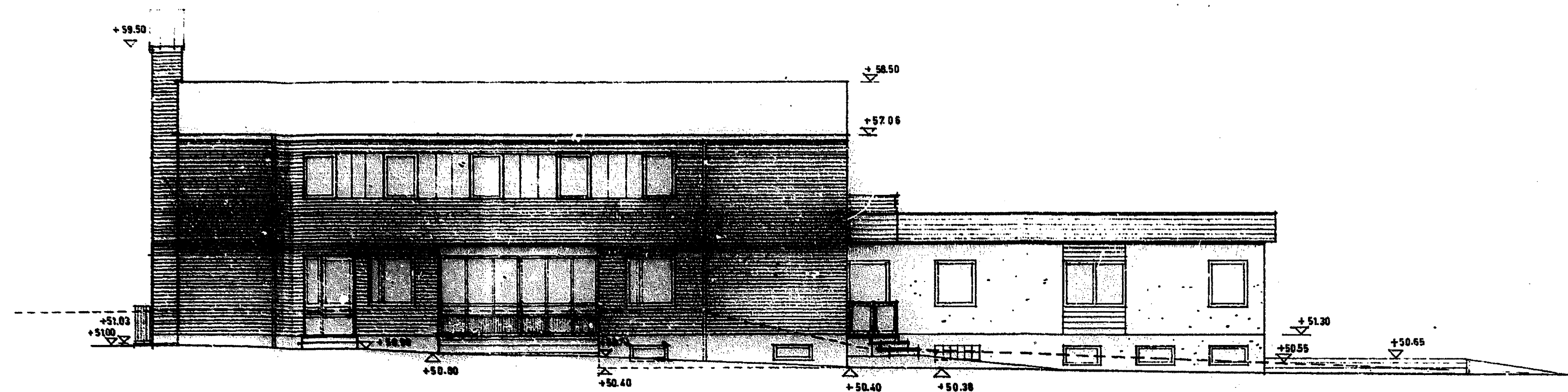
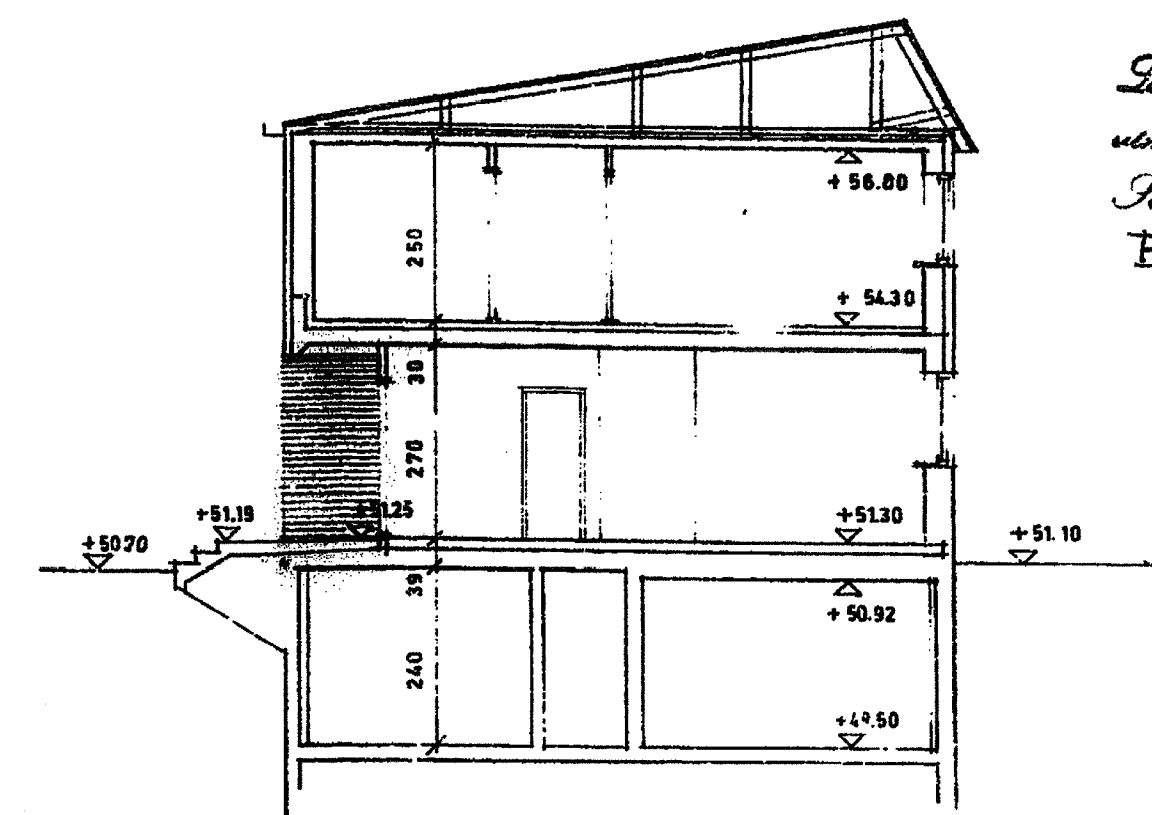


Handwritten notes and signatures at the top right of the page.

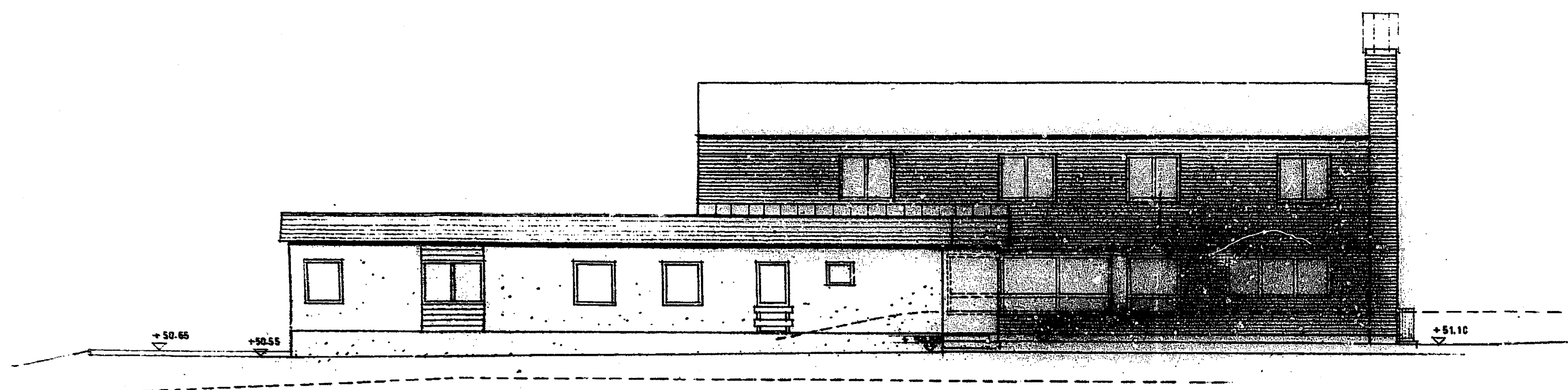


FASAD MOT VÄSTER

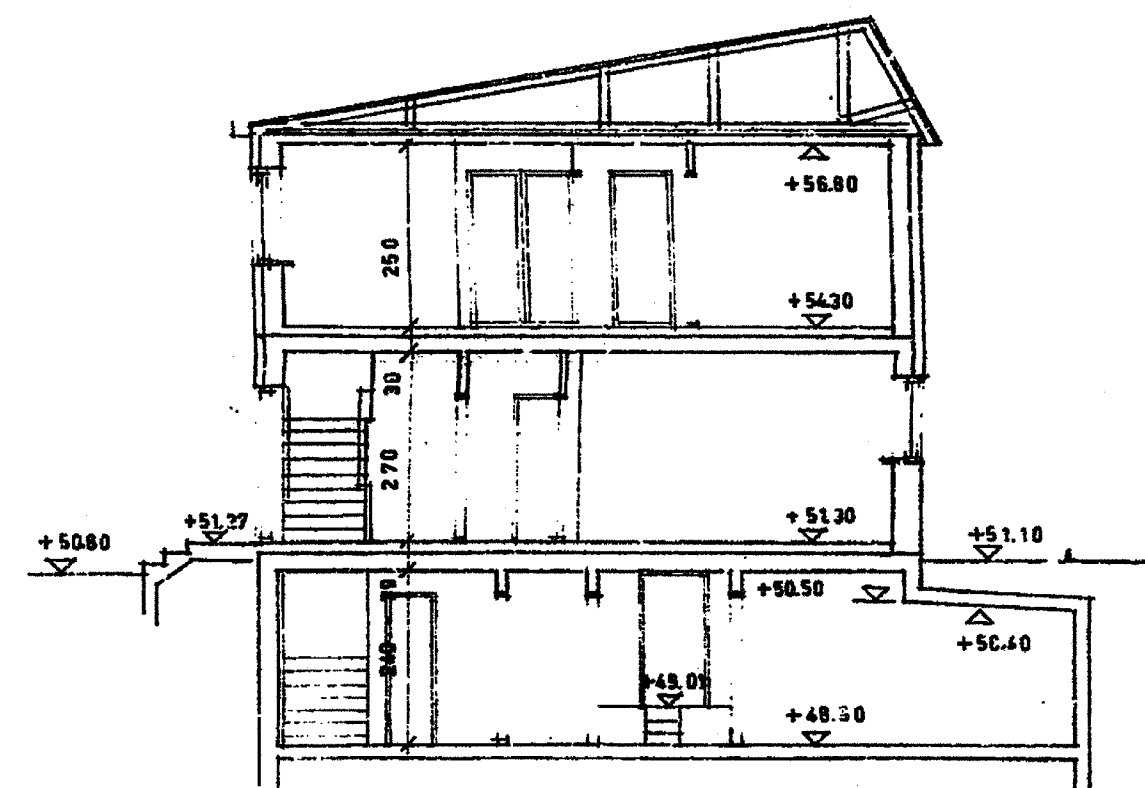


SEKTION A - A

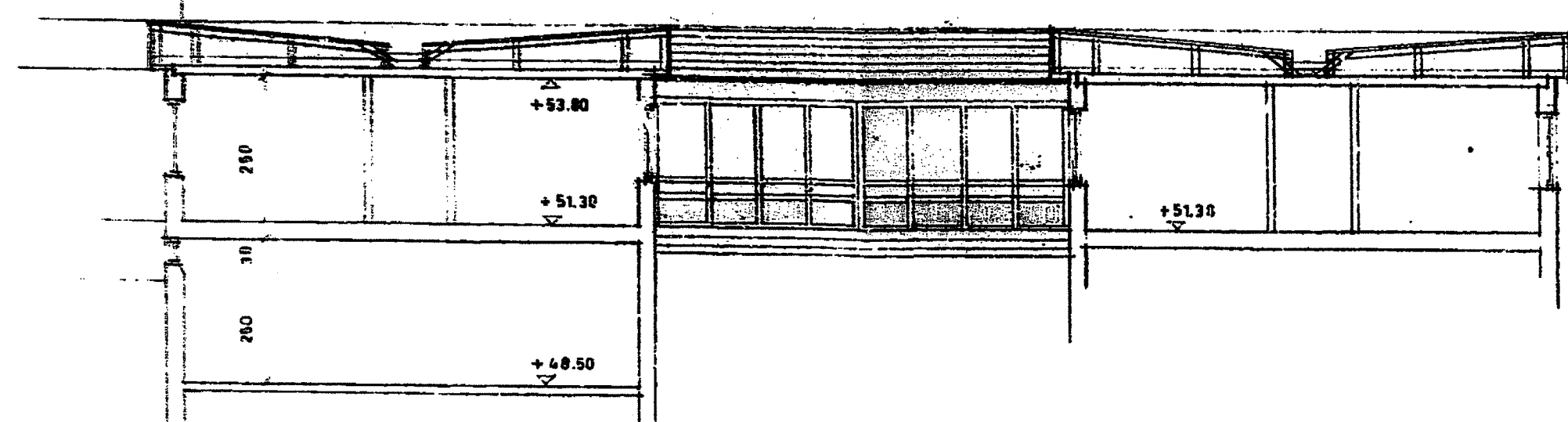
Handwritten notes and a signature next to section A-A.



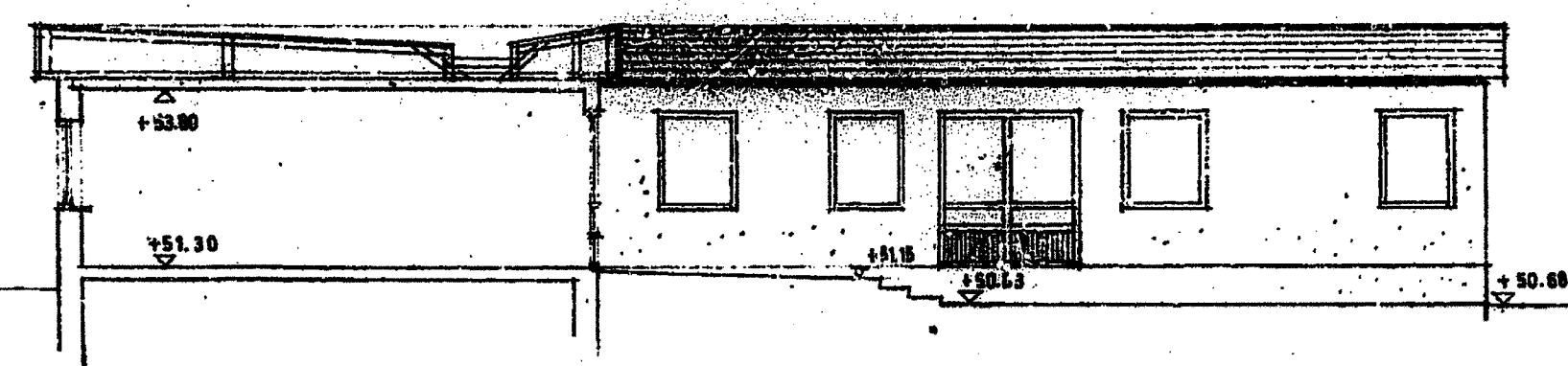
FASAD MOT ÖSTER



SEKTION B - B



SEKTION C - C



SEKTION D - D

FLÖG MARK  
GULVAVÄNDE MARK

KV. TJÄRDALLEN  
FASAD MOT VÄSTER O. ÖSTER + SEKTION  
SKALA 1:100  
STOCKHOLM DEN 27-2-1965  
G. LITSTRÖMS ARKITEKTKONTOR  
*Gustaf Litström*