

# BILAGOR

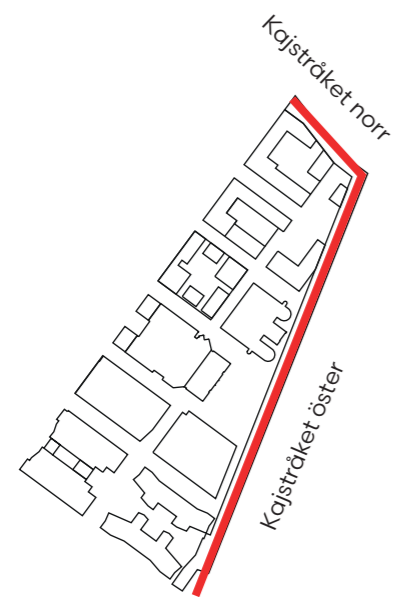
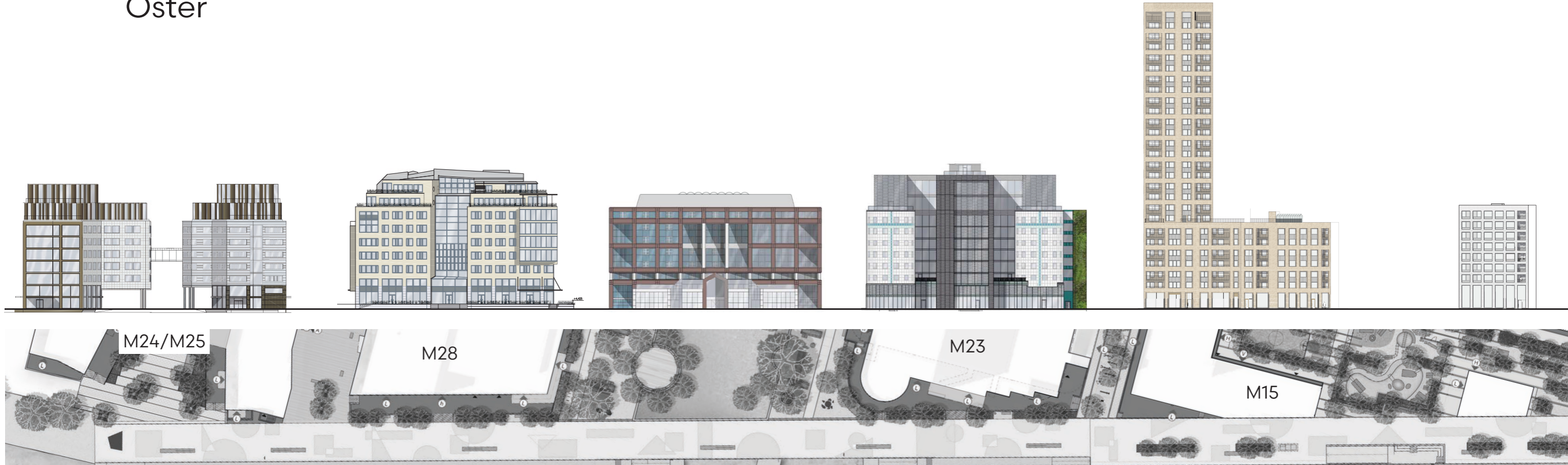
BILAGA 1 - ILLUSTRATIONSPLAN ALLMÄN PLATS



Illustrationsplan allmän plats, AJ landskap

# Kajstråket Öster

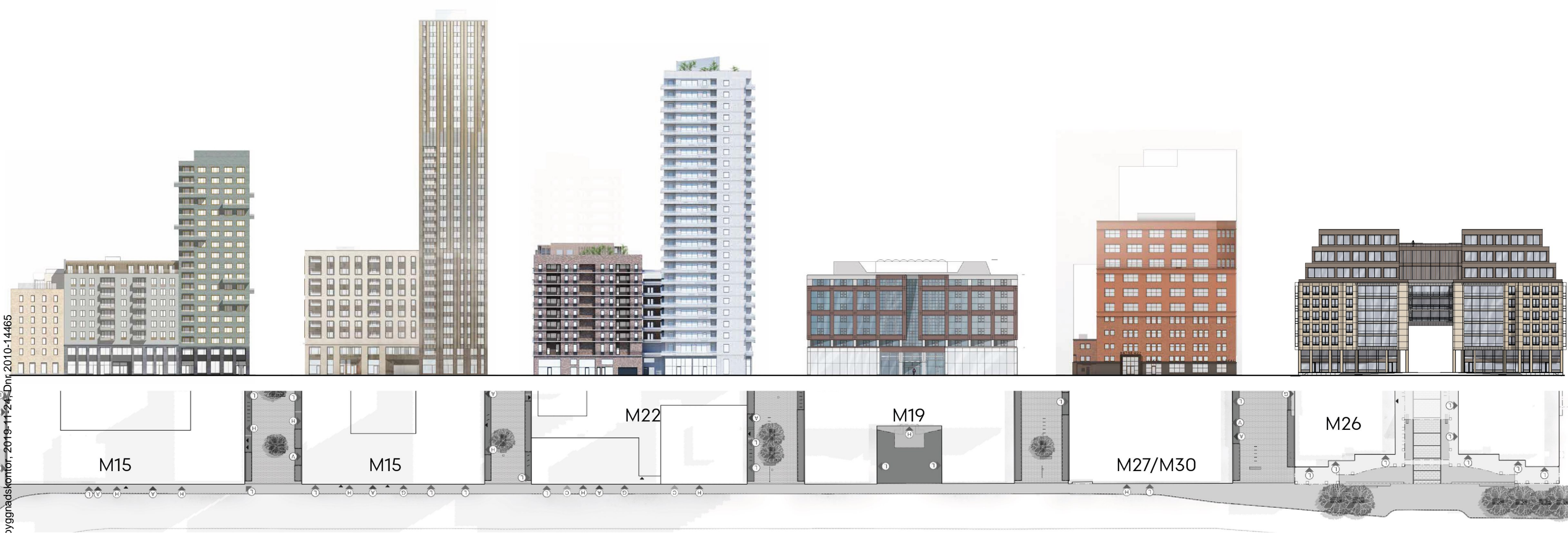
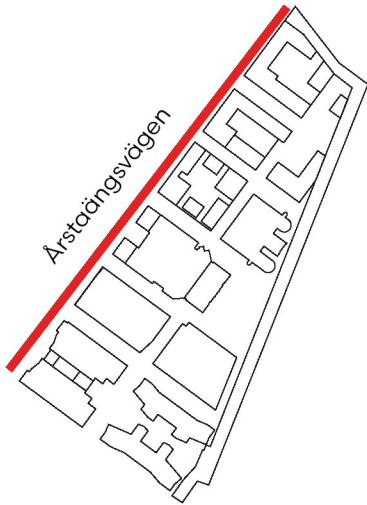
## BILAGA 2 - FASADELEVATIONER



# Kajstråket Norr

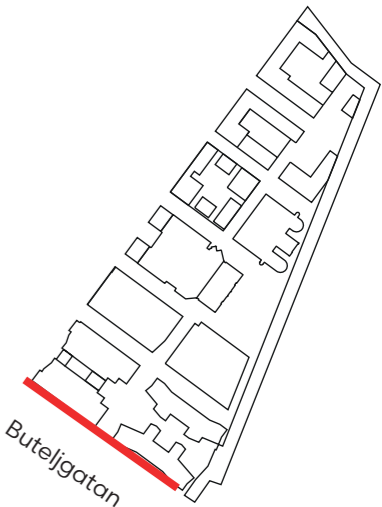
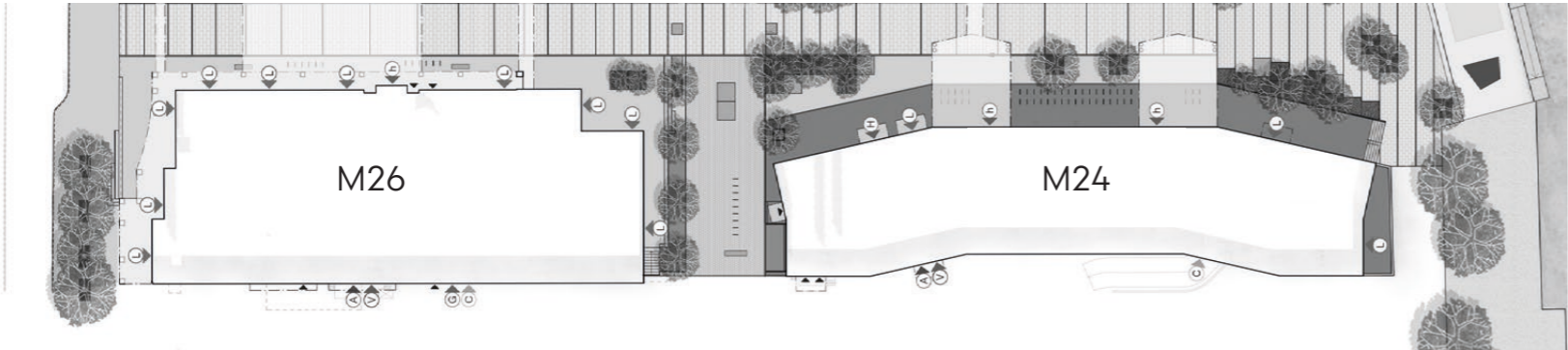


Årstaängsvägen

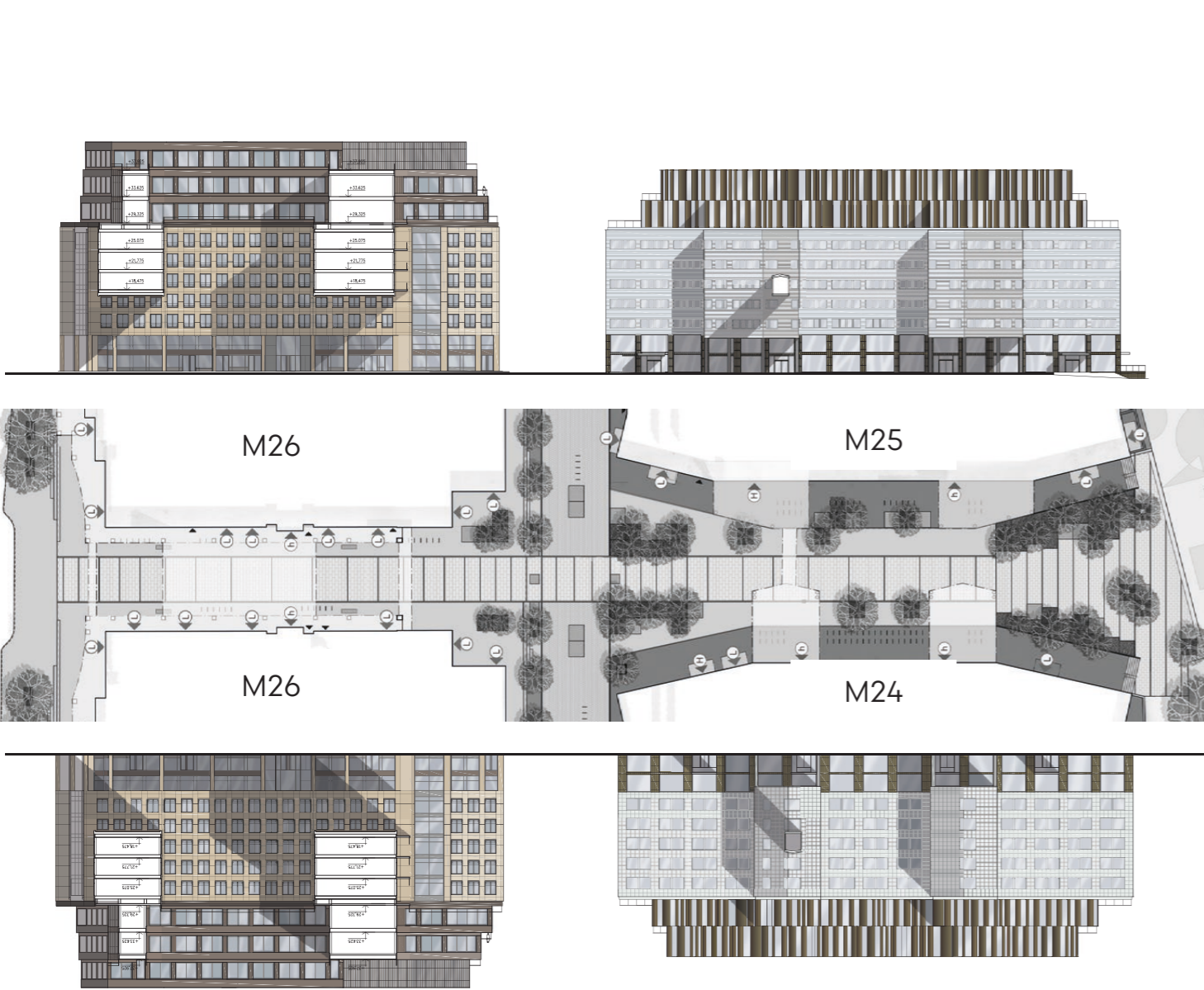


Godkänt dokument - Pia Ölvebro, Stockholms stadsbyggnadskontor, 2019-11-24, Dnr 2010-14465

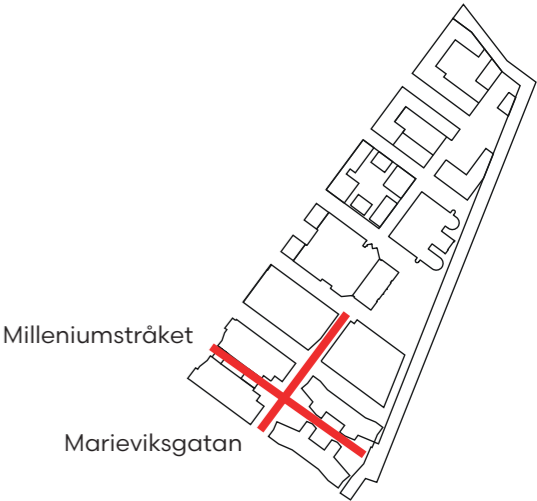
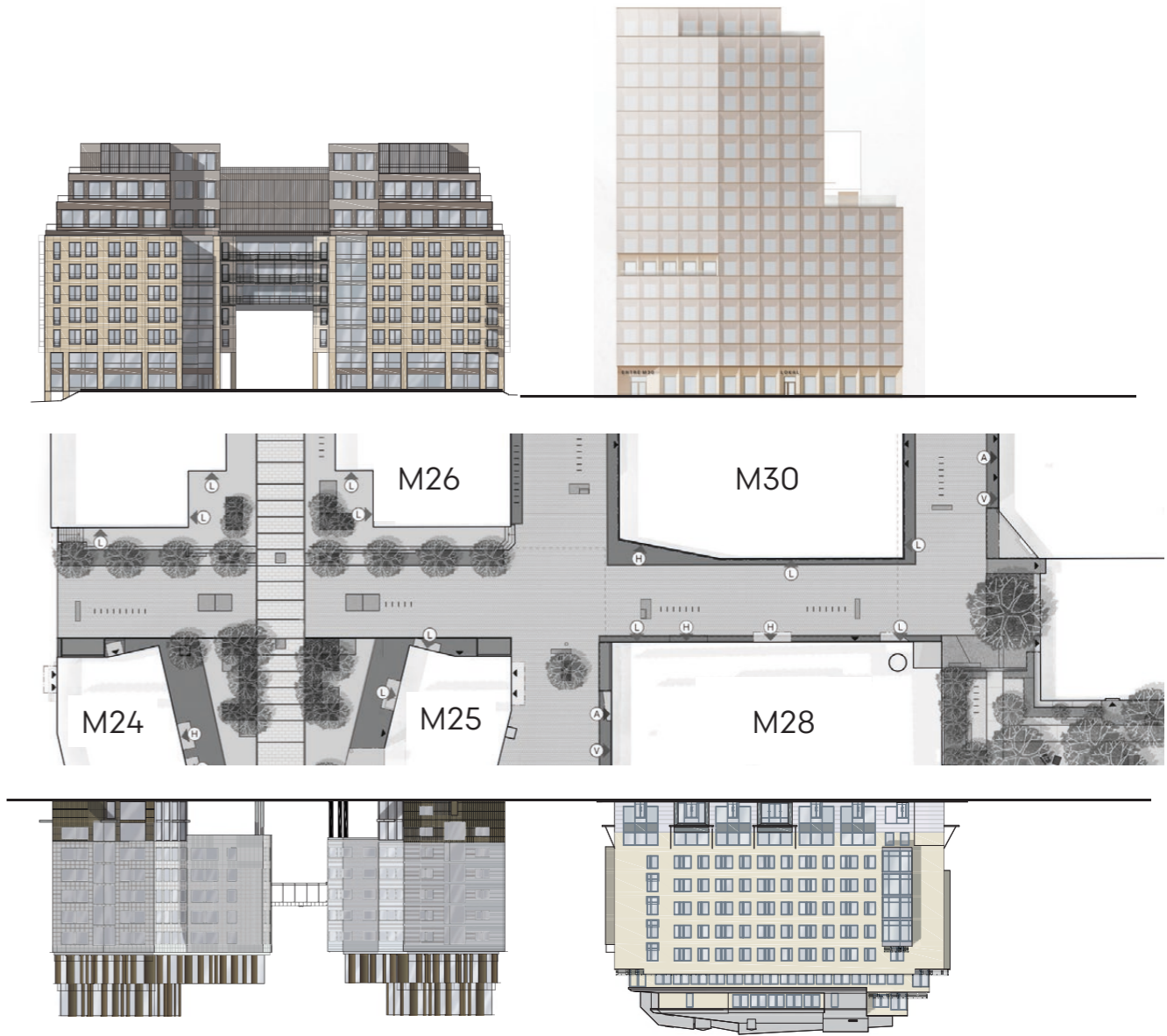
Buteljgatan



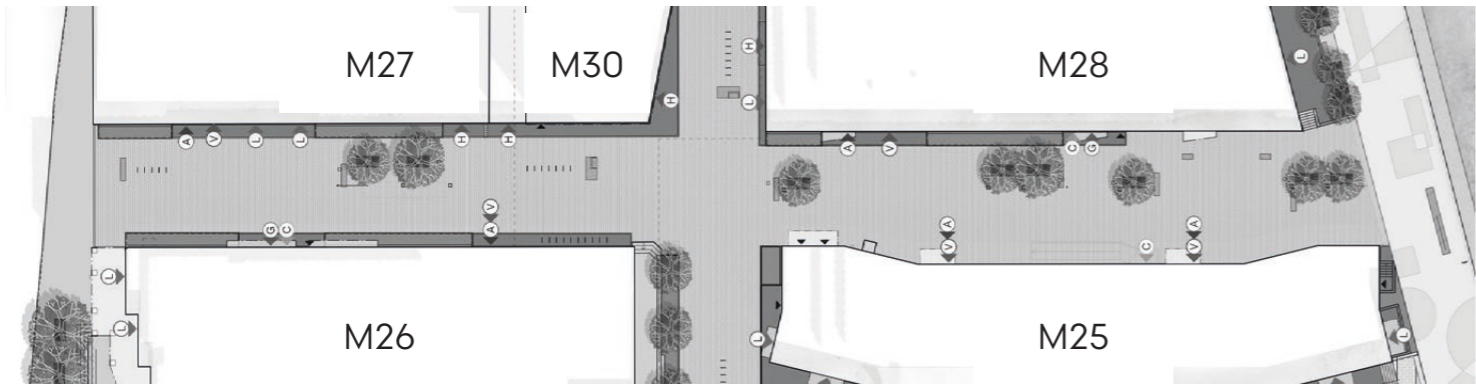
Millenniumstråket



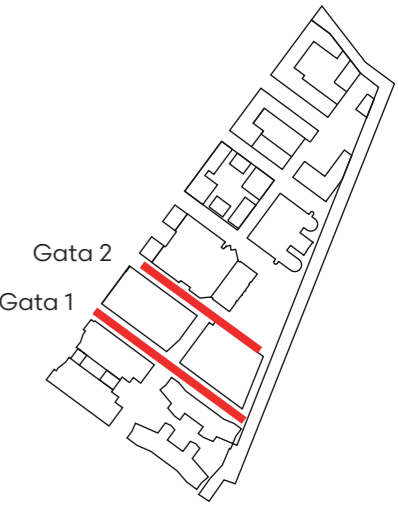
Marieviksgatan



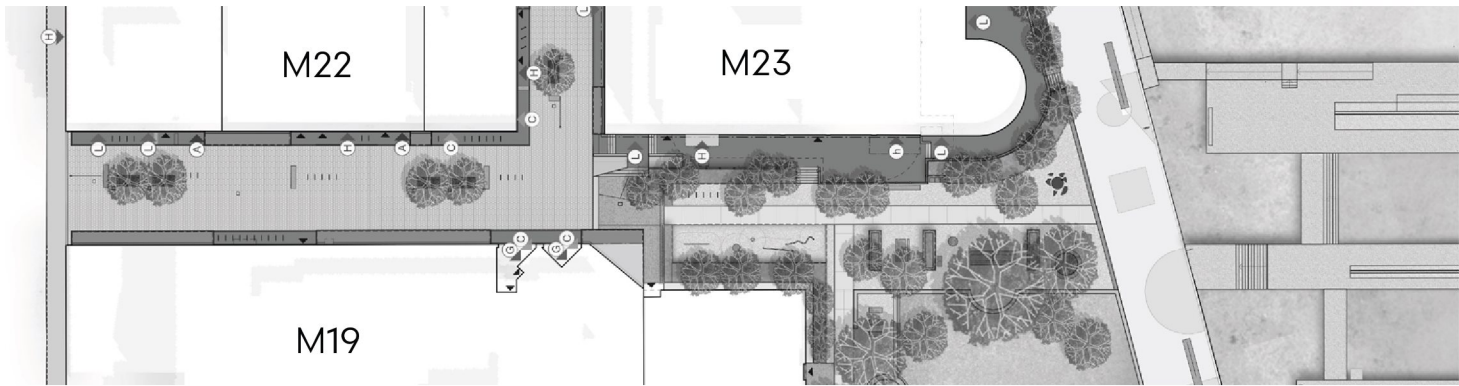
Gata 1



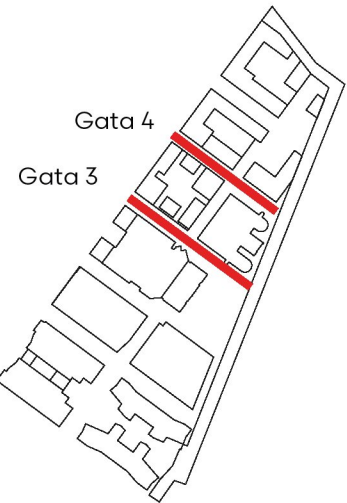
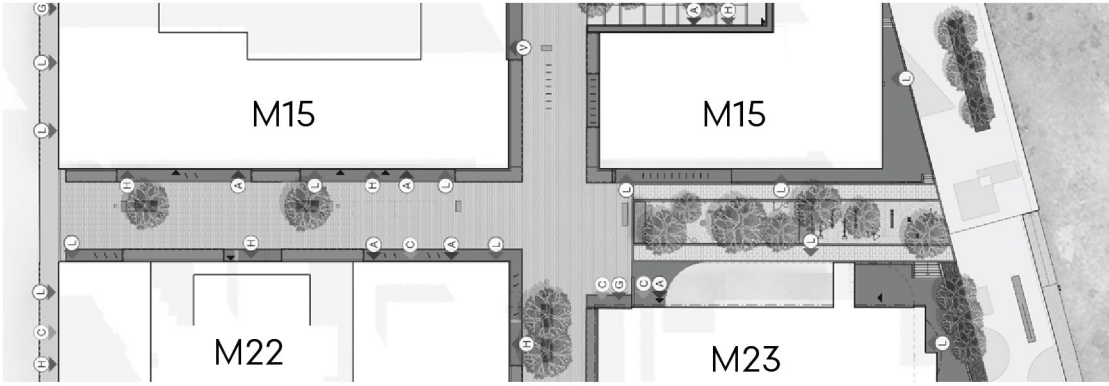
Gata 2



Gata 3

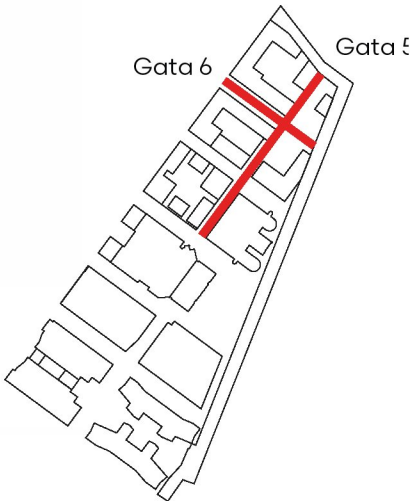
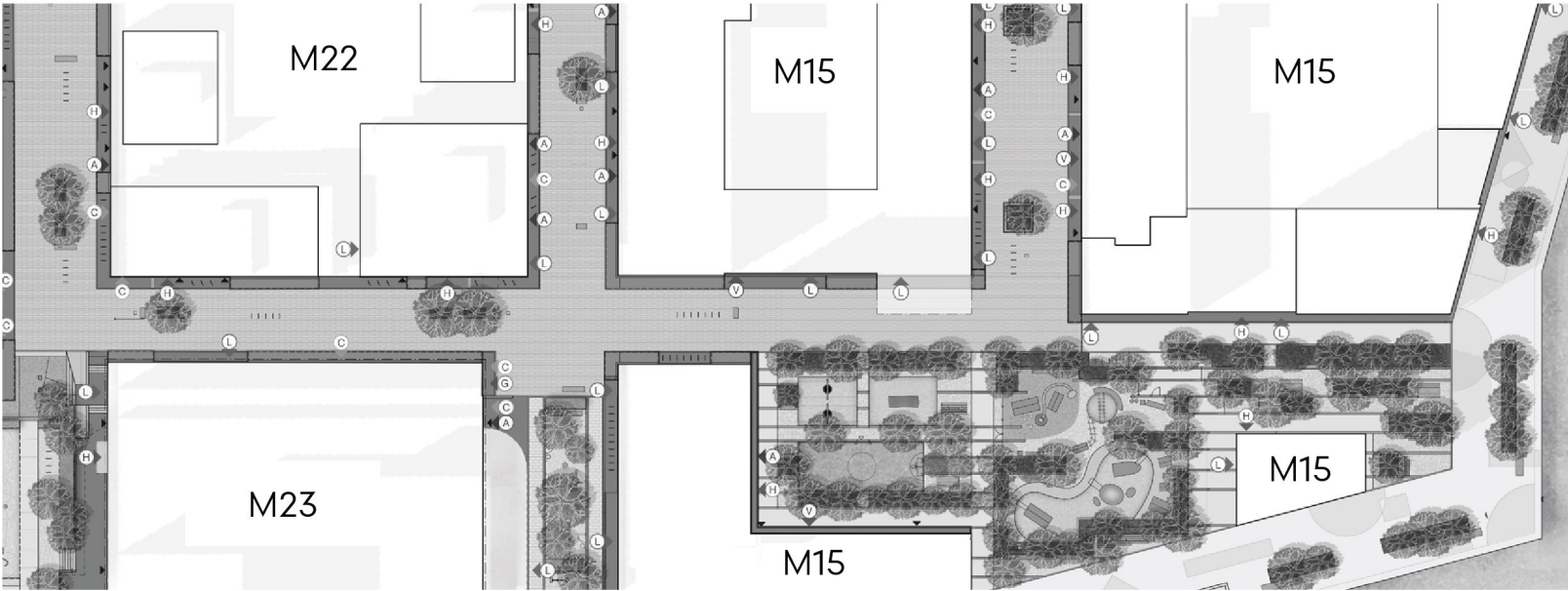
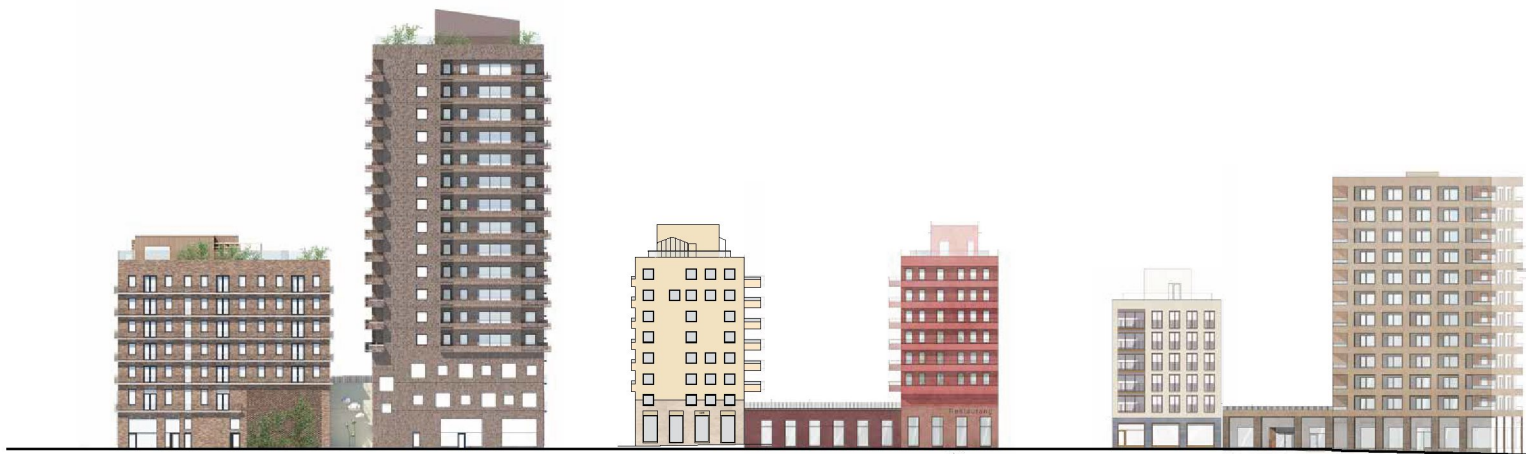


Gata 4




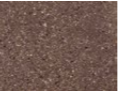



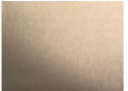










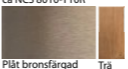

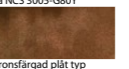

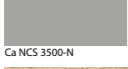

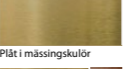
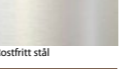
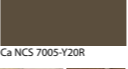
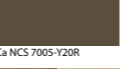
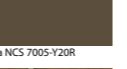
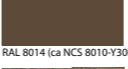



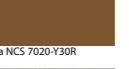



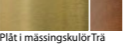

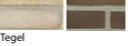
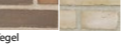
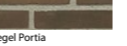
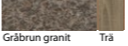
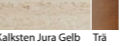
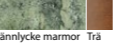


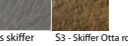


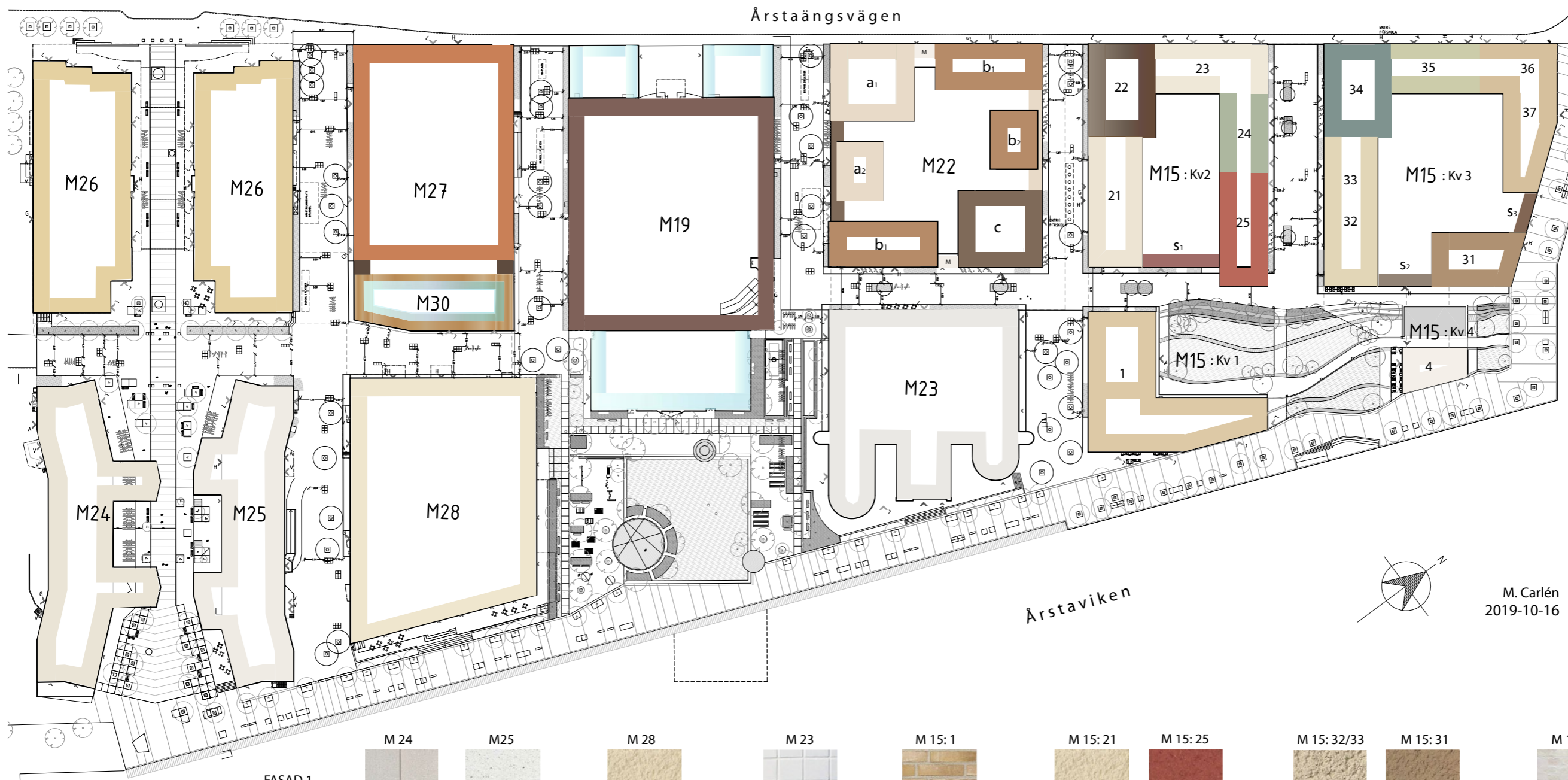
Gata 5

Gata 6


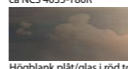





BILAGA 3 - KULÖR OCH MATERIAL

	M 26	M27	M 30	M 19	M 22: a	M 22: b	M 22: c	M 15: 22	M 15: 23	M 15: 24	M 15: 34	M 15: 35	M 15: 36/37
FASAD 1	 Terrazzo ca NCS 2015-Y20R	 Tegel ca NCS 4040-Y50R	 Glas (yttre skikt)	 Terrazzo ca NCS 7010-Y90R	 Tegel lik Tegelmäster Limoux (ca NCS 2005-Y50R)	 Tegel lik Tegelmäster Twilight (ca NCS 4025-Y60R)	 Tegel lik Tegelmäster Portia (ca NCS 6010-Y30R)	 Plåt bronsfärgad med struktur (ca NCS 8010-Y10R)	 Riven ädelputs ljus beige (ca NCS 1505-Y30R)	 Slätputs grön (ca NCS 4010-G60Y)	 Sten grön skiffer (ca NCS 5505-B80G)	 Riven ädelputs grön (ca NCS 3005-G80Y)	 Tegel lik Ströjer B813, Setta Mista (ca NCS 3010-Y30R)
FASAD 2 kompletteringar, fyllningar mm	 Plåt Adapta Silent Ice (ca NCS 5005-Y50R)	 Slammat tegel ca NCS 4030-Y50R	 Trä eller motsvarande material i varm kulör (bakom glas)	 Glas	 M: mellandel - vitt glaserat tegel			 Plåt bronsfärgad ca NCS 8005-Y20R	 Plåt bronsfärgad ca NCS 8005-Y20R			 Bronsfärgad plåt typ Aurubis Nordic Brown	 Puts lik teglet (ca NCS 3010-Y30R)
FÖNSTER	 Ca NCS 3500-N	 Ca NCS 8005-Y50R	 Plåt i mässingskulör	 Rostfritt stål	 Ca NCS 7005-Y20R	 Ca NCS 7005-Y20R	 Ca NCS 7005-Y20R	 RAL 8014 (ca NCS 8010-Y30R)	 RAL 8014 (ca NCS 8010-Y30R)	 RAL 6003 (ca NCS 7010-G50Y)	 ca NCS 4055-Y10R	 ca NCS 7020-Y30R	 ca NCS 7020-Y30R
SOCKELVÄNING	 Terrazzo ca NCS 2010-Y20R	 Puts ca NCS 7005-Y50R	 Plåt i mässingskulörTrä	 Terrazzo ca NCS 5010-Y80R	 Tegel a1- Limoux a2- Portia	 Tegel b1- Twilight b2- Limoux	 Tegel Portia	 Gråbrun granit	 Kalksten Jura Gelb	 Brännlycke marmor	 Mörkgrå skiffer	 Ljus skiffer	 Ljus skiffer S3 - Skiffer Otta rost



M. Carlén  
2019-10-16

	M 24	M25	M 28	M 23	M 15: 1	M 15: 21	M 15: 25	M 15: 32/33	M 15: 31	M 15: 4
FASAD 1	 Terrazzo ca NCS 2502-Y	 Terrazzo ca NCS 1502-Y	 Puts målas ljus ockra NCS 1510-Y30R	 Kakel ca NCS 1002-R	 Tegel lik Tegelmäster Light Coal (ca NCS 2015-Y30R)	 Riven ädelputs ljus ockragul (ca NCS 1510-Y30R)	 Riven ädelputs oxdröd (ca NCS 4035-Y80R)	 Riven ädelputs beige (ca NCS 2010-Y20R)	 Riven ädelputs brunbeige (ca NCS 4015-Y50R)	 Släckskurat tegel (ca NCS 1002-Y50R)
FASAD 2 kompletteringar, fyllningar mm	 Plåt typ FMH Bronze Satin	 Plåt typ FMH Bronze Satin		 Plåt typ Imarsa Splash	 Guldfärgad aluminium	 Högblank plåt/glas i röd ton			 Plåt typ FMH Cannon bronze Mirror	 Glas mörkgrått
FÖNSTER	 Rostfritt stål	 Rostfritt stål	 Målas ljus grå ca NCS 3502-Y	 Rostfritt stål Ljust grå NCS 3502-Y	 Silverfärgad aluminium	 Ljus ockragul ca NCS 1510-Y30R	 RAL 3009 (ca NCS 6030-Y80R)	 ca NCS 4050-Y20R	 RAL 8019 (ca NCS 8005-Y50R)	 Silverfärgad aluminium
SOCKELVÄNING	 Glaserad skiftande brun keramik typ Lidköping 119	 Glaserad skiftande brun keramik typ Lidköping 119	 Ljus grå krysshamrad granit	 Grön fasad typ Greenwork Outdoor	 Granit	 Kalksten Jura Gelb	 flammad Älvdalskvartsit S1 - råklad	 Ljusgrå skiffer	 Kalksten brungrå - trä även S2	 Ljus granit

