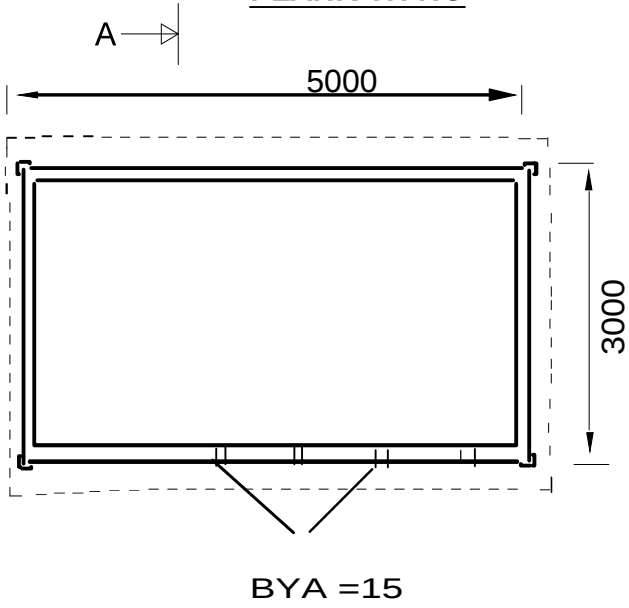
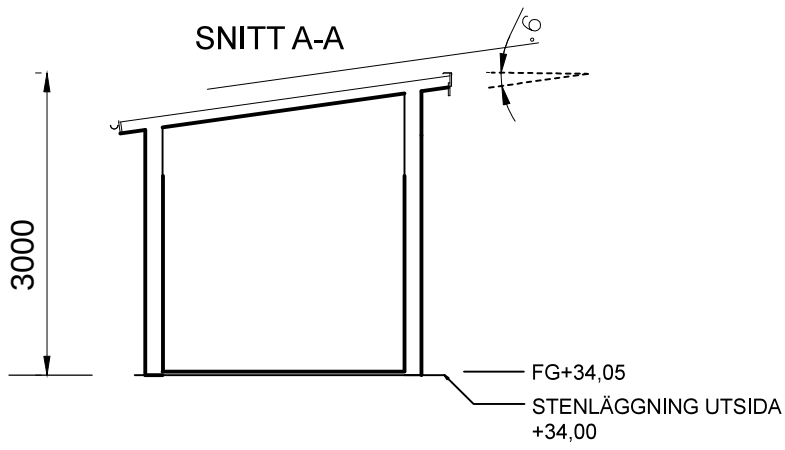


SKALA 1:100

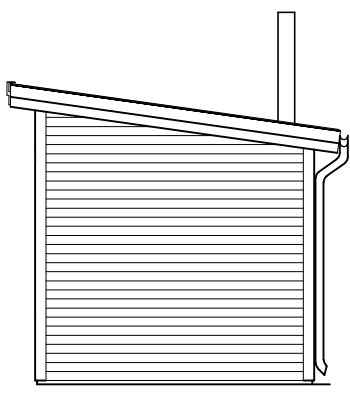
PLANRITNING



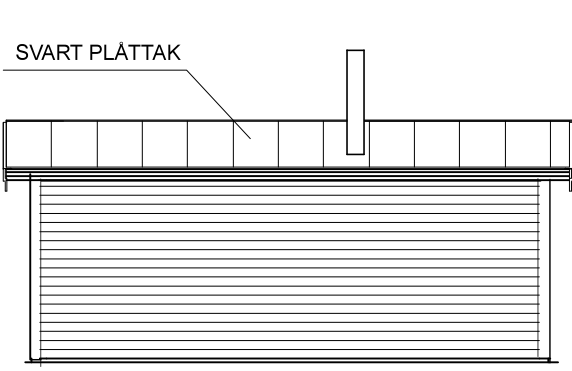
SEKTIONS-RITNING



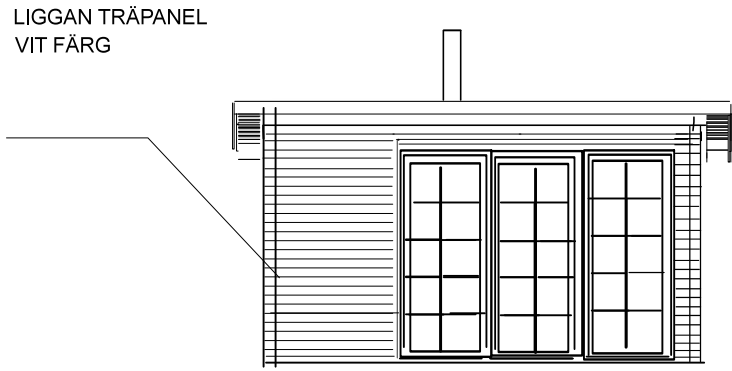
FASAD-RITNING



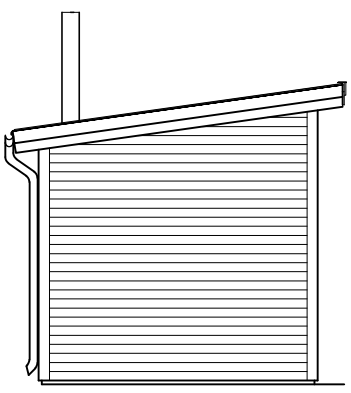
FASAD-RITNING




FASAD-RITNING



FASAD-RITNING



| | | | | | |
|---|------------------------|--------------------------------|---|---------------------|----------------|
| Konstruerad av Jörgen Molander | Kontrollerad av BJM | Godkänd av BJM - 05/04/2019 | Filnamn MÅRDVÄGEN 14.DWG | Datum 05/04/2019 | Skala 1:100 |
|  J.MOLANDER KONSULT | | | ATTEFALLSHUS MÅRDVÄGEN 14 KV. ELDTÅNGEN 6 BROMMA | | |
| | | | A01 | | Upplaga 1 |
| | | | Blad 1(1) | | |