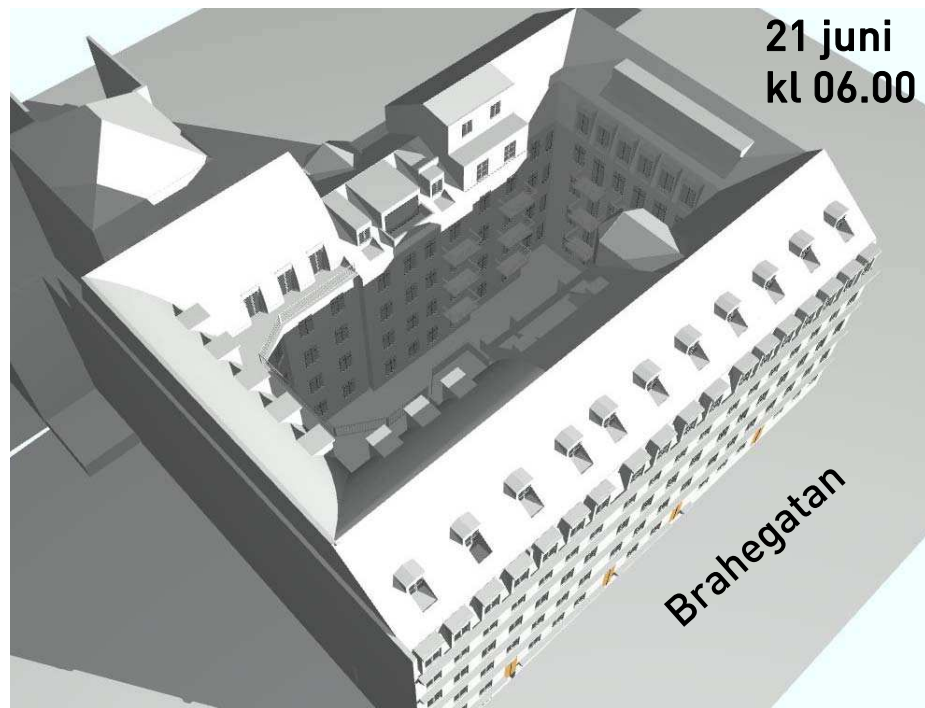


JE ÖSTERLING FÖRVALTNING AB

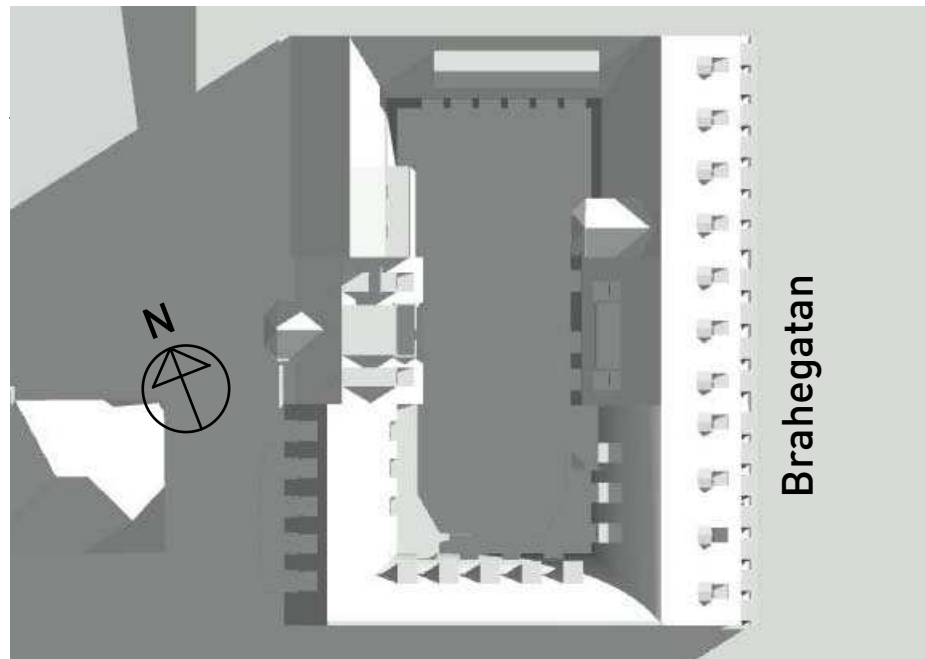
BEFINTLIG SITUATION - KV HUMLEGÅRDEN 49

SOLSTUDIE 2016 08 24

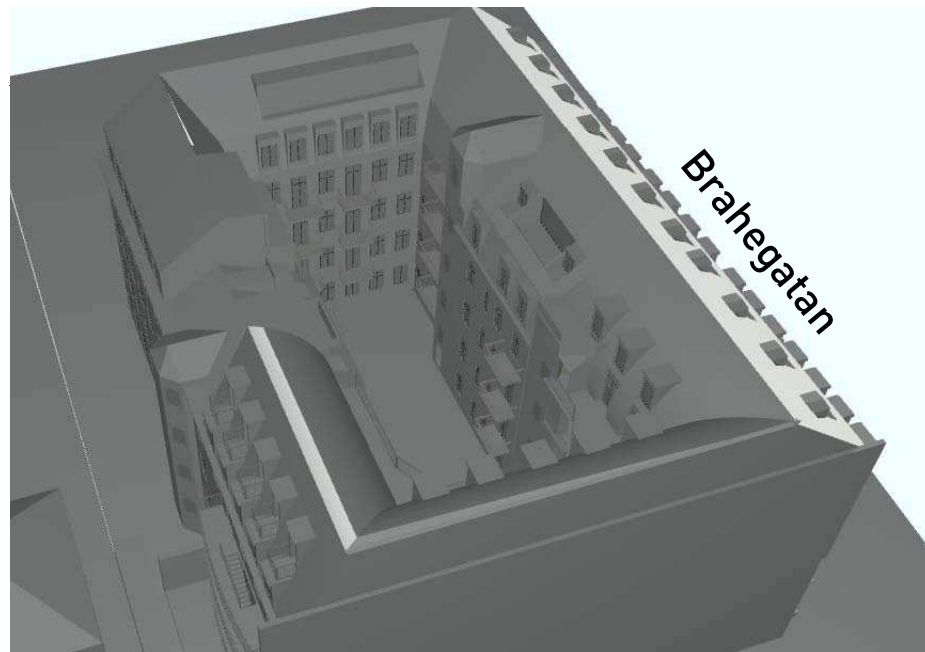


21 juni
kl 06.00

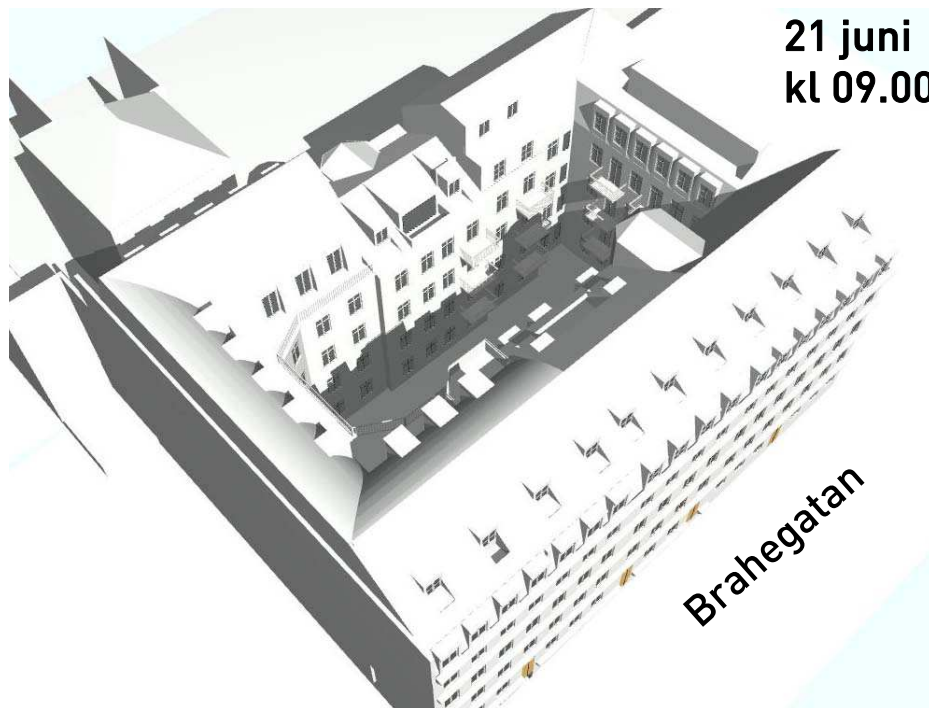
Brahegatan



Brahegatan

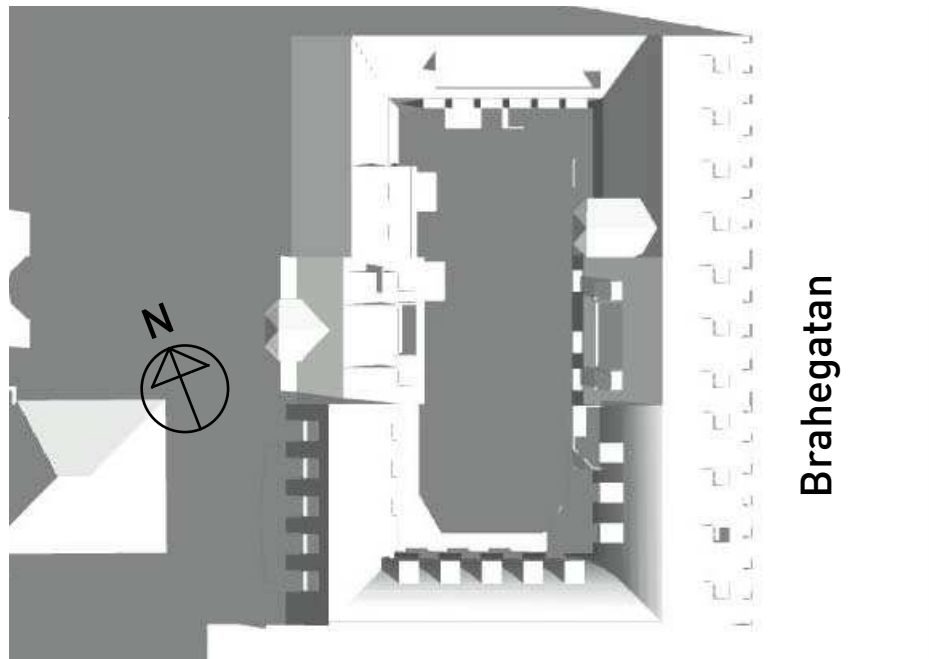


Brahegatan

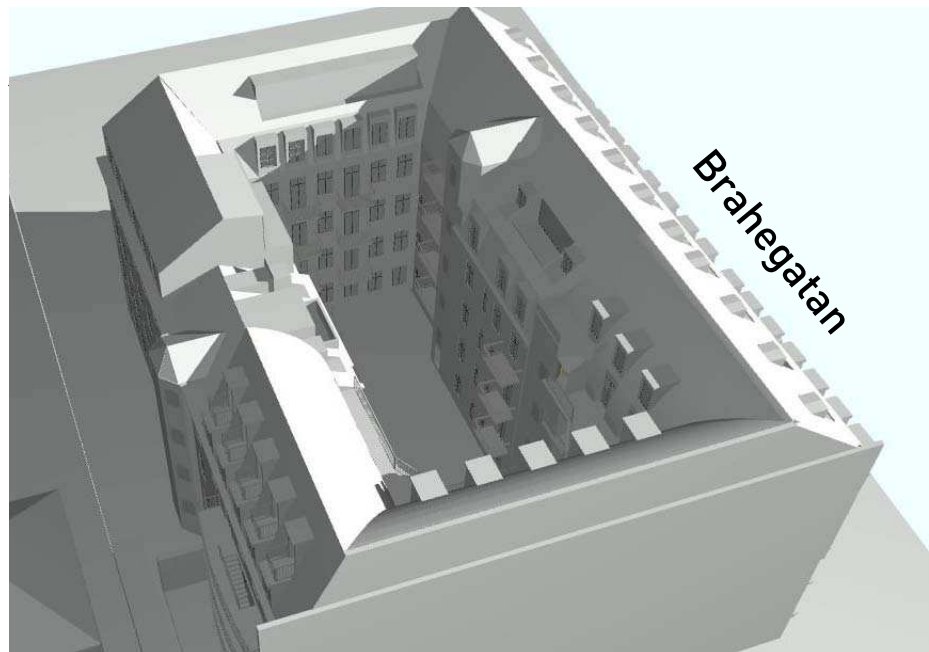


21 juni
kl 09.00

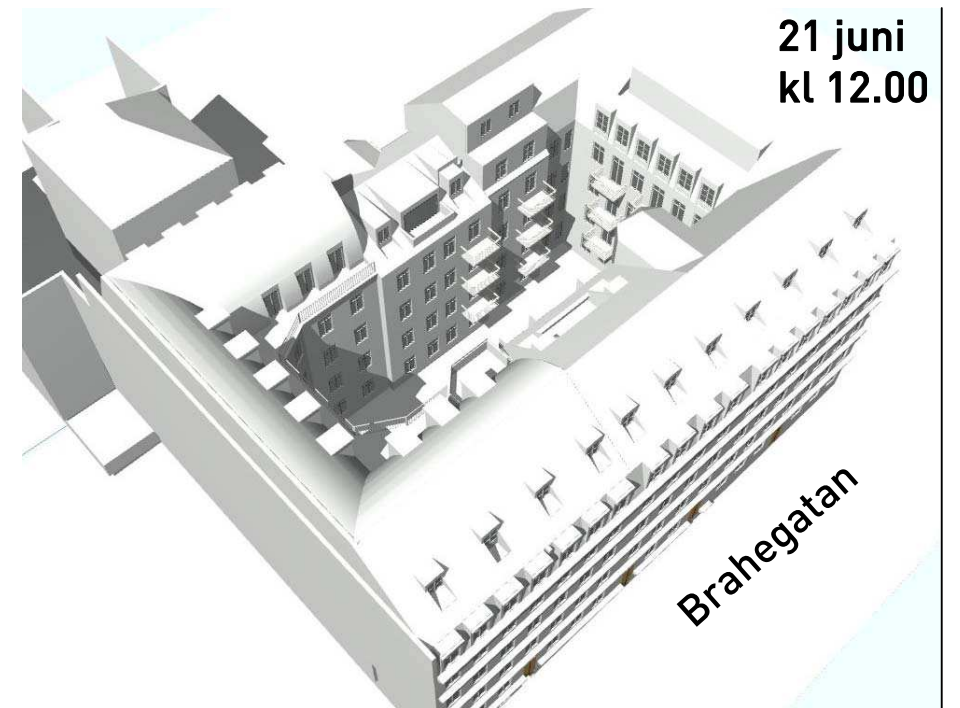
Brahegatan



Brahegatan

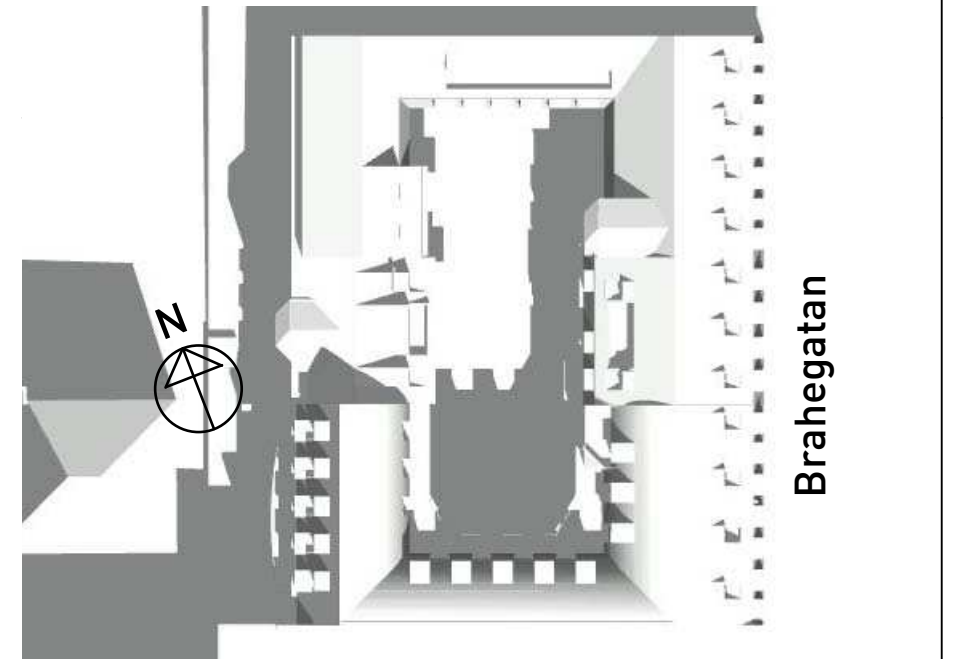


Brahegatan

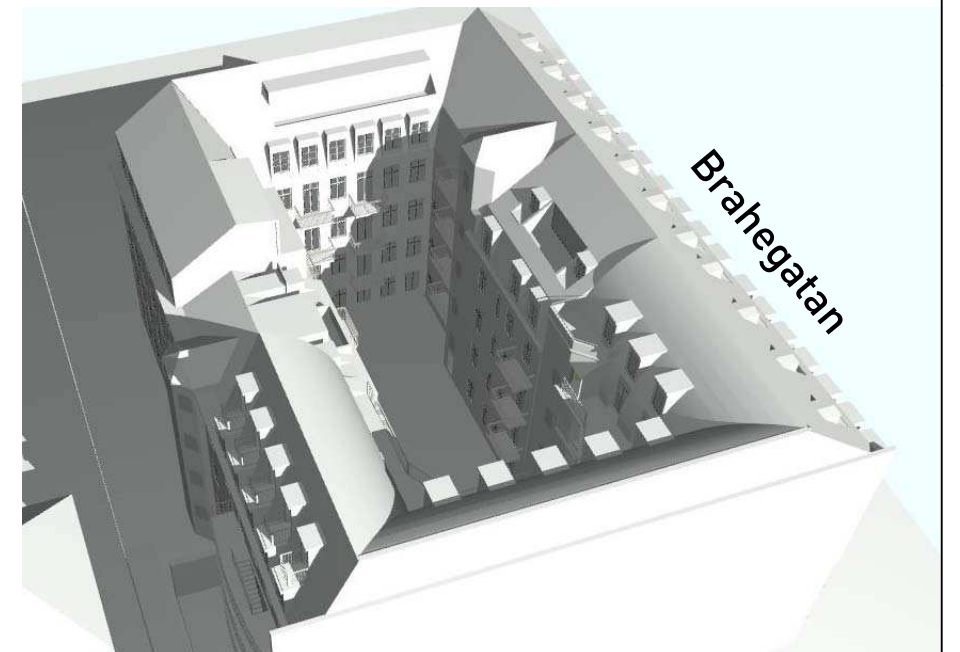


21 juni
kl 12.00

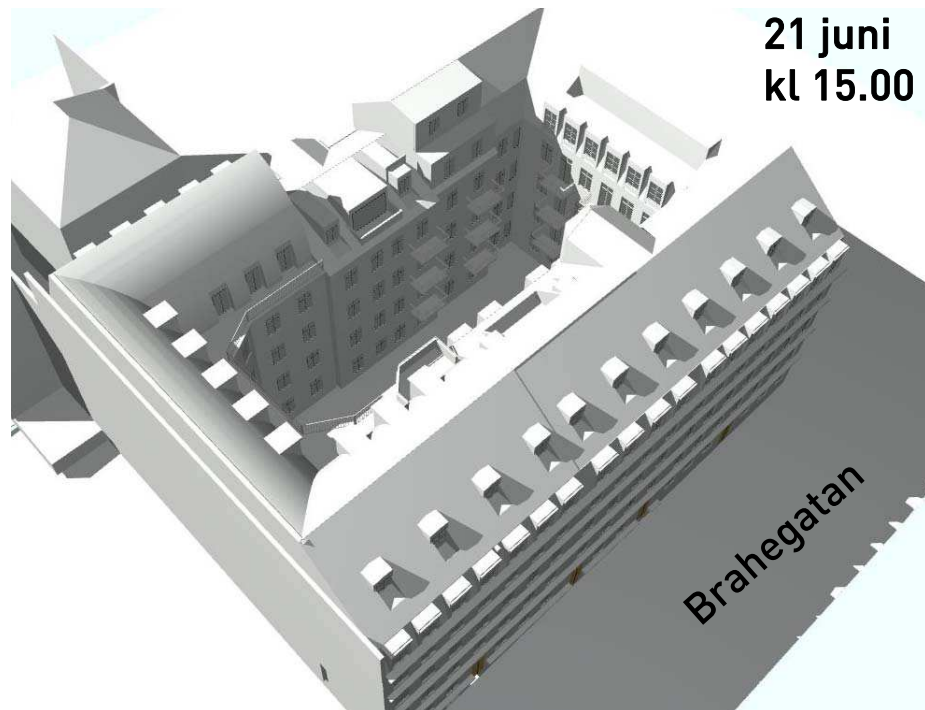
Brahegatan



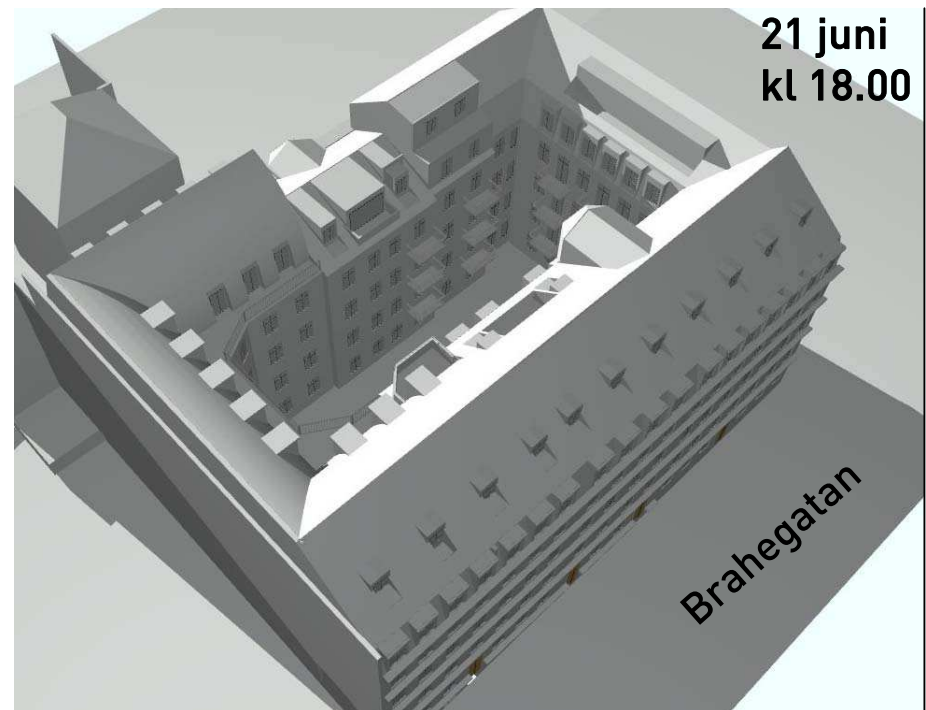
Brahegatan



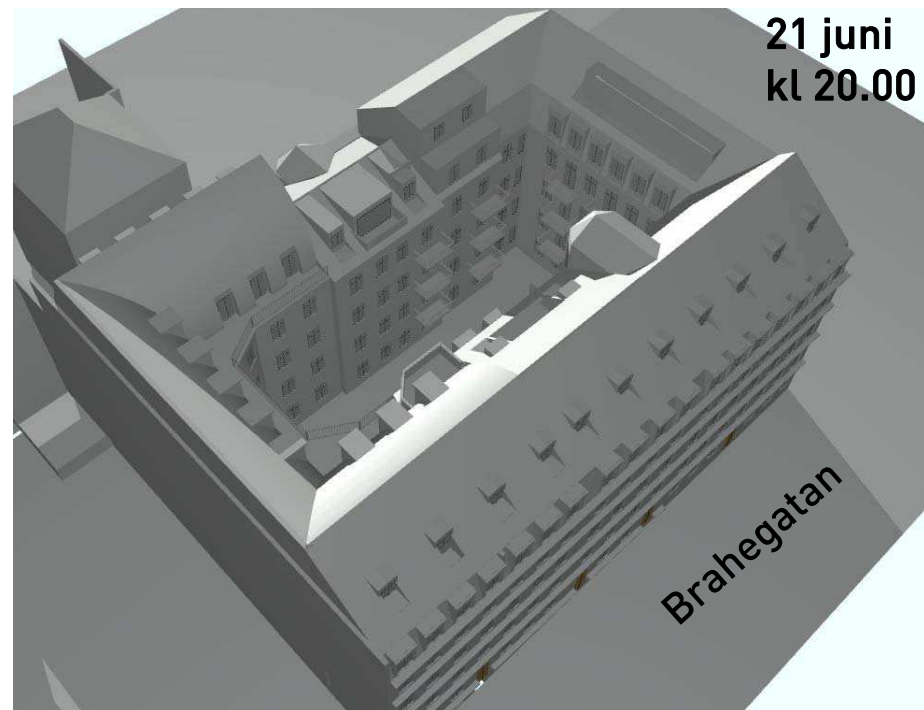
Brahegatan



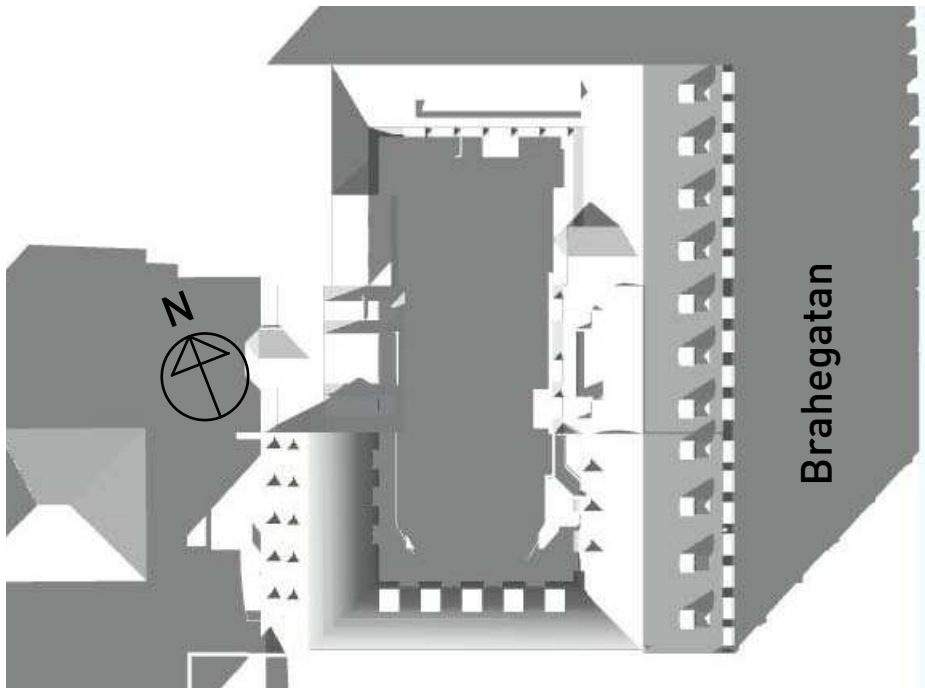
21 juni
kl 15.00



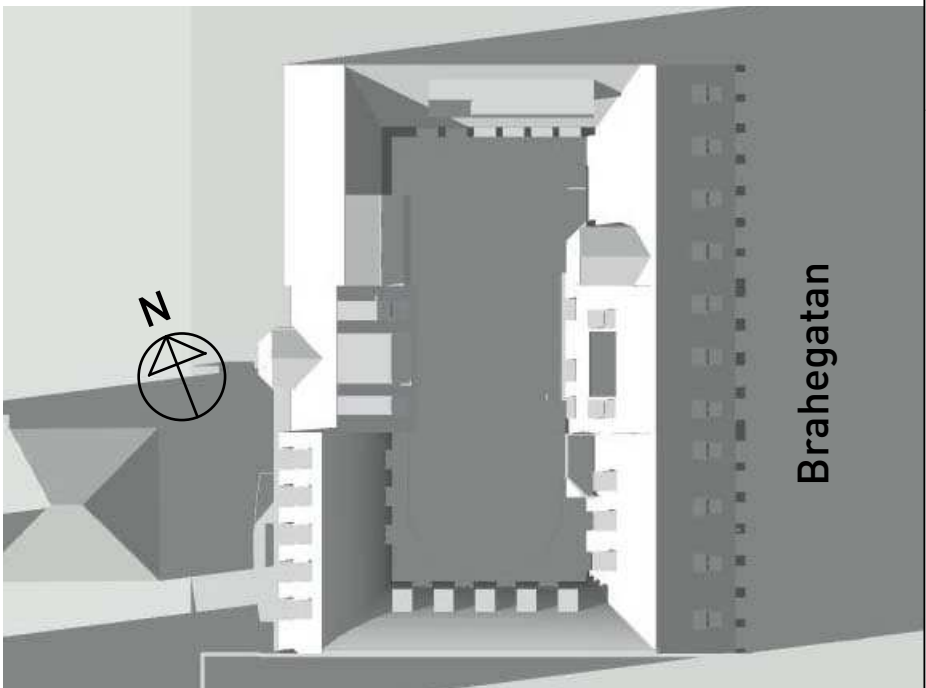
21 juni
kl 18.00



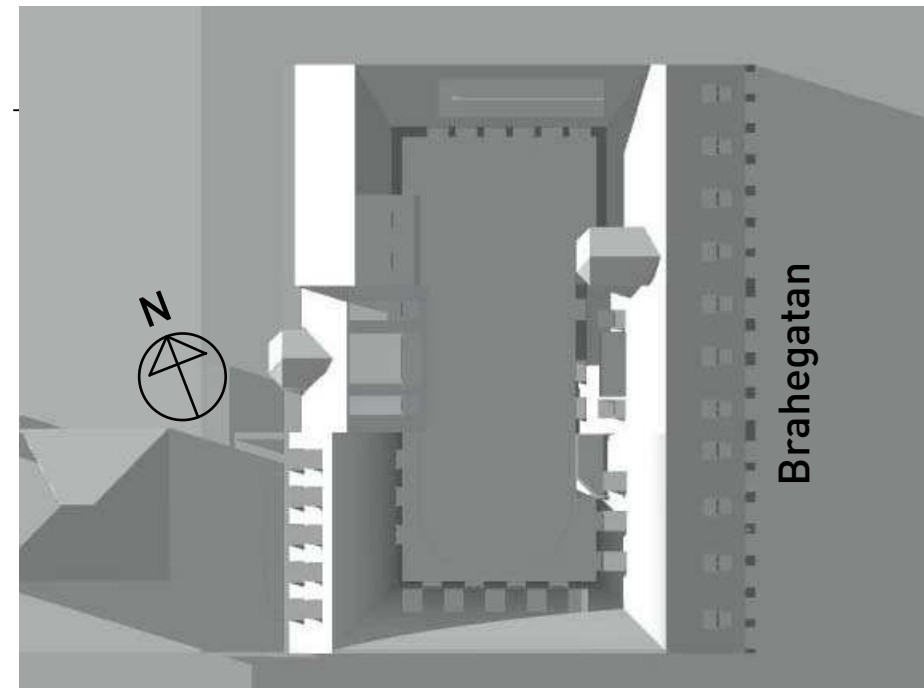
21 juni
kl 20.00



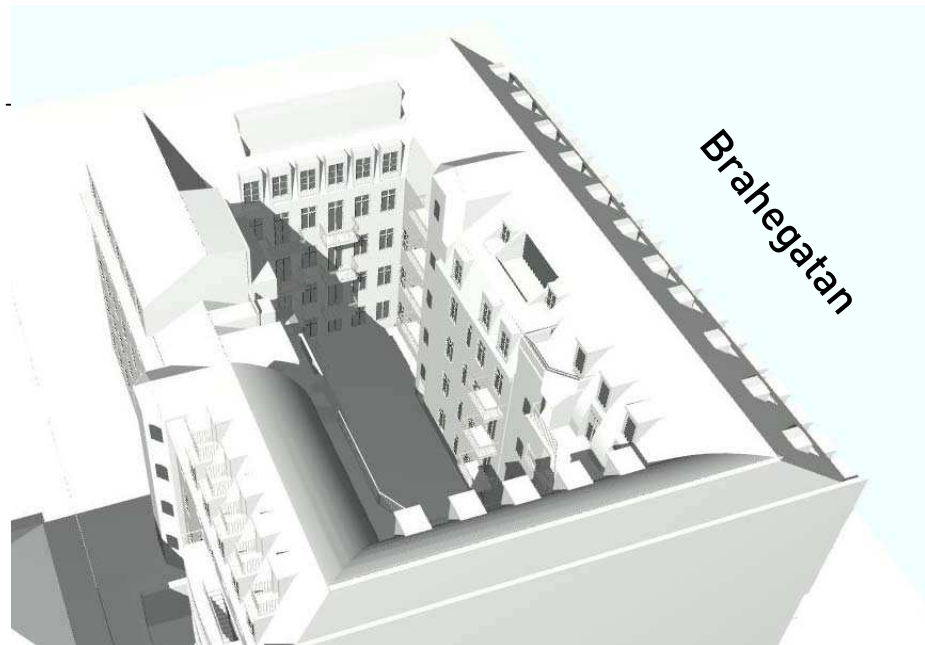
Brahegatan



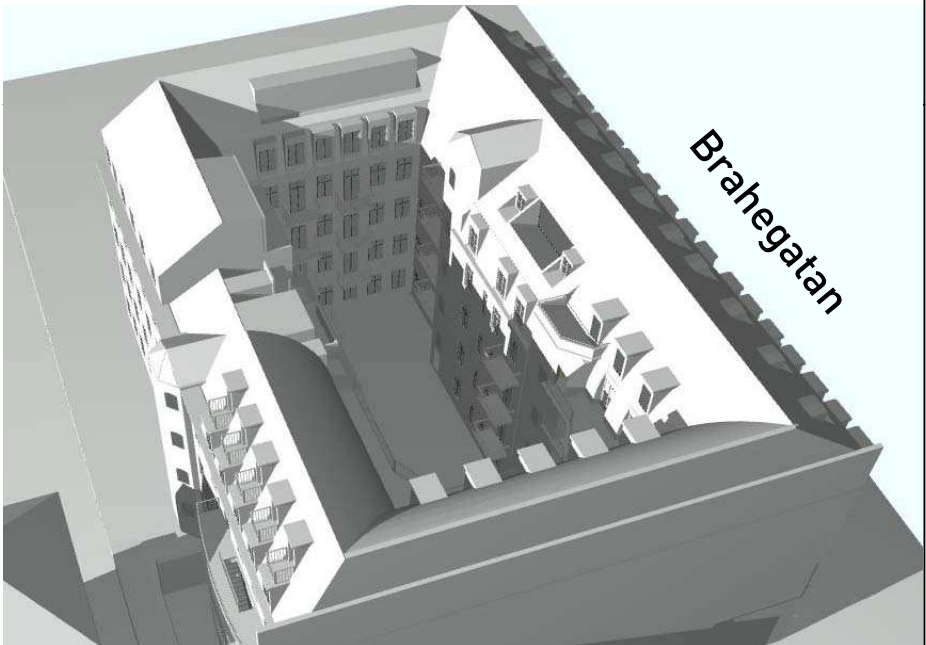
Brahegatan



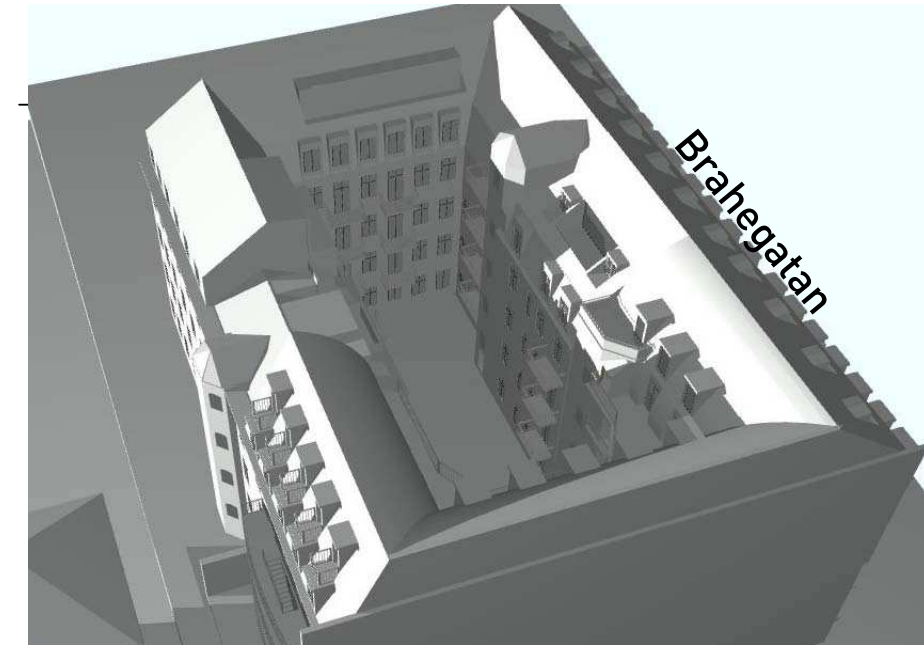
Brahegatan



Brahegatan



Brahegatan



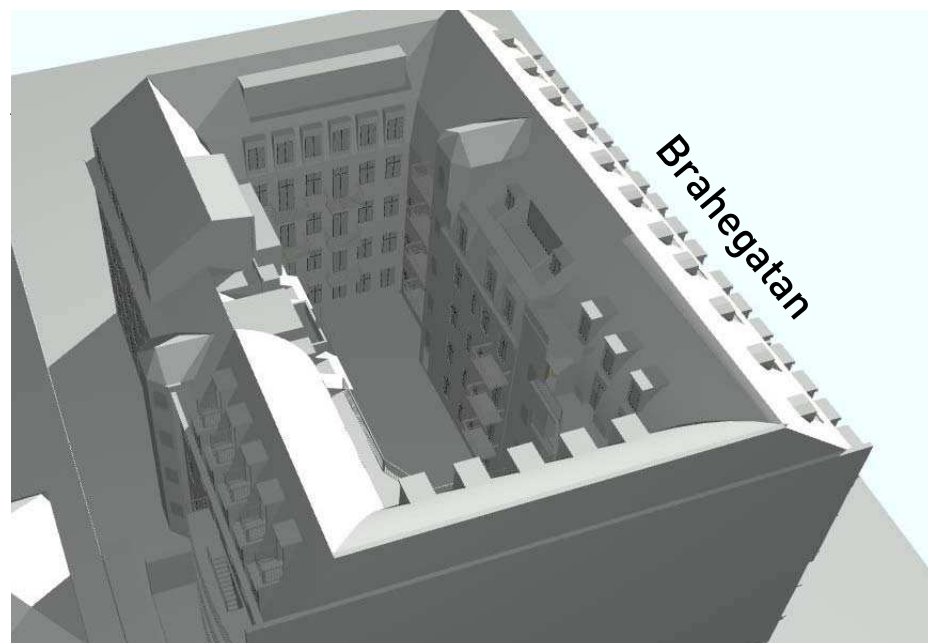
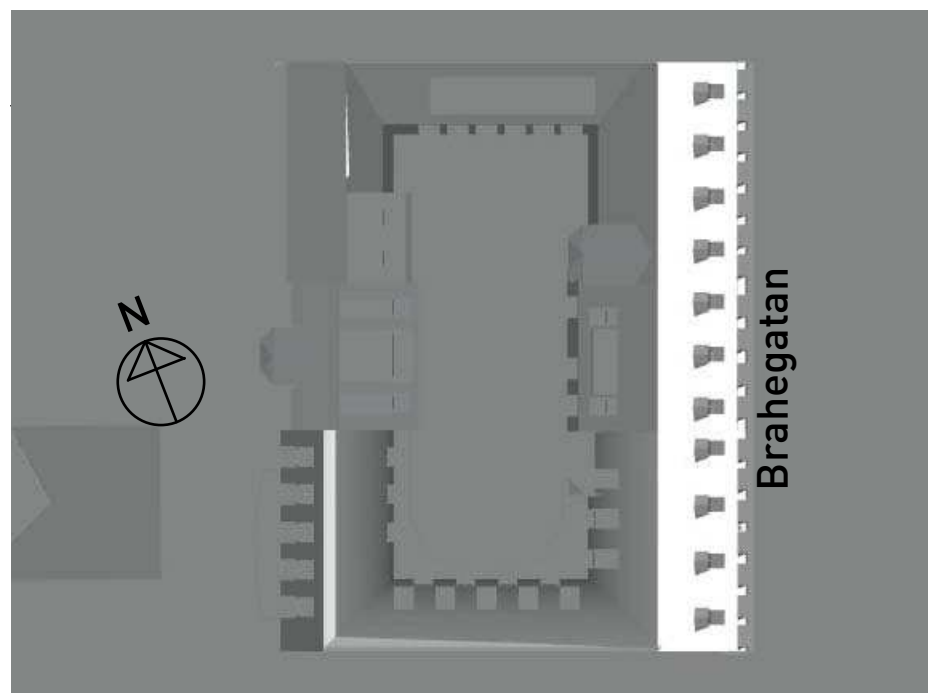
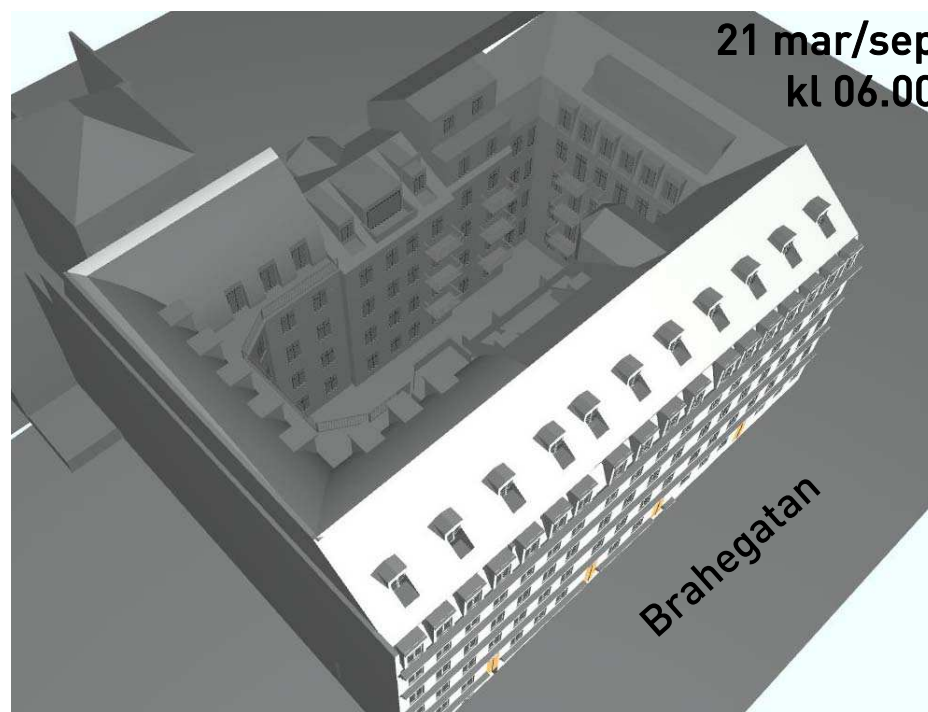
Brahegatan

JE ÖSTERLING FÖRVALTNING AB

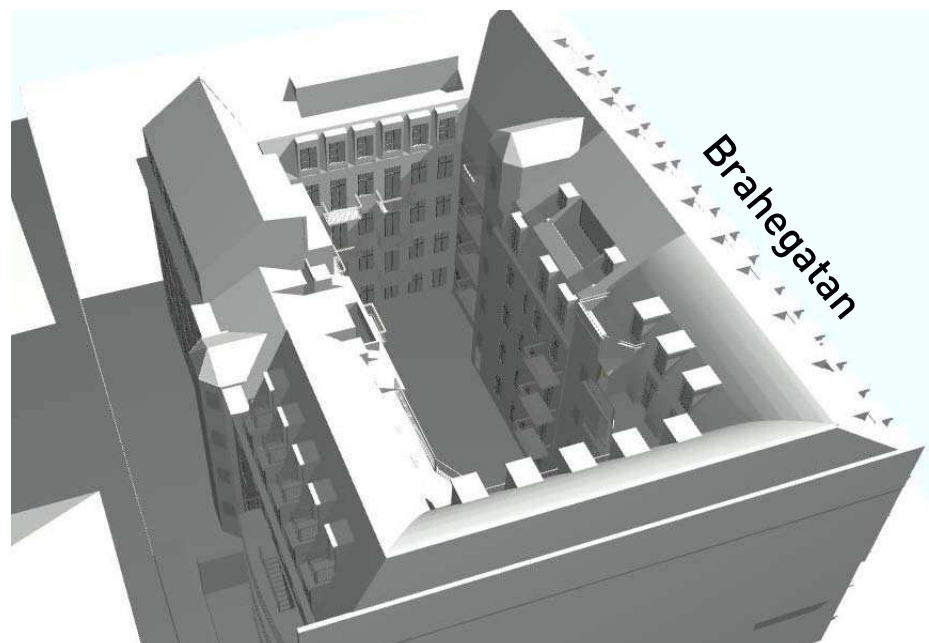
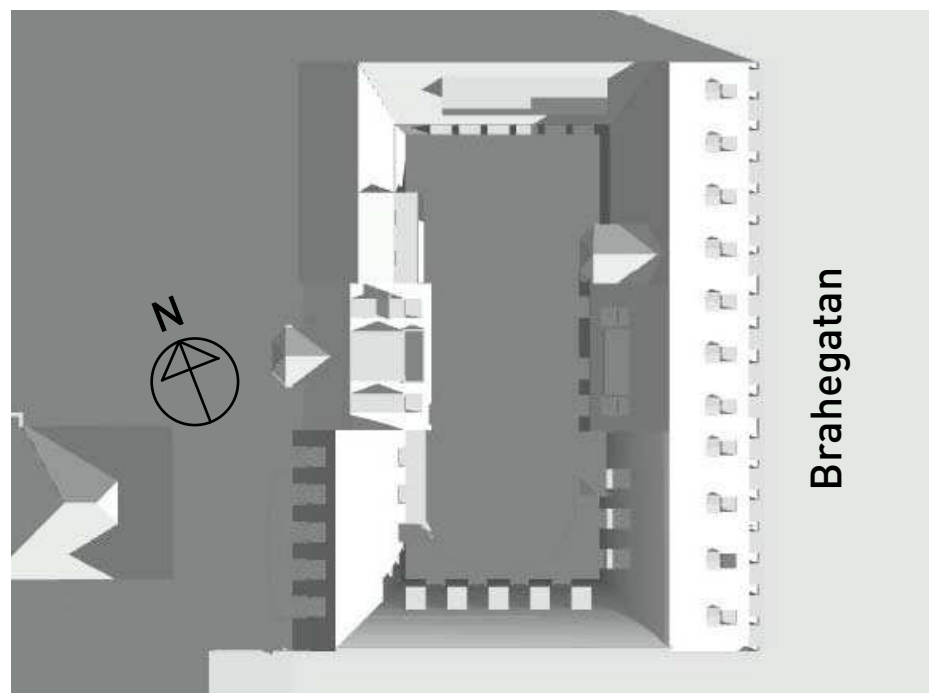
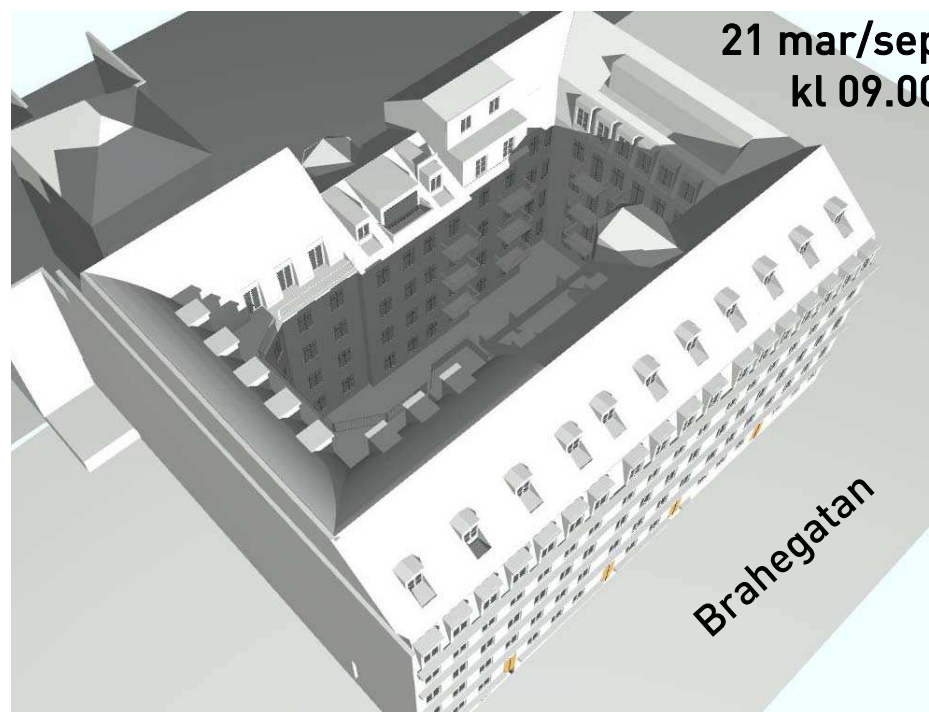
SKISS - KV HUMLEGÅRDEN 49

SOLSTUDIE 2016 08 24

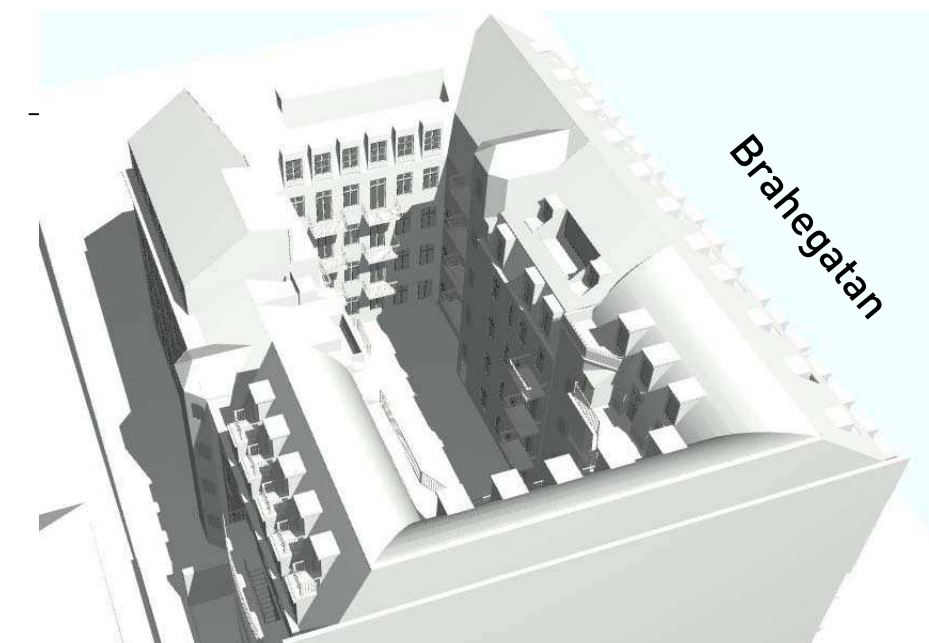
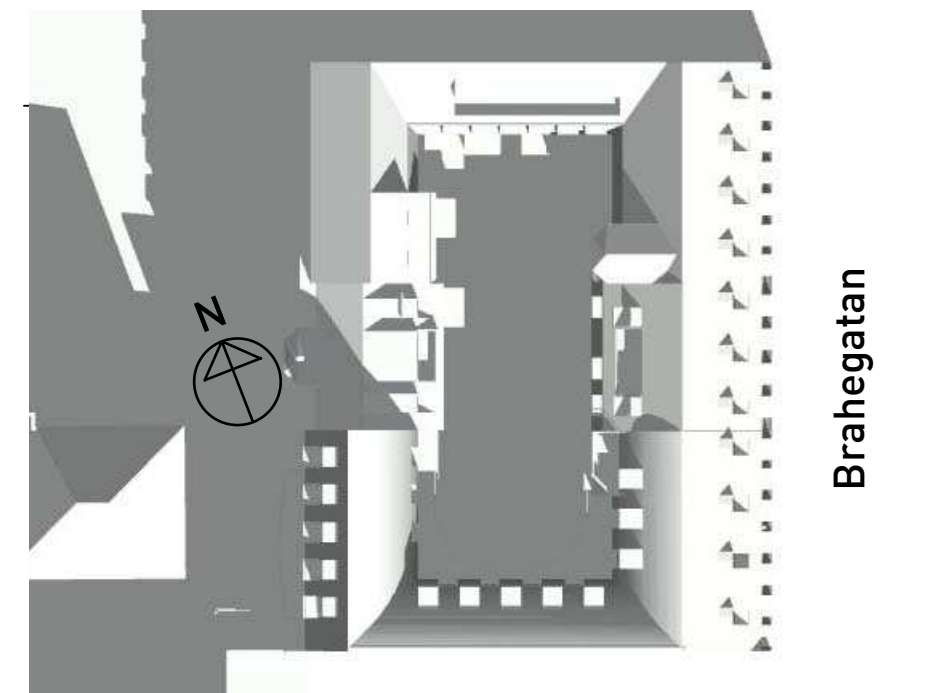
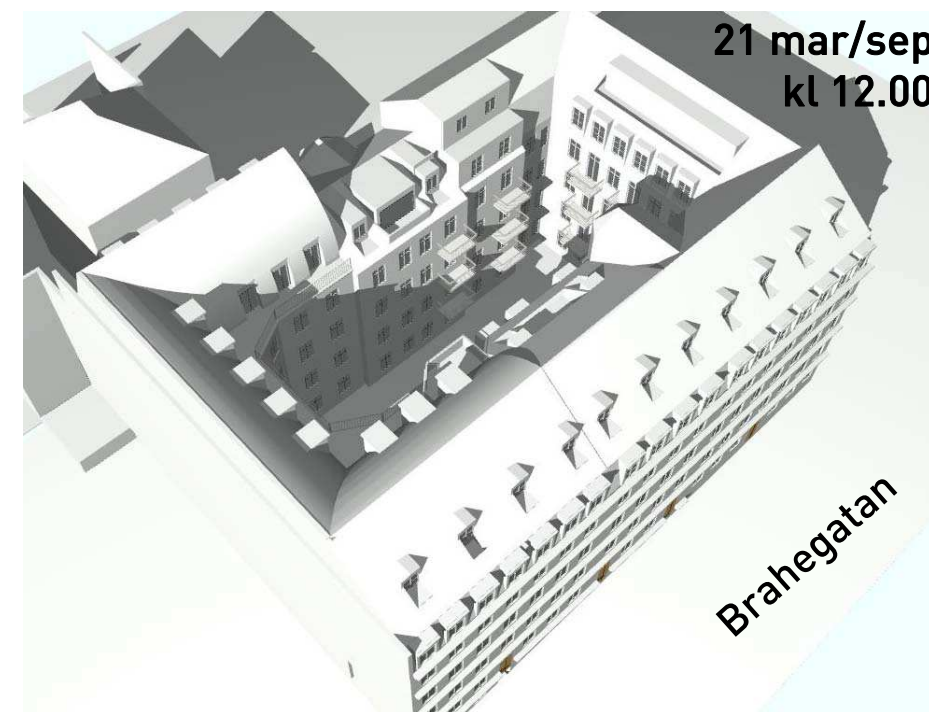
brunnberg&forshed
ARKITEKTKONTOR AB



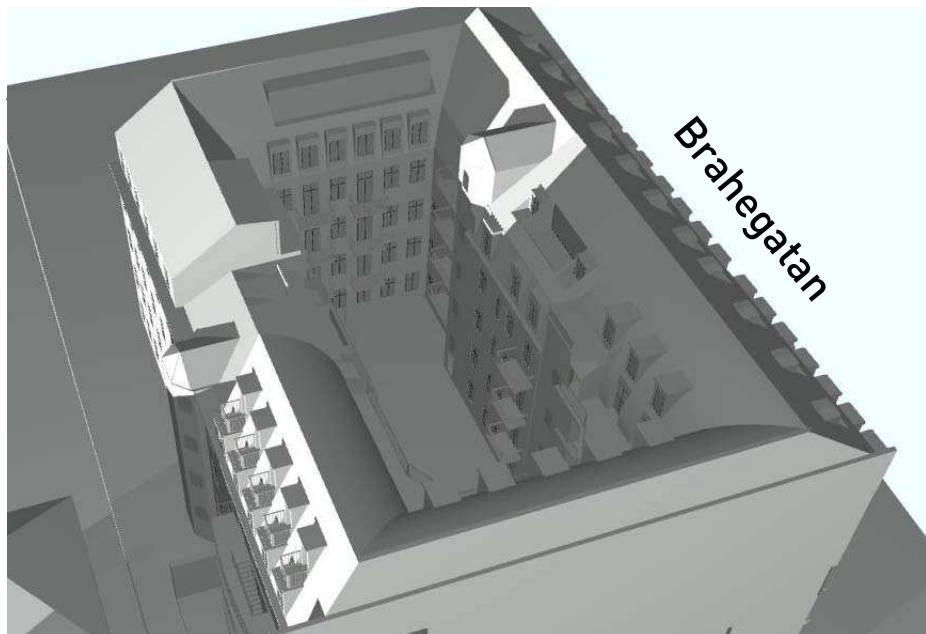
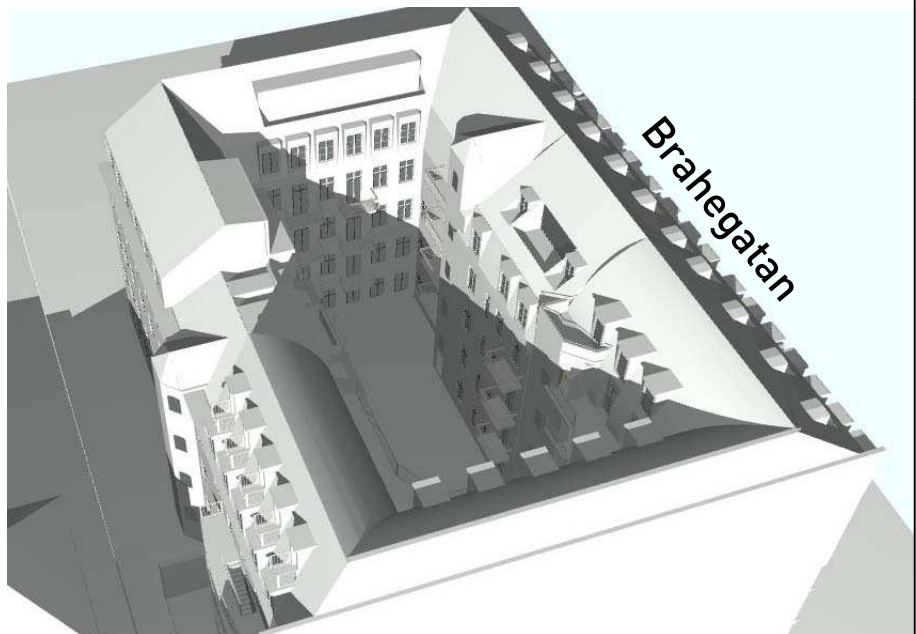
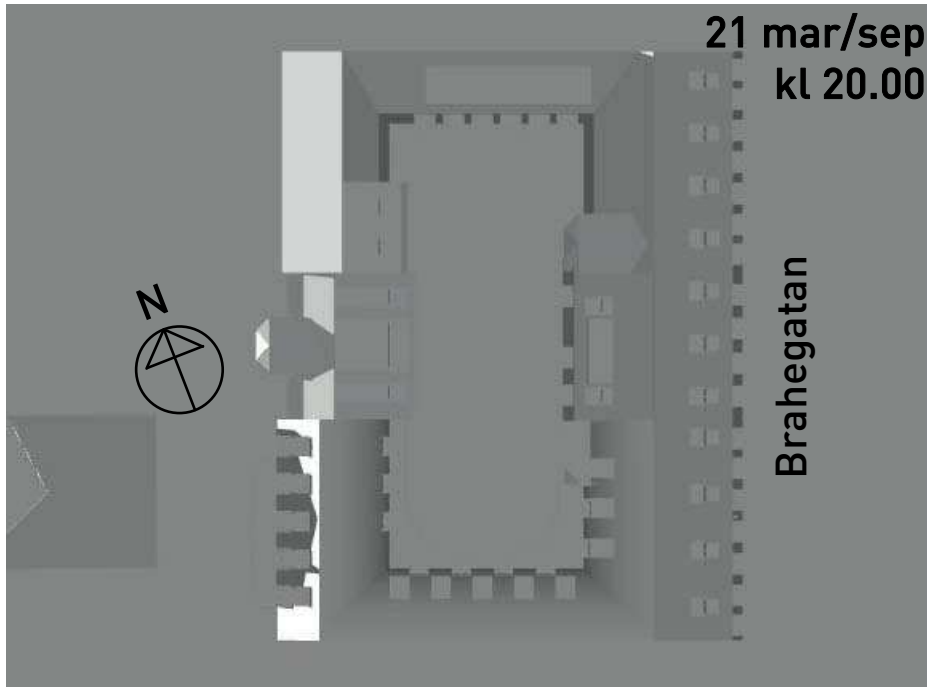
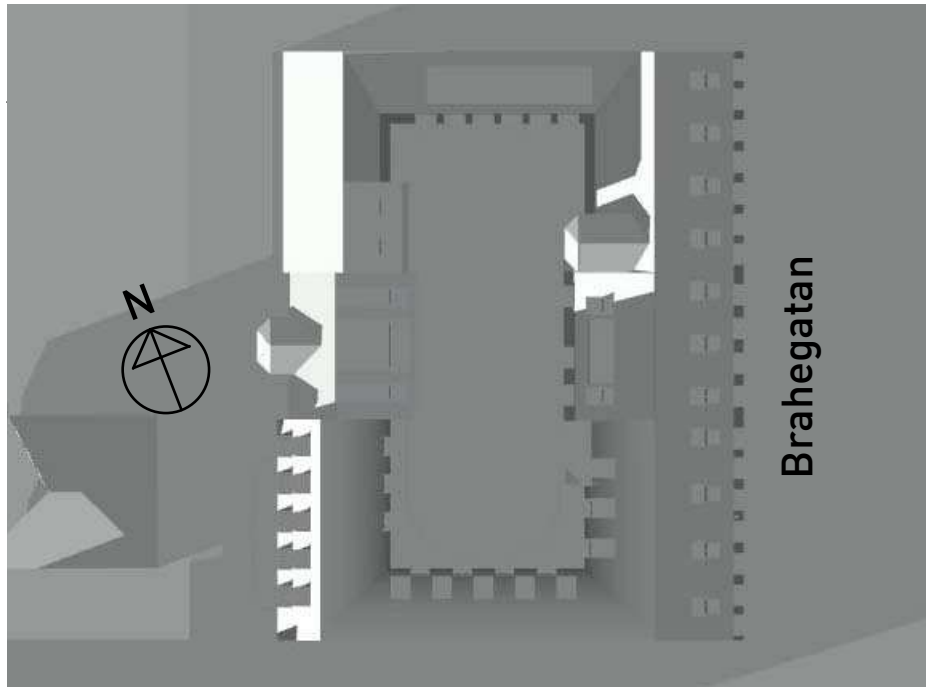
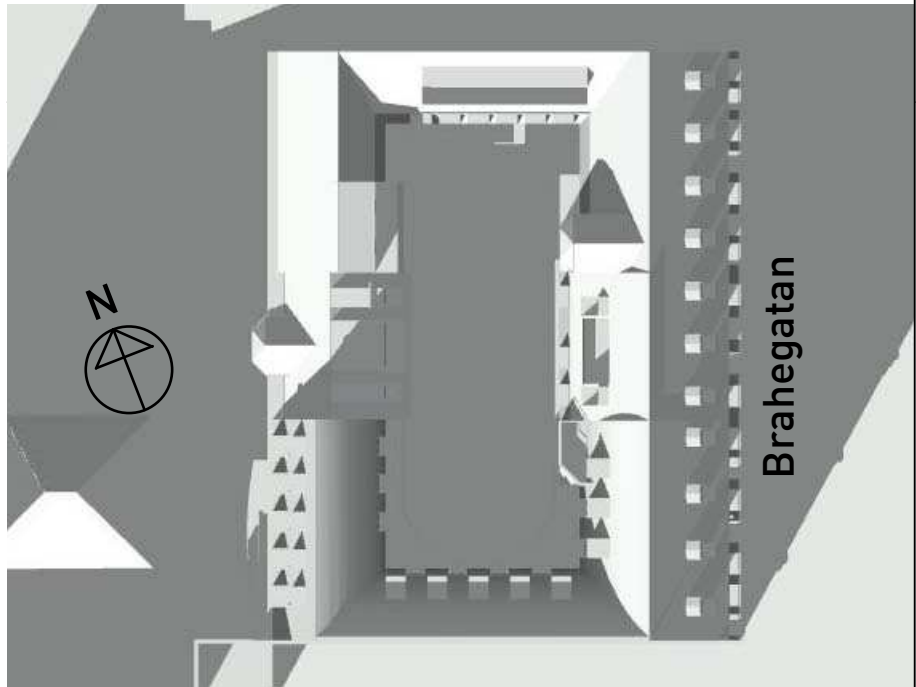
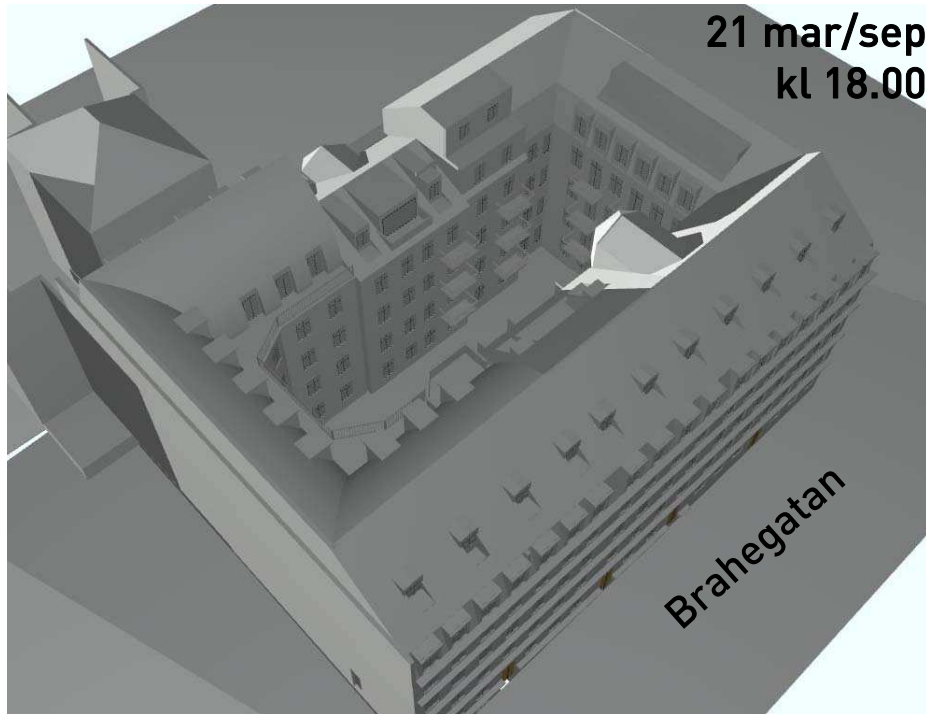
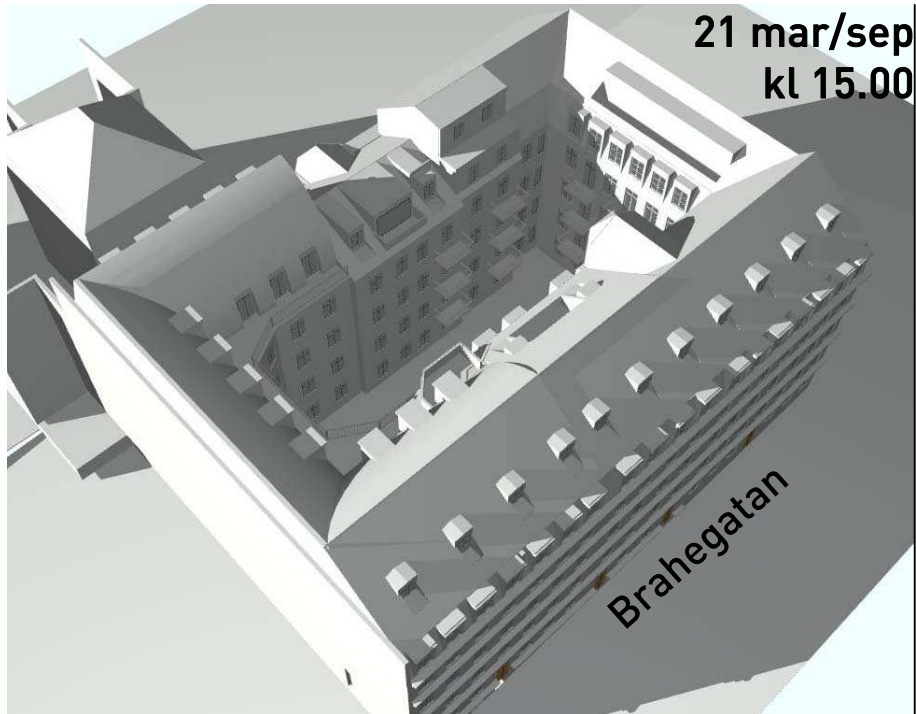
JE ÖSTERLING FÖRVALTNING AB



SKISS - KV HUMLEGÅRDEN 49



SOLSTUDIE 2016 08 24



JE ÖSTERLING FÖRVALTNING AB

SKISS - KV HUMLEGÅRDEN 49

SOLSTUDIE 2016 08 24

Inkom till Stockholms stadsbyggnadskontor - 2016-08-25, Dnr 2016-02540