

STOCKHOLMS STAD Stadsbyggnadskontoret
Inkom 2015-09-17
Reg. Dnr 15-15513-575

STOCKHOLMS STADSBYGGNADSNÄMND
Tillhör nämndens besikt
2016-04-28

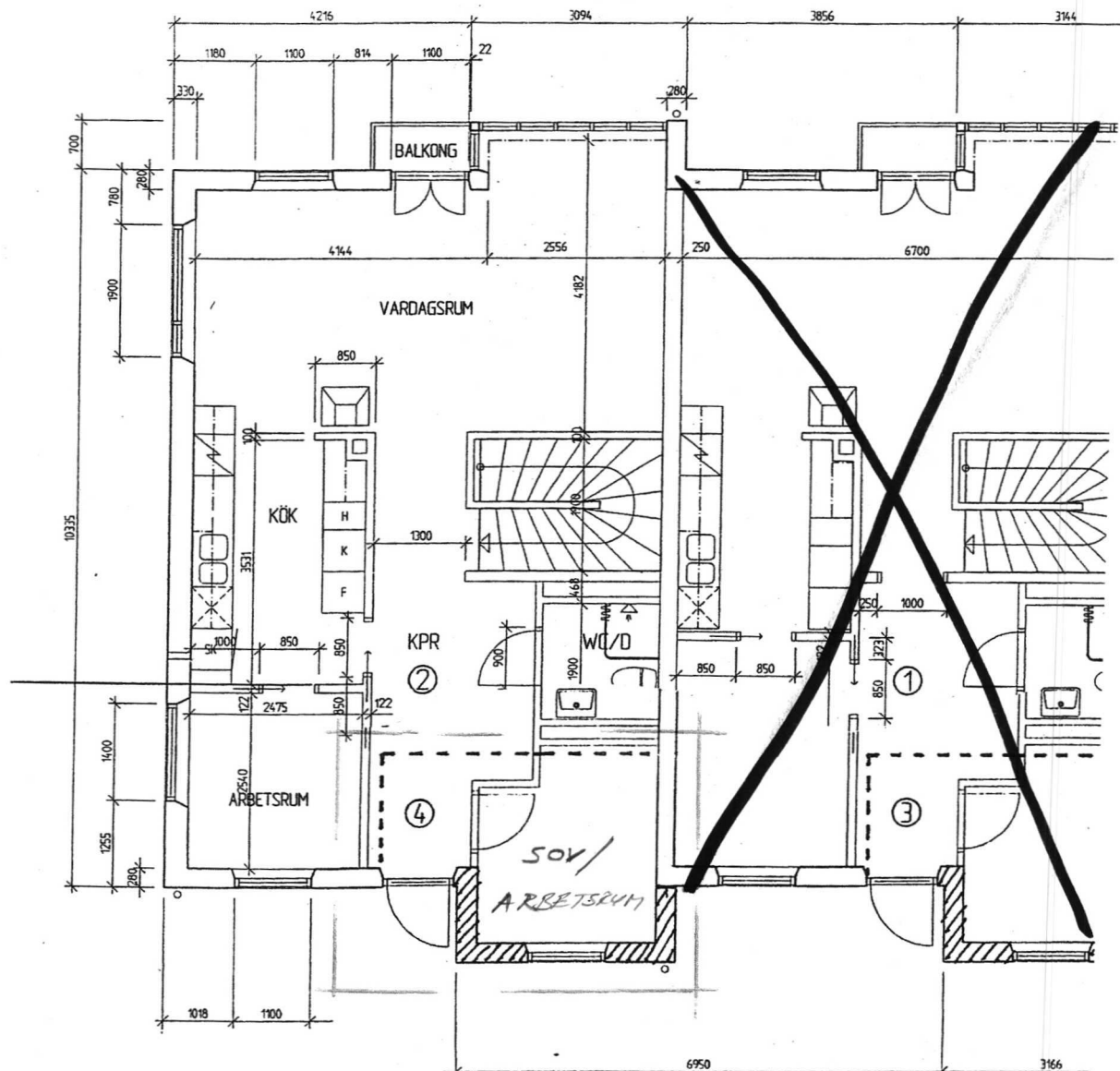
BESLUTETS OMFATTNING
SIGN.

PASTIGHET: KÄLLBERGET 12

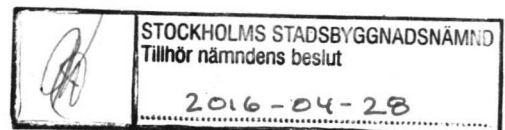
SITUATIONSPLAN

KÄLLBERGET

12

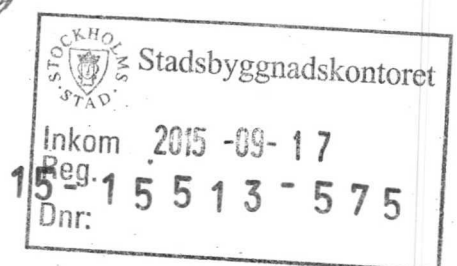
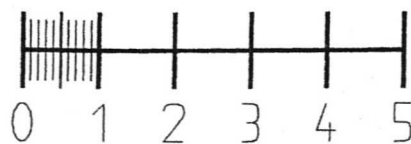


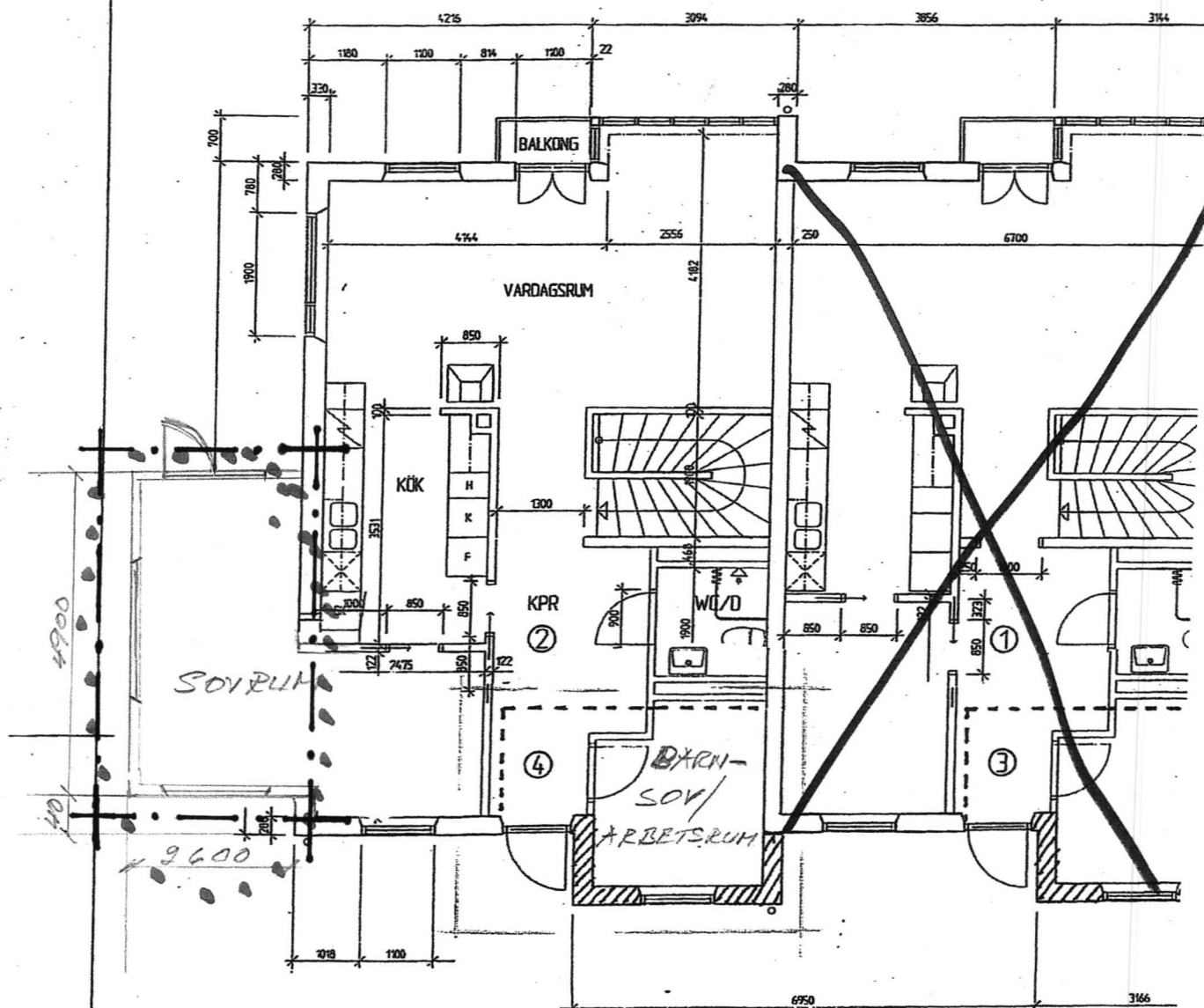
PLAN 2 = ENTREPLAN



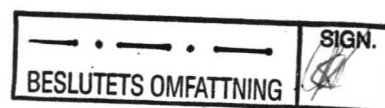
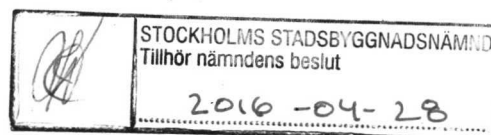
NUVARANDE PLANLÖSNING

METER



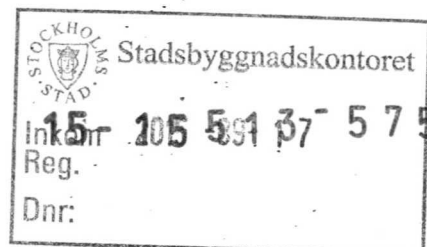
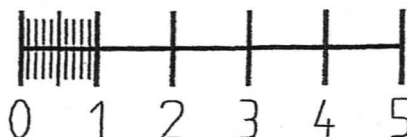


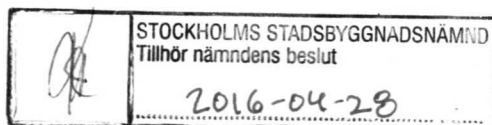
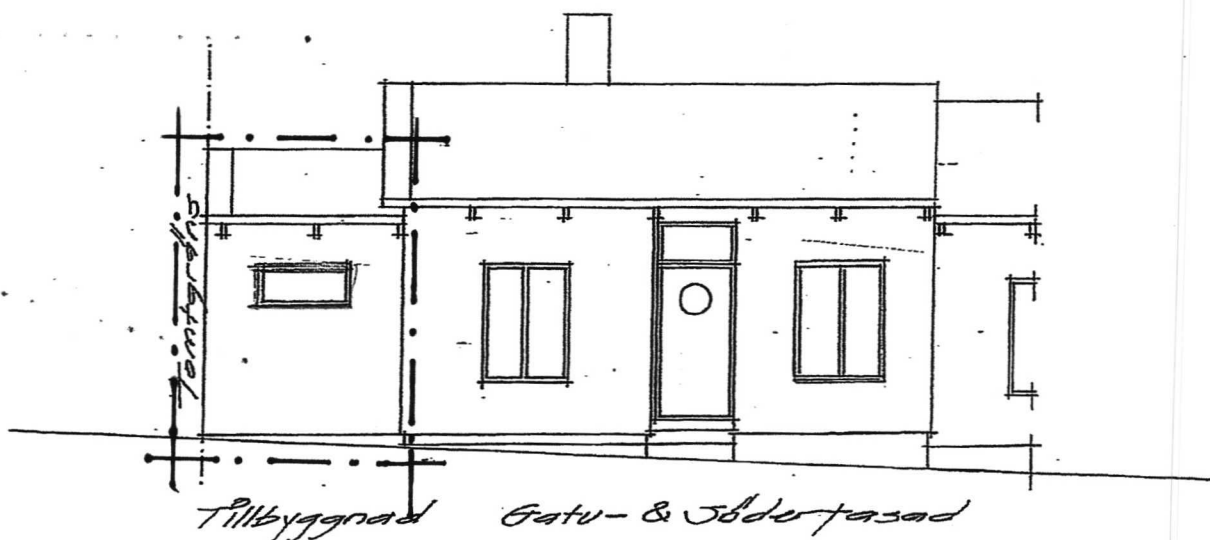
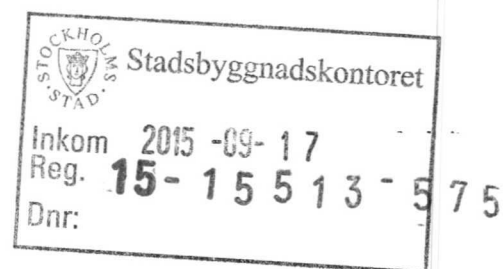
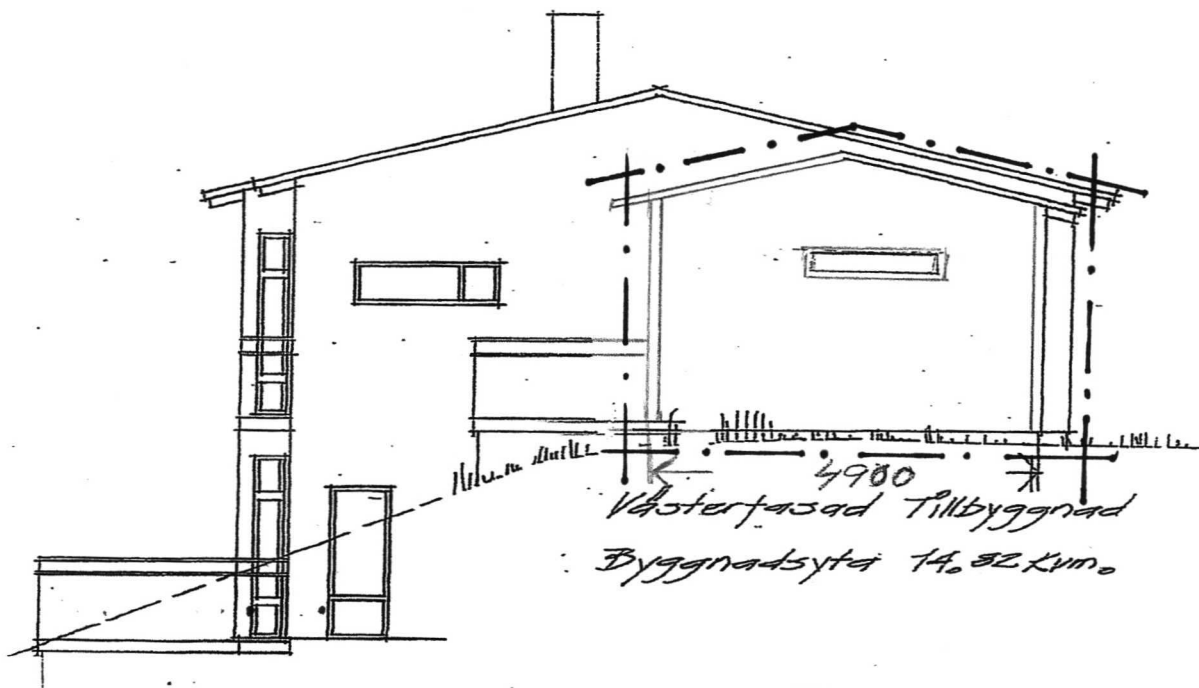
PLAN 2 = ENTRE-PAN



EFTER UTBYGGNAD

METER



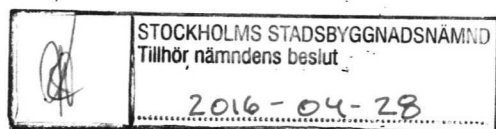
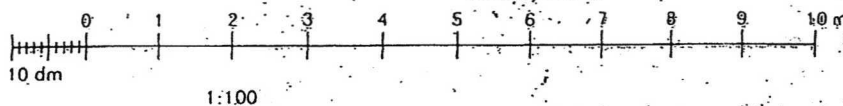
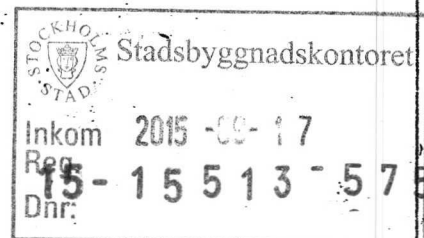


Stockholm Stad
Fastighet: Källiberget 18, Tillbyggnad
Väster- & Söderfasad
Skala: 1:500



FAJAD MOT NÖRDBÄUT

LÖR LIKA BEF.
14° LIKA BEF., SÖDLIGGARE LIKA BEF.



BYGGLOVHANDLING
KV. KÄLLBERGET 18
FASADER

RITN. NRA2 REV: SKALA 1:100
2014-12-29 RITAD AV: PER JUNDBLAD
ARKITEKT