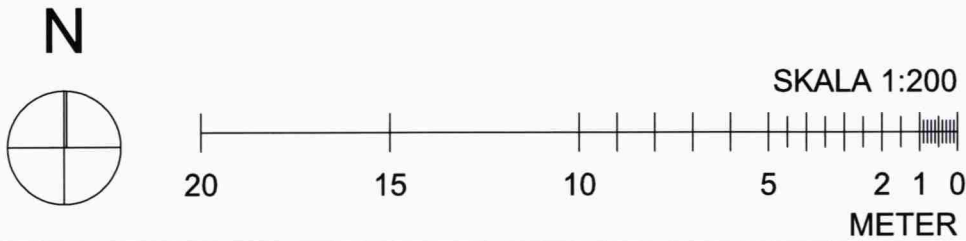
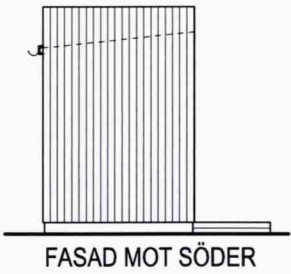
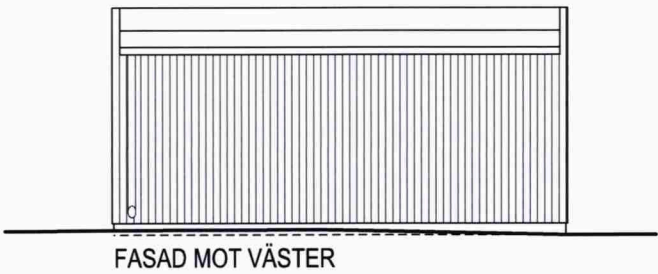
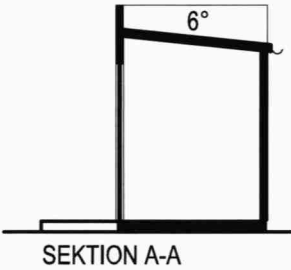
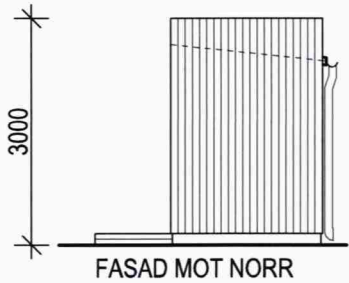
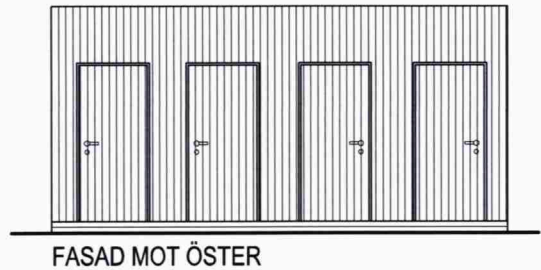
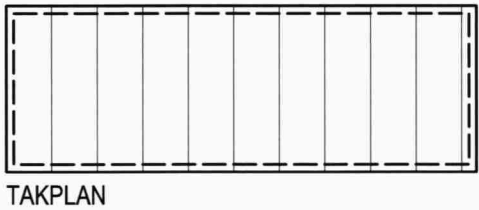
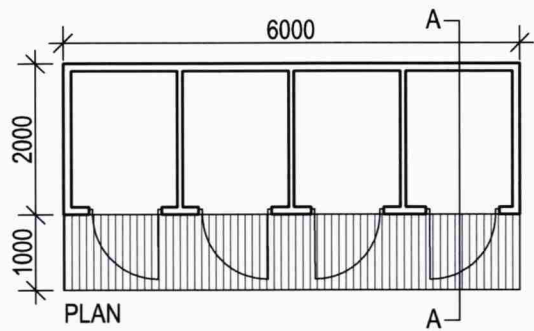



Inkom till Stockholms stadsbyggnadskontor - 2015-11-19, Dnr 2015-19935



FASTIGHETSBETECKNING: TUSSMÖTETORPET 19 ADRESS: TUSSMÖTEVÄGEN 234, 122 64, ENSKEDE	2015-11-19	DATUM	BYGGLOVSHANDLING		
	HARALD GAMRELL	ANSVARIG	FÖRRÅD		
	1:100 (A3)	SKALA			
	BET	NUMMER A-40.4-101	HG	HANDLÄGGARE GR	UPPDRAG NR 11518800



STOCKHOLM
STAD

Stadsbyggnadskontoret

Inkom 2015 -11- 19
Reg.
Dnr: 15 - 19935 - 575

**lilje
wall**