

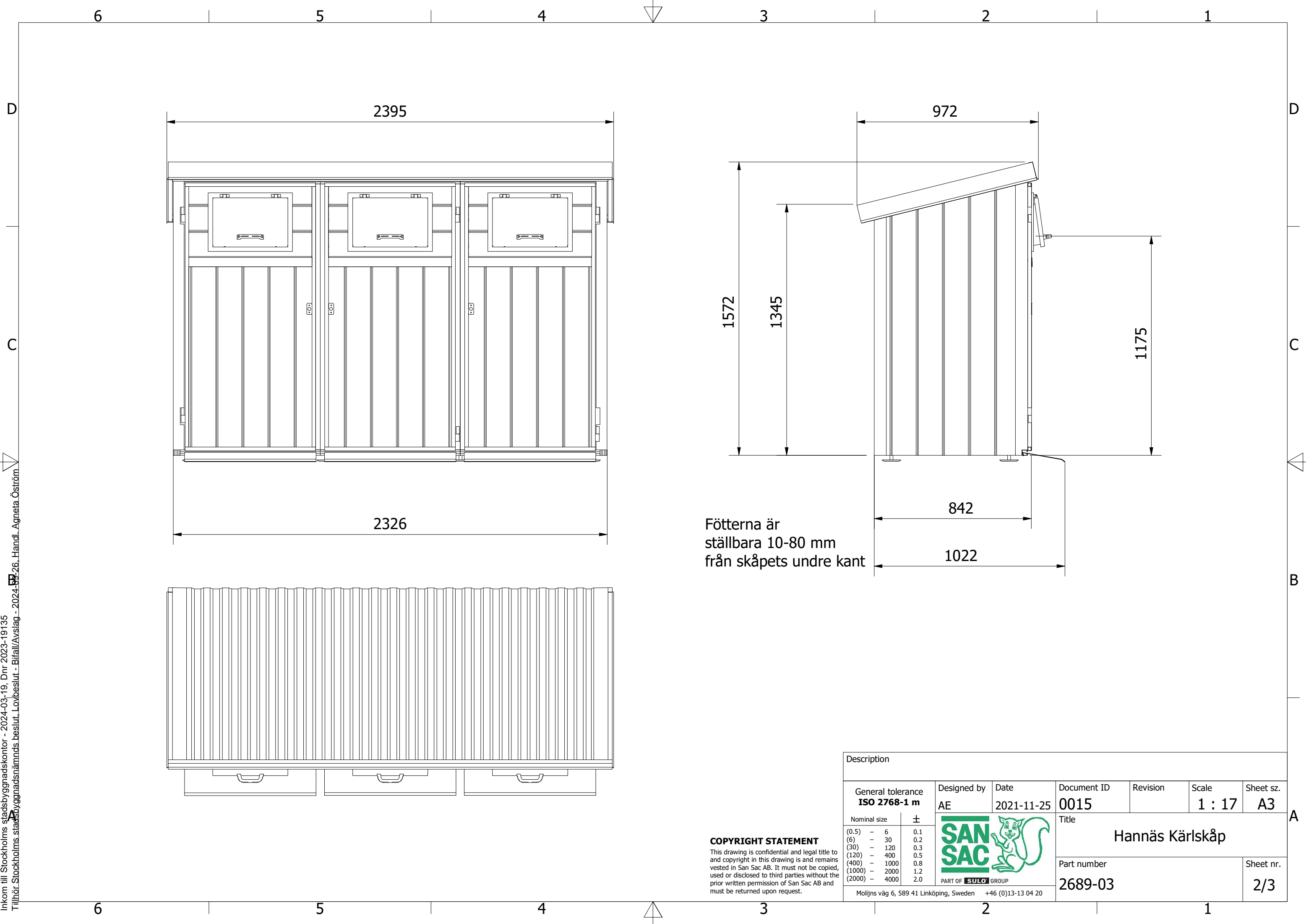
6 5 4 3 2 1

D

C

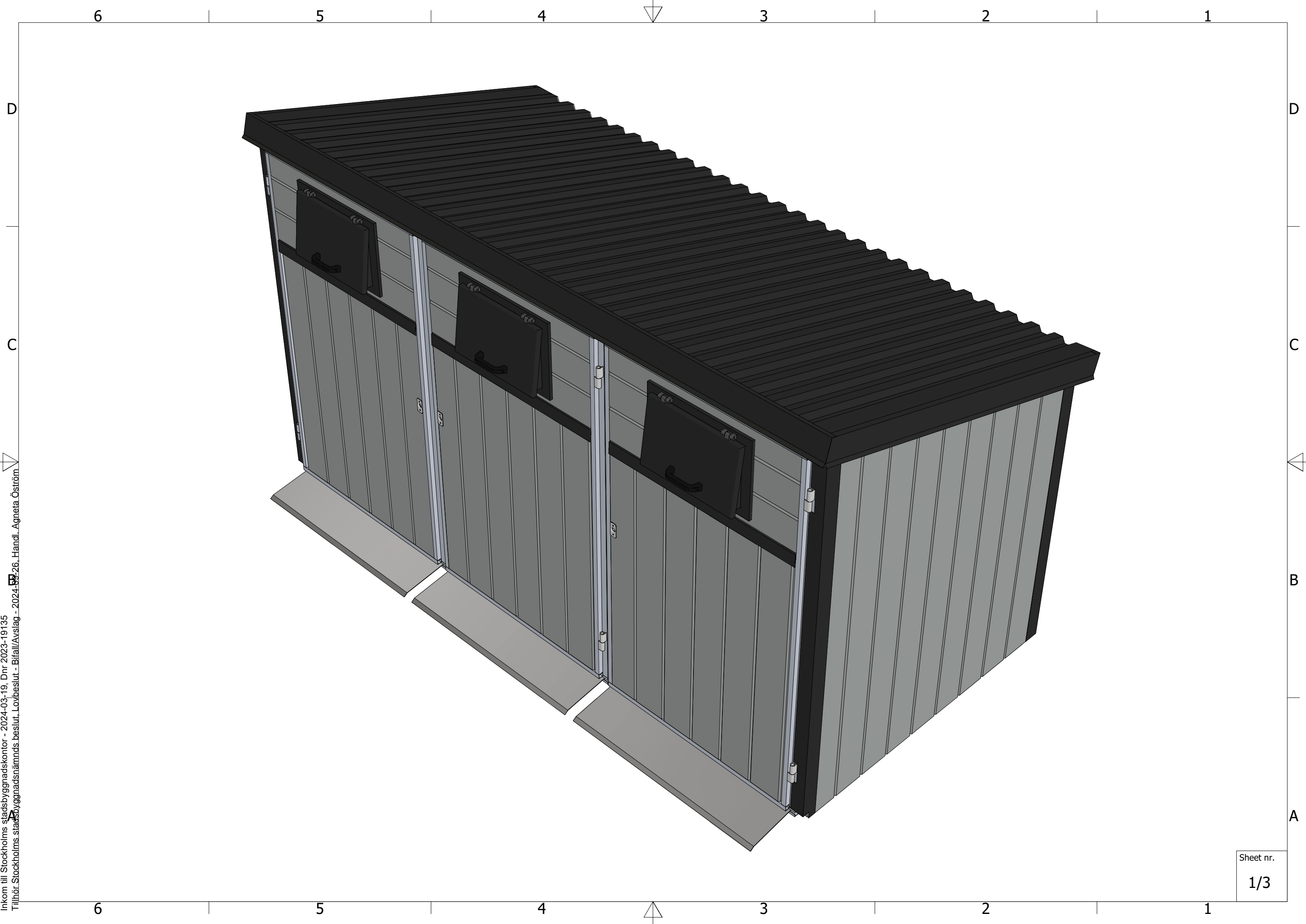
B

A



**COPYRIGHT STATEMENT**

This drawing is confidential and legal title to and copyright in this drawing is and remains vested in San Sac AB. It must not be copied, used or disclosed to third parties without the prior written permission of San Sac AB and must be returned upon request.



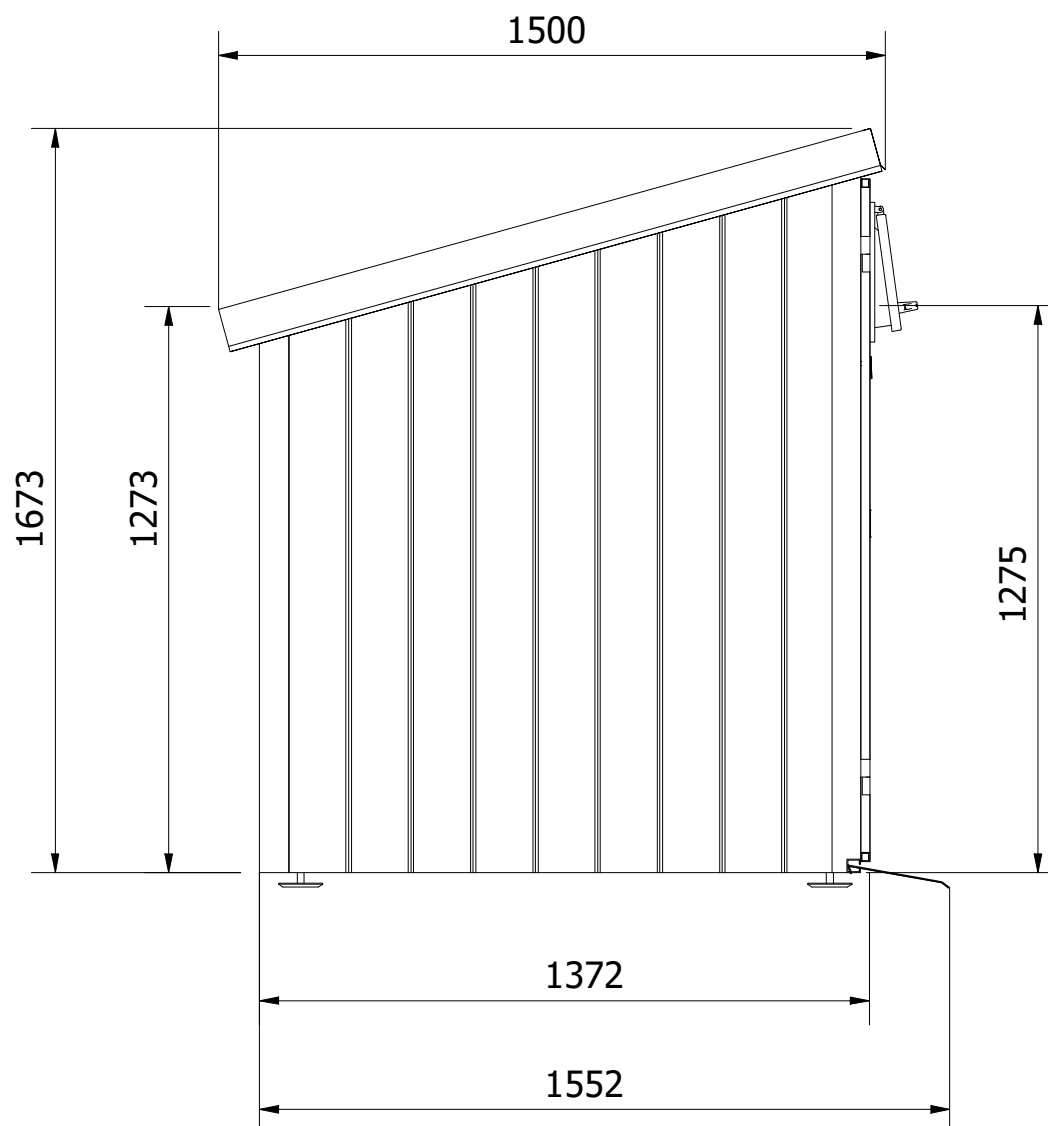
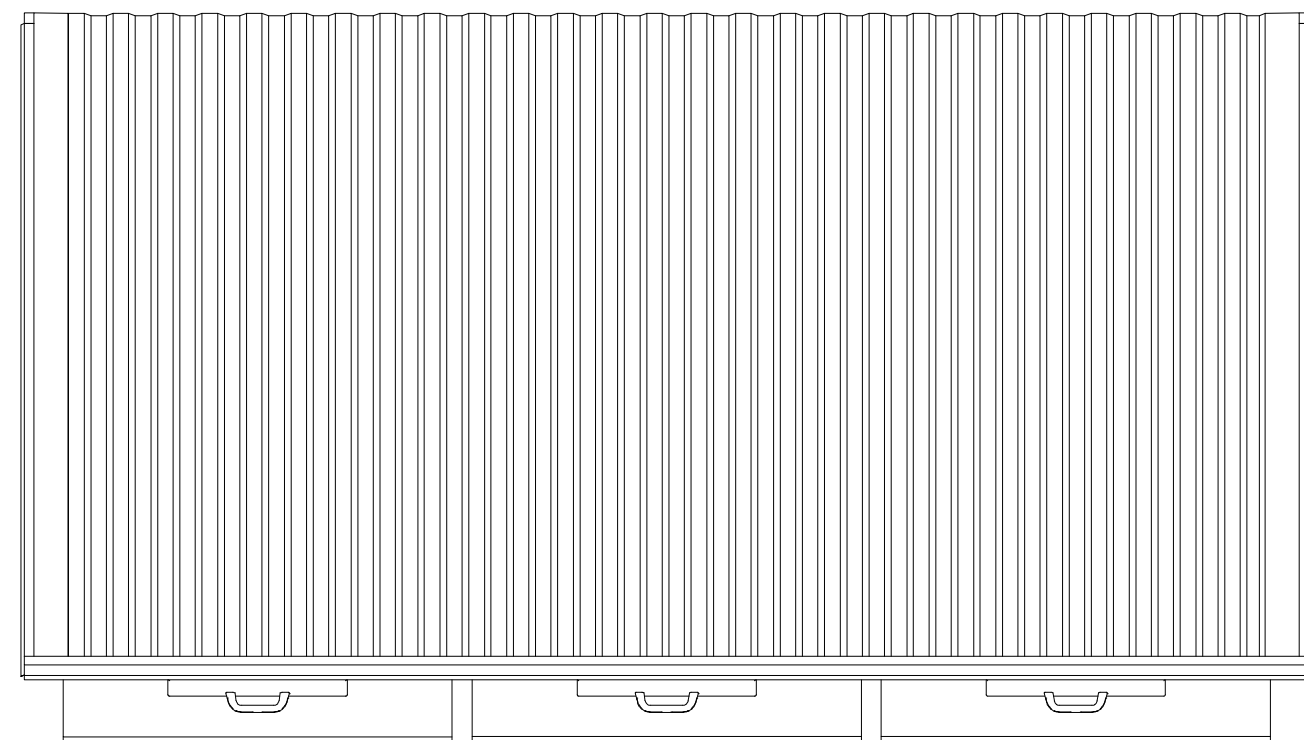
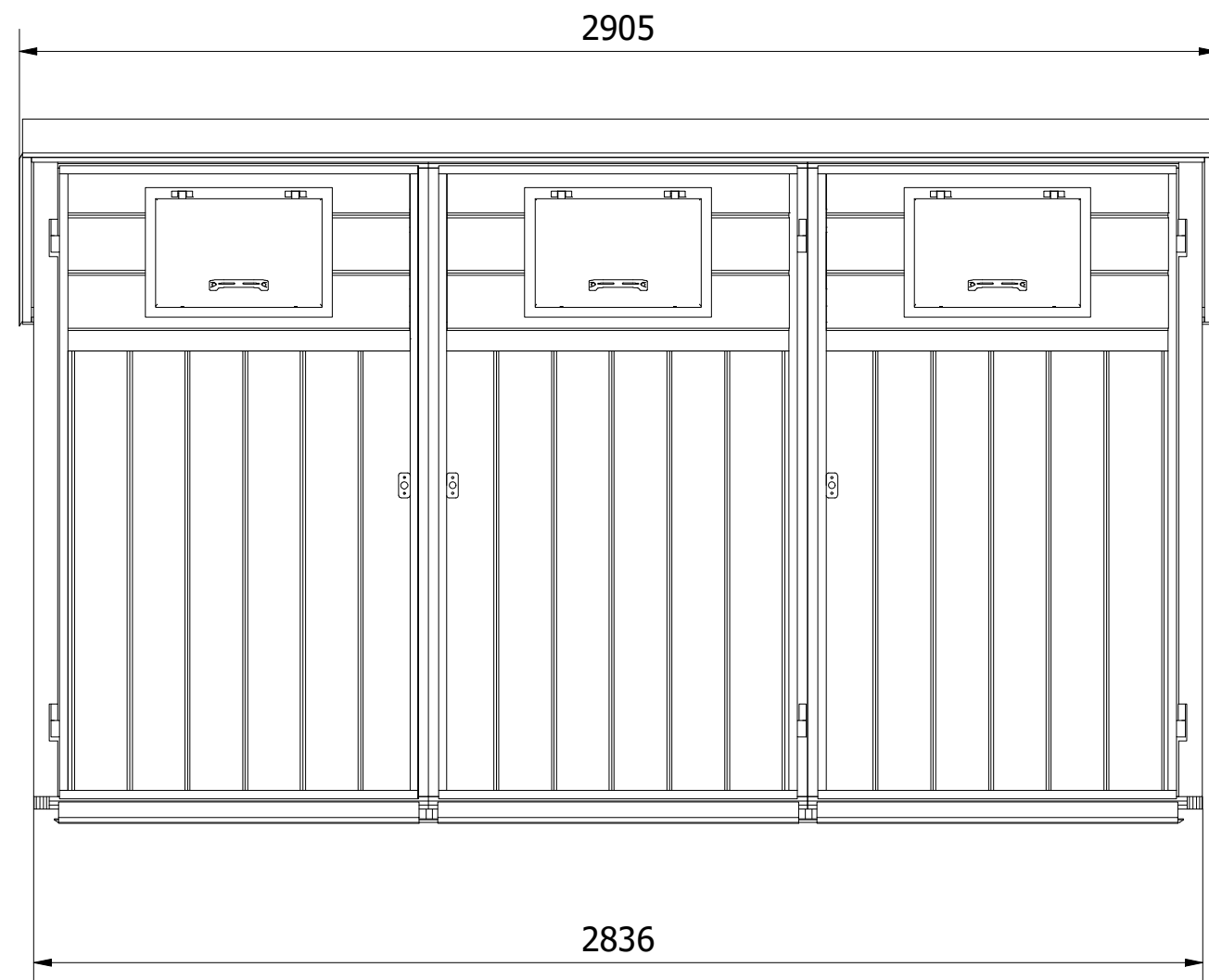
6 5 4 3 2 1

D

C


B

A



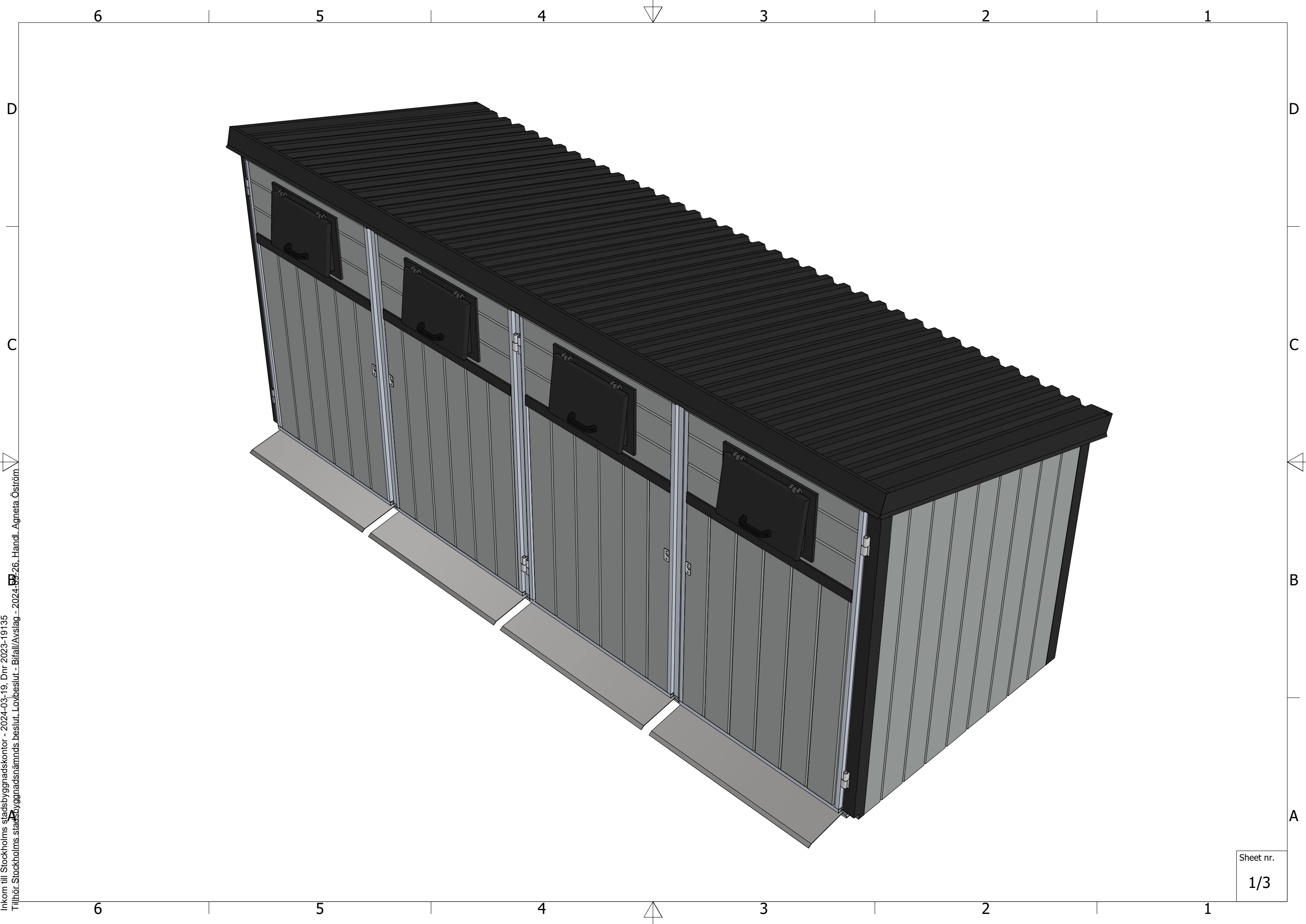
Fötterna är  
ställbara 10-80 mm  
från skåpets undre kant

to  
ins  
ed,  
the  
d

Description								
General tolerance <b>ISO 2768-1 m</b>		Designed by <b>AE</b>	Date <b>2021-11-25</b>	Document ID <b>0022</b>	Revision	Scale <b>1 : 17</b>	Sheet sz. <b>A3</b>	
Nominal size	±	 PART OF <b>SULO</b> GROUP						
(0.5)	– 6							0.1
(6)	– 30							0.2
(30)	– 120							0.3
(120)	– 400							0.5
(400)	– 1000							0.8
(1000)	– 2000							1.2
(2000)	– 4000	2.0	Title  <b>Hannäs Kärlskåp</b>					
Moljins väg 6, 589 41 Linköping, Sweden +46 (0)13-13 04 20			Part number  <b>2691-03</b>			Sheet nr.  <b>2/3</b>		

## COPYRIGHT STATEMENT

This drawing is confidential and legal title to and copyright in this drawing is and remains vested in San Sac AB. It must not be copied, used or disclosed to third parties without the prior written permission of San Sac AB and must be returned upon request.



6 5 4 3 2 1

D

C

B

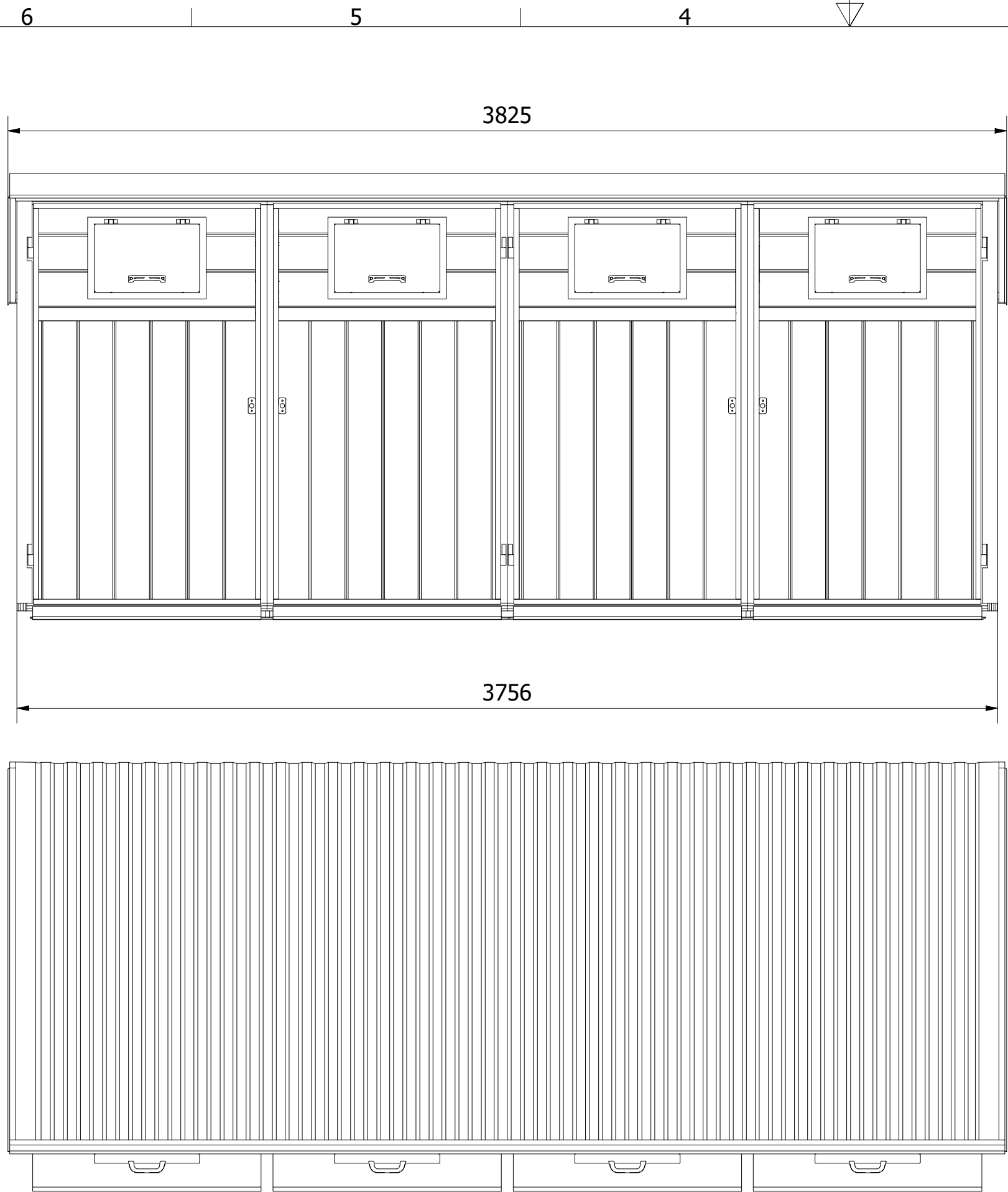
A



Inkom till Stockholms stadsbyggnadskontor - 2024-03-19, Dnr 2023-19135  
Tillhör Stockholms stadsbyggnadsnämnds beslut, Lovbeslut - Bifall/Avslag - 2024-03-26, Handl. Agneta Öström

D


C

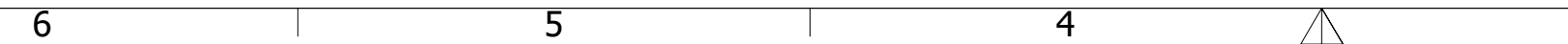


**COPYRIGHT STATEMENT**

This drawing is confidential and legal title to and copyright in this drawing is and remains vested in San Sac AB. It must not be copied, used or disclosed to third parties without the prior written permission of San Sac AB and must be returned upon request.

Fötterna är  
ställbara 10-80 mm  
från skåpets undre kant

Description						
General tolerance <b>ISO 2768-1 m</b>	Designed by AE	Date 2021-11-25	Document ID <b>0023</b>	Revision	Scale <b>1:18</b>	Sheet sz. <b>A3</b>
Nominal size	±	 <b>Hannäs Kärlskåp</b>				
(0.5) - 6	0.1					
(6) - 30	0.2	Part number <b>2691-04</b>				
(30) - 120	0.3					
(120) - 400	0.5	Sheet nr. <b>2/3</b>				
(400) - 1000	0.8					
(1000) - 2000	1.2	Molijns väg 6, 589 41 Linköping, Sweden +46 (0)13-13 04 20				
(2000) - 4000	2.0					



6

5

4



3

2

1

D

C



B

A