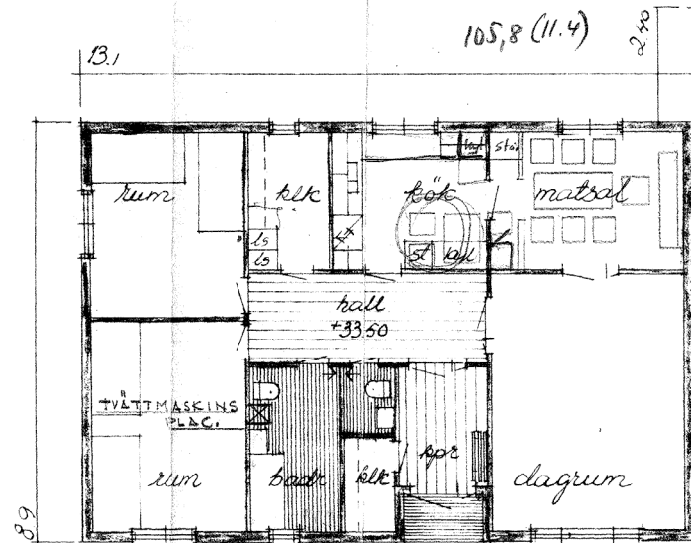
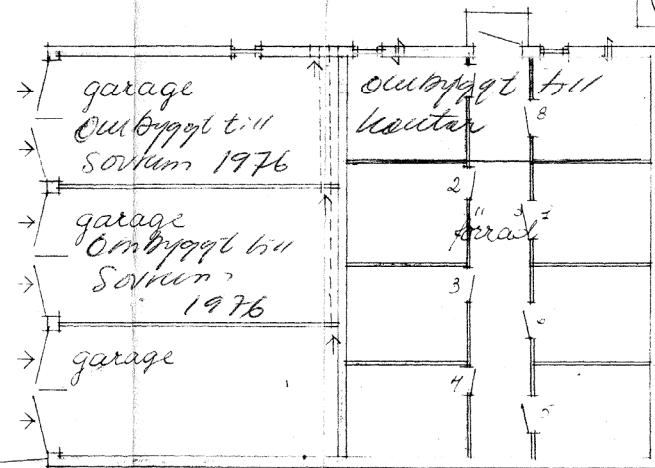


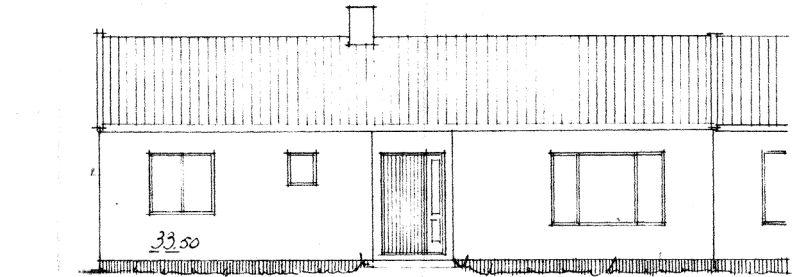
Ark 15/6-59.



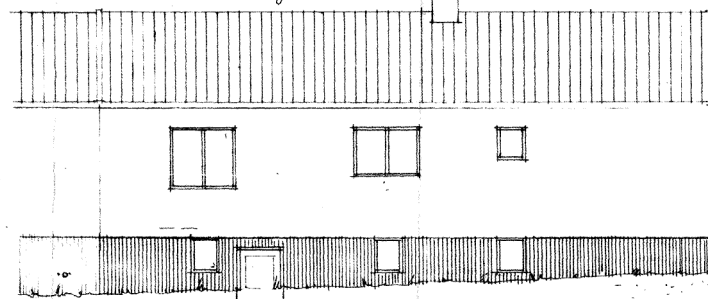
Plan av bottenplan och källare  
till radhus Lätt C 1.



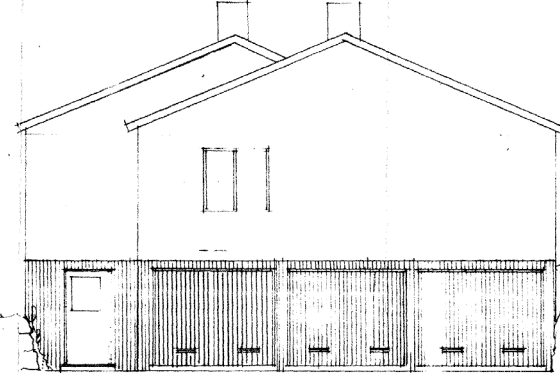
0 1 2 3 4 5  
Skala 1:100



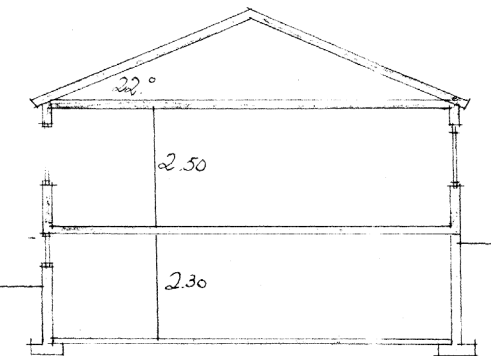
Fasad mot sydväst



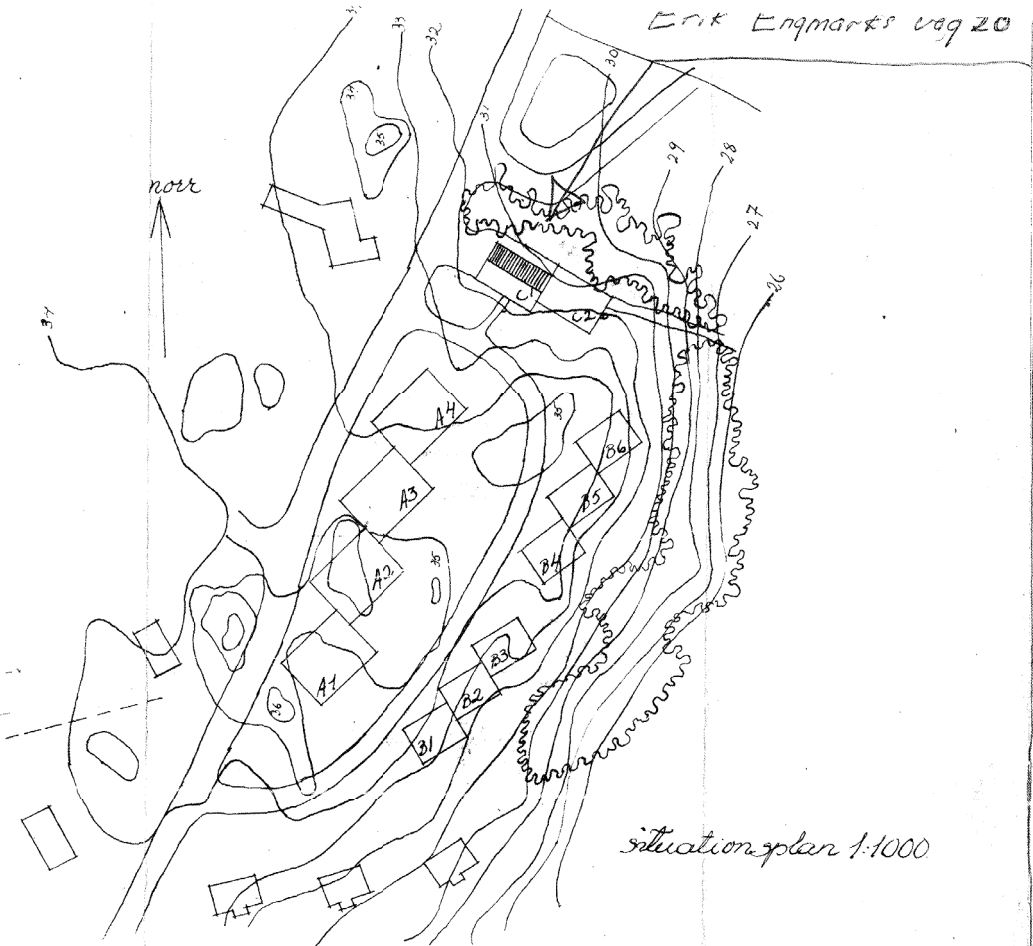
Fasad mot nordöst



Gavlur mot nordväst



Sektion



situationplan 1:1000

Stora Sköndal.  
Personalbostäder.  
Familjebostad Lätt C 1.  
Stockholm 25.3.1959  
Tor. Boije.  
ark SAR/mb

1398k