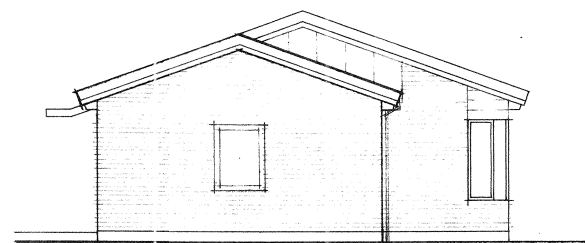
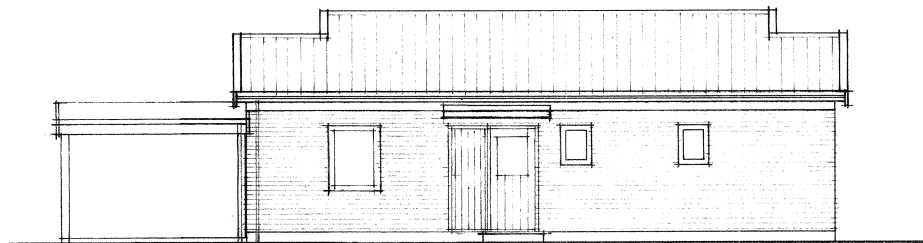
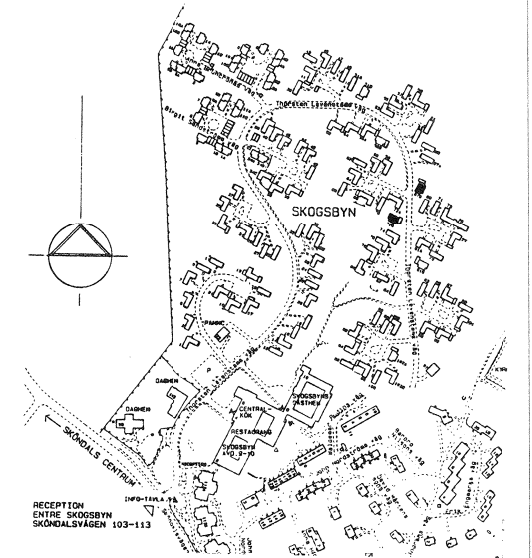
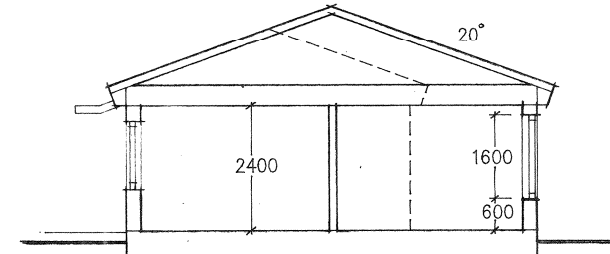
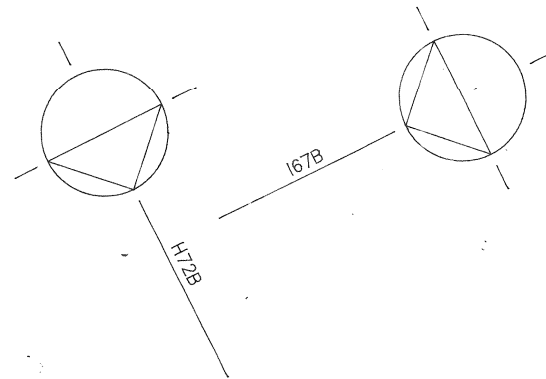
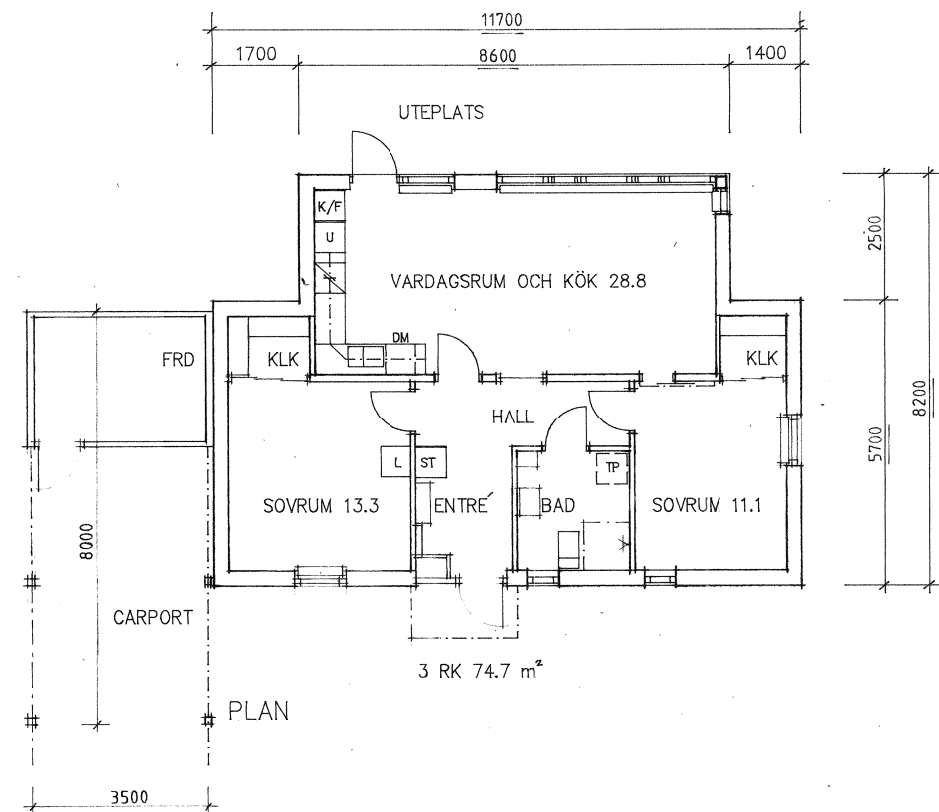
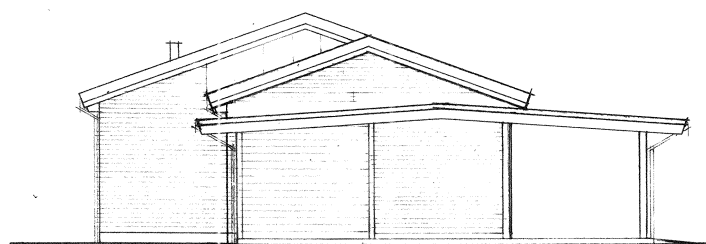
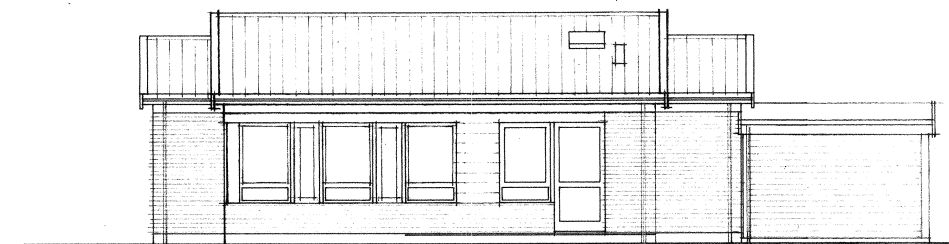


Inkom till Stockholms stadsbyggnadskontor - 2024-05-17, Dnr 2024-07331



KALKSANDSTENSFASAD



## RELATIONSRTNING

**PEAB**  
HANS LUND ARKITEKTKONTOR

SOLLENTUNAVÄGEN 15 • 191 29 SOLLENTUNA • 08-623 68 00  
TJILLGATAN 8 • 631 01 ESKILSTUNA • 016-14 72 70  
REGELGATAN 5 • 582 54 LINKÖPING • 013-16 23 30  
ÅNGSGÅRDGATAN 12 • 721 30 VÄSTERÅS • 021-10 31 00

RITAD AV DATUM GRANSKAD AV  
94-02-09 *Hans Lund*

| C                           | RELATION          | 941024             |       |       |
|-----------------------------|-------------------|--------------------|-------|-------|
| E                           | RELATION          | 940920             |       |       |
| A                           | MÄTT - FASAD - MM | 940411             |       |       |
| REV.                        | ANT.              | REVIDERINGEN AVSER | SIGN. | DATUM |
| SKÖNDAL 1:1 · SKÖNDAL       |                   |                    |       |       |
| SKOGSBYN - ÄLDREBOSTÄDER    |                   |                    |       |       |
| THORSTEN LEVENSTAMS VÄG 104 |                   |                    |       |       |
| SKALA 1:100                 |                   |                    |       |       |
| ARBETNSNUMMER               |                   | RITINGSNUMMER      |       | REV.  |
|                             |                   | A104               |       | C     |