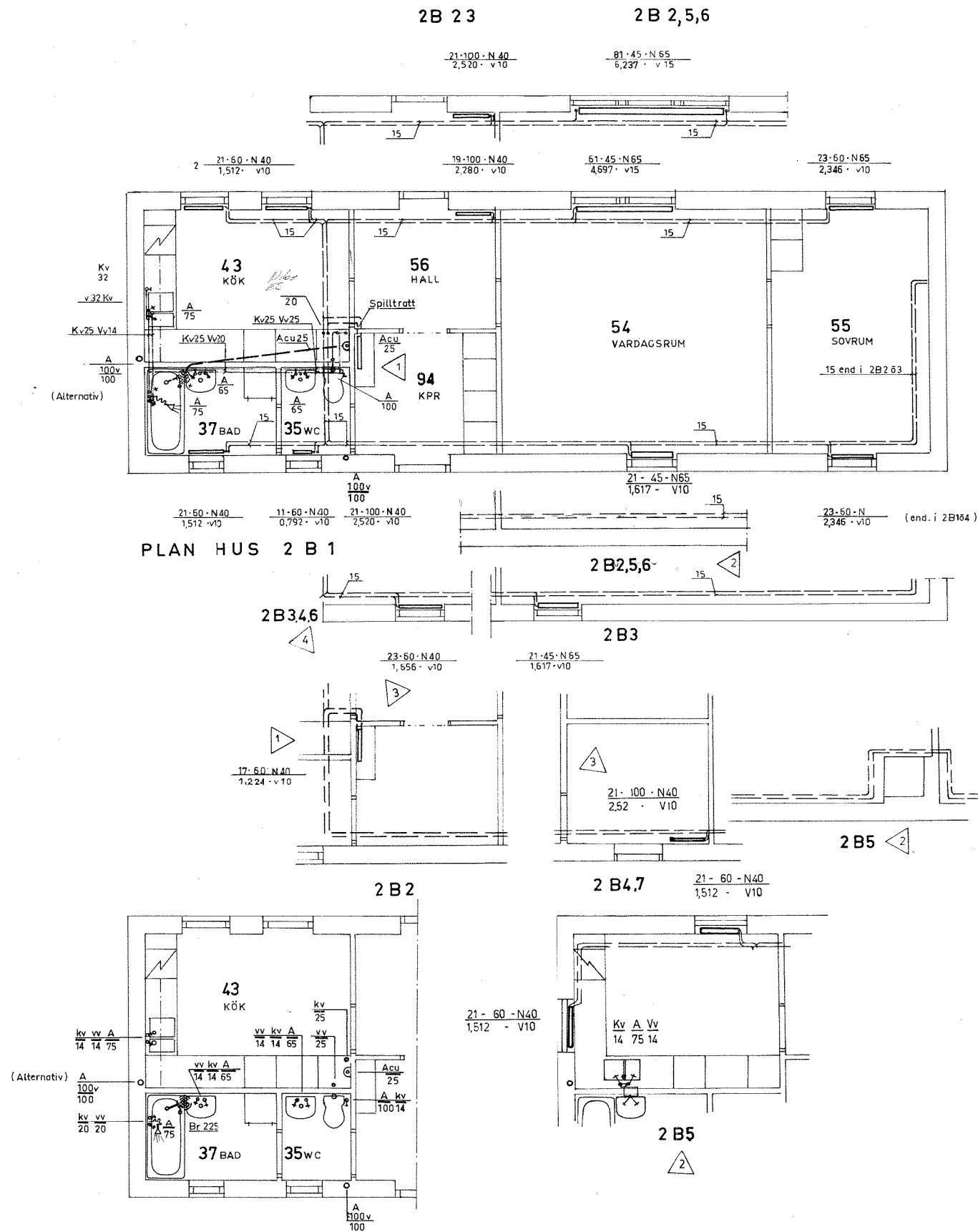
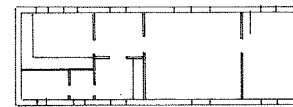


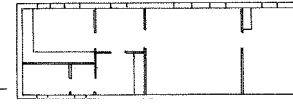
Inkom till Stockholms stadsbyggnadskontor - 2024-05-07, Dnr 2024-07331



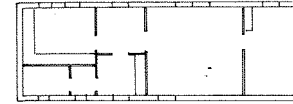
Sanitetsinstallation i hus med källare
HUS A4,B2,B3,G8,I2



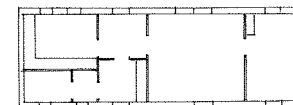
2 B1 HUS A3, A4



2 B2 HUS B2, B3
I2
K2, L2



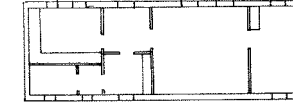
2 B3 HUS H7, L8



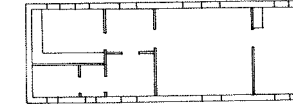
2 B4 HUS
E3
G5
H5, I1



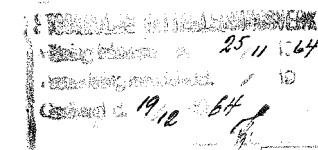
2 B5 HUS G8



2 B6 HUS E1,E7



2 B7 HUS I6



PLANRITNING
THORSTEN LEVENSTAMS VÄG 22

31-166	4	1	Text	Rz
31-5 65	3	4	Hus 16, 2 B4, 2 B7	Rz
18-1 65	2	8	Flyttad diskb.Husbet.Rod.kök.43.rum.54	
4 8 64	1		Rad. i kpr 94	RZ
DAT.	REV.	ANT.	REVIDERINGEN AVSER	INOM.
LA				LO
SKOGBYNN				
STORA SKÖNDAL				
Villor typ 2 B				
150	1:200			
15.5.64				
173				
SVEN LOMÆUS				
KONSULTERANDE INGENJÖRSBYRÅ VVS				
ROSLAGSG. 9 STHLM VA. 30 42 07, 30 43 07				

227