

NOTES AND LEGEND

ALL DIMENSIONS GIVEN IN MM.
ALL DIMENSIONS TO BE VERIFIED IN FIELD PRIOR
TO CONSTRUCTION.
ALL DEVIATIONS MADE FROM THIS DRAWING
SHOULD BE DISCUSSED WITH THE PROJECT
RESPONSIBLE.

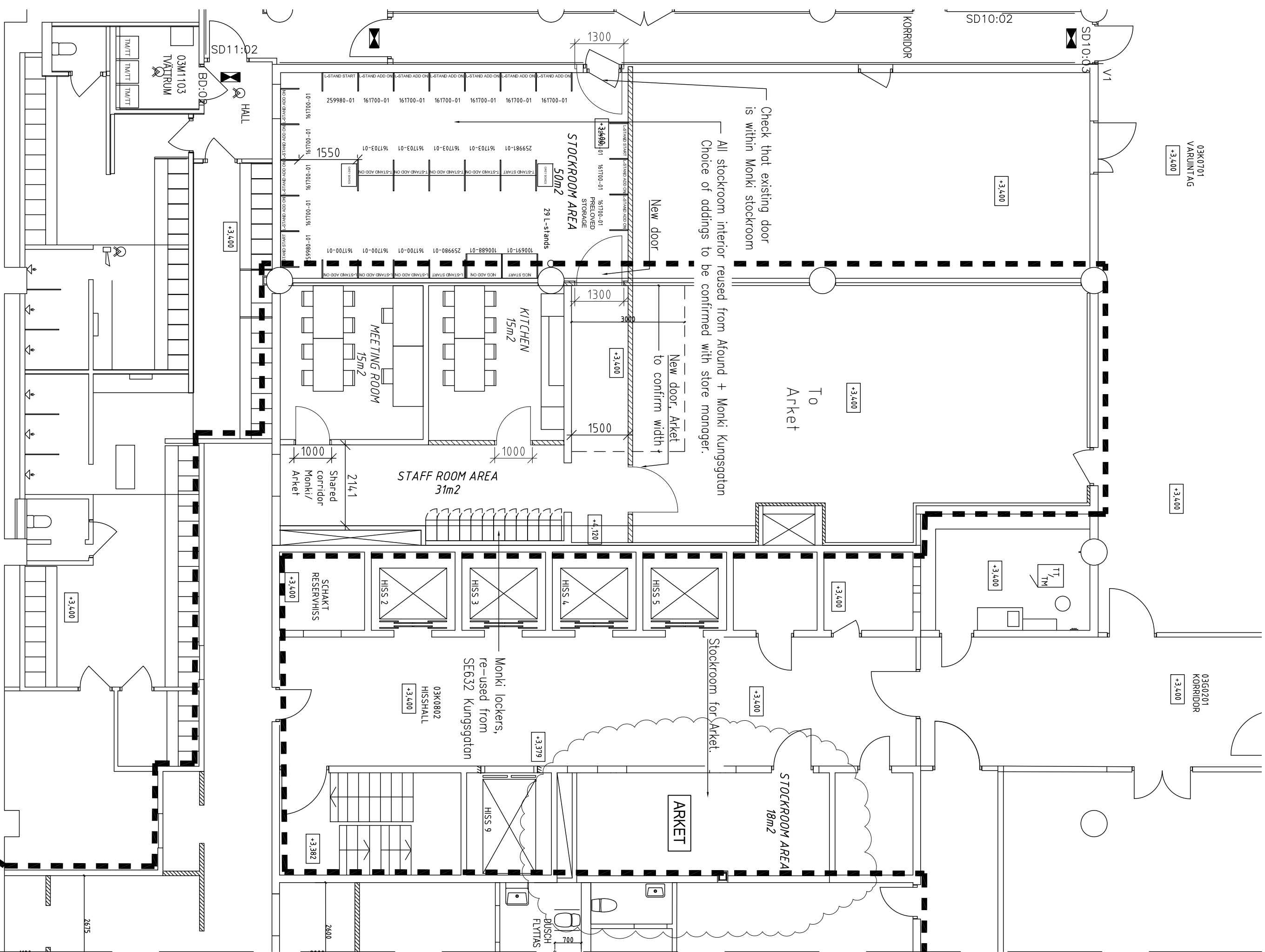
NOTE! CHECK PROJECT - OR INTERIOR CATALOG
AS PRODUCT NUMBERS ON DRAWING MIGHT
DIFFER ON ORDER.

POWER KEY

Furniture requiring power & IT: Cash desk. Power to be supplied from ceiling through powder coated tubes provided by Monki, refer to SD-689-0. Cash desk hardware to be installed on Spacepoles hardware, refer to SD-689-0 for reference specification.

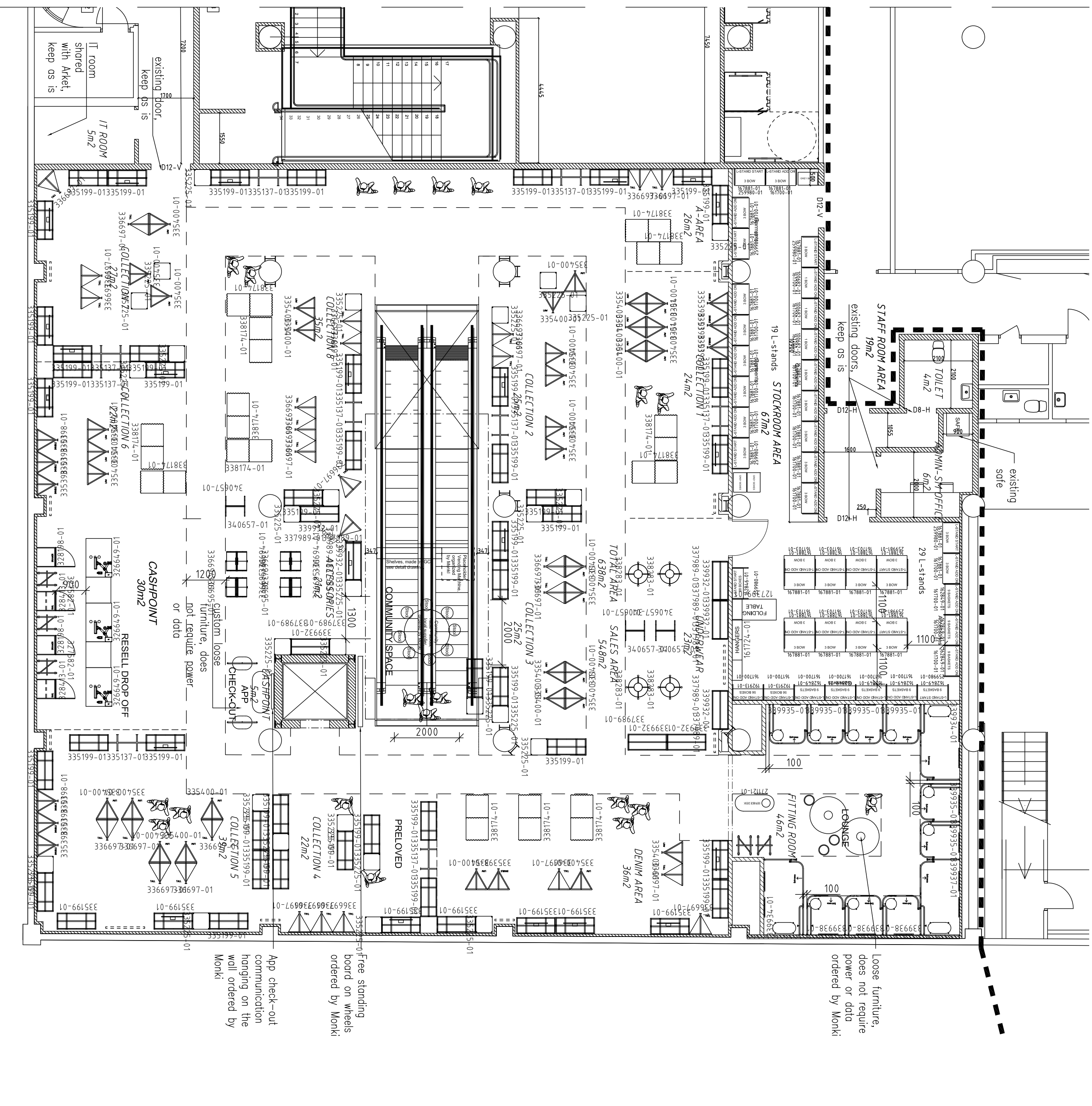
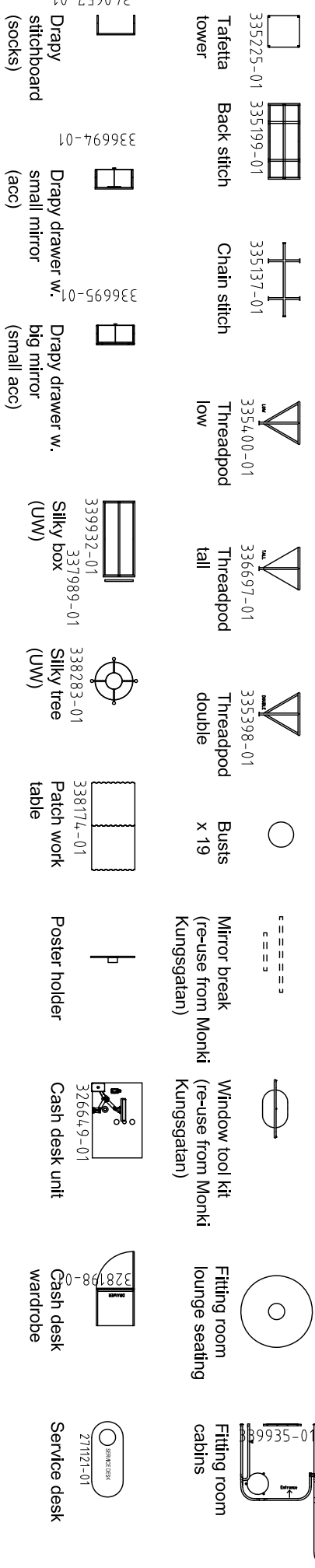
Cash desk wardrobe, require no power

Furniture requiring power: Filting room cabin wall lights. Drivers for LED tube lights to be positioned above ceiling tiles. Cables run down from drivers hidden behind walls to LED tubes mounted on both side of mirrors on walls. GC to confirm cost to install dimmers for all LED tube lights to enable light adjustment on site. Refer to SD-699-0.



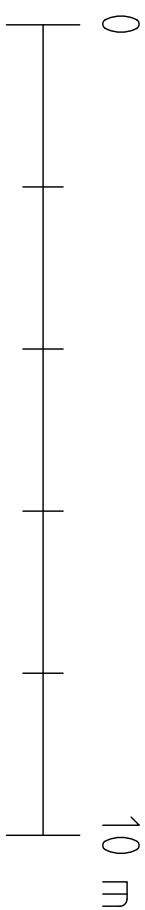
External BOH

FURNITURE KEY:



Main sales area

ALL MEASUREMENTS TO BE
CHECKED ON SITE



A	Tender drawings	JM	2022-03-25
REV	DESCRIPTION	SIGN	DATE

CLASS	SE0639	Monki
Drothingatan, new		
Store 2022		
MONKI		
H & M Hemnes & Mauritz OBC AB SE-105 47 Stockholm		
Interior Department		
STORE CODE	SE0639	ENTRY ID
CLASS	P57100L	PROJECT MANAGER
Monki	Bachir Gouaer	SIGNE PLANNER
DATE	2022-03-25	Julia Matas

This drawing is the property of HM Group. Copyright is reserved by them and the drawing is issued on the condition that it is not copied, reproduced, retained or disclosed to any unauthorised person, either in whole or in part, without the consent in writing of HM Group.